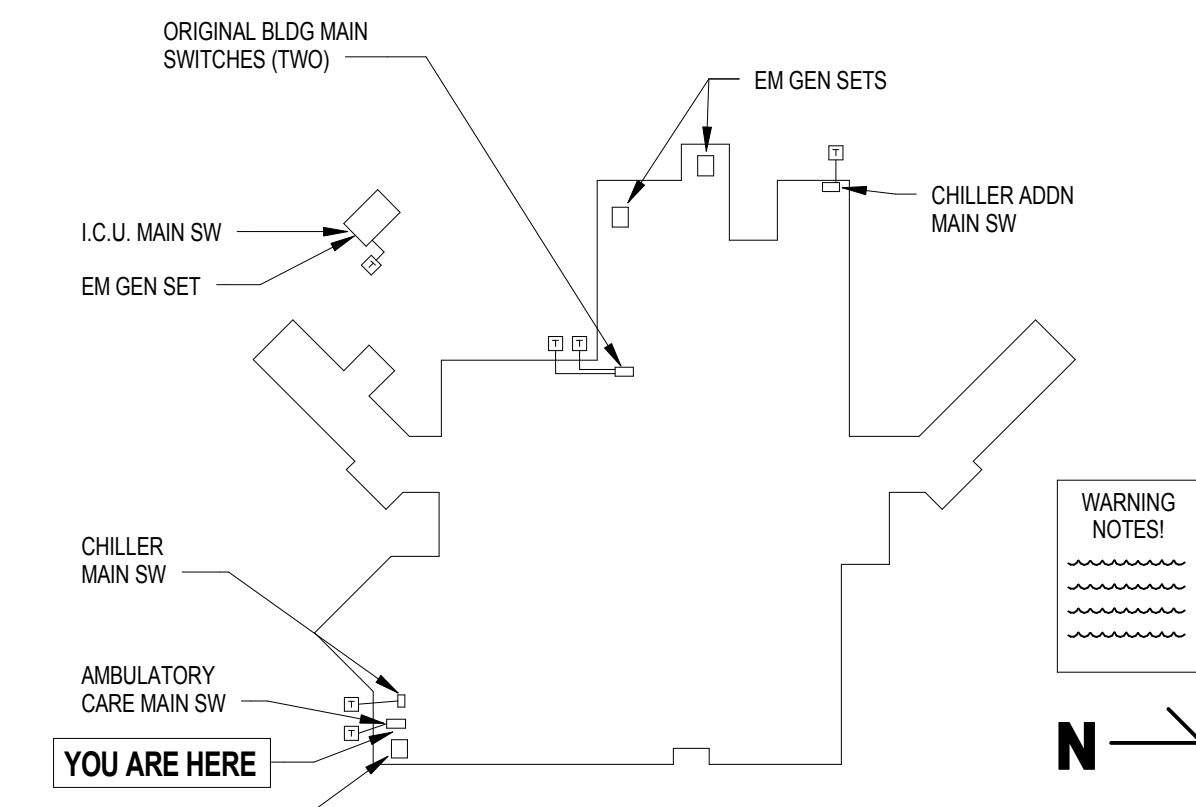
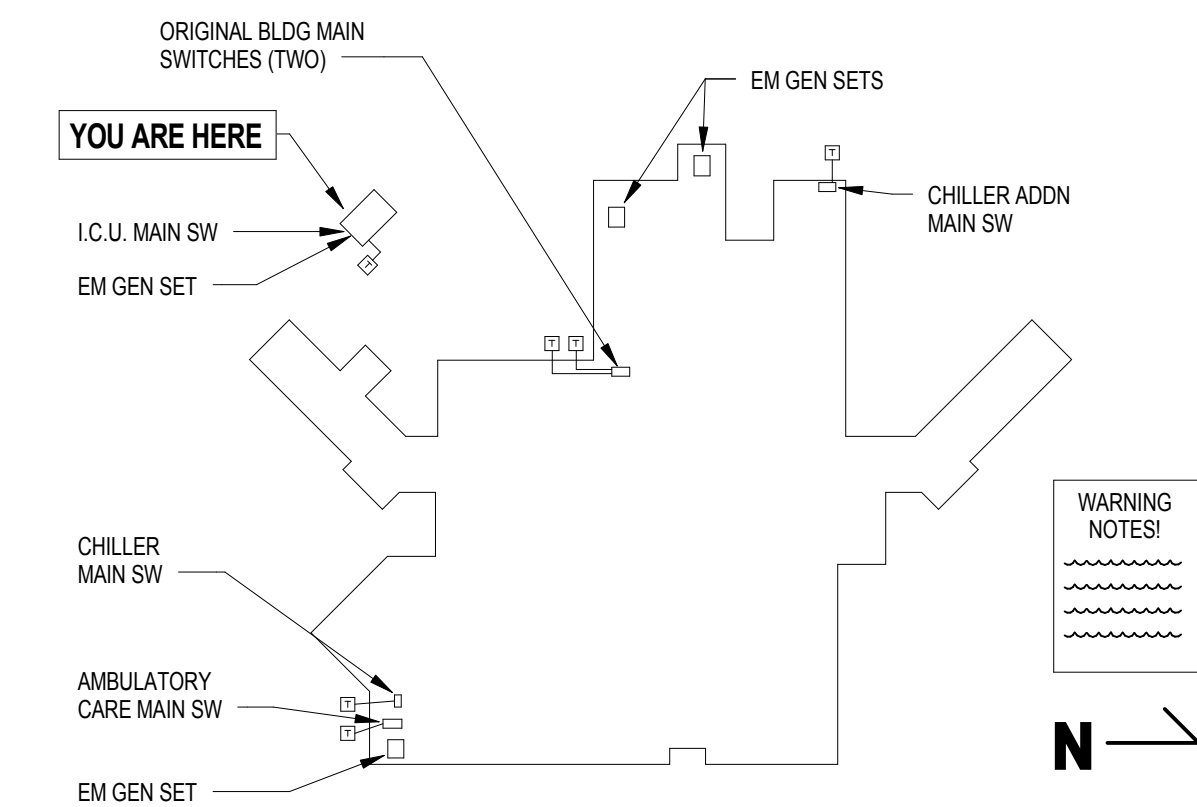


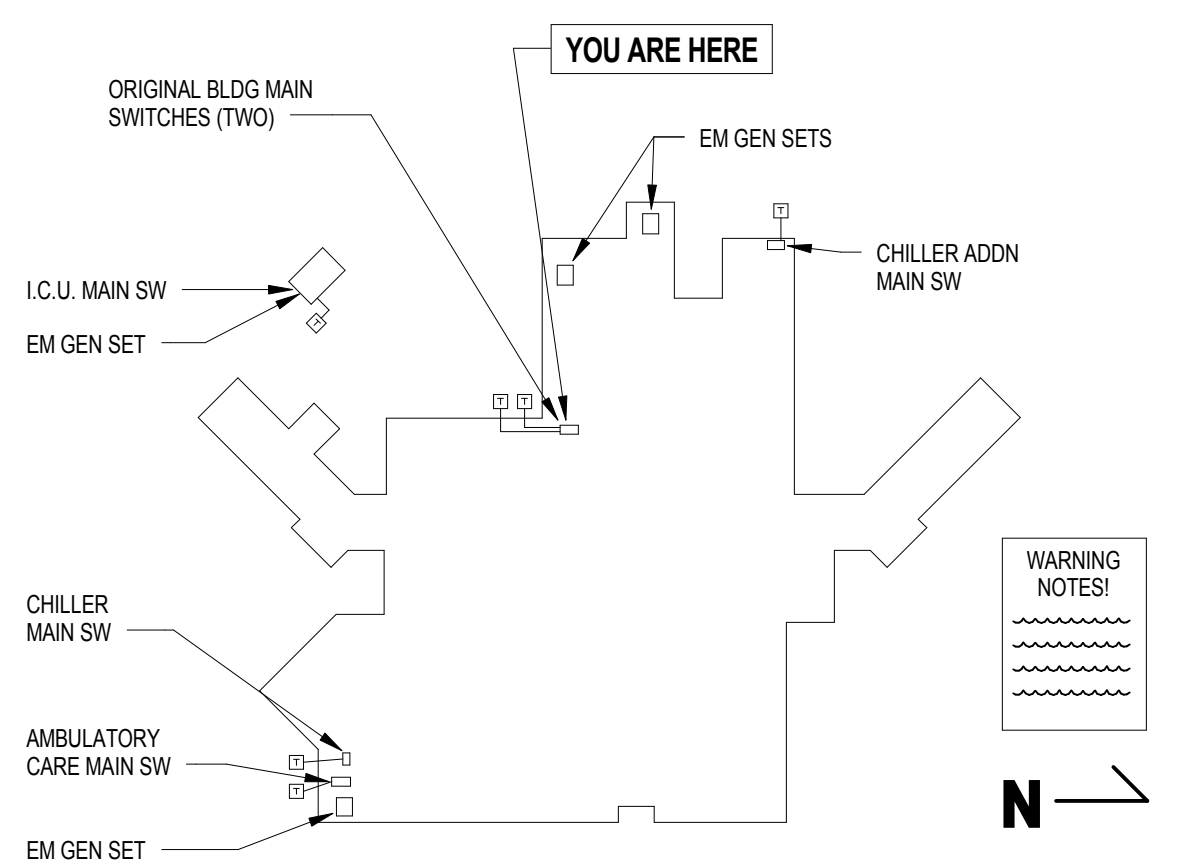
BUILDING MAIN ELECTRICAL SERVICES PLAN



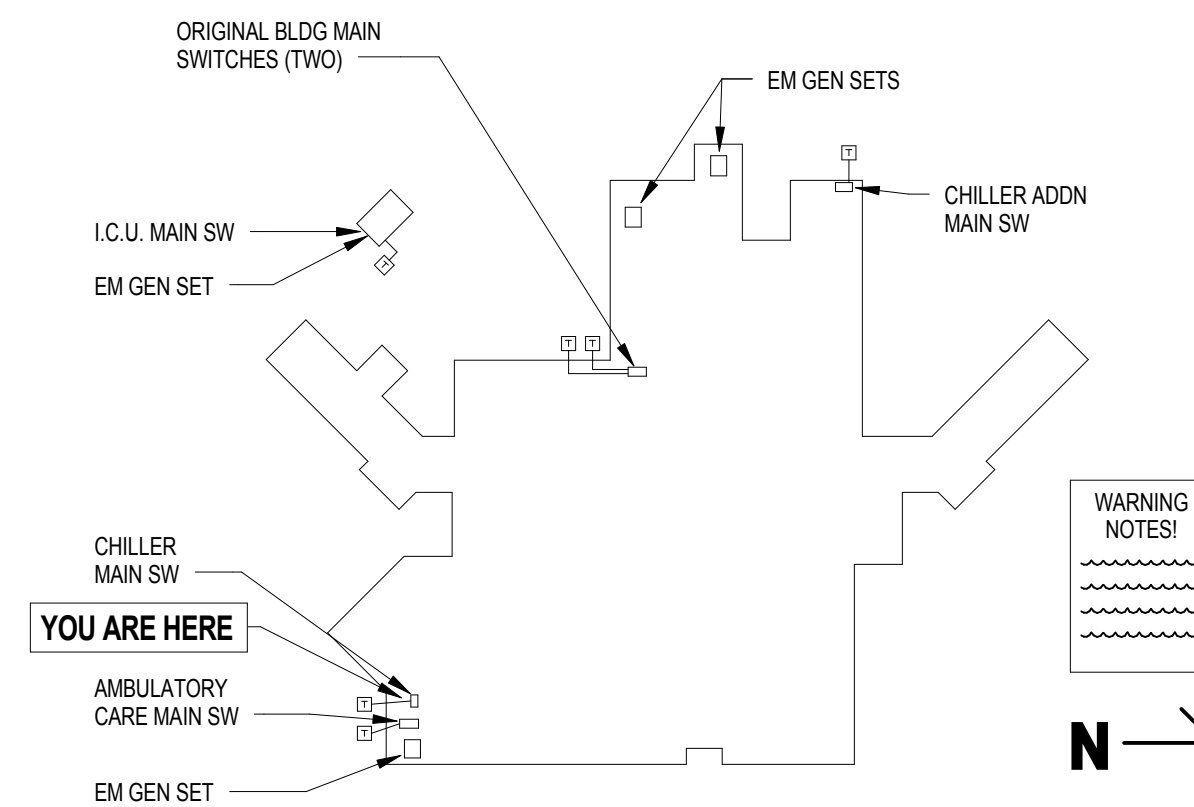
BUILDING MAIN ELECTRICAL SERVICES PLAN



BUILDING MAIN ELECTRICAL SERVICES PLAN



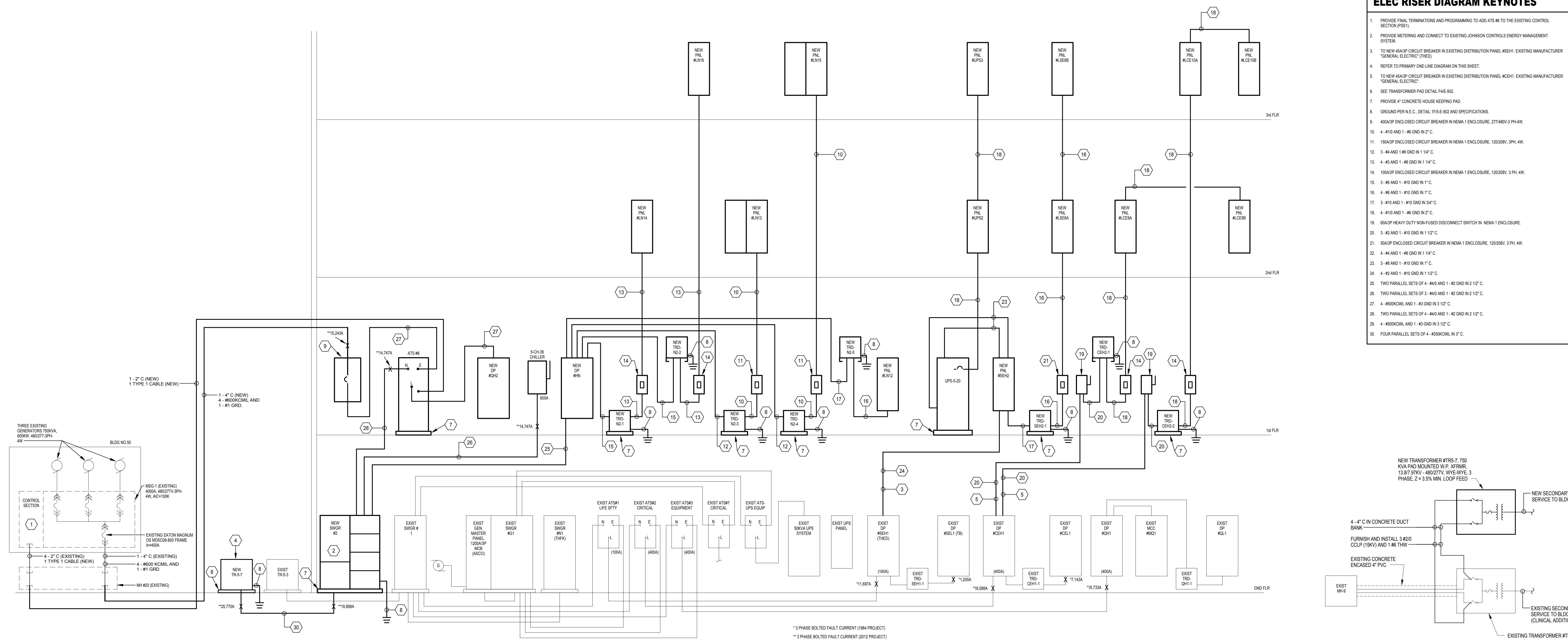
BUILDING MAIN ELECTRICAL SERVICES PLAN



BUILDING MAIN ELECTRICAL SERVICES PLAN

NOTE: CONTRACTOR SHALL PROVIDE A PERMANENTLY INSTALLED PLAQUE AT EACH MAIN SWITCH LOCATION IDENTIFYING THE LOCATIONS OF ALL OTHER MAIN SWITCHES WITHIN BUILDING #5 SIMILAR IN DETAIL TO THESE PLANS IN ACCORDANCE WITH N.E.C. ARTICLE 230.2. PLAQUE SHALL BE NO SMALLER THAN 8"x10" OVERALL. REVIEW WITH RESIDENT ENGINEER PRIOR TO FABRICATION.

1B MULTIPLE ELECTRICAL SERVICE DETAIL
1/4" = 1'-0"



- ELEC RISER DIAGRAM KEYNOTES**
1. PROVIDE FINAL TERMINATIONS AND PROGRAMMING TO ADD ATS #6 TO THE EXISTING CONTROL SECTION (PDS1).
 2. PROVIDE METERING AND CONNECT TO EXISTING JOHNSON CONTROLS ENERGY MANAGEMENT SYSTEM.
 3. TO NEW 450A/3P CIRCUIT BREAKER IN EXISTING DISTRIBUTION PANEL #5EH1. EXISTING MANUFACTURER "GENERAL ELECTRIC" (THED).
 4. REFER TO PRIMARY ONE-LINE DIAGRAM ON THIS SHEET.
 5. TO NEW 450A/3P CIRCUIT BREAKER IN EXISTING DISTRIBUTION PANEL #5EH1. EXISTING MANUFACTURER "GENERAL ELECTRIC".
 6. SEE TRANSFORMER PAD DETAIL FAE-502.
 7. PROVIDE 4" CONCRETE HOUSE KEEPING PAD.
 8. GROUND PER N.E.C. DETAIL 1F5-E-502 AND SPECIFICATIONS.
 9. 400A/3P ENCLOSED CIRCUIT BREAKER IN NEMA 1 ENCLOSURE. 277/480V-3 PH-4W.
 10. 4 - #10 AND 1 - #6 GND IN 2" C.
 11. 150A/3P ENCLOSED CIRCUIT BREAKER IN NEMA 1 ENCLOSURE. 120/208V, 3 PH, 4W.
 12. 3 - #4 AND 1 - #6 GND IN 1 1/4" C.
 13. 4 - #3 AND 1 - #6 GND IN 1 1/4" C.
 14. 100A/3P ENCLOSED CIRCUIT BREAKER IN NEMA 1 ENCLOSURE. 120/208V, 3 PH, 4W.
 15. 3 - #6 AND 1 - #10 GND IN 1" C.
 16. 4 - #6 AND 1 - #10 GND IN 1" C.
 17. 3 - #10 AND 1 - #10 GND IN 3/4" C.
 18. 4 - #10 AND 1 - #6 GND IN 2" C.
 19. 60A/3P HEAVY DUTY NON-FUSED DISCONNECT SWITCH IN NEMA 1 ENCLOSURE.
 20. 3 - #2 AND 1 - #10 GND IN 1 1/2" C.
 21. 50A/3P ENCLOSED CIRCUIT BREAKER IN NEMA 1 ENCLOSURE. 120/208V, 3 PH, 4W.
 22. 4 - #4 AND 1 - #6 GND IN 1 1/4" C.
 23. 3 - #6 AND 1 - #10 GND IN 1" C.
 24. 4 - #2 AND 1 - #10 GND IN 1 1/2" C.
 25. TWO PARALLEL SETS OF 4 - #40 AND 1 - #2 GND IN 2 1/2" C.
 26. TWO PARALLEL SETS OF 3 - #40 AND 1 - #2 GND IN 2 1/2" C.
 27. 4 - #50KCMIL AND 1 - #3 GND IN 3 1/2" C.
 28. TWO PARALLEL SETS OF 4 - #40 AND 1 - #2 GND IN 2 1/2" C.
 29. 4 - #50KCMIL AND 1 - #3 GND IN 3 1/2" C.
 30. FOUR PARALLEL SETS OF 4 - #50KCMIL IN 3" C.

1F SECONDARY PARTIAL POWER DISTRIBUTION DIAGRAM
No Scale

8F PRIMARY ONE-LINE DIAGRAM
No Scale

CONSULTANTS:			ARCHITECTS/ ENGINEERS:		Drawing Title SECONDARY PARTIAL POWER DISTRIBUTION DIAGRAM	Project Title Sioux Falls VA Health Care System Acute Inpatient Medical Unit Addition and Renovation	Project Number 04100857	Office of Construction and Facilities Management Department of Veterans Affairs
			TSP, Inc. 1112 N. West Ave. Sioux Falls, SD 57104 phone: (605) 336-1160 fax: (605) 336-7926 www.teamtsp.com		Approved: Project Director	Location VA Medical Center 2801 W. 22nd Street, PO Box 5046 Sioux Falls, SD 57117-5046	Building Number 5	
MARK					Date 08/06/2012	Checked MJJ	Drawn KAK	