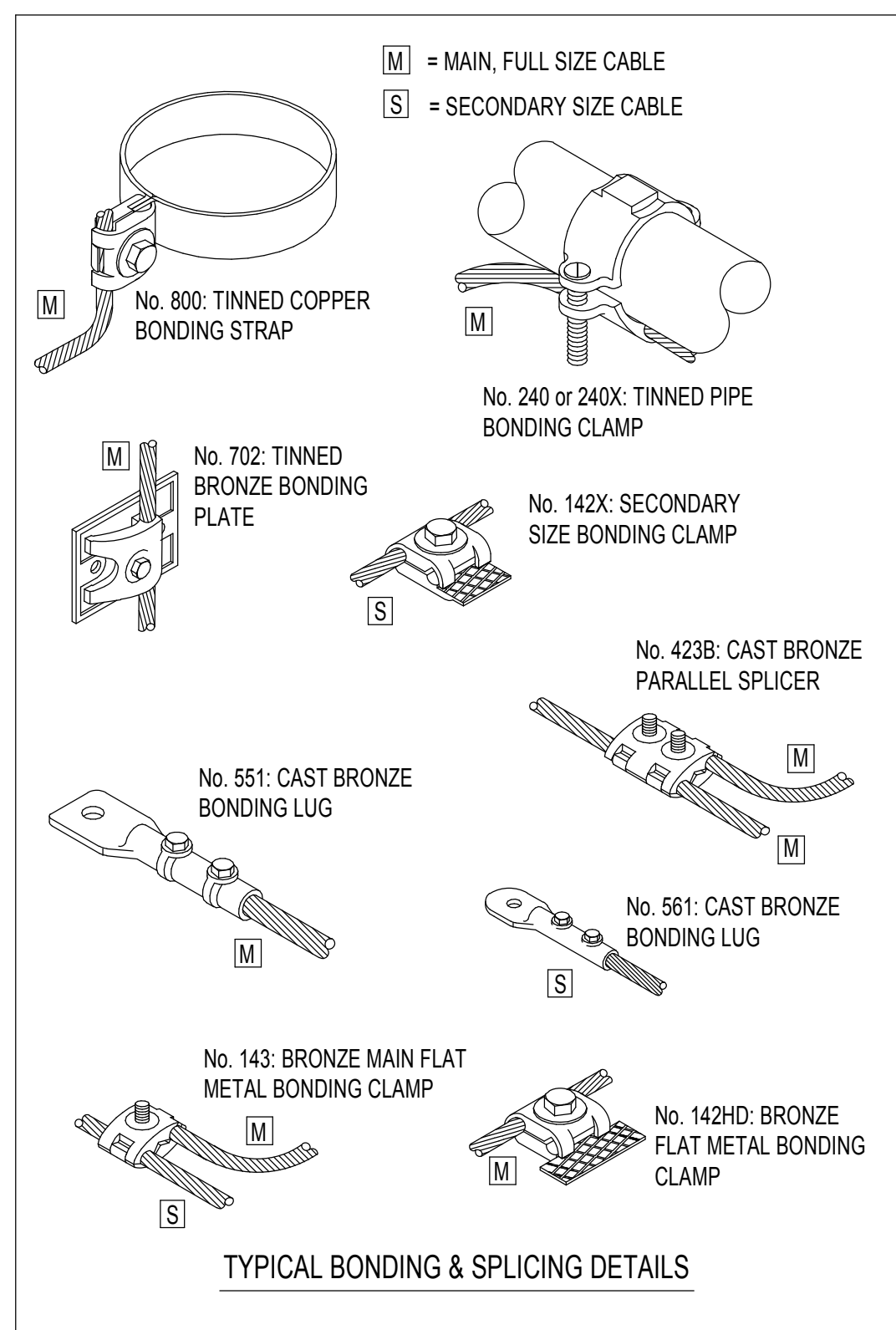
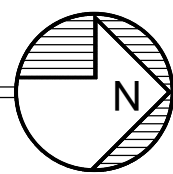


# LIGHTNING PROTECTION PLAN

SCALE: 1/16" = 1'-0"

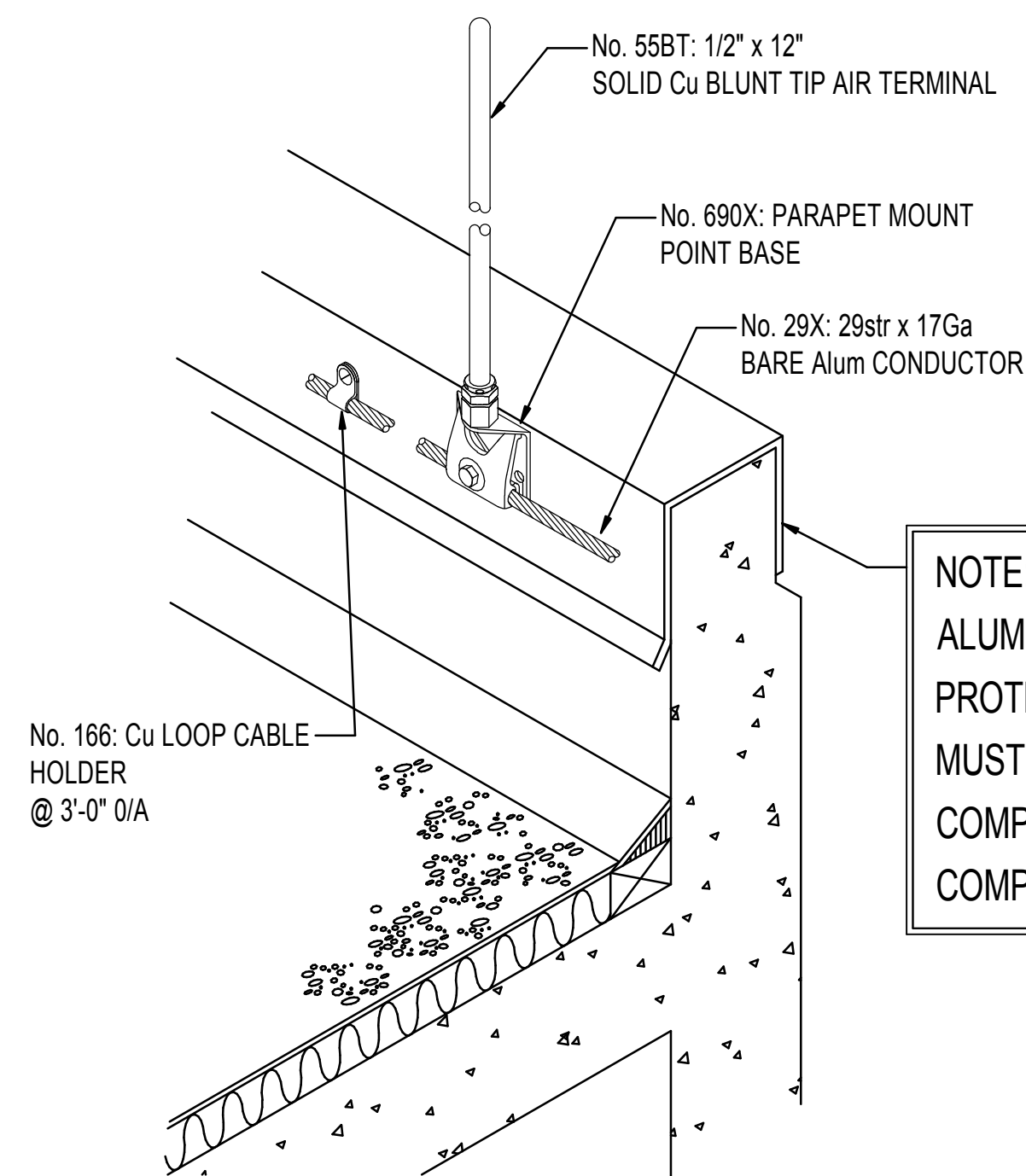
0 16 32



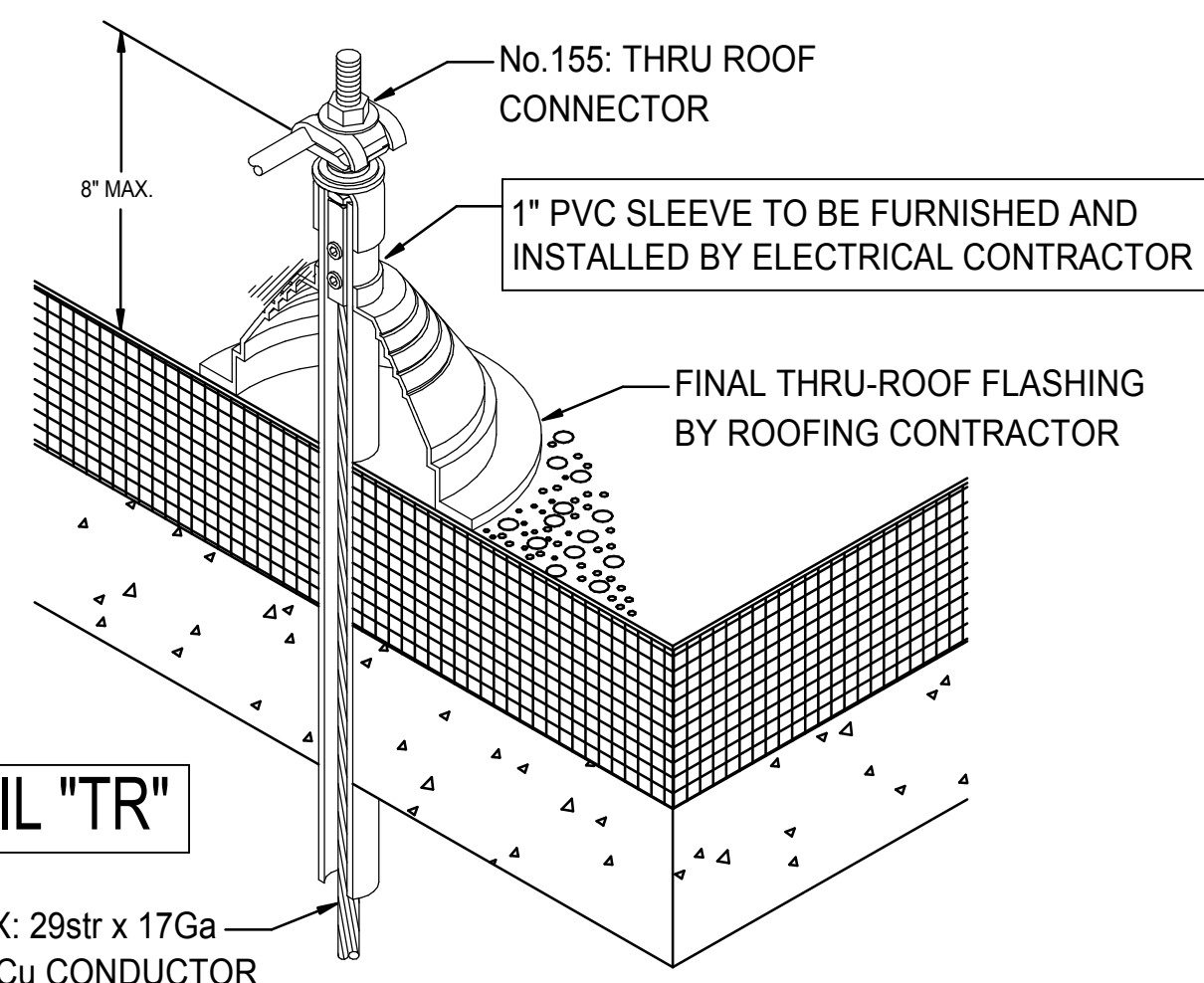
- GENERAL AND INSTALLATION NOTES**
- LOCATE AIR TERMINALS AS SHOWN. TAKE CARE TO INSURE THAT ALL POINTS ARE WITHIN 2'-0" OF OUTSIDE BUILDING EDGE, OUTSIDE CORNERS, AND RIDGE AND THAT MAXIMUM SPACING DOES NOT EXCEED 30'-0". AND THAT PROTECTION ABOVE OBJECT PROTECTED IS 10". (POINTS PROJECTING 24" MAY BE SEACED @ 25' MAX.)
  - MAINTAIN HORIZONTAL OR DOWNWARD COURSING OF MAIN CONDUCTOR. INSURE THAT ALL BENDS HAVE AT LEAST AN 8" RADIUS AND DO NOT EXCEED 90°.
  - ATTACH ALL EXPOSED ROOF, DOWN LEAD AND BONDING CABLES AT 3'-0" CENTER MAXIMUM. VERIFY COMPATIBILITY OF ADHESIVE ON MEMBRANE. INDICATE LOCATIONS PRIOR TO INSTALLATION.
  - GROUND ELECTRODES SHALL BE INSTALLED AS SHOWN BUT IN NO INSTANCE SHALL BE LESS THAN 1'-0" BELOW GRADE AND 2'-0" FROM FOUNDATION WALL. BODIES SHALL PENETRATE EARTH AT LEAST 10'-0".
  - BOND TO WATER SERVICE AND OTHER PIPING SYSTEMS AS SHOWN AND AS REQUIRED BY CODES.
  - INTERCONNECT LIGHTNING PROTECTION GROUND TO ELECTRIC, TELEPHONE, AND OTHER BUILDING GROUND SYSTEMS AS SHOWN OR AS REQUIRED BY CODE.
  - SYSTEM SHALL BE INSTALLED AS SHOWN TO INSURE PROPER CODE COMPLIANCE. CERTIFICATION, ANY MAJOR VARIANCE SHALL EXIST. APPROVAL.
  - "AS-BUILT" DRAWINGS SHALL BE SUBMITTED IN ACCORDANCE WITH CERTIFICATION PROCEDURES.
  - GROUNDING SYSTEMS ARE UNDERWRITERS LABORATORIES APPROVED WITH LABELS ON TERMINALS.
  - ALL MATERIALS SHOWN AND INTENDED FOR USE, ARE TO BE AS MANUFACTURED BY THOMPSON LIGHTNING PROTECTION INC., 901 SIBLEY HWY., ST. PAUL, MN 55118. PHONE: 1-800-777-1230 FAX: 651-455-2545

## TYPICAL SYMBOL LEGEND

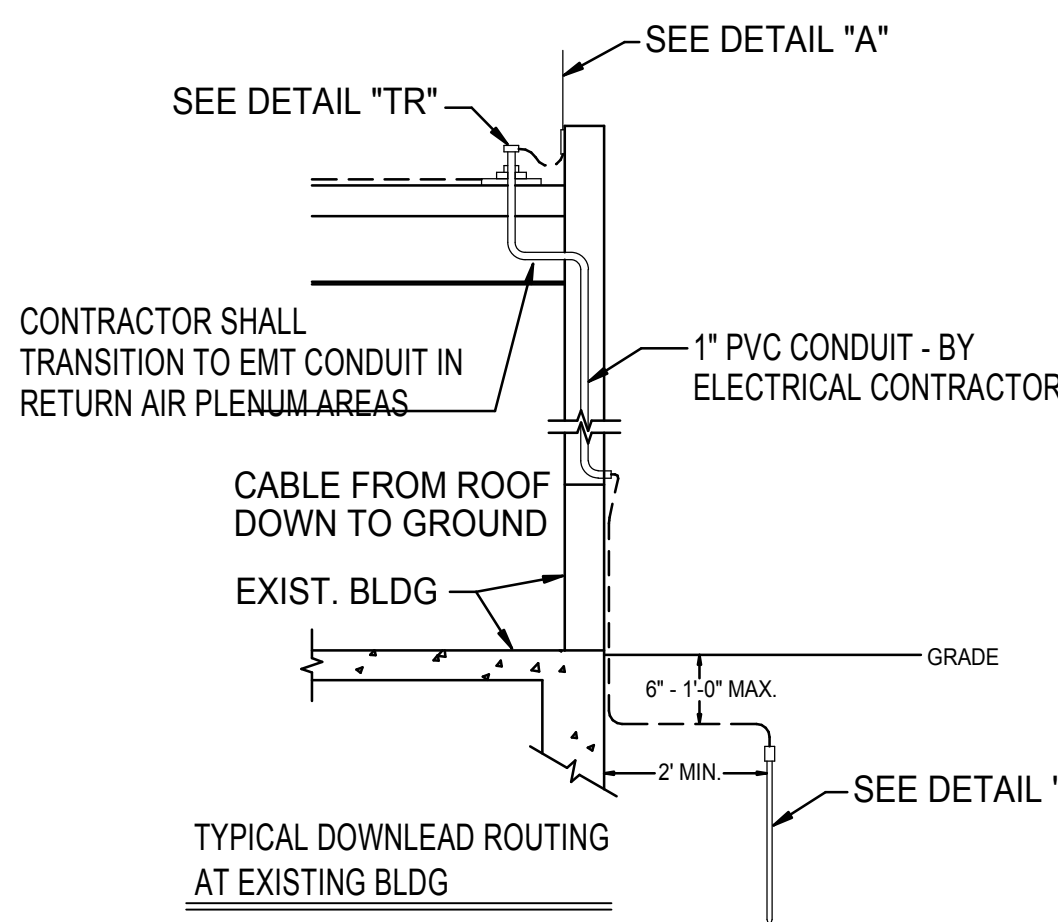
- AIR TERMINAL: LETTER DENOTES DETAIL TYPE
- MAIN CONDUCTOR
- COUNTERPOISE/GROUND CABLE AS/IF APPLICABLE
- THRU ROOF PENETRATION: LETTER DENOTES DETAIL TYPE
- THRU ROOF PENETRATION TO STEEL: LETTER DENOTES DETAIL TYPE
- BONDING CONNECTION: SEE SPECIFIC DETAIL
- CONNECTION TO EXISTING GROUND GRID BY OTHERS
- FULL DOWNLEAD TO GROUND
- STEEL COLUMN BOND TO GROUND
- EXPOSED/PITCHED DOWNLEAD TO GROUND
- ZONE OF PROTECTION



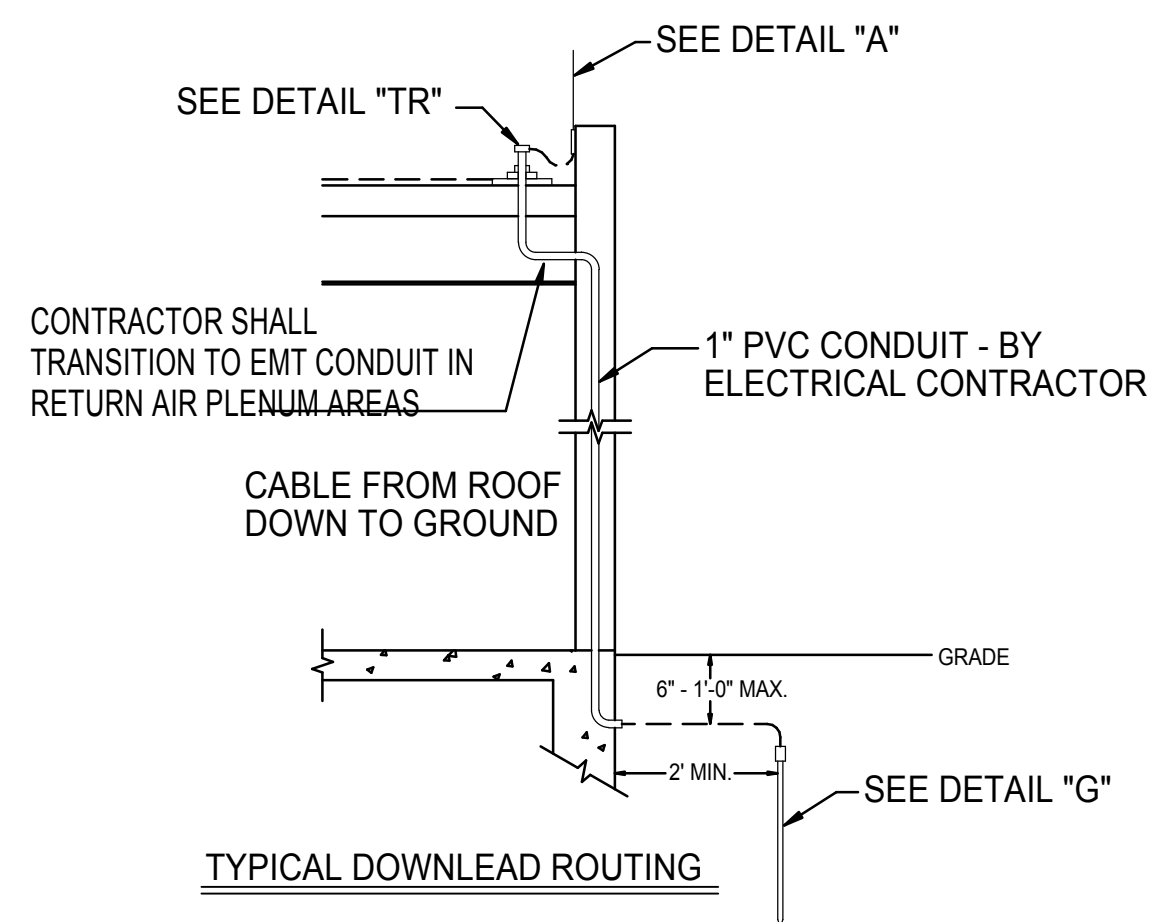
DETAIL "A"



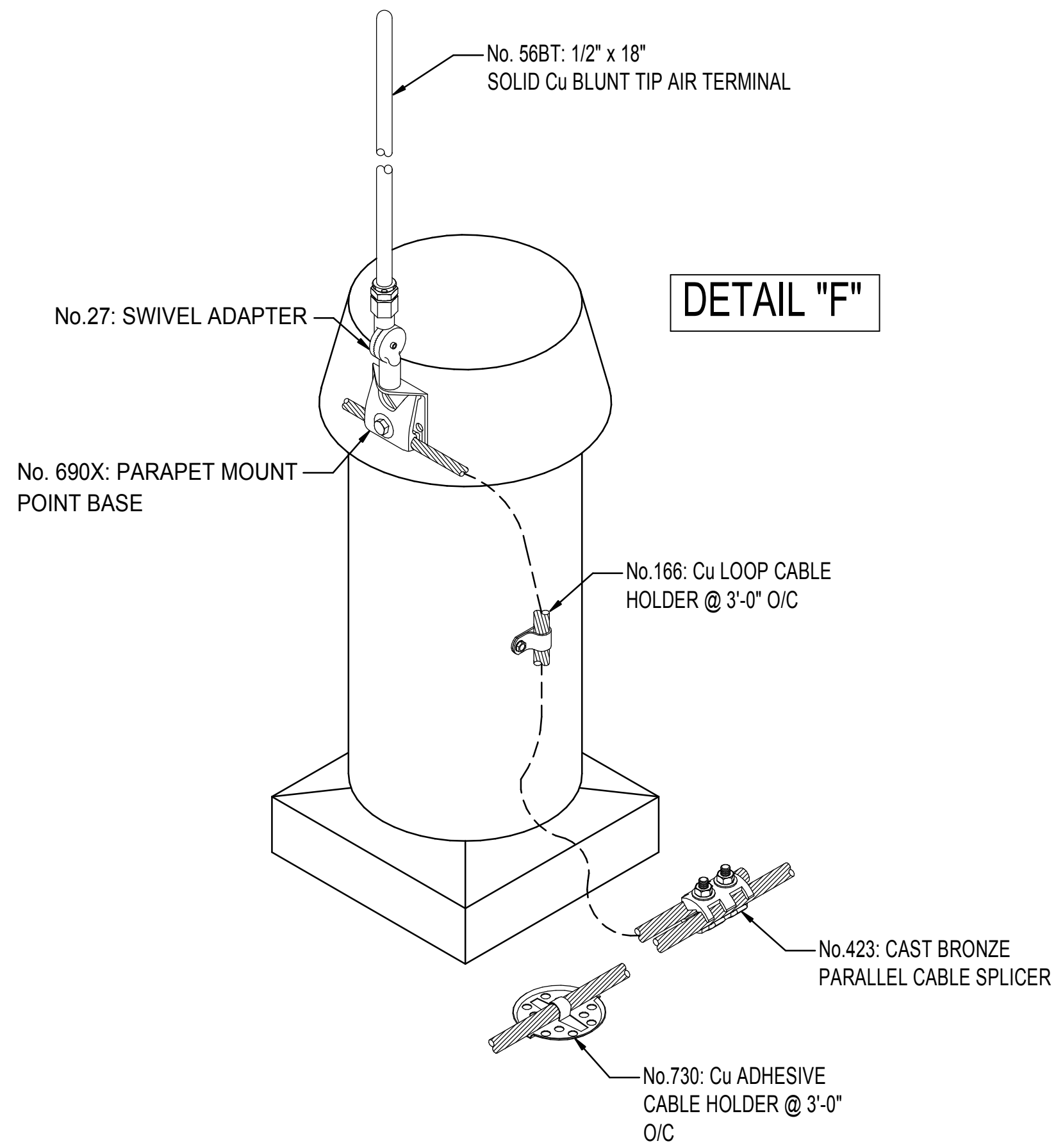
DETAIL "TR"



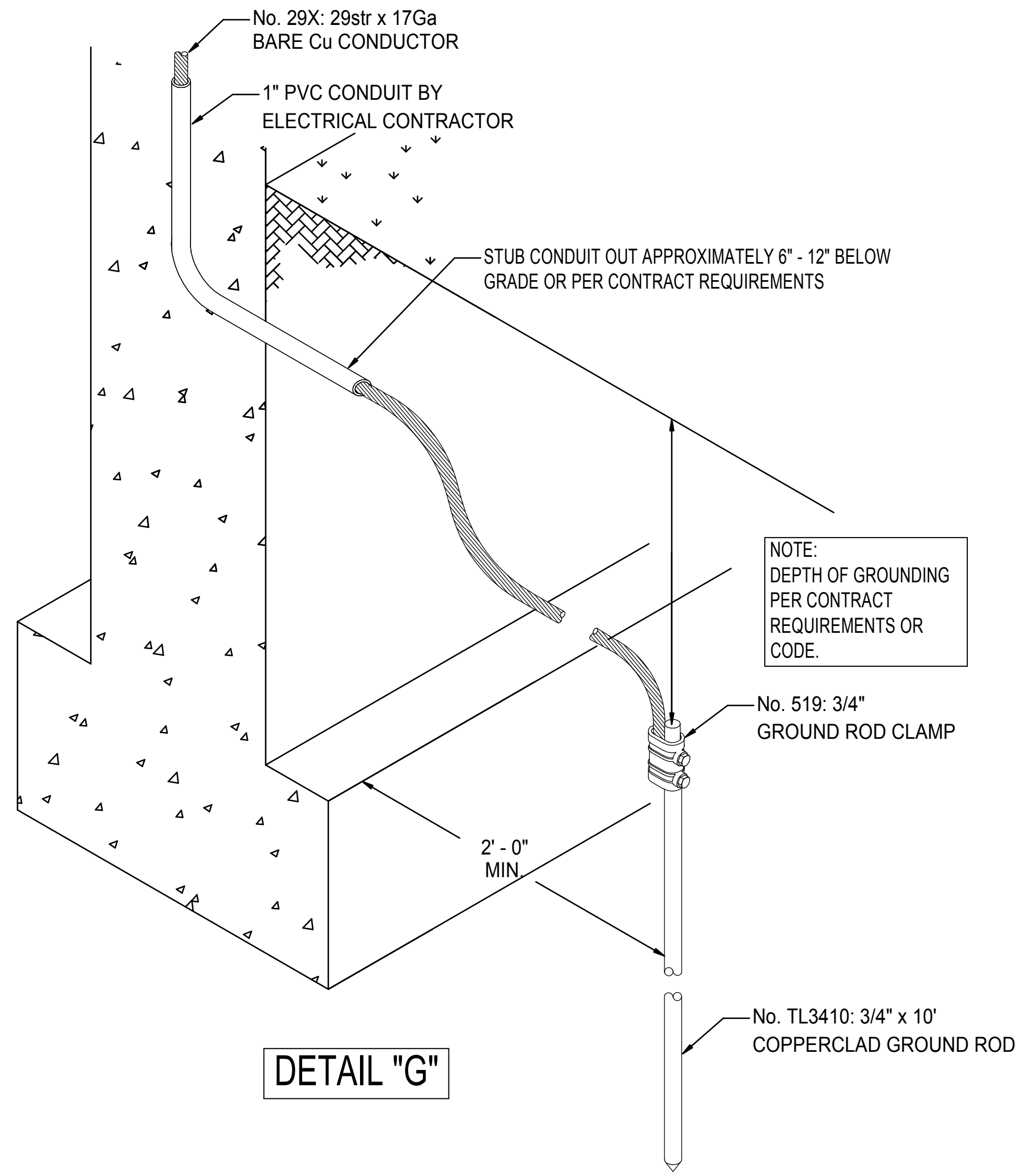
DETAIL "T1"



DETAIL "T"



DETAIL "F"



DETAIL "G"

FULLY SPRINKLERED  
100% CONSTRUCTION DOCUMENTS

<b>CONSULTANTS:</b>		<b>ARCHITECTS/ ENGINEERS:</b>		<b>Drawing Title</b> LIGHTNING PROTECTION PLAN		<b>Project Title</b> Sioux Falls VA Health Care System Acute Inpatient Medical Unit Addition and Renovation		<b>Project Number</b> 04100857		<b>Office of</b> Construction and Facilities Management	
				Approved: Project Director		Location VA Medical Center 2801 W. 22nd Street, PO Box 5046 Sioux Falls, SD 57117-5046		<b>Building Number</b> 5		<b>Department of</b> Veterans Affairs	
						Date 08/06/2012		Checked MJJ		Drawn KAK	
								<b>5-E-701</b>			
								Dwg. 123 of 123			