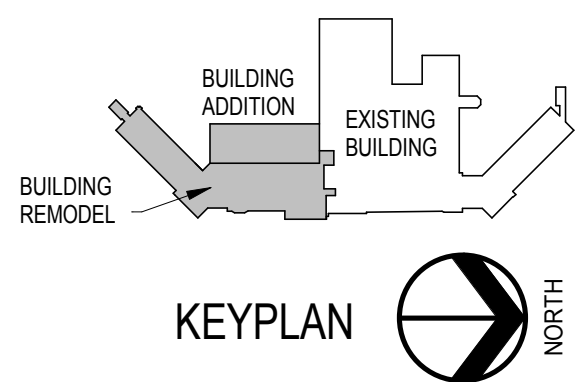


**ELEC DEMO PLAN KEYNOTES**

1. DISCONNECT AND REMOVE EXISTING EXTERIOR WALL LIGHT. PROVIDE BLANK COVER PLATE OVER EXISTING OPENING.
2. DISCONNECT AND RELOCATE EXISTING 2x4 FLUORESCENT LIGHT FIXTURE. COORDINATE WITH G.C. SEE SHEET 5-ED101 FOR NEW LOCATION.
3. EXISTING MOTOR CONTROL CENTER TO REMAIN AS IS.
4. MAINTAIN AND PROTECT EXISTING LIGHTNING PROTECTION SYSTEM CABLING DURING DEMOLITION AND BUILD BACK. SEE SHEET 5-ED101.
5. PROVIDE TEMPORARY SUPPORT OF ANY CEILING MOUNTED CONDUITS AND DEVICES IN THIS AREA TO ACCOMMODATE CEILING REMOVAL. PROVIDE PERMANENT SUPPORT ONCE NEW CEILING IS COMPLETED. COORDINATE WITH G.C.



**1F 1ST FLOOR ELECTRICAL DEMOLITION PLAN**  
1/8" = 1'-0"

**FULLY SPRINKLERED  
100% CONSTRUCTION DOCUMENTS**

<div>MARK</div> <div>REVISION DESCRIPTION</div> <div>DATE</div>	<b>CONSULTANTS:</b>		<b>ARCHITECTS/ ENGINEERS:</b>  TSP, Inc. 1112 N. West Ave. Sioux Falls, SD 57104 phone: (605) 336-1160 fax: (605) 336-7926 www.teamtsp.com   To Solve. To Excel. Together.	Drawing Title <b>1ST FLOOR ELECTRICAL DEMOLITION PLAN</b>		Project Title <b>Sioux Falls VA Health Care System Acute Inpatient Medical Unit Addition and Renovation</b>		Project Number 04100857		<b>Office of Construction and Facilities Management</b>  <b>Department of Veterans Affairs</b>
				Approved: Project Director		Location VA Medical Center 2801 W. 22nd Street, PO Box 5046 Sioux Falls, SD 57117-5046		Building Number <b>5</b>		
				Date 08/06/2012	Checked MJJ	Drawn KAK	<b>5-ED101</b> Dwg. 103 of 123			