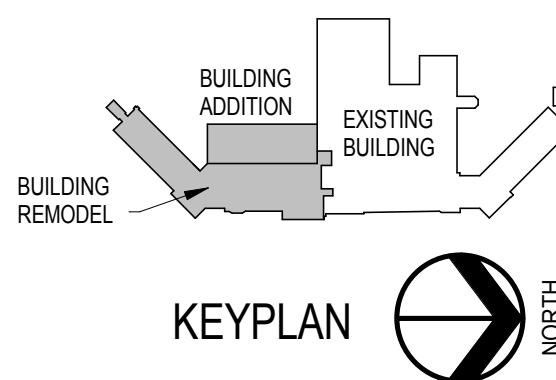


ELEC DEMO GENERAL NOTES

- A. ELECTRICAL ITEMS SHOWN DASHED AND IN FULL TONE LINES ON THIS PLAN INDICATE EXISTING EQUIPMENT TO BE REMOVED AND/OR RELOCATED BY DIVISION 28 (ALONG WITH ALL ASSOCIATED UNUSED CONDUIT AND WIRE), UNLESS NOTED OTHERWISE. ELECTRICAL ITEMS IN HALF TONE ARE EXISTING ITEMS TO REMAIN.
- B. ANY DEMOLITION REQUIRED ON THIS PLAN IS BASED ON INFORMATION SHOWN ON OWNER'S EXISTING PLANS AND AN ON-SITE REVIEW OF THE FACILITY. QUANTITIES, TYPES, AND LOCATIONS OF ITEMS SHOWN ARE BELIEVED TO BE ACCURATE. HOWEVER, DIVISION 28 CONTRACTOR SHALL BE RESPONSIBLE FOR REMOVING AND/OR RELOCATING ELECTRICAL EQUIPMENT AS REQUIRED TO ACCOMMODATE REMODELING.
- C. ANY EXISTING SWITCHES OR RECEPTACLES THAT ARE RELOCATED SHALL BE REPLACED BY NEW.
- D. WHEN EXISTING WALLS, CEILINGS, FLOORS, ELECTRICAL PANELS, LIGHT FIXTURES, SPEAKERS, OR OTHER OUTLETS ARE REMOVED AND OR RELOCATED, DIVISION 28 CONTRACTOR SHALL EXTEND EXISTING CIRCUITING (CONDUIT AND WIRE) IF REQUIRED; INSTALL JUNCTION BOXES IN WALLS, CEILINGS OR FLOORS; IF REQUIRED TO CONTINUE CIRCUITING, REMOVE ALL UNUSED WIRE, REMOVE ALL UNUSED CONDUIT WHERE ACCESSIBLE, AND INSTALL NEW BLANK PLATES AS REQUIRED ON EXISTING OUTLET BOXES.
- E. EXISTING EQUIPMENT REMOVED AND NOT REUSED, AT OWNER'S OPTION, BE RETURNED TO OWNER. IF THE OWNER DOES NOT WISH TO KEEP THE ITEMS, THEY SHALL BECOME THE CONTRACTOR'S PROPERTY AND BE REMOVED FROM THE SITE, UNLESS OTHERWISE SPECIFIED OR SHOWN.
- F. CONTRACTOR SHALL DISCONNECT AND REUSE ANY EXISTING WIRELESS ACCESS POINTS THAT ARE LOCATED IN THE REMODELED SPACES. COORDINATE WITH VA WIRELESS CONTRACTOR FOR EXACT LOCATIONS OF NEW ACCESS POINTS.

ELEC DEMO PLAN KEYNOTES

1. EXISTING BIOMED DATA RACK TO BE RELOCATED TO TELECOM #330C.
2. DISCONNECT EXISTING TELEMETRY CEILING MOUNTED AP AND ASSOCIATED CABLING BACK TO ROOM #330. SEE SHEET 5-ED103 FOR NEW LOCATIONS.
3. EXISTING TELEMETRY CEILING MOUNTED AP AND ASSOCIATED CABLING TO REMAIN IN PLACE AND MAINTAIN OPERATION.
4. DISCONNECT AND REMOVE EXISTING SINGLE RECEPTACLES AND PROVIDE BLANK COVER PLATES OVER JUNCTION BOX.
5. DISCONNECT AND REMOVE EXISTING DUPLEX RECEPTACLE, PROVIDE NEW RECEPTACLE AS INDICATED ON SHEET 5-ED103.
6. PROVIDE TEMPORARY SUPPORT FOR CEILING MOUNTED LIGHT FIXTURES AND ELECTRICAL DEVICES AND REINSTALL INTO NEW CEILING AT SAME LOCATIONS. COORDINATE WITH G.C.
7. DISCONNECT AND REMOVE EXISTING PUSH PLATE DEVICE. PROVIDE BLANK STAINLESS STEEL COVER PLATE OVER JUNCTION BOX.
8. DISCONNECT AND REMOVE EXISTING SURFACE MOUNTED DUPLEX RECEPTACLE AND SURFACE RACEWAY BACK TO ABOVE LAY IN CEILING. EXTEND CIRCUITING TO NEW DUPLEX RECEPTACLES SHOWN ON SHEET 5-ED103.
9. DISCONNECT AND REMOVE EXISTING ELECTRICAL GEAR AND CONDUCTORS ASSOCIATED WITH THE REMOVAL OF MECHANICAL EQUIPMENT IN THE ATTIC ABOVE. SEE SHEET 5-ED103 FOR EQUIPMENT REMOVAL.



1F 3RD FLOOR ELECTRICAL DEMOLITION PLAN

1/8" = 1'-0"

CONSULTANTS:

ARCHITECTS/ ENGINEERS:

TSP, Inc.  
1112 N. West Ave.  
Sioux Falls, SD 57104  
phone: (605) 336-1160  
fax: (605) 336-7926  
www.teamtsp.com



Drawing Title  
3RD FLOOR ELECTRICAL DEMOLITION PLAN

Approved: Project Director

Project Title  
Sioux Falls VA Health Care System  
Acute Inpatient Medical Unit Addition  
and Renovation

Location  
VA Medical Center  
2891 W. 22nd Street, PO Box 5046  
Sioux Falls, SD 57117-5046

Date  
08/06/2012

Checked  
MJJ

Drawn  
KAK

Project Number  
04100857

Building Number  
5

Drawing Number

5-ED103

Dwg. 105 of 123

Office of  
Construction  
and Facilities  
Management

