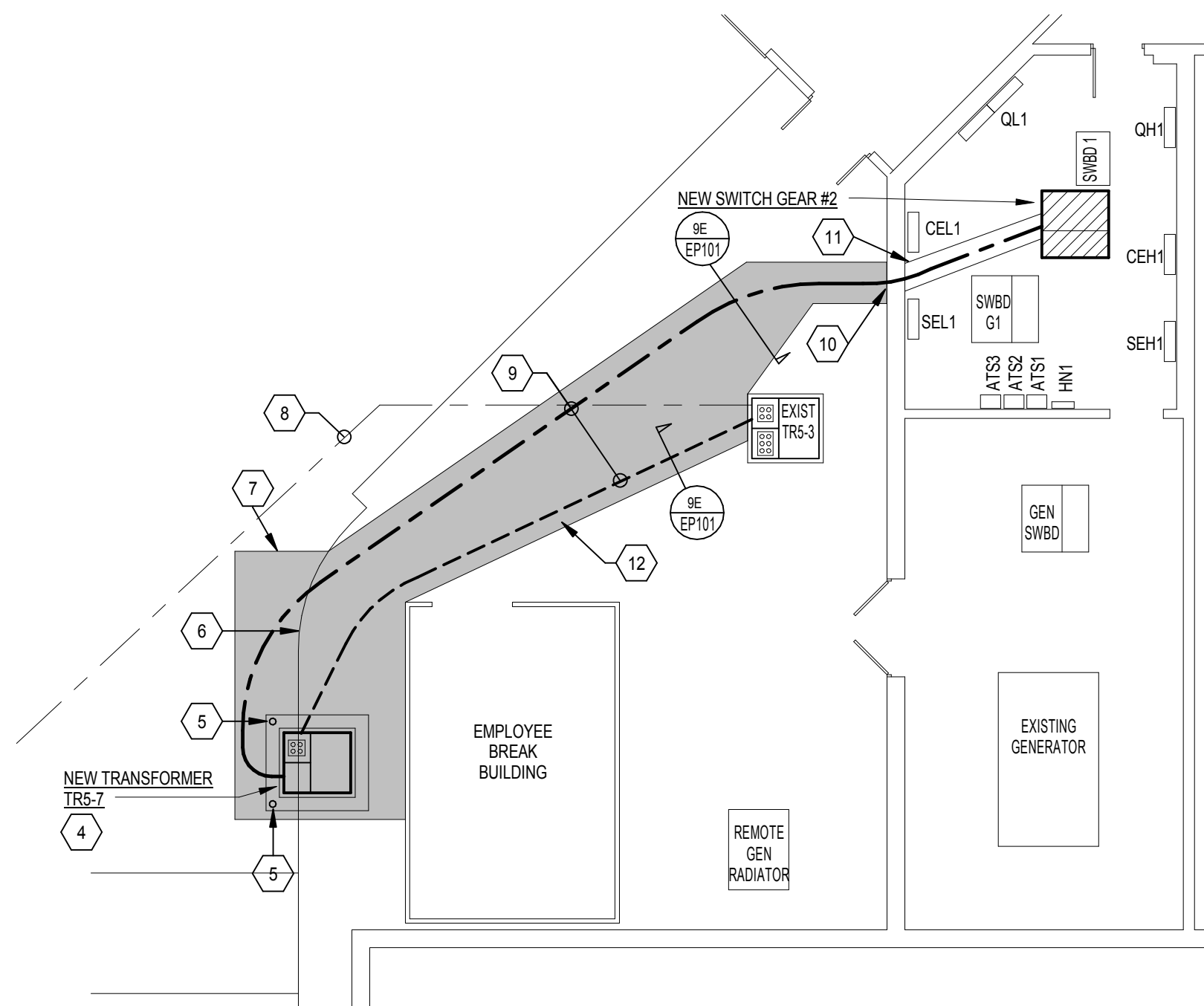


**1B ELECTRICAL SITE PLAN**  
1" = 60'-0"

**ELEC SITE PLAN KEYNOTES**

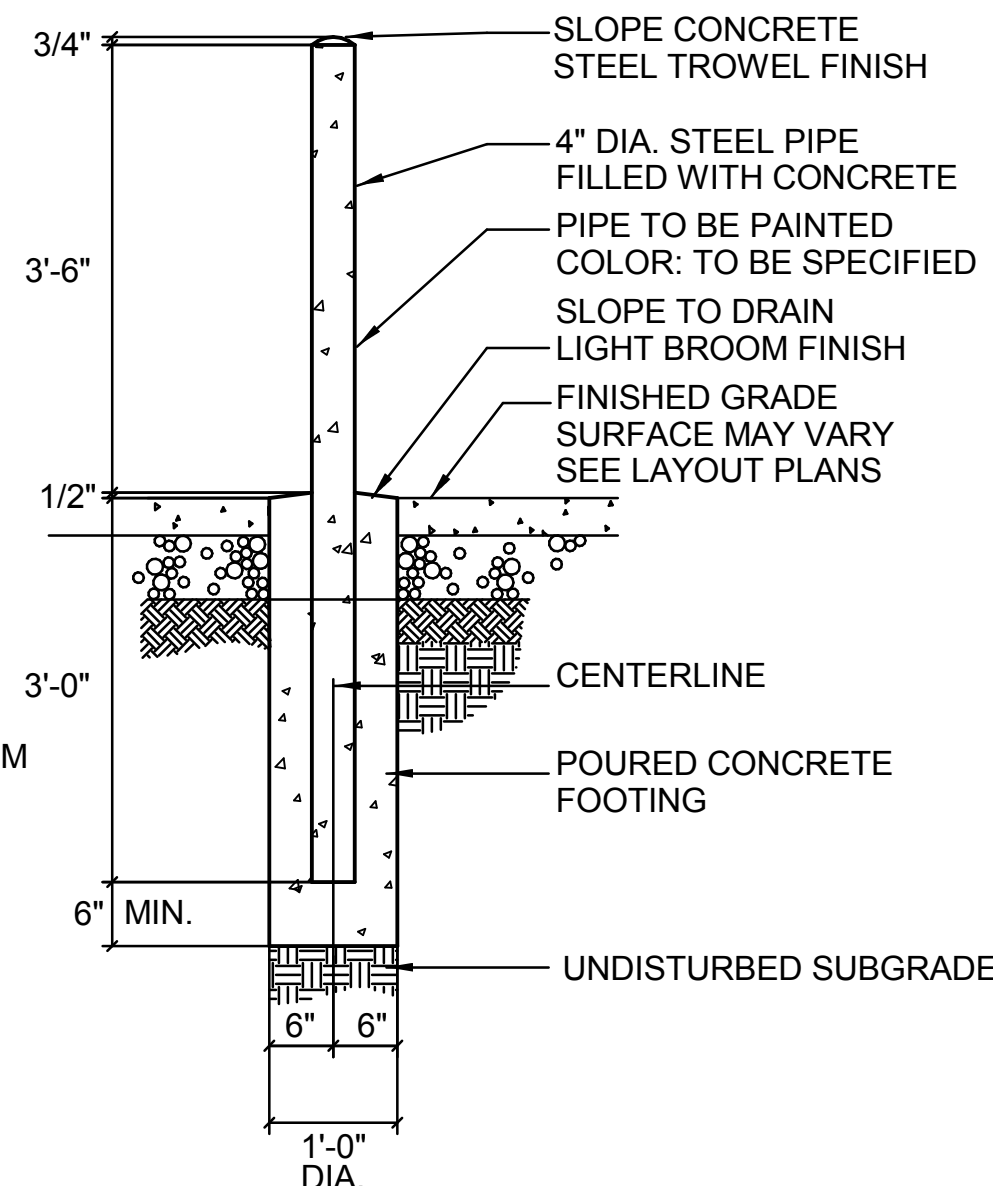
- SEE DISTRIBUTION DIAGRAM ON SHEET 5-E-801 FOR NEW FEEDER SIZES.
- CONCRETE INCASE ONE - 4" C. AND ONE - 2" C.
- EXISTING UNDERGROUND POWER TO BE MAINTAINED. INSTALL NEW UNDERGROUND POWER TO AVOID EXISTING WITHOUT ADJUSTMENT OF EXISTING.
- REMOVE AND REPLACE CONCRETE SIDEWALK AS NECESSARY FOR POWER INSTALLATION. REPLACED SIDEWALK SHALL MATCH EXISTING SECTION.
- REMOVE AND REPLACE CONCRETE CURB AND GUTTER AS NECESSARY FOR POWER INSTALLATION. REPLACED CURB AND GUTTER SHALL MATCH EXISTING SECTION.
- NEW UNDERGROUND POWER, CONDUIT, AND CONCRETE DUCTBANK. SEE DETAIL 9004/9101.
- REMOVE AND REPLACE CONCRETE PAVEMENT AS NECESSARY FOR POWER INSTALLATION. REPLACED CONCRETE SHALL MATCH EXISTING SECTION.



**6B EXISTING MAIN ELECTRICAL ROOM**  
3/32" = 1'-0"

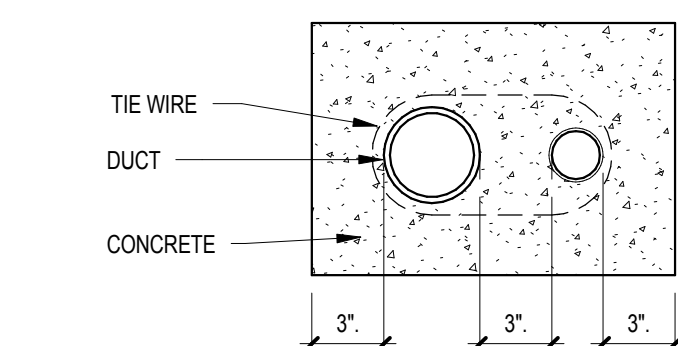
**ELEC POWER PLAN KEYNOTES**

- FEEDER ROUTING, SEE 6F-5-EP101 FOR CONTINUATION.
- 400A/3P ENCLOSED CIRCUIT BREAKER, SEE DISTRIBUTION RISER DIAGRAM ON SHEET 5-E-801.
- WALL MOUNT TRANSFORMER ABOVE TRANSFORMER BELOW.
- NEW TRANSFORMER AND PAD, SET TOP SURFACE 4" ABOVE TOP OF SIDEWALK ELEVATION.
- NEW BOLLARD, SEE DETAIL THIS SHEET.
- REMOVE AND REPLACE CONCRETE CURB AND GUTTER AS NECESSARY FOR POWER INSTALLATION. REPLACED CURB AND GUTTER SHALL MATCH EXISTING SECTION.
- REMOVE AND REPLACE CONCRETE PAVEMENT AS NECESSARY FOR POWER INSTALLATION. REPLACED CONCRETE SHALL MATCH EXISTING SECTION.
- EXISTING UNDERGROUND POWER TO BE MAINTAINED. INSTALL NEW UNDERGROUND POWER TO AVOID EXISTING WITHOUT ADJUSTMENT OF EXISTING.
- NEW UNDERGROUND POWER, CONDUIT AND CONCRETE DUCTBANK.
- CORE DRILL EXISTING FOUNDATION WALL FOR NEW CONCRETE DUCTBANK.
- REMOVE AND REPLACE INTERIOR CONCRETE SLAB AS NECESSARY FOR POWER INSTALLATION. REPLACED CONCRETE SLAB SHALL MATCH EXISTING SECTION.
- REMOVE AND REPLACE CONCRETE SIDEWALK AS NECESSARY FOR POWER INSTALLATION. REPLACED SIDEWALK SHALL MATCH EXISTING SECTION.
- UNDER ALTERNATE #1: PROVIDE 120V CRITICAL POWER CONNECTION TO PNEUMATIC TUBE SYSTEM. CIRCUIT TO NEAREST CRITICAL POWER CIRCUIT WITH SPARE CAPACITY.
- UNDER ALTERNATE #1: PROVIDE A 30A/3P HEAVY DUTY NON-FUSED DISCONNECT SWITCH AND 480V ELECTRICAL CONNECTION TO PNEUMATIC TUBE SYSTEM BLOWER. COORDINATE EXACT LOCATION WITH SYSTEM SUPPLIER.
- UNDER ALTERNATE #1: PROVIDE A 30A/3P HEAVY DUTY NON-FUSED DISCONNECT SWITCH AND 120V ELECTRICAL CONNECTION TO PNEUMATIC TUBE SYSTEM TRANSFER UNIT. COORDINATE EXACT LOCATION WITH SYSTEM SUPPLIER.
- STARTERS FOR ROOF MOUNTED EXHAUST FANS 5-EF-38, 5-EF-37, 5-EF-36. COORDINATE EXACT LOCATION WITH DIV. 22 CONTRACTOR PRIOR TO ROUGH-IN.

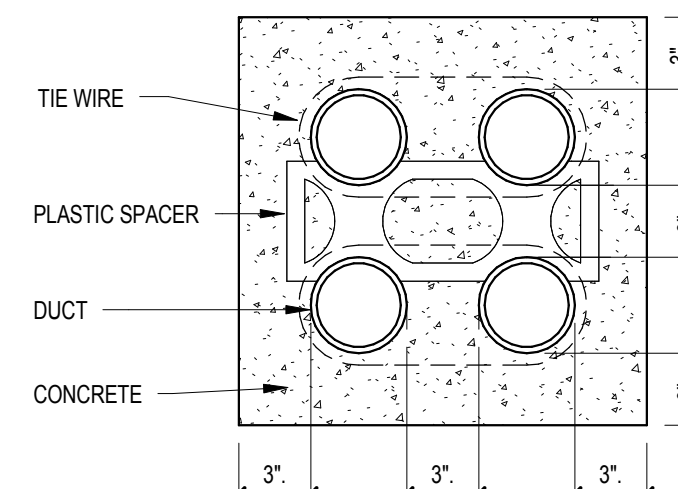


**GENERAL NOTES:**  
REMOVE AND CLEAN ALL CONCRETE OR DEBRIS FROM FACE OF STEEL PIPE.

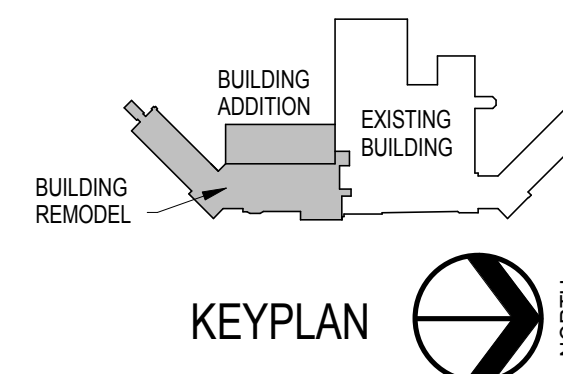
**8C CONCRETE BOLLARD DETAIL**  
3/16" = 1'-0"



**9D DUCT BANK DETAIL 9C**  
1/16" = 1'-0"



**9E DUCT BANK DETAIL**  
No Scale



**KEYPLAN**

**1F 1ST FLOOR POWER PLAN**  
1/8" = 1'-0"

**6F GROUND FLOOR - Existing Elec Floor Plan**  
1/16" = 1'-0"

**CONSULTANTS:**

**ARCHITECTS/ ENGINEERS:**

TSP, Inc.  
1112 N. West Ave.  
Sioux Falls, SD 57104  
phone: (605) 336-1160  
fax: (605) 336-7926  
www.teamtsp.com



**Drawing Title**  
1ST FLOOR POWER PLAN/ELECTRICAL PLANS

Approved: Project Director

**Project Title**  
Sioux Falls VA Health Care System  
Acute Inpatient Medical Unit Addition  
and Renovation

**Location**  
VA Medical Center  
2801 W. 22nd Street, PO Box 5046  
Sioux Falls, SD 57117-5046

**Date**  
08/06/2012

**Checked**  
MJJ

**Drawn**  
KAK

**Project Number**  
04100857

**Building Number**  
5

**Drawing Number**  
5-EP101

**Dwg. 109 of 123**

**Office of  
Construction  
and Facilities  
Management**

**Department of  
Veterans Affairs**