

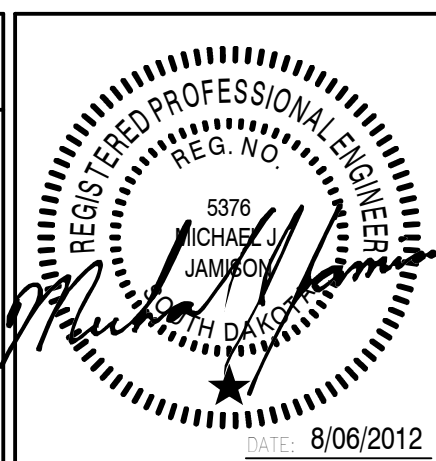
- ELEC DEMO GENERAL NOTES**
- A. ELECTRICAL ITEMS SHOWN DASHED AND IN FULL TONE LINES ON THIS PLAN INDICATE EXISTING EQUIPMENT TO BE REMOVED AND/OR RELOCATED BY DIVISION 26 (ALONG WITH ALL ASSOCIATED UNUSED CONDUIT AND WIRE), UNLESS NOTED OTHERWISE. ELECTRICAL ITEMS IN HALF TONE ARE EXISTING ITEMS TO REMAIN.
- B. ANY DEMOLITION REQUIRED ON THIS PLAN IS BASED ON INFORMATION SHOWN ON OWNER'S EXISTING PLANS AND AN ON-SITE REVIEW OF THE FACILITY. QUANTITIES, TYPES, AND LOCATIONS OF ITEMS SHOWN ARE BELIEVED TO BE ACCURATE. HOWEVER, DIVISION 26 CONTRACTOR SHALL BE RESPONSIBLE FOR REMOVING AND/OR RELOCATING ELECTRICAL EQUIPMENT AS REQUIRED TO ACCOMMODATE REMODELING.
- C. ANY EXISTING SWITCHES OR RECEPTACLES THAT ARE RELOCATED SHALL BE REPLACED BY NEW.
- D. WHEN EXISTING WALLS, CEILINGS, FLOORS, ELECTRICAL PANELS, LIGHT FIXTURES, SPEAKERS, OR OTHER OUTLETS ARE REMOVED AND/OR RELOCATED, DIVISION 26 CONTRACTOR SHALL EXTEND EXISTING CIRCUITING (CONDUIT AND WIRE) IF REQUIRED. INSTALL JUNCTION BOXES IN WALLS, CEILINGS OR FLOORS, IF REQUIRED TO CONTINUE CIRCUITING. REMOVE ALL UNUSED WIRE. REMOVE ALL UNUSED CONDUIT WHERE ACCESSIBLE. AND INSTALL NEW BLANK PLATES AS REQUIRED ON EXISTING OUTLET BOXES.
- E. EXISTING EQUIPMENT REMOVED AND NOT REUSED, AT OWNER'S OPTION, BE RETURNED TO OWNER. IF THE OWNER DOES NOT WISH TO KEEP THE ITEMS, THEY SHALL BECOME THE CONTRACTOR'S PROPERTY AND BE REMOVED FROM THE SITE, UNLESS OTHERWISE SPECIFIED OR SHOWN.
- F. CONTRACTOR SHALL DISCONNECT AND REUSE ANY EXISTING WIRELESS ACCESS POINTS THAT ARE LOCATED IN THE REMODELED SPACES. COORDINATE WITH VIA WIRELESS CONTRACTOR FOR EXACT LOCATIONS OF NEW ACCESS POINTS.

- ELEC DEMO PLAN KEYNOTES**
1. DISCONNECT EXISTING TELEMETRY CEILING MOUNTED AP AND ASSOCIATED CABLING BACK TO ROOM #042. SEE SHEET 5-EP102 FOR NEW LOCATIONS.
2. DISCONNECT AND REMOVE EXISTING SINGLE RECEPTACLES AND PROVIDE BLANK COVER PLATES OVER JUNCTION BOX.
3. DISCONNECT AND REMOVE EXISTING DUPLEX RECEPTACLE. PROVIDE NEW RECEPTACLE AS INDICATED ON SHEET 5-EP102.
4. PROVIDE TEMPORARY SUPPORT FOR CEILING MOUNTED LIGHT FIXTURES AND ELECTRICAL DEVICES AND REINSTALL INTO NEW CEILING IN SAME LOCATIONS. COORDINATE WITH E/C.
5. DISCONNECT AND REMOVE EXISTING QUAD RECEPTACLE. PROVIDE NEW QUAD RECEPTACLE AS INDICATED ON SHEET 5-EP101.



1F 2ND FLOOR ELECTRICAL DEMOLITION PLAN
1/8" = 1'-0"

CONSULTANTS:



ARCHITECTS/ ENGINEERS:

TSP, Inc.
1112 N. West Ave.
Sioux Falls, SD 57104
phone: (605) 336-1160
fax: (605) 336-1926
www.teamtsp.com



Drawing Title
2ND FLOOR ELECTRICAL DEMOLITION PLAN

Approved: Project Director

Project Title
**Sioux Falls VA Health Care System
Acute Inpatient Medical Unit Addition
and Renovation**

Location
VA Medical Center
2801 W. 22nd Street, PO Box 5046
Sioux Falls, SD 57117-5046

Date
08/06/2012

Checked
MJJ

Drawn
KAK

Project Number
04100857
Building Number
5

Drawing Number
5-ED102
Dwg. 104 of 123

Office of
Construction
and Facilities
Management



**FULLY SPRINKLERED
100% CONSTRUCTION DOCUMENTS**