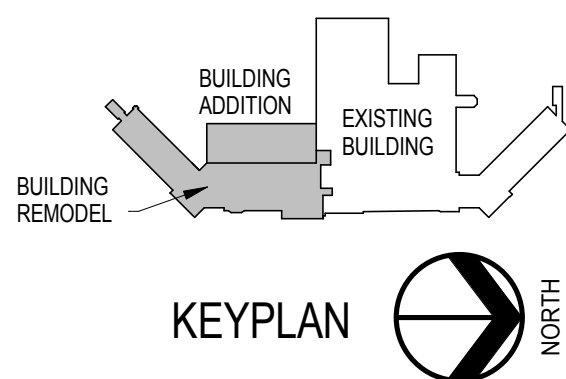


FIRE ALARM PLAN KEYNOTES

- 2" x 3" x 1/2" DEEP PULLBOX FOR FIRE ALARM CABLING. MOUNT IN CEILING CAVITY ABOVE ROOM #246.
- PROVIDE 2-1 1/2" RACEWAYS TO ROOM #231 (EXISTING FIRE ALARM HEADEND) FOR FIRE ALARM CABLING.
- MAINTAIN EXISTING SMOKE DETECTOR.
- PROVIDE SOUNDER BASE ON SMOKE DETECTOR IN ON-CALL ROOM.

NOTE:
AT ALL SMOKE AND COMBINATION DAMPER LOCATIONS SHOWN ON THIS DRAWING, DIV. 25 SHALL PROVIDE THE FOLLOWING:
-DUCT SMOKE DETECTOR
-REMOTE INDICATOR
-FA CONTROL MODULE INTERLOCKED WITH POWER CIRCUIT
SEE DETAIL 705-E-502 AND 715-E-502 TYPICAL AT ALL DAMPER LOCATIONS. CONFIRM ALL LOCATIONS WITH DIV. 23.



1F 2ND FLOOR FIRE DETECTION & ALARM PLAN
1/8" = 1'-0"

CONSULTANTS:

ARCHITECTS/ ENGINEERS:

TSP, Inc.
1112 N. West Ave.
Sioux Falls, SD 57104
phone: (605) 336-1160
fax: (605) 336-1926
www.teamtsp.com



Drawing Title
2ND FLOOR FIRE DETECTION & ALARM PLAN

Approved: Project Director

Project Title
Sioux Falls VA Health Care System
Acute Inpatient Medical Unit Addition
and Renovation

Location
VA Medical Center
2801 W. 22nd Street, PO Box 5046
Sioux Falls, SD 57117-5046

Date
08/06/2012

Checked
MJJ

Drawn
KAK

Project Number
04100857

Building Number
5

Drawing Number

5-FA102
Dwg. 116 of 123

Office of
Construction
and Facilities
Management

