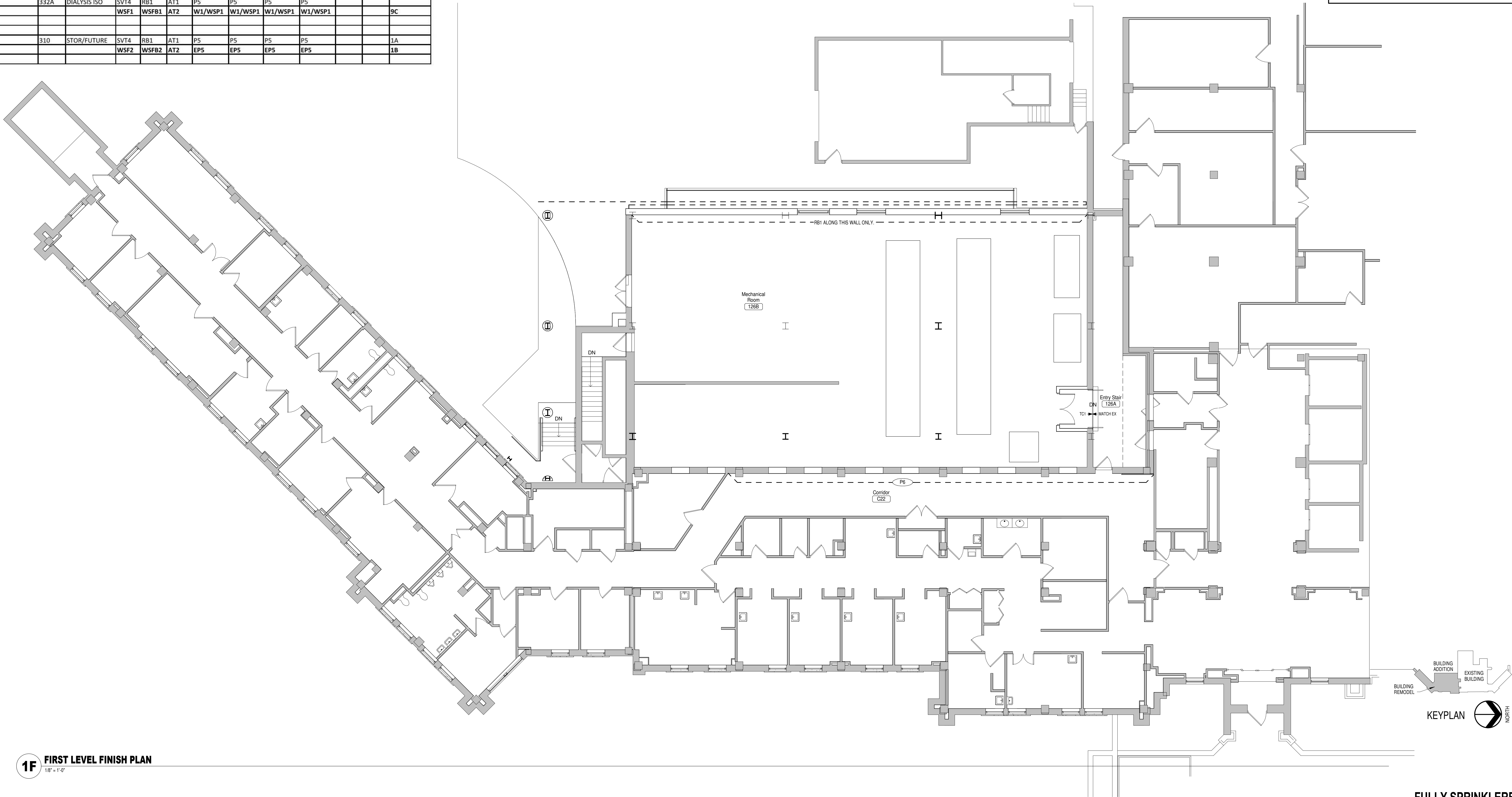


ALTERNATE ROOM FINISH SCHEDULE												
Bid Alternate	Room #	Room Name	Floor	Base	Ceiling	North	East	South	West	Cabinet	Counter	Remarks
Alternate #1	227A	NURSE WORK										NO CHANGE
	331B	NURSE WORK										NO CHANGE
Alternate #2												
	220	SIM. CONTROL										
	BASE									PLAM1	PLAM2	
	220A	SIMULATION	CPT1	RB2	AT1	P5	P5	P5	P5			1A
	BID ALT.		RSF1	RB1		P4/W1	W1	W1	P4			1B, 8
	220B	SIMULATION	CPT1	RB2	AT1	P5	P5	P5	P5			1A
Alternate #3												
	332	DIALYSIS	SVT4	RB1	AT1	P5	P5	P5	P5			
	BID-ALT.		WSF1	WSFB1	AT2	W1/WSP1	W1/WSP1	W1/WSP1	W1/WSP1	PLAM1	S1	9C
	332A	DIALYSIS ISO	SVT4	RB1	AT1	P5	P5	P5	P5			
Alternate #4												
	310	STOR/FUTURE	SVT4	RB1	AT1	P5	P5	P5	P5			1A
	BID-ALT.		WSF2	WSFB2	AT2	EP5	EP5	EP5	EP5			1B

FINISH PLAN GENERAL NOTES

- A. CLEAN ALL EXPOSED SURFACES PRIOR TO PRIMING AND PAINTING.
- B. PAINT ALL EXPOSED DUCTWORK, STRUCTURE, CONDUIT, ELECTRICAL BOXES, AND SIMILAR (UNLESS NOTED OTHERWISE).
- C. PAINT ALL EXPOSED CMU AND GYP BD. (UNLESS NOTED OTHERWISE).
- D. SEE REFLECTED CEILING PLANS FOR SOFFIT LOCATIONS AND HEIGHTS.
- E. PROVIDE A FLUSH TRANSITION WITHOUT THE USE OF A REDUCER STRIP AT THE CENTER OF DOORWAYS WHERE RESILIENT SHEET FLOORING AND SOLID VINYL TILE MEET. OTHERWISE, PROVIDE APPROPRIATE FLOORING TRANSITION REDUCER STRIPS AS NEEDED (CENTER UNDER DOOR AT DOOR LOCATIONS).
- F. NO RESILIENT SHEET FLOORING SEAMING SHOULD OCCUR IN FRONT OF DOORWAY OPENINGS.
- G. WOOD GRAIN DIRECTIONS FOR RESILIENT SHEET FLOORING AND SOLID VINYL TILE SHOULD BE INSTALLED IN AN EAST WEST DIRECTION TO THE BUILDING.
- H. INSTALL CORNER GUARDS (CG-) DIRECTLY ABOVE WALL BASE.
- I. PAINT CEILINGS/BULKHEADS (P7) UNLESS NOTED OTHERWISE. SEE ROOM FINISH SCHEDULE.
- J. PAINT METAL DOORS AND FRAMES (P10).



1F FIRST LEVEL FINISH PLAN  
1/8" = 1'-0"

CONSULTANTS:



ARCHITECTS/ ENGINEERS:

TSP, Inc.  
1112 N. West Ave.  
Sioux Falls, SD 57104  
phone: (605) 336-1160  
fax: (605) 336-7926  
www.teamtsp.com



Drawing Title  
1ST LEVEL FINISH PLAN

Approved: Project Director

Project Title  
Sioux Falls VA Health Care System  
Acute Inpatient Medical Unit Addition  
and Renovation

Location  
VA Medical Center  
2801 W. 22nd Street, PO Box 5046  
Sioux Falls, SD 57117-5046

Date  
08/06/12

Checked  
LAH

Drawn  
LAH

Project Number  
438-369

Building Number  
5

Drawing Number  
5-IN101

Dwg. 47 of 123

FULLY SPRINKLERED  
100% CONSTRUCTION DOCUMENTS

Office of  
Construction  
and Facilities  
Management

