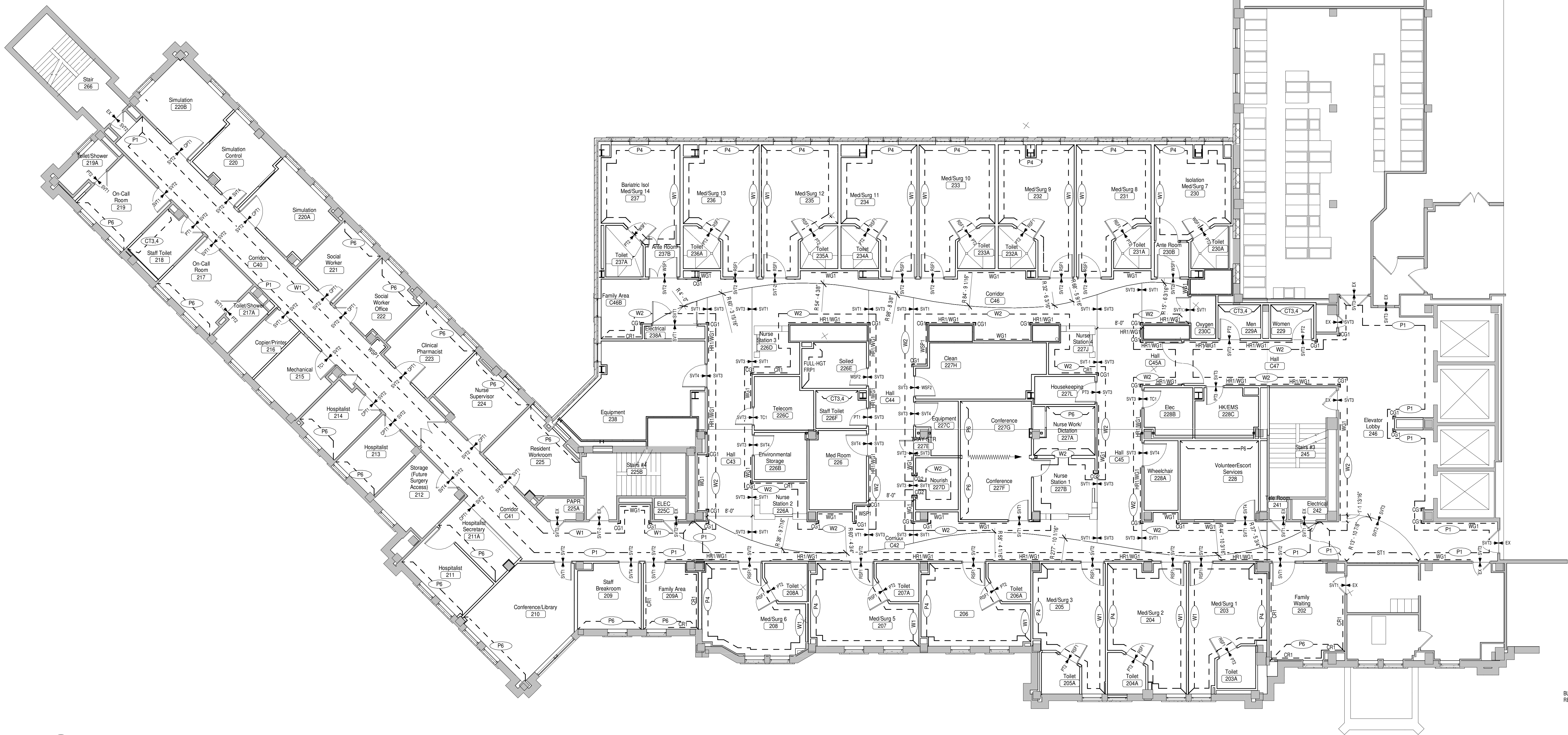


ALTERNATE ROOM FINISH SCHEDULE											
Bid Alternate	Room #	Room Name	Floor	Base	Ceiling	North	East	South	West	Casework	Remarks
Alternate #1	227A	NURSE WORK									NO CHANGE
	331B	NURSE WORK									NO CHANGE
Alternate #2											
	220	SIM. CONTROL									
BID ALT.										PLAM1 PLAM2	
BID ALT.	220A	SIMULATION	CPT1	RB2	AT1	P5	P5	P5	P5		1A
BID ALT.			RSF1	RB1		P4/W1	W1	W1	P4		1B, 8
BID ALT.	220B	SIMULATION	CPT1	RB2	AT1	P5	P5	P5	P5		1A
BID ALT.			RSF1	RB1		W1	W1	P4/W1	P4		1B, 8
Alternate #3											
	332	DIALYSIS	SVT4	RB1	AT1	P5	P5	P5	P5		
BID-ALT.			WSF1	WSFB1	AT2	W1/WSP1	W1/WSP1	W1/WSP1	W1/WSP1	PLAM1 S1	9C
BID-ALT.	332A	DIALYSIS ISO	SVT4	RB1	AT1	P5	P5	P5	P5		
BID-ALT.			WSF1	WSFB1	AT2	W1/WSP1	W1/WSP1	W1/WSP1	W1/WSP1		9C
Alternate #4											
	310	STOR/FUTURE	SVT4	RB1	AT1	P5	P5	P5	P5		1A
BID-ALT.			WSF2	WSFB2	AT2	EP5	EP5	EP5	EP5		1B

FINISH PLAN GENERAL NOTES

- A. CLEAN ALL EXPOSED SURFACES PRIOR TO PRIMING AND PAINTING.
- B. PAINT ALL EXPOSED DUCTWORK, STRUCTURE, CONDUIT, ELECTRICAL BOXES, AND SIMILAR (UNLESS NOTED OTHERWISE).
- C. PAINT ALL EXPOSED CMU AND GYP BD. (UNLESS NOTED OTHERWISE).
- D. SEE REFLECTED CEILING PLANS FOR SOFFIT LOCATIONS AND HEIGHTS.
- E. PROVIDE A FLUSH TRANSITION WITHOUT THE USE OF A REDUCER STRIP AT THE CENTER OF DOORWAYS WHERE RESILIENT SHEET FLOORING AND SOLID VINYL TILE MEET. OTHERWISE, PROVIDE APPROPRIATE FLOORING TRANSITION REDUCER STRIPS AS NEEDED (CENTER UNDER DOOR AT DOOR LOCATIONS).
- F. NO RESILIENT SHEET FLOORING SEAMING SHOULD OCCUR IN FRONT OF DOORWAY OPENINGS.
- G. WOOD GRAIN DIRECTIONS FOR RESILIENT SHEET FLOORING AND SOLID VINYL TILE SHOULD BE INSTALLED IN AN EAST-WEST DIRECTION TO THE BUILDING.
- H. INSTALL CORNER GUARDS (CG-1) DIRECTLY ABOVE WALL BASE.
- I. PAINT GUTTERS/BULKHEADS (P7) UNLESS NOTED OTHERWISE. SEE ROOM FINISH SCHEDULE.
- J. PAINT METAL DOORS AND FRAMES (P10).



1 SECOND LEVEL FINISH PLAN

1/8" = 1'-0"

CONSULTANTS:



RPA Design  
Suite 300  
Charlotte, NC 28210  
Phone 704-887-3500  
Fax 704-887-3507



ARCHITECTS/ ENGINEERS:

TSP, Inc.  
1112 N. West Ave.  
Sioux Falls, SD 57104  
phone: (605) 336-1160  
fax: (605) 336-7926  
www.teamtsp.com



To Solve. To Excel. Together.

Drawing Title  
2ND LEVEL FINISH PLAN

Approved: Project Director

Project Title  
Sioux Falls VA Health Care System  
Acute Inpatient Medical Unit Addition  
and Renovation

Location  
VA Medical Center  
2901 W. 22nd Street, PO Box 5046  
Sioux Falls, SD 57117-5046

Date  
08/06/12

Checked  
LAH

Drawn  
LAH

Project Number  
438-369

Building Number  
5

Drawing Number

5-IN102  
Dwg. 48 of 123

Office of  
Construction  
and Facilities  
Management

