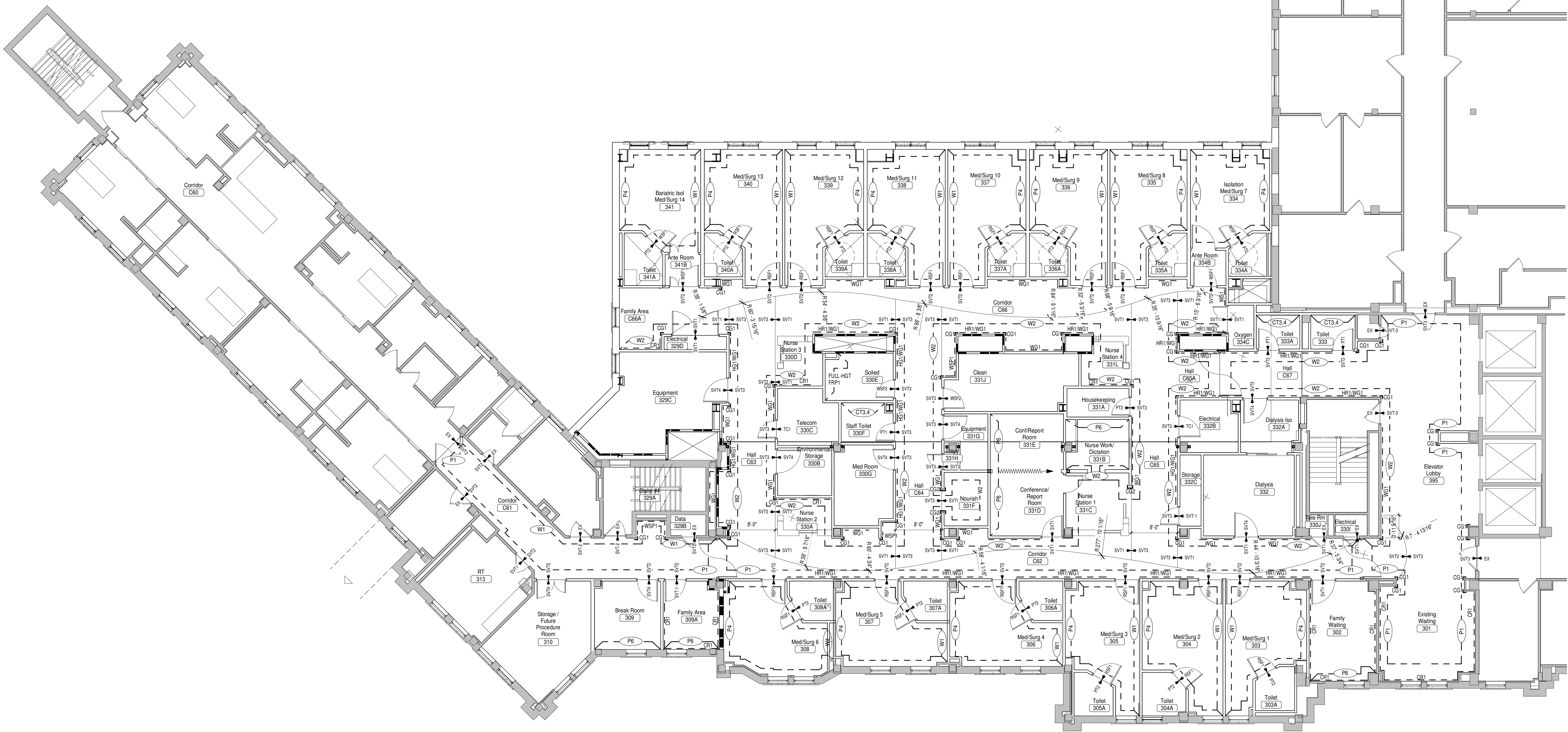


ALTERNATE ROOM FINISH SCHEDULE											
Bid Alternate	Room #	Room Name	Floor	Base	Ceiling	North	East	South	West	Cabinet	Counter
Alternate #1	227A	NURSE WORK									
	331B	NURSE WORK									
Alternate #2	220	SIM. CONTROL									
BASE	220A	SIMULATION	CPT1	RB2	AT1	P5	P5	P5	P5	PLAM1	PLAM2
BID-ALT.			RSF1	RB1		P4/W1	W1	W1	P4		
BASE	220B	SIMULATION	CPT1	RB2	AT1	P5	P5	P5	P5		
BID-ALT.			RSF1	RB1		W1	W1	P4/W1	P4		
Alternate #3	332	DIALYSIS	SVT4	RB1	AT1	P5	P5	P5	P5		
BASE			WSF1	WSF81	AT2	W1/WSP1	W1/WSP1	W1/WSP1	W1/WSP1	PLAM1	S1
BID-ALT.	332A	DIALYSIS ISO	SVT4	RB1	AT1	P5	P5	P5	P5		
BASE			WSF1	WSF81	AT2	W1/WSP1	W1/WSP1	W1/WSP1	W1/WSP1		
BID-ALT.											
Alternate #4	310	STOR/FUTURE	SVT4	RB1	AT1	P5	P5	P5	P5		
BASE			WSF2	WSF82	AT2	EP5	EP5	EP5	EP5		
BID-ALT.											

FINISH PLAN GENERAL NOTES

- A. CLEAN ALL EXPOSED SURFACES PRIOR TO PRIMING AND PAINTING.
- B. PAINT ALL EXPOSED DUCTWORK, STRUCTURE, CONDUIT, ELECTRICAL BOXES, AND SIMILAR (UNLESS NOTED OTHERWISE).
- C. PAINT ALL EXPOSED CMU AND GYP BD. (UNLESS NOTED OTHERWISE).
- D. SEE REFLECTED CEILING PLANS FOR SOFFIT LOCATIONS AND HEIGHTS.
- E. PROVIDE A FLUSH TRANSITION WITHOUT THE USE OF A REDUCER STRIP AT THE CENTER OF DOORWAYS WHERE RESILIENT SHEET FLOORING AND SOLID VINYL TILE MEET. OTHERWISE, PROVIDE APPROPRIATE FLOORING TRANSITION REDUCER STRIPS AS NEEDED (CENTER UNDER DOOR AT DOOR LOCATIONS).
- F. NO RESILIENT SHEET FLOORING SEAMING SHOULD OCCUR IN FRONT OF DOORWAY OPENINGS.
- G. WOOD GRAIN DIRECTIONS FOR RESILIENT SHEET FLOORING AND SOLID VINYL TILE SHOULD BE INSTALLED IN AN EAST-WEST DIRECTION TO THE BUILDING.
- H. INSTALL CORNER GUARDS (CG-) DIRECTLY ABOVE WALL BASE.
- I. PAINT CEILINGSBULKHEADS (PT) UNLESS NOTED OTHERWISE. SEE ROOM FINISH SCHEDULE.
- J. PAINT METAL DOORS AND FRAMES (P10).



1 THIRD LEVEL FINISH PLAN
1/8" = 1'-0"

CONSULTANTS:



RPA Design
Suite 500
Charlotte, NC 28210
Phone 704-887-3500
Fax 704-887-3507



ARCHITECTS/ ENGINEERS:

TSP, Inc.
1112 N. West Ave.
Sioux Falls, SD 57104
phone: (605) 336-1160
fax: (605) 336-7926
www.teamtsp.com



To Solve. To Excel. Together.

Drawing Title
3RD LEVEL FINISH PLAN

Approved: Project Director

Project Title
Sioux Falls VA Health Care System
Acute Inpatient Medical Unit Addition
and Renovation

Location
VA Medical Center
2901 W. 22nd Street, PO Box 5046
Sioux Falls, SD 57117-5046

Date
08/06/12

Checked
LAH

Drawn
LAH

Project Number
438-369
Building Number
5

Drawing Number
5-IN103

Dwg. 49 of 123

Office of
Construction
and Facilities
Management

