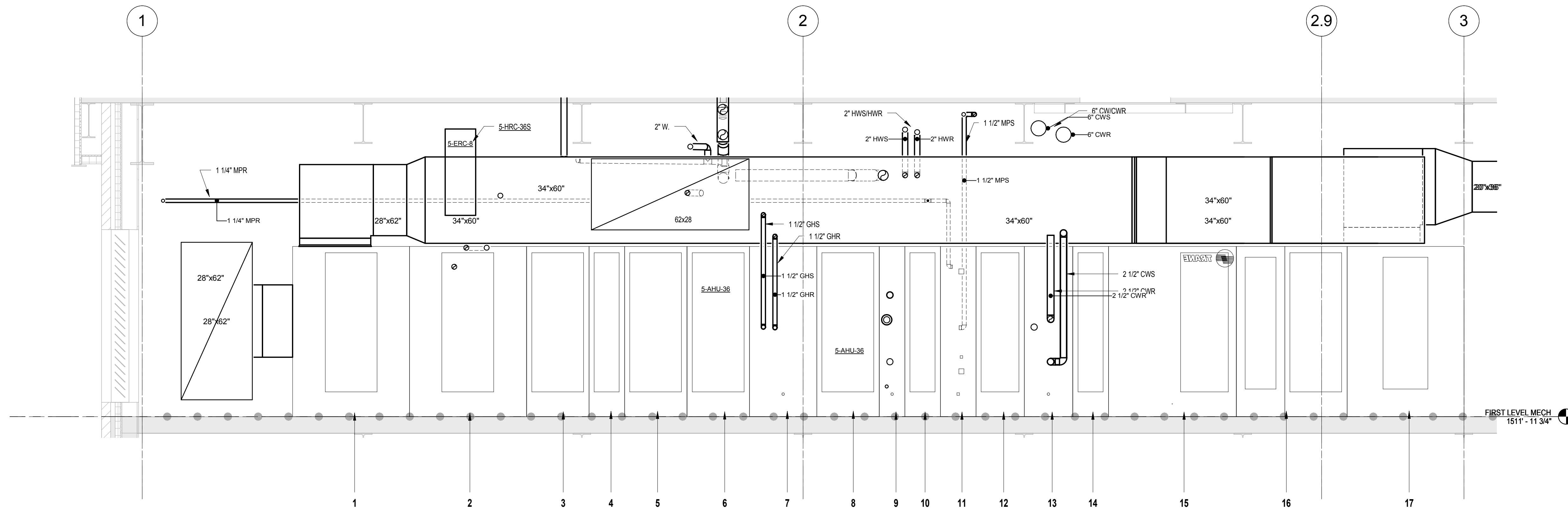


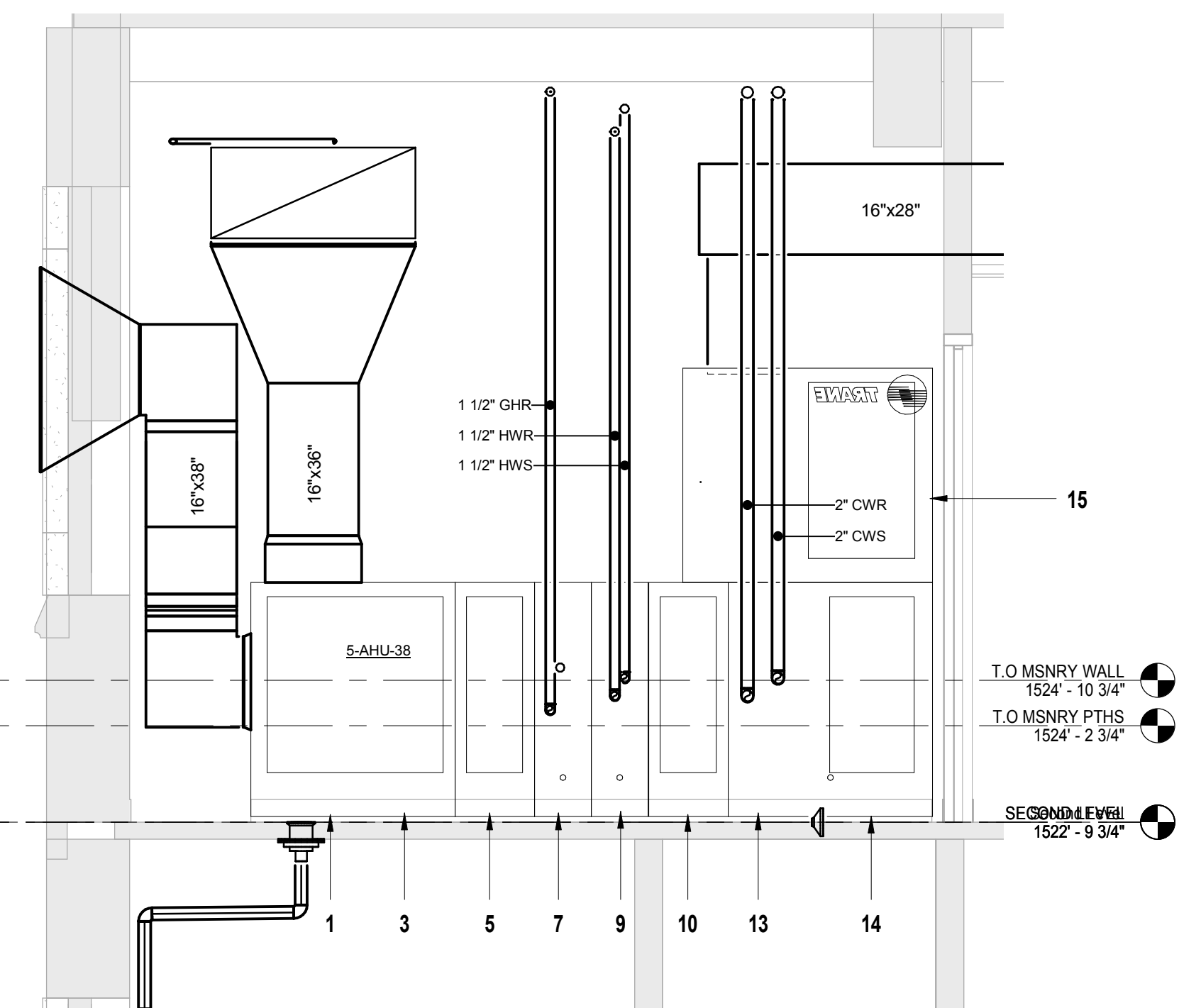
#### AHU SECTIONS

1. AIR MIXING MODULE AND DAMPERS
2. AIR BLENDER
3. FILTER SECTION - 2" MERV 8
4. ACCESS SECTION
5. FILTER SECTION - 8" MERV 11
6. ACCESS SECTION
7. GLYCOL PRE-HEAT COIL SECTION
8. ACCESS SECTION
9. HEATING COIL SECTION
10. ACCESS SECTION
11. HUMIDIFIER SECTION
12. ACCESS SECTION
13. COOLING COIL SECTION
14. ACCESS SECTION
15. FAN SECTION
16. FILTER SECTION - 12" MERV 14
17. DISCHARGE PLENUM

**1C 5-AHU-37 SECTION**  
1/2" = 1'-0"



**1F 5-AHU-36 SECTION**  
1/2" = 1'-0"



**7F 5-AHU-38 SECTION**  
1/2" = 1'-0"

#### CONSULTANTS:

#### ARCHITECTS/ ENGINEERS:



TSP, Inc.  
1112 N. West Ave.  
Sioux Falls, SD 57104  
phone: (605) 336-1160  
fax: (605) 336-7926  
www.teamtsp.com



Drawing Title  
**MECHANICAL SECTIONS**

Approved: Project Director

Project Title  
**Sioux Falls VA Health Care System  
Acute Inpatient Medical Unit Addition  
and Renovation**

Location  
VA Medical Center  
2801 W. 22nd Street, PO Box 5046  
Sioux Falls, SD 57117-5046

Date  
08/06/2012

Checked  
BSW

Drawn  
BSW

Project Number  
04100857

Building Number  
**5**

Drawing Number

**5-MH505**  
Dwg. 97 of 123

Office of  
Construction  
and Facilities  
Management

