

**PLUMBING DEMO GENERAL NOTES**

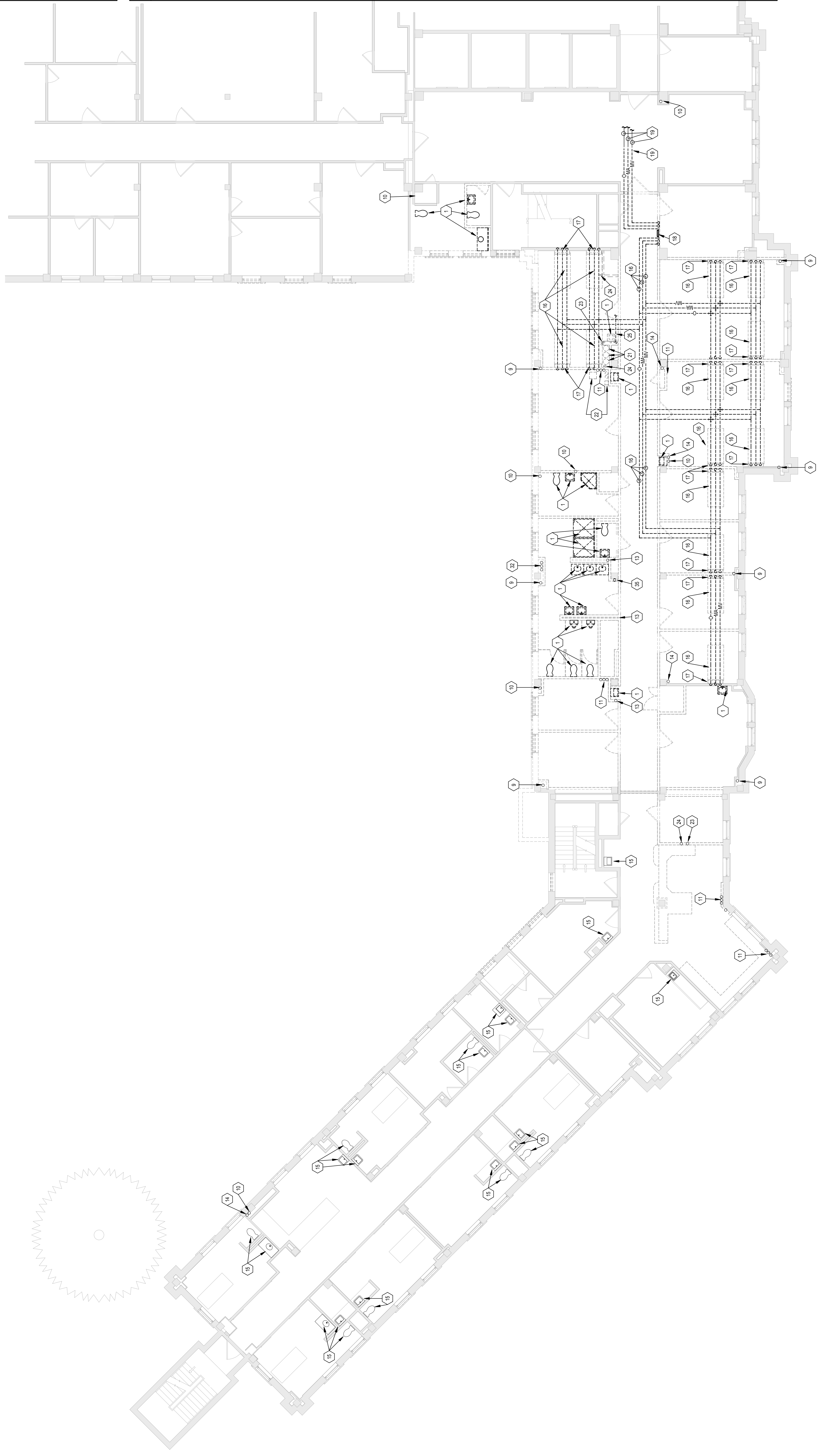
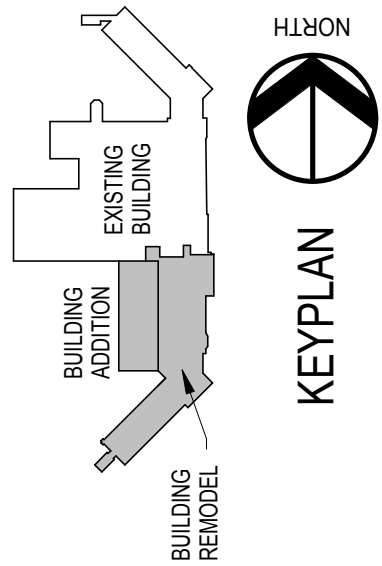
A. WHERE EQUIPMENT AND FIXTURES ARE NOTED TO BE REMOVED, THE SERVICES FOR REMOVED EQUIPMENT AND OR FIXTURES SHALL BE REMOVED BACK TO MAINS AND CAPPED OFF UNLESS OTHERWISE INDICATED.

B. CONTRACTOR SHALL VERIFY THE SIZE AND LOCATION OF EXISTING SERVICES. FIRE SPRINKLER DEMOLITION- REMOVE ALL SPRINKLERS FROM CEILING IN PATIENT BEDS AND SANITARY WASTE. REMOVE ALL SANITARY WASTE PROTECTION PIPING IN SYSTEM MAIN PIPING.

C. DEMOLITION WORKS TO OCCUR AFTER HOURS TO PREVENT DISRUPTION TO THE MEDICAL CENTER.

- PLUMBING DEMO KEYNOTES**
1. REMOVE PLUMBING FIXTURE AND RELATED PIPING.
  2. REMOVE ROOF DRAIN AND ROOF DRAIN PIPING.
  3. 1" COP SANITARY VENT THRU ROOF. REMOVE FLASHING WHERE VENT PENETRATES ROOF. VENT PIPING TO REMAIN AND WILL BE EXTENDED THRU NEW CONSTRUCTION AREA ABOVE.
  4. EXPOSED PUMP DISCHARGE PIPING TO REMAIN.
  5. 4" SANITARY VENT THRU ROOF. REMOVE FLASHING WHERE VENT PENETRATES ROOF. VENT PIPING TO REMAIN AND WILL BE EXTENDED THRU NEW CONSTRUCTION AREA ABOVE.
  6. ROOF DRAIN AND ROOF DRAIN PIPING TO REMAIN.
  7. DISCONNECT BRANCH ABOVE DRAIN PIPING FROM MAIN. BRANCH PIPING TO REMAIN AND WILL BE CONNECTED TO NEW ROOF DRAIN PIPING.
  8. REMOVE HORIZONTAL PORTION OF ROOF DRAIN PIPING AND BLOW/TURNED DOWN. VERTICAL PORTION OF ROOF DRAIN PIPING WILL REMAIN AND WILL BE CONNECTED TO NEW ROOF DRAIN PIPING.
  9. ROOF DRAIN PIPING TO REMAIN.
  10. SANITARY WASTE PIPING TO REMAIN.
  11. CW, HW AND RHW PIPING TO REMAIN.
  12. REMOVE VERTICAL ROOF DRAIN PIPING CAP NEAR FLOOR.
  13. DISCONNECT SANITARY VENT TO ABOVE CEILING. VENT RISER UP TO REMAIN FOR RECONNECTION.
  14. SANITARY VENT PIPING TO REMAIN.
  15. PLUMBING FIXTURE AND PIPING TO REMAIN.
  16. REMOVE MEDICAL GAS PIPING.
  17. DISCONNECT MEDICAL GAS PIPING FROM HEAD WALL AT PATIENT BED.
  18. REMOVE MEDICAL GAS ZONE VALVES AND ASSOCIATED PIPING.
  19. REMOVE MEDICAL GAS PIPING TO POINT OF NEW CONNECTION.
  20. REMOVE MEDICAL GAS PIPING TO RISERS. CAP PIPING AT RISERS.
  21. REMOVE SANITARY FILTER TANKS AND PIPING. SALVAGE TO BE INSTALL IN A NEW LOCATION.
  22. REMOVE CIRCULATING PUMP PIPING. V.F.D. AND CONTROLS. SALVAGE TO BE INSTALL IN A NEW LOCATION.
  23. REMOVE STAND-PIPE WASTE AND RELATED PIPING.
  24. REMOVE 3/4" DIALYSIS WATER SUPPLY, VALVE, AND VACUUM BREAKER.
  25. REMOVE 1" DIALYSIS WATER BACK TO MAIN VALVE AND CAP.
  26. REMOVE HOSE BIBB AND RELATED PIPING.
  27. REMOVE VENT RISER UP/DOWN.
  28. DISCONNECT SANITARY WASTE TO ABOVE CEILING. WASTE RISER UP TO REMAIN FOR RECONNECTION.
  29. REMOVE WASTE RISER UP/DOWN.
  30. REMOVE VENT RISER UP.
  31. REMOVE SCV TO MAIN AND DRAIN. RISERS ARE TO REMAIN UNTIL PIPING CONNECTIONS FROM NEW RISERS ARE MADE.
  32. REMOVE SCV DRAIN DOWN TO ABOVE CEILING. RISERS ARE TO REMAIN UNTIL PIPING CONNECTIONS FROM NEW RISERS ARE MADE FOR FOURTH FLOOR.
  33. REMOVE 1/2" CW, HW, RHW, DRAIN TO MAINS AND CAP. PIPING TO REMAIN UNTIL PIPING CONNECTIONS FROM NEW RISERS ARE MADE FOR FOURTH FLOOR.
  34. REMOVE SCV UP/DOWN. RISER IS TO REMAIN UNTIL PIPING CONNECTIONS FROM NEW RISER IS MADE FOR FOURTH FLOOR.
  35. REMOVE SCV ABOVE CEILING. RISER IS TO REMAIN UNTIL CONNECTIONS FROM NEW RISER IS MADE FOR FOURTH FLOOR.
  36. REMOVE SCV TO MAIN AND CAP. PIPING TO REMAIN UNTIL PIPING CONNECTIONS FROM NEW RISER IS MADE FOR FOURTH FLOOR.

NOTE: NOT ALL VENTURES MAY BE USED ON EACH PLAN.



**1F** 3RD FLOOR PLUMBING DEMOLITION PLAN  
1/8" = 1'-0"

**FULLY SPRINKLERED**  
**100% CONSTRUCTION DOCUMENTS**

|                     |  |   |  |  |  |                                    |  |   |  |
|---------------------|--|---|--|--|--|------------------------------------|--|---|--|
| <b>CONSULTANTS:</b> |  | <b>ARCHITECTS/ENGINEERS:</b>  |  | <b>Project Title</b><br>Sioux Falls VA Health Care System<br>Acute Inpatient Medical Unit Addition<br>and Renovation |  | <b>Project Number</b><br>04-100987 |  | <b>Office of Construction and Facilities Management</b> |  |
|                     |  | TSP Inc.<br>1112 N. West Ave.<br>Sioux Falls, SD 57104<br>phone: (605) 336-1160<br>fax: (605) 336-7926<br>www.tspinc.com<br>To Solve. To Excel. Together. |  | Location<br>1112 N. West Ave.<br>Sioux Falls, SD 57104<br>Sioux Falls, SD 57117-5406                                 |  | Building Number<br>5               |  | Department of Veterans Affairs                          |  |
|                     |  | Approved: Project Director  |  | Title<br>08/06/2012  |  | Checked<br>BSW                     |  | Drawn<br>RAK  |  |