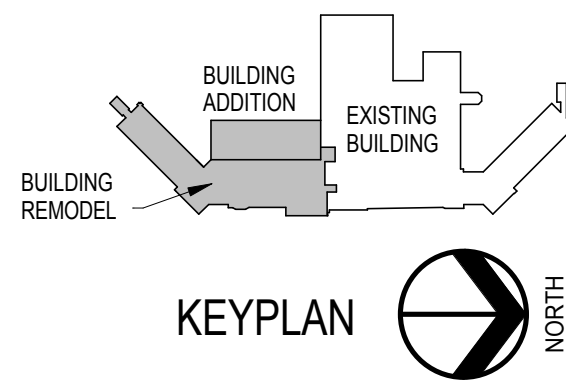


- PLUMBING PLAN GENERAL NOTES**
- A. SERVICES TO ALL ADJACENT AREAS (HORIZONTAL AND VERTICAL) MUST BE MAINTAINED DURING CONSTRUCTION. EXISTING PIPING SHALL REMAIN IN PLACE UNTIL THE NEW SERVICES ARE CONNECTED, OR TEMPORARY PIPING SHALL BE PROVIDED DURING CONSTRUCTION IF THE EXISTING IS REMOVED BEFORE THE NEW SERVICES ARE IN PLACE.
  - B. PLUMBING CONTRACTOR SHALL MARK ALL NEW FLOOR PENETRATIONS BEFORE CONSTRUCTION OF NEW WALLS BEGINS.
  - C. COORDINATE PIPE ROUTING WITH STRUCTURAL SYSTEM AND WITH OTHER TRADES.
  - D. THE EXISTING FLOOR CONSTRUCTION IS RIBBED CONCRETE SLAB WITH STEEL REINFORCEMENT BARS IN THE SLAB AND THE RISER. THE PLUMBING CONTRACTOR SHALL X-RAY THE FLOOR WHERE NEW PIPE PENETRATIONS OCCUR. LOCATE NEW PIPE PENETRATIONS TO AVOID CUTTING THE EXISTING STEEL REINFORCEMENT BARS.
  - E. FLOOR MOUNTED TOILETS IN THE REMODELED AREAS SHALL BE INSTALLED IN LOCATIONS THAT WILL AVOID CUTTING EXISTING STEEL REINFORCEMENT IN THE FLOOR STRUCTURE FOR WASTE AND VENT PIPING PENETRATIONS. OFFSET FLOOR MOUNTING FLANGES SHALL BE USED AS NECESSARY TO PLACE THE FIXTURES AS CLOSE AS POSSIBLE TO WHERE INDICATED ON THE DRAWINGS.

- SHEET KEYNOTES**
- 1. 4\"/>



**1F 4TH FLOOR PLUMBING PLAN**  
1/8" = 1'-0"

**FULLY SPRINKLERED  
100% CONSTRUCTION DOCUMENTS**

<b>CONSULTANTS:</b>			<b>ARCHITECTS/ ENGINEERS:</b>  TSP, Inc. 1112 N. West Ave. Sioux Falls, SD 57104 phone: (605) 336-1160 fax: (605) 336-7926 www.teamtsp.com  To Solve. To Excel. Together.		<b>Drawing Title</b> <b>4TH FLOOR PLUMBING PLAN</b>		<b>Project Title</b> <b>Sioux Falls VA Health Care System Acute Inpatient Medical Unit Addition and Renovation</b>		<b>Project Number</b> 04100857		<b>Office of Construction and Facilities Management</b> 	
					<b>Approved: Project Director</b>		<b>Location</b> VA Medical Center 2801 W. 22nd Street, PO Box 5046 Sioux Falls, SD 57117-5046		<b>Building Number</b> <b>5</b>			
						<b>Date</b> 08/06/2012		<b>Checked</b> BSW		<b>Drawn</b> RAK		<b>5-PL104</b> Dwg. 68 of 123