

M	JAY R. SMITH MFG CO.[®] DISTRIBUTED by ACUDOR/ACORN 1125 Squires Beach Road, Pickering, ON L1W 3T9 Tel: (905) 427-9957 Email: sales@acudoracornltd.com www.acudoracornltd.com				LOCATION 				
DRAWING NUMBER S5812-CAN	<h1 style="margin: 0;">NON-FREEZE GROUND HYDRANT</h1>								
	<h2 style="margin: 0;">1 1/4 (32), 1 1/2 (38) or 2" (51) CONNECTIONS</h2>								
SIZE A	<p>FUNCTION: A Hydrant with a hinged covered box, for positive protection against freezing when buried outside or in unheated areas and the closing valve is located below the frost line. When hydrant is shut off, water is drained from the casing through the drain hole in the valve housing. The locking cover prevents unauthorized use.</p>								
SCALE: NONE									
DATE: 12-8-88									
APPROVED BY: CR	<p>NOTES:</p> <ol style="list-style-type: none"> 1. Recommended Box-out 9 1/2(240) x 9 1/2(240). 2. All Jay R. Smith hydrants are manufactured with "NO-LEAD" brazing rings and USDA approved lubricants. 3. The AB1953, California Lead Law, and NSF/ANSI Standard 61-2008 - Drinking Water System Components are not applicable to Jay R. Smith hydrants as they do not convey/dispense water for human consumption through drinking or cooking. 4. Dimensions shown in parentheses are in millimeters. 5. FOR IRRIGATION PURPOSES ONLY. 								
CHECKED BY: CR	<p>B(Depth of Bury) = 02(610), 03(915), 04(1220), 05(1525), 06(1830), 07(2135) or 08(2438) Feet</p>								
DRAWN BY: WAS	<table style="width: 100%; border: none;"> <tr> <td style="width: 33%; vertical-align: top;"> REGULARLY FURNISHED: Bronze Non-Freeze Ground Hydrant with "T" Handle Key and Cast Iron Hydrant Box Inlet and Hose Connection. Size Furnished as Indicated by Figure Number Selected. </td> <td style="width: 33%; vertical-align: top;"> VARIATIONS: <input type="checkbox"/> 1/8" (3) NPT Drain Hole in Box -N <input type="checkbox"/> 1/8" (3) NPT Drain Hole in Valve Housing -NV <input type="checkbox"/> "Water" Cast on Cover -W </td> <td style="width: 33%; vertical-align: top;"> OPTIONAL MATERIALS: <input type="checkbox"/> Nickel Bronze Box -NB <input type="checkbox"/> Polished Bronze Box -PB <input type="checkbox"/> Rough Bronze Box -RB </td> </tr> </table>					REGULARLY FURNISHED: Bronze Non-Freeze Ground Hydrant with "T" Handle Key and Cast Iron Hydrant Box Inlet and Hose Connection. Size Furnished as Indicated by Figure Number Selected.	VARIATIONS: <input type="checkbox"/> 1/8" (3) NPT Drain Hole in Box -N <input type="checkbox"/> 1/8" (3) NPT Drain Hole in Valve Housing -NV <input type="checkbox"/> "Water" Cast on Cover -W	OPTIONAL MATERIALS: <input type="checkbox"/> Nickel Bronze Box -NB <input type="checkbox"/> Polished Bronze Box -PB <input type="checkbox"/> Rough Bronze Box -RB	
REGULARLY FURNISHED: Bronze Non-Freeze Ground Hydrant with "T" Handle Key and Cast Iron Hydrant Box Inlet and Hose Connection. Size Furnished as Indicated by Figure Number Selected.	VARIATIONS: <input type="checkbox"/> 1/8" (3) NPT Drain Hole in Box -N <input type="checkbox"/> 1/8" (3) NPT Drain Hole in Valve Housing -NV <input type="checkbox"/> "Water" Cast on Cover -W	OPTIONAL MATERIALS: <input type="checkbox"/> Nickel Bronze Box -NB <input type="checkbox"/> Polished Bronze Box -PB <input type="checkbox"/> Rough Bronze Box -RB							
5812,5813,5814-CAN	<h2 style="margin: 0;">TECHNICAL DATA</h2>								
	<p>Non-Freeze Ground Hydrants are supplied with a special valve housing which prevents freezing of hydrant during non-use periods. The valve housing must be installed below the frost line which prevails for the area of installation. The valve housing has a drain hole which drains the casing when the hydrant is shut off. In effect, there is no water in the casing during non-use periods. Since water from the drain hole is normally allowed to drain into the ground, the valve housing should be set in a bed of gravel. Water drained from the casing can then seep into the ground.</p> <p>Some locations which require Non-Freeze Ground Hydrants cannot tolerate water draining from the drain hole. Examples are parking garages, plazas and roof decks used for recreational purposes. Often in these types of applications the valve housing will protrude into a finished area which is not subject to freezing temperatures. To eliminate the problem of water drainage in this type of installation, Smith can supply a tapped drain hole in the hydrant box and a tapped drain hole in the valve housing. Through these tapped drain holes, water accumulation in the box and the water from the valve housing drain hole can be piped to a suitable drain.</p>								
FIGURE NUMBER	M L K J	2-5-13 6-13-11 5-17-11 10-7-09	Revised Notes Revised Note Added Note Revised Notes	TBW TBW TBW RN	CL CL CL CL	WEIGHT POUNDS	VOLUME CUBIC FEET	FIGURE NUMBER	
REV.	DATE	DESCRIPTION			BY	CKD. BY	5812,5813,5814-CAN		

WE CAN ASSUME NO RESPONSIBILITY FOR USE OF SUPERSEDED OR VOID DATA

DIMENSIONS ARE SUBJECT TO MANUFACTURERS TOLERANCE AND CHANGE WITHOUT NOTICE



JAY R. SMITH MFG CO.®

DISTRIBUTED by ACUDOR/ACORN

1125 Squires Beach Road, Pickering, ON L1W 3T9
Tel: (905) 427-9957 Email: sales@acudoracornltd.com
www.acudoracornltd.com

LOCATION

B

DRAWING NUMBER
S5812BS-CAN

SIZE
A

SCALE:
NONE

DATE:
1-23-85

APPROVED BY:
TD

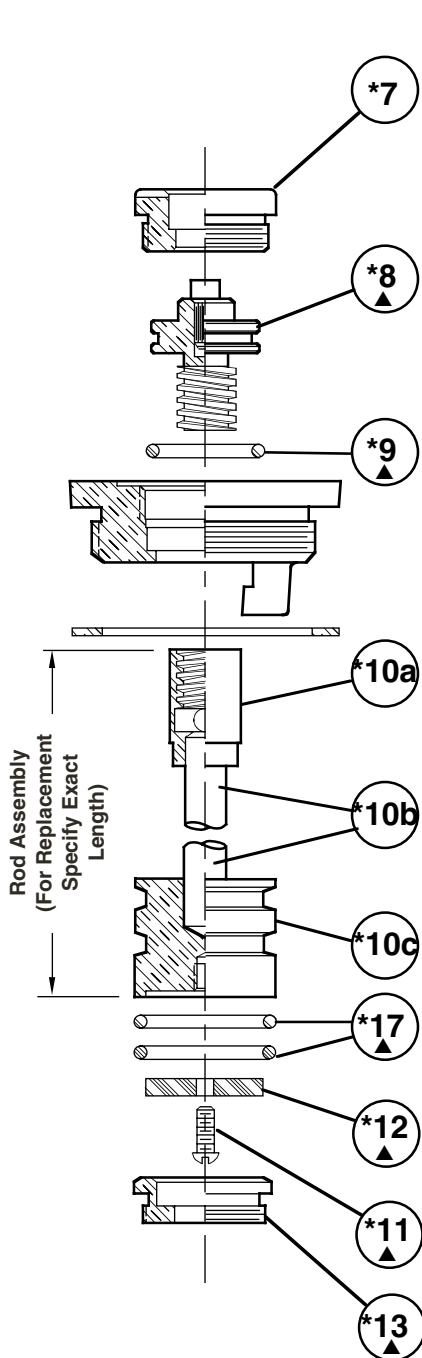
CHECKED BY:
TD

DRAWN BY:
VGD

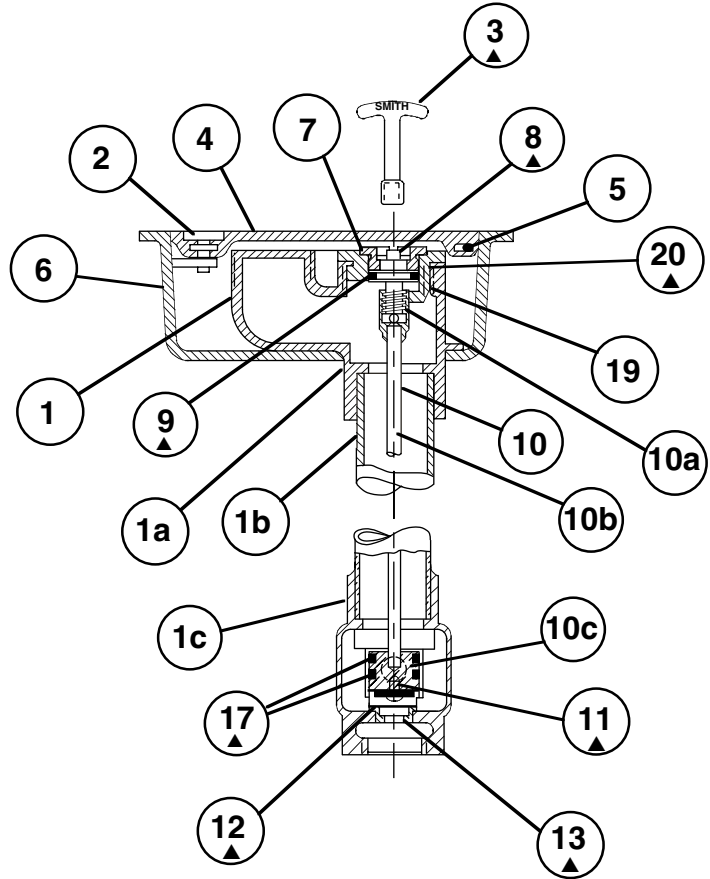
5812,5813,5814-BS-CAN

FIGURE
NUMBER

PARTS LIST WITH MAINTENANCE INSTRUCTIONS



*These parts are accessible from face of hydrant by removing facenut.



REPLACEMENT PARTS LIST - SPECIFY FIGURE NO. WHEN ORDERING

No.	DESCRIPTION	No.	DESCRIPTION
1	Head/Casing Assembly	9	Operating Screw "O" Ring
1a	Head	10	Operating Rod Assembly
1b	Casing	10a	Coupling
1c	Valve Housing	10b	Rod
2	Locking Device	10c	Plunger
3	Key	11	Washer Screw (No. 10-24)
4	Cover	12	Washer (Neoprene)
5	Hydrant Cover Hinge Pins (2)	13	Removable Seat
6	Box	17	Plunger "O" Ring
7	Face Nut	19	Face Nut Seat
8	Operating Screw	20	Face Nut Seat Gasket

▲THESE REPLACEMENT PARTS AVAILABLE IN HPRK - 5

MAINTENANCE INSTRUCTIONS

1. Shut off water supply.
2. Remove face nut.
3. Pull stem out for complete access to all working parts.
4. Check all working parts for replacement.
5. Replace complete stem assembly and face nut.

B
A

9-22-93
6-30-93

Added Note
Submittal Update

EMB
EMB

BS
BS

WEIGHT
POUNDS

VOLUME
CUBIC FEET

FIGURE NUMBER

5812,5813,5814-CAN

REV.

DATE

DESCRIPTION

BY

CKD. BY