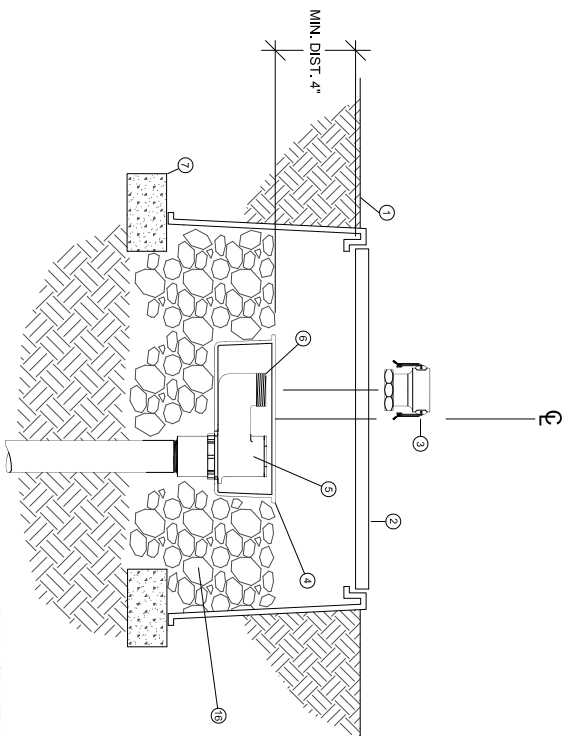
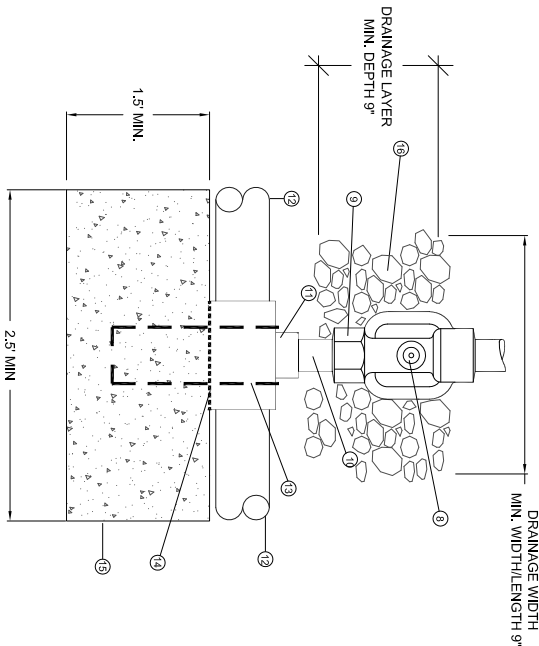
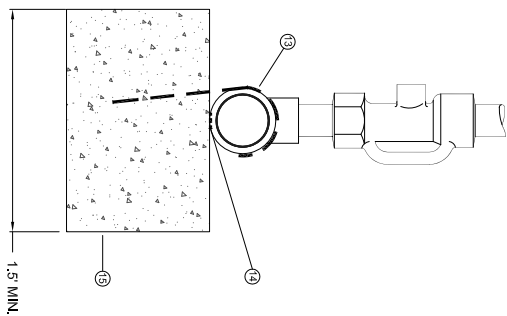


- KEYED NOTES
- 1 FINISH GRADE
 - 2 ARMOR BLACK VALVE BOX WITH BLACK COVER EXTENSIONS AS REQUIRED
 - 3 TYPE D CAMLOCK CONNECTOR (FEMALE CAM, FEMALE N.P.T.)
 - 4 HYDRANT BOX W/ HINGED LOCKING LID, SET IN GRAVEL
 - 5 GROUND HYDRANT
 - 6 2" N.I.P. MALE HOSE CONNECTION
 - 7 SUPPORT BLOCKS
 - 8 1/2" I.P.S. DRAIN PORT
 - 9 2" FEMALE I.P.S.
 - 10 SCHED. 80 PVC NIPPLE (LENGTH AS REQUIRED)
 - 11 SCHED. 80, 4" x 2" PVC TEE
 - 12 IRRIGATION MAINLINE, 48" DEPTH TYP.
 - 13 #4 REBAR OR J BOLT SNUG TO TEE
 - 14 FELT BOND-BREAK MATERIAL
 - 15 CAST-IN-PLACE CONCRETE ANCHOR BLOCK (SEE NOTE 3)
 - 16 3/4" DIAM. WASHED ROCK



- GENERAL NOTES
1. 3" MIN GRAVEL DEPTH
 2. 4" MIN CLEARANCE BETWEEN VALVE BOX LID AND HIGHEST OBJECT IN BOX.
 3. PLACE ANCHOR BLOCKS AGAINST UNDISTURBED SOIL.



1 WATER REEL WATER CONNECTION ASSEMBLY

N.T.S.

		NATIONAL CEMETERY ADMINISTRATION	
HOSE REEL CONNECTION DETAIL		INSTALL HOSE REEL CONNECTIONS	
Drawing Title Approved: Division Chief Approved: Service Director	Project Title Building Number Location LEAVENWORTH NATIONAL CEMETERY	Date 06/07/2013 Project No. 89713-10X DRAWING NO. W1 Draw 2 OF 2	