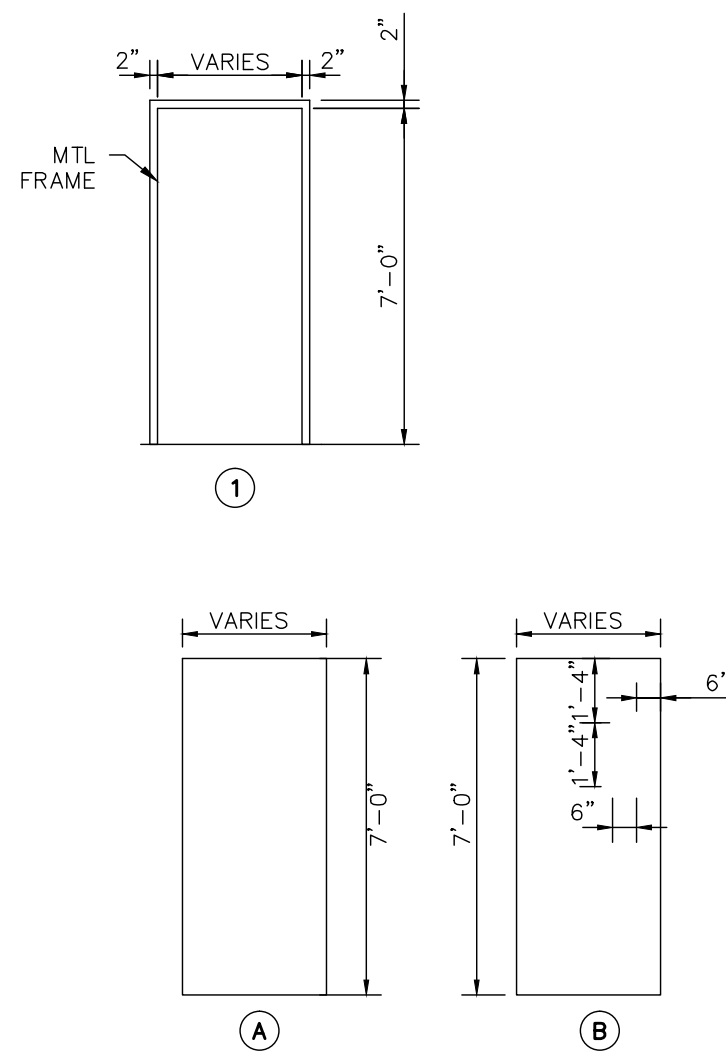


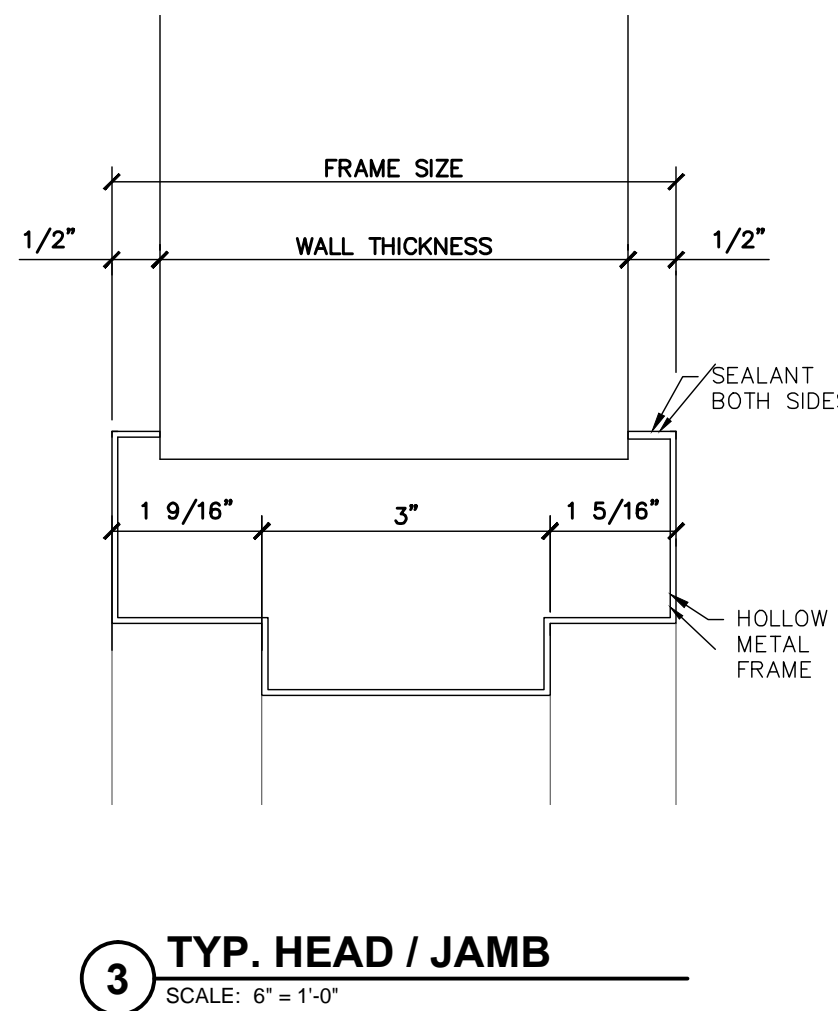
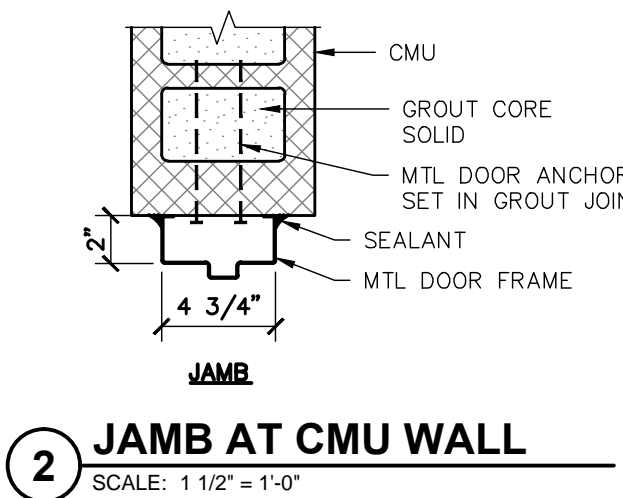
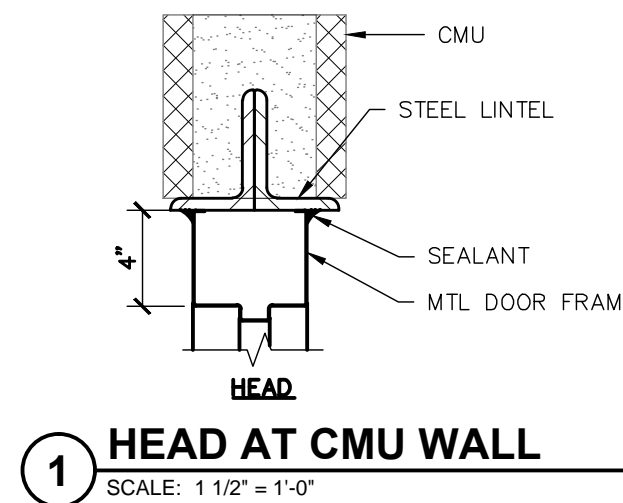
three inches = one foot  
one and one half inches = one foot  
one inch = one foot  
three quarters inch = one foot  
one half inch = one foot  
three eighths inch = one foot  
one quarter inch = one foot  
one eighth inch = one foot

DOOR SCHEDULE													
NUMBER	TYPE	MATERIAL	SIZE	THICK	FINISH	RATING	HDWR.	GLASS	FRAME TYPE	FRAME MAT.	FRAME FIN.	FRAME DET.	REMARKS
100	A	SOLID CORE WOOD	3'-0" x 7'-0"	1 3/4	STAIN	-	1		1	HM	PT	3	
101	B	SOLID CORE WOOD	3'-0" x 7'-0"	1 3/4	STAIN	-	1A	TEMP.	1	HM	PT	3	
102	A	SOLID CORE WOOD	3'-0" x 7'-0"	1 3/4	STAIN	-	3E	-	1	HM	PT	3	
103	A	SOLID CORE WOOD	3'-0" x 7'-0"	1 3/4	STAIN	-	2	-	1	HM	PT	3	
104	A	SOLID CORE WOOD	2'-6" x 7'-0"	1 3/4	STAIN	-	5D	-	1	HM	PT	3	
105	A	SOLID CORE WOOD	3'-0" x 7'-0"	1 3/4	STAIN	-	3E	-	1	HM	PT	3	
106	B	SOLID CORE WOOD	3'-0" x 7'-0"	1 3/4	STAIN	-	1	TEMP.	1	HM	PT	3	
107	A	SOLID CORE WOOD	3'-0" x 7'-0"	1 3/4	STAIN	1 HR	6	-	1	HM	PT	3	
108	A	SOLID CORE WOOD	3'-0" x 7'-0"	1 3/4	STAIN	-	3E	-	1	HM	PT	3	
109	A	SOLID CORE WOOD	2'-0" x 7'-0"	1 3/4	STAIN	-	5D	-	1	HM	PT	3	
110	A	SOLID CORE WOOD	3'-0" x 7'-0"	1 3/4	STAIN	-	3E	-	1	HM	PT	3	
111	A	SOLID CORE WOOD	3'-0" x 7'-0"	1 3/4	STAIN	-	1L	TEMP.	1	HM	PT	3	
112	A	SOLID CORE WOOD	2'-6" x 7'-0"	1 3/4	STAIN	2 HR	SH-3E	-	1	HM	PT	1, 2	SWIPE CARD
113	A	SOLID CORE WOOD	2'-6" x 7'-0"	1 3/4	STAIN	-	SH-3E	-	1	HM	PT	3	SWIPE CARD
114	A	SOLID CORE WOOD	3'-0" x 7'-0"	1 3/4	STAIN	-	3B	-	1	HM	PT	3	
114A	EXIST.(A)	EXIST. (SOLID CORE WOOD)	EXIST. (3'-0"x7'-0")	EXIST.	STAIN	EXIST.1HR	SH-3	-	EXIST.	EXIST. HM	PT	EXIST.	SWIPE CARD REFINISH EXIST. DOOR TO MATCH NEW DOORS
115	A	SOLID CORE WOOD	3'-0" x 7'-0"	1 3/4	STAIN	-	SH-3	-	1	HM	PT	3	SWIPE CARD
116	A	SOLID CORE WOOD	3'-0" x 7'-0"	1 3/4	STAIN	2 HR	SH-3	-	1	HM	PT	1, 2	SWIPE CARD, BUZZ IN, VIDEO SURVEILLANCE
117	B	SOLID CORE WOOD	3'-0" x 7'-0"	1 3/4	STAIN	2 HR	SH-3	TEMP., FIRE RATED	1	HM	PT	3	SWIPE CARD, BUZZ IN, VIDEO SURVEILLANCE
118	EXIST.(A)	EXIST. (SOLID CORE WOOD)	EXIST. (3'-0"x7'-0")	EXIST.	STAIN	EXIST.1HR	SH-3	-	EXIST.	EXIST. HM	PT	3	SWIPE CARD REFINISH EXIST. DOOR TO MATCH NEW DOORS
119	EXIST.(A)	EXIST. (SOLID CORE WOOD)	EXIST. (3'-0"x7'-0")	EXIST.	STAIN	-	3E	-	EXIST.	EXIST. HM	PT	EXIST.	REFINISH EXIST. DOOR TO MATCH NEW DOORS
120	A	METAL	3'-0" x 7'-0"	1 3/4	PAINT	1 HR	3E	-	1	HM	PT	3	SWIPE CARD, TEMPORARY DOOR
121	EXIST.(A)	EXIST. (SOLID CORE WOOD)	EXIST. (3'-0"x7'-0")	EXIST.	EXIST.	-	SH-3	-	EXIST.	EXIST. HM	EXIST.	EXIST.	SWIPE CARD



DOOR NOTES:

- ALL EXISTING DOORS TO REMAIN WILL HAVE HARDWARE REMOVED, THE DOOR LEAF SANDED AND REFINISHED TO MATCH DOOR ON PROJECT AND THE HARDWARE REINSTALLED.
- ALL DOORS ADJOINING PUBLIC CORRIDORS WILL BE PAINTED WITH THE PUBLIC CORRIDOR SIDE OF THE DOOR FRAME MATCHING THE DOOR TRIM IN THE PUBLIC CORRIDOR AND THE PROJECT SIDE OF THE DOOR FRAME MATCHING THE P-2 FINISH.
- ALL DOOR FRAMES WILL HAVE A CONTINUOUS BEAD OF SEALANT WHERE THE FRAME MEETS THE G.W.B. PARTITION.
- ALL FIRE RATED DOORS WILL BE IN ACCORDANCE WITH NFPA 257.

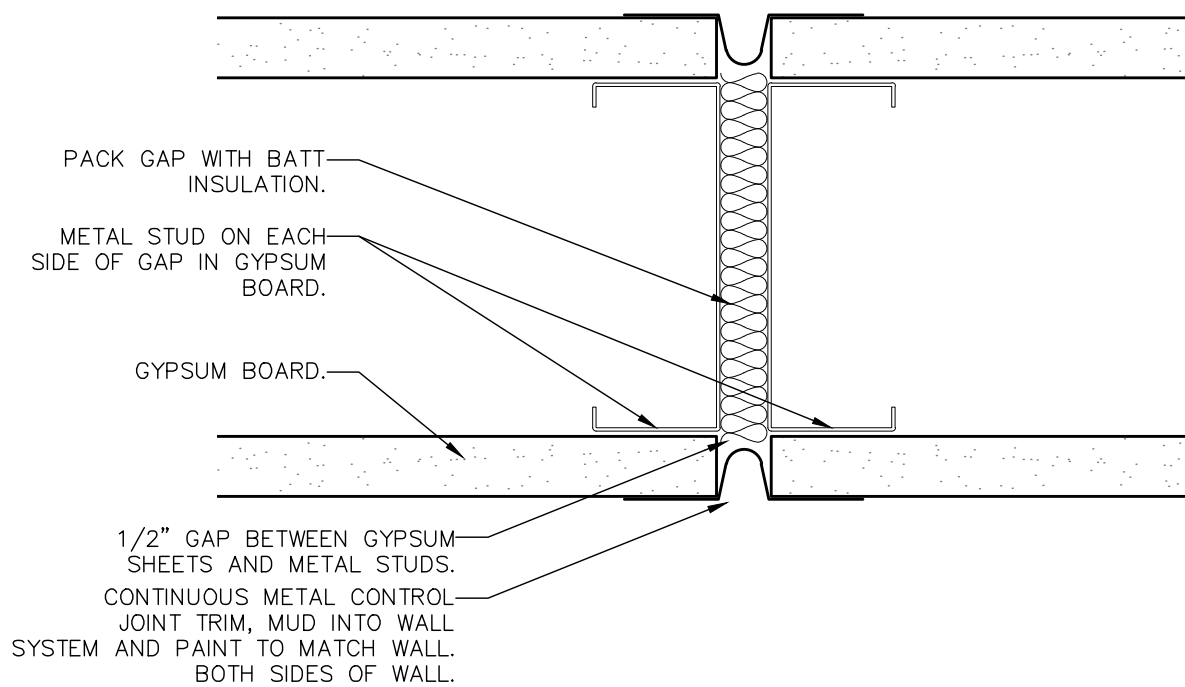


WINDOW SCHEDULE									
NUMBER	TYPE	MATERIAL	SIZE	THICK	FINISH	RATING	GLASS	HEAD & SILL TYPE	
A	FIXED	METAL PRERAME HEAT BARRIER SERIES	42" W. x 40"H.	0'-2 3/8"	CLEAR	2HR	2HR FIRE RATED BALLISTIC LEVEL III	4	WINDOW SYSTEM BY TECHNICAL GLASS PRODUCTS
B	SLIDER	HOLLOW METAL FRAME	24" W. x 40"H.	0'-0 1/4"	CLEAR	-	CLEAR TEMP. GLASS		EVERGOOD, SLIDING GLASS DISPLAY DOOR LOCK, MODEL 220
C	FIXED	HOLLOW METAL FRAME	24" W. x 40"H.	0'-0 1/4"	1 WAY MIRROR	-	1 WAY MIRROR, TEMP. IMPACT SAFETY RATED		
D	EXIST.	EXIST. (HOLLOW MTL FRAME)	EXIST.	EXIST.	EXIST.	-	EXIST.		

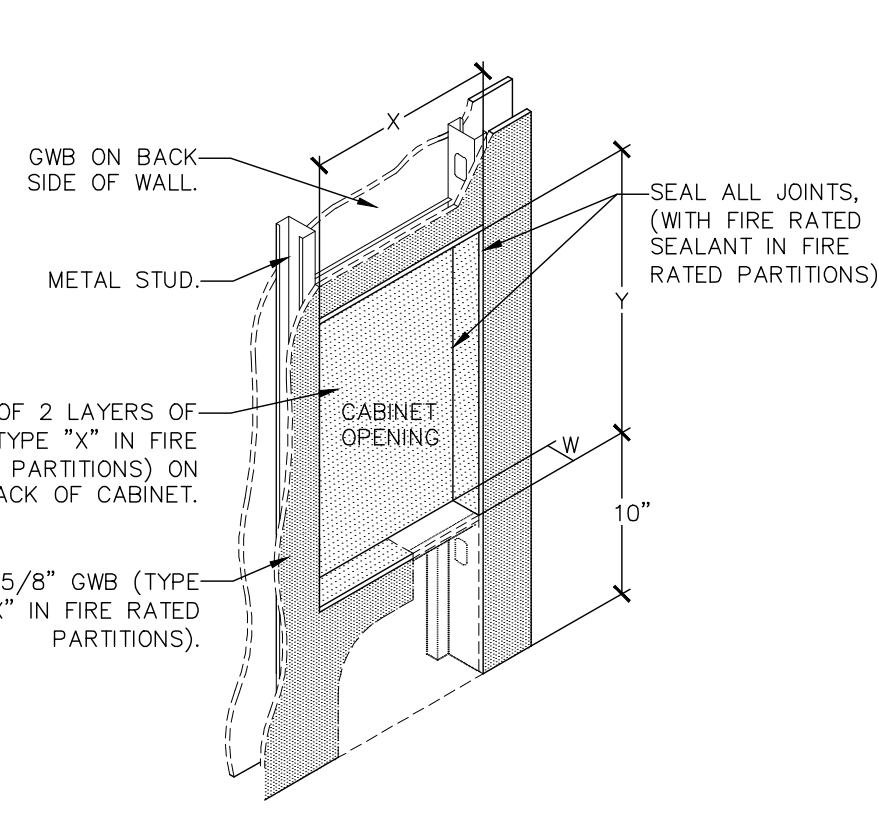
FINISH SCHEDULE															
NO.	ROOM	FLOOR	BASE	NORTH WALL		EAST WALL		SOUTH WALL		WEST WALL		CEILING			REMARKS
				MATERIAL	FINISH	MATERIAL	FINISH	MATERIAL	FINISH	MATERIAL	FINISH	MATERIAL	FINISH	HEIGHT	
A168	PIV ROOM	VCT.-1	VCT.-0	EXIST.	P-1	EXIST.	P-1	G.W.B./EXIST.	P-1	EXIST.	P-1	ACT.-1	-	7'-10"	
A168A	TRAINING OFFICER OFFICE	VCT.-1	VCT.-0	EXIST.	P-1	EXIST.	P-1	EXIST.	P-1	EXIST.	P-1	ACT.-1	-	7'-10"	
A188	LOCKERS	VCT.-1	VCT.-0	EXIST.	P-1	G.W.B./EXIST.	P-1	EXIST.	P-1	EXIST.	P-1	ACT.-1	-	7'-10"	
C108	CHIEF OFFICE	VCT.-1	VCT.-0	EXIST.	P-1	EXIST.	P-1	G.W.B.	P-1	EXIST.	P-1	ACT.-1	-	7'-10"	
C109	CLOSET	VCT.-1	VCT.-0	G.W.B.	P-1	G.W.B.	P-1	G.W.B.	P-1	G.W.B./EXIST.	P-1	ACT.-1	-	7'-10"	
C110	DEPUTY CHIEF	VCT.-1	VCT.-0	G.W.B.	P-1	G.W.B.	P-1	G.W.B.	P-1	EXIST.	P-1	ACT.-1	-	7'-10"	
C112	ROLL CALL	VCT.-1	VCT.-0	G.W.B.	P-1	G.W.B.	P-1	G.W.B.	P-3	EXIST.	P-1	ACT.-1	-	7'-10"	
C113	ARMORY	VCT.-1	VCT.-0	G.W.B.	P-1	G.W.B.	P-1	G.W.B.	P-1	G.W.B.	P-1	ACT.-1	-	7'-10"	
C114	EVIDENCE	VCT.-1	VCT.-0	G.W.B.	P-1	G.W.B.	P-1	G.W.B.	P-1	G.W.B.	P-1	ACT.-1	-	7'-10"	
C116	OPERATORS	VCT.-1	VCT.-0	G.W.B.	P-1	G.W.B.	P-1	G.W.B.	P-1/ P-3*	EXIST.	P-1	ACT.-1	-	7'-10"	*P-3 AT DIAGONAL WALL ONLY.
C118	DISPATCH ROOM	FLR.-1	VCB.-1	G.W.B.	P-1	G.W.B.	P-1	G.W.B.	P-1	EXIST.	P-1	ACT.-1	-	7'-10"	VCT OVER 2 1/2" RAISED FLOOR SYSTEM
C122	CORRIDOR	VCT.-1	VCT.-0	EXIST.	P-1	G.W.B.	P-1	G.W.B.	P-1	G.W.B.	P-1	ACT.-1	-	7'-10"	
C134	IT ROOM	EXIST.	EXIST.	EXIST.	P-1	EXIST.	P-1	EXIST.	P-1	EXIST.	P-1	NONE	NONE	OPEN	
C139	EXIST. MAIN LOBBY	*	VCB.-2	G.W.B.	P-4	-	-	-	-	-	-	-	-	EXIST.	*MATCH EXISTING FINISHES IN MAIN LOBBY.
C141	HALL	VCT.-1 /VCT.-2	VCT.-0	G.W.B.	P-1	G.W.B.	P-1/ P-3*	G.W.B.	P-1	G.W.B.	P-1	ACT.-1	-	7'-10"	*P-3 AT WALL BEHIND CASE WORK NEAR ENTRY DOOR ONLY.
C142	REST ROOM	VCT.-1	VCT.-0	G.W.B.	P-1	G.W.B.	P-1	G.W.B.	P-1	G.W.B.	P-1	ACT.-1	-	7'-10"	
C143	SHOWER ROOM	VCT.-1	VCT.-0	G.W.B.	P-1	G.W.B.	P-1	G.W.B.	P-1	G.W.B.	P-1	ACT.-1	-	7'-10"	
C144	STORAGE	VCT.-1	VCB.-1	G.W.B.	P-1	G.W.B.	P-1	G.W.B.	P-1	G.W.B.	P-1	ACT.-1	-	7'-10"	
C145	HALL	VCT.-1 /VCT.-2	VCT.-0	G.W.B./EXIST.	P-1	G.W.B./EXIST.	P-1	G.W.B.	P-1	G.W.B.	P-1	ACT.-1	-	7'-10"	
C146	INVESTIGATORS	VCT.-1	VCT.-0	G.W.B.	P-1	G.W.B.	P-1	G.W.B.	P-1	G.W.B.	P-1	ACT.-1	-	7'-10"	
C147	HOLDING	VCT.-1	VCB.-1	G.W.B.	P-1	G.W.B.	P-1	G.W.B.	P-1	G.W.B.	P-1	ACT.-1	P-6	7'-10"	
C148	OPERATIONS	VCT.-1/VC T.-2	VCT.-0	G.W.B.	P-1	G.W.B.	P-3	G.W.B./EXIST.	P-1	-	-	ACT.-1	-	7'-10"	

FINISH NOTES:

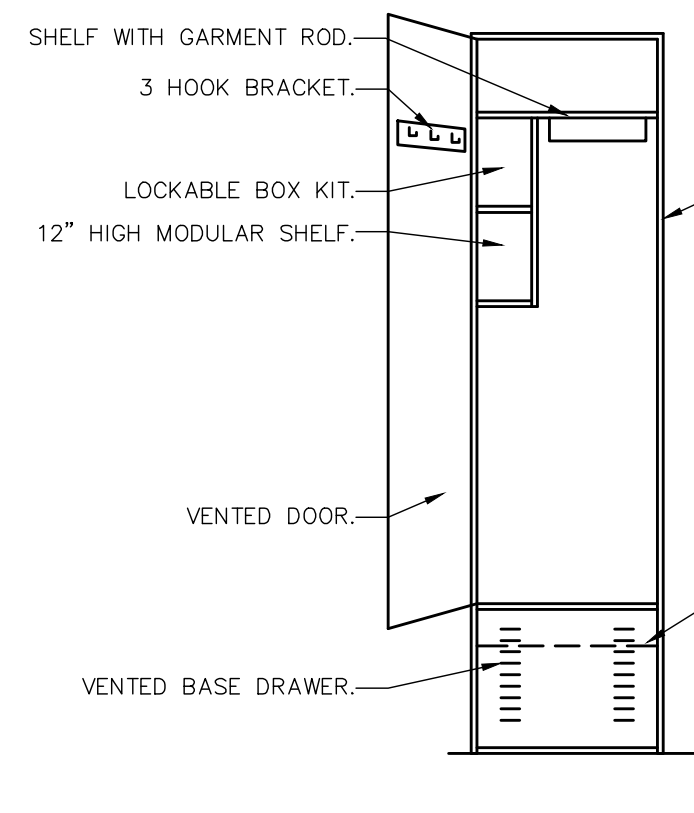
- THE CONTRACTOR SHALL FOLLOW THE MANUFACTURER'S INSTRUCTIONS AND SPECIFICATIONS FOR THE INSTALLATION OF ALL FINISH MATERIALS.
- ALL FINISHES SHALL HAVE A CLASS A FLAME SPREAD OR BETTER.
- FLOOR FINISHES SHALL BE AT A MINIMUM CLASS I.
- THE CONTRACTOR SHALL PROVIDE A RUBBER TRANSITION STRIP, THAT IS NO GREATER THAN 1/2" THICK, BETWEEN DISSIMILAR MATERIAL.
- VCT-1 FLOORING IS NOT REQUIRED IN THE AREA OF THE RAISED FLOORING SYSTEM IN THE DISPATCH ROOM.
- THE CONTRACTOR SHALL PROVIDE A RUBBER TRANSITION STRIP, THAT IS NO GREATER THAN 1/4" THICK, BETWEEN DISSIMILAR FLOORING MATERIAL.
- ALL DOORS ADJOINING PUBLIC CORRIDORS WILL BE PAINTED WITH THE PUBLIC CORRIDOR SIDE OF THE DOOR FRAME MATCHING THE DOOR TRIM IN THE PUBLIC CORRIDOR AND THE PROJECT SIDE OF THE DOOR FRAME MATCHING THE P-2 FINISH.
- MINOR ITEMS OF WORK SUCH AS CUTTING, BLOCKING, TRIMMING, ETC. WILL BE PERFORMED AS REQUIRED TO MAKE THE FINISH WORK COMPLETE WHETHER SHOWN OR NOTED ON THE CONTRACT DOCUMENTS OR NOT.
- FLOOD COAT ALL FLOORS IN ALL PROJECT AREAS WITH CEMENTITIOUS FLOOD COAT MATERIAL AS DIRECTED IN THE FLOORING SPECIFICATION.
- THE CONTRACTOR WILL COORDINATE THE EQUIPMENT, FURNITURE, AND UTILITY REQUIREMENT WITH THE RAISED FLOORING MANUFACTURE SO THE RAISED FLOORING MANUFACTURE CAN PROVIDE SHOP DRAWING LAYOUT PLANS OF THE RAISED FLOOR SYSTEM FOR REVIEW BY THE VA COR.



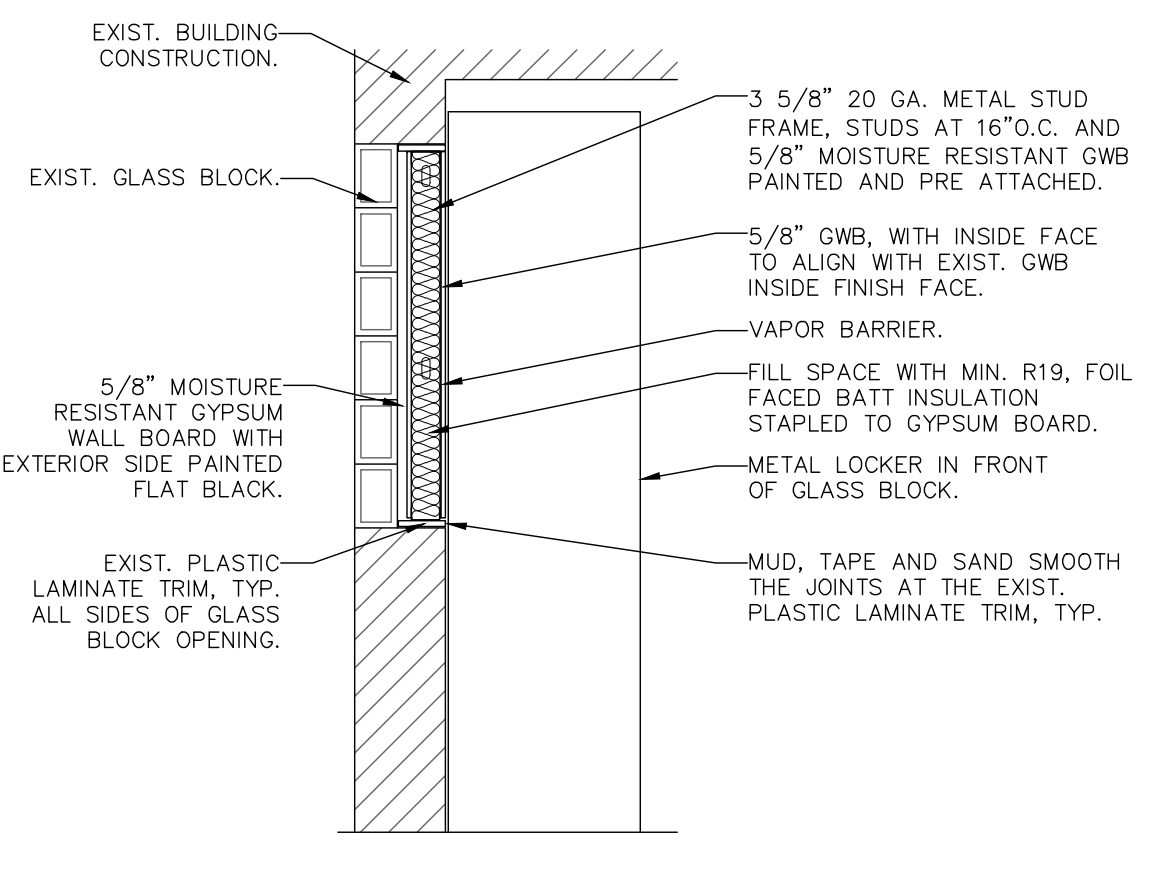
6 TYPICAL GWB EXPANSION JOINT  
SCALE: 6" = 1'-0"



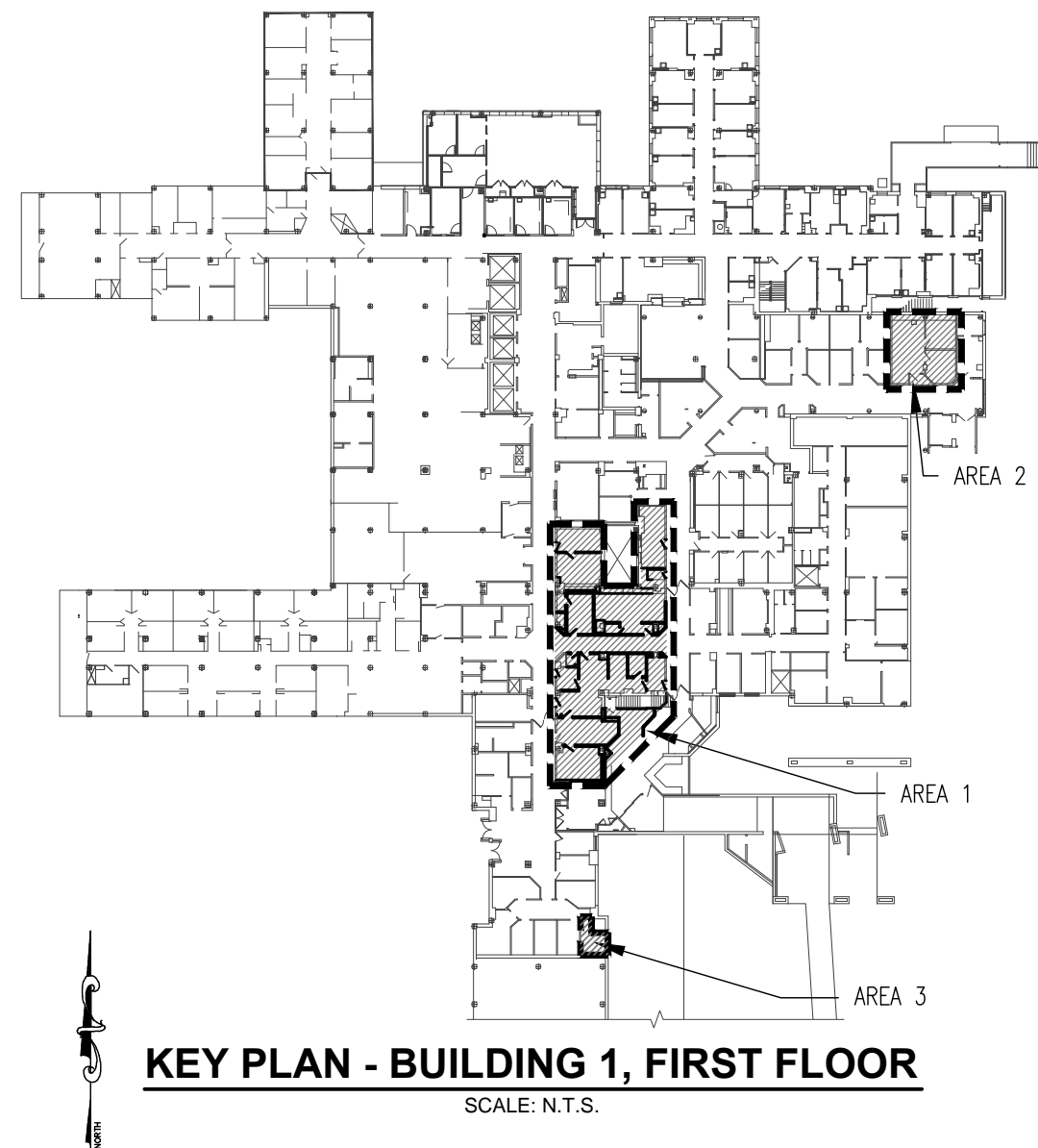
7 FIRE EXTINGUISHER RECESS  
SCALE: N.T.S.  
NOTE: COORDINATE DIM. W, X AND Y WITH SELECTED CABINET.



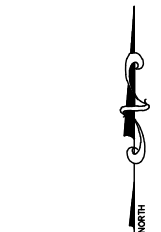
8 TYP. POLICE LOCKER  
SCALE: N.T.S.



9 LOCKER BACKING AT GLASS BLOCK  
SCALE: N.T.S.



KEY PLAN - BUILDING 1, FIRST FLOOR  
SCALE: N.T.S.



-	-
FIN / MAT. SCHEDULE CTOP-1 THICKNESS 4/A7 SILL THICK.	2018/8/7
8/A7 LOCKER HEIGHT, 9/A7 INFL. AT GLASS BLOCK	2018/7/31
FINISH / MATERIAL SCHEDULE, CW-2 MODEL EDIT	2018/7/26
100% DESIGN SUBMISSION	2013/4/19
90% DESIGN SUBMISSION	2013/3/18
60% DESIGN SUBMISSION	2012/11/26
30% DESIGN SUBMISSION	2012/10/18
Revisions	Date

CONSULTANTS:

 **Engineering and Land Surveying, P.C.**  
1533 Crescent Road - Clifton Park, NY 12065

SEAL:



ARCHITECT/ENGINEERS:

 **Sigma Psi Consulting**  
Mechanical, Electrical, Plumbing Engineers, PLLC  
4 Collamer Road, Malta, NY 12020 PH (518) 581-9428 FX (518) 580-9325

Drawing Title  
**DOOR SCHEDULE,  
ROOM SCHEDULE  
AND DETAILS**

Approved Project Director  
-  
-  
-

Project Title  
**SYRACUSE VAMC  
RENOVATE POLICE STATION**

Location  
**SYRACUSE VA MEDICAL CENTER NY**

Date  
**4/19/13**

Checked  
**CMD**

Drawn  
**MM**

Project Number  
**528A7-12-708**

Building Number  
**BLDG. 1**

Drawing Number  
**A-7**

Dwg. 10 of 31

Office of  
Construction  
and Facilities  
Management

 Department of  
Veterans Affairs