



PK Electrical, Inc.

681 Sierra Flow Dr., Ste. B
Reno, Nevada 89511
P: 775.826.9015
F: 775.826.9030
pkelctrical.com

VA Reno CLC Electrical Closet
VA Transaction #654-13-3-6035-0229
975 Kirman Avenue
Reno, Nevada 89502

REVISIONS

SHEET TITLE

ELECTRICAL LEGEND,
PANEL SCHEDULES &
DRAWING SCHEDULE

DRAWN: MSP
CHECKED: KDP
DATE: 5/20/13
JOB NUMBER: 13044
PROJECT NAME: MSP

E0.1

20-May-13		PANEL: (N)PBCR1A					LOCATION: ELECT. RM 1044					
TYPE	DESCRIPTION	LOAD	BKR	CIR	A	B	C	CIR	BKR	LOAD	DESCRIPTION	TYPE
E	IT RACKS	1500	20	3	1680			2	20	180	1044	R
E	IT RACKS	1500	20	3		1730		4	20	230	1002,1044,1046	L
E	IT RACKS	1500	20	5			1500	6	20		SPARE	
R	IT ROOM WALLS	720	20	7	720			8	20		SPARE	
R	IT ROOM WALLS	720	20	9		720		10	20		SPARE	
	SPARE		20	11			0	12	20		SPARE	
	SPARE		20	13	0			14	20		SPARE	
	SPARE		20	15		0		16	20		SPARE	
	SPARE		20	17			0	18	20		SPARE	
	SPARE		20	19	0			20	20		BUSSED SPACE	
	BUSSED SPACE		20	21		0		22			BUSSED SPACE	
	BUSSED SPACE		20	23			0	24			BUSSED SPACE	
	BUSSED SPACE		20	25	0			26			BUSSED SPACE	
	BUSSED SPACE		20	27		0		28			BUSSED SPACE	
	BUSSED SPACE		20	29			0	30			BUSSED SPACE	
			31	0				32				
			33					34				
			35				0	36				
			37	0				38				
			39		0			40				
			41					42				
					2400	2450	1500					
COPPER BUS SIZE:		125	GROUND:				STANDARD		NOTES:			
VOLTAGE:		208	MOUNTING:				SURFACE					
PHASE:		3	ENCLOSURE:				NEMA 1					
WIRE:		4	# OF 1-POLE CIRCUITS				30					
LUGS:		MLO	CONNECTED KVA:				6.4					
BREAKER AIC RATING:		22K	CONNECTED AMPS:				17.6					
NEUTRAL:		100%	NET KVA:				6.4		CRITICAL BRANCH			
FEEDER OCPD SIZE:		125	NET AMPS:				17.6		© 2008-2011 PX ELECTRICAL, INC			

20-May-13		PANEL: (N)PBLS1A				LOCATION: ELECT. RM 1044							
TYPE	DESCRIPTION	LOAD	BKR	CIR	A	B	C	CIR	BKR	LOAD	DESCRIPTION	TYPE	
L	[1]EIEGRESS LTG EMS-1	800	20	1	2400			2	20	1600	[1]ETUNNEL EMS-8	L	
L	[1]EIEGRESS LTG EMS-3	800	20	3		2300		4	20	1500	[1]EIAUTO DOOR EMS-10	E	
L	[1]EIEGRESS LTG EMS-5	800	20	5			2300	6	20	1500	[1]EIDDOOR AIR COMP EMS-	E	
L	[1]EIEGRESS LTG EMS-17	800	20	7	1100			8	20	300	[2]HALL EGRESS	L	
	SPARE		20	9		138		10	20	138	ELEV EQUIP RM 1046	L	
E	FIRE ALARM BOOSTER	600	20	11			600	12	20		SPARE	L	
E	AUTO DOORS	500	20	13	617			14	20	117	[2]1047 GTYD EGRESS	L	
E	FS DAMPERS	160	20	15		252		16	20	92	TEMP. CORRIDOR EGRESS	L	
E	SECURITY PANELS	800	20	17			1800	18	20	800	WANDERING PATIENT SYS	E	
E	SECURITY PANELS	800	20	19	1600			20	20	800	WANDERING PATIENT SYS	E	
	SPARE		20	21		1600		22	20	1600	CRASH CARTS	E	
	SPARE		20	23			0	24	20		SPARE		
	SPARE		20	25	0			26	20		SPARE		
	SPARE		20	27		0		28	20		SPARE		
	SPARE		20	29			0	30	20		SPARE		
	BUSSED SPACE		31	0				32			BUSSED SPACE		
	BUSSED SPACE		33	0				34			BUSSED SPACE		
	BUSSED SPACE		35				0	36			BUSSED SPACE		
	BUSSED SPACE		37	0				38			BUSSED SPACE		
	BUSSED SPACE		39				0	40			BUSSED SPACE		
	BUSSED SPACE		41					42			BUSSED SPACE		
					5717	4290	4500						
COPPER BUS SIZE:					125	GROUND:					NOTES:		
VOLTAGE:					208	MOUNTING:					[1] ORIG CKTS TO PNL EMS -		
PHASE:					3	ENCLOSURE:					VERIFY IN FIELD.		
WIRE:					4	# OF 1-POLE CIRCUITS					[2] VIA LCP-1		
LUGS:					MLO	CONNECTED KVA:					14.5		
BREAKER AIC RATING:					22K	CONNECTED AMPS:					40.3		
NEUTRAL:					100%	NET KVA:					14.5		
FEEDER OCPD SIZE:					125	NET AMPS:					40.3		
											© 2008-2011 PE ELECTRICAL, INC		

20-May-13		PANEL: (N)PB1C				LOCATION: ELECT RM 1044						
TYPE	DESCRIPTION	LOAD	BKR	CIR	A	B	C	CIR	BKR	LOAD	DESCRIPTION	TYPE
L	[1] (E) LIGHTING CKT PS-2	1200	20	1	1560			2	20	360	IT ROOM	E
L	[1] (E) LIGHTING CKT PS-4	1200	20	3		1560		4	20	360	IT ROOM	E
L	[1] (E) LIGHTING CKT PS-6	1200	20	5			1740	6	20	540	1041,1041,1045	R
L	[1] (E) LIGHTING CKT PS-7	1200	20	7	1920			8	20	720	1047	R
L	[1] (E) LIGHTING CKT PS-9	1200	20	9		2000		10	20	800	1047 WATER FEATURE	E
L	[1] (E) LIGHTING CKT PS-11	1200	20	11			1740	12	20	540	1037-1039	R
R	[1] (E) RECEPTS CKT PS-24	1200	20	13	1380			14	20	180	HALL	R
R	[1] (E) RECEPTS CKT PS-26	1200	20	15		1695		16	20	495	[2]HALL	L
R	[1] (E) RECEPTS CKT PS-28	1200	20	17			1536	18	20	336	N. ROOMS	L
R	[1] (E) RECEPTS CKT PS-27	1200	20	19	1430			20	20	230	[2]CTYD 1047-48 WALL	L
R	[1] (E) RECEPTS CKT PS-29	1200	20	21		1220		22	20	20	[2]COURTYARD 1047 TREES	L
R	[1] (E) RECEPTS CKT PS-40	1200	20	23			1476	24	20	276	TEMP. CORRIDOR	L
R	[1] (E) RECEPTS CKT PS-31	1200	20	25	2280			26	20	1080	1043 PLUGMOLD	L
R	[1] (E) RECEPTS CKT PS-33	1200	20	27		2280		28	20	1080	1043 PLUGMOLD	R
R	[1] (E) RECEPTS CKT PS-35	1200	20	29			2280	30	20	1080	1043 PLUGMOLD	R
R	[1] (E) RECEPTS CKT PS-16	1200	20	31	1200			32	20		SPARE	
R	[1] (E) RECEPTS CKT PS-38	1200	20	33		1200		34	20		SPARE	
L	[1] (E) LIGHTING CKT PS-39	1200	20	35			1200	36	20		SPARE	
L	[1] (E) LIGHTING CKT PS-37	1200	20	37	1200			38	20		SPARE	
	SPARE		20	39		0		40	20		SPARE	
	SPARE		20	41				42	20		SPARE	
					10970	9955		9972				
COPPER BUS SIZE:		400	GROUND:				STANDARD		NOTES:			
VOLTAGE:		208	MOUNTING:				SURFACE		*HORIZONTAL CKTS FROM PNL PS VERIFY (E) CKTS IN FIELD.			
PHASE:		3	ENCLOSURE:				NEMA 1		ADDITIONAL LOADS MAY BE			
WIRE:		4	# OF 1-POLE CIRCUITS				42		ADDED TO PANEL, CONFIRM (E)			
LUGS:		MLO/FEED THRU	CONNECTED KVA:				30.9		LOADS, [2] VIA LCP-1.			
BREAKER AIC RATING:		22K	CONNECTED AMPS:				85.8		NORMAL POWER			
NEUTRAL:		100%	NET KVA:				26.7					
FEEDER OCPD SIZE:		400	NET AMPS:				74.1		© 2008-2011 PE ELECTRICAL, INC			

DRAWING SCHEDULE

SHEET	DESCRIPTION	
E0.1	ELECTRICAL LEGEND, PANEL SCHEDULES & DRAWING SCHEDULE	●
E1.1	PARTIAL NEW WORK ELECTRICAL PLAN	●
E2.1	ONLINE DIAGRAM	●
TOTAL SHEETS IN ISSUE:		3

ELECTRICAL LEGEND		AUGUST 2011	
	PANELBOARD: SURFACE MOUNTED		GROUND FAULT INTERRUPTER DEVICE
	PANELBOARD: FLUSH MOUNTED		METERING DEVICE
	SWITCHBOARD OR DISTRIBUTION PANEL		REMOTE METER
	TRANSFORMER		SHUNT TRIP DEVICE
	FULLBOX / VAULT		TRANSFORMER
	MOTOR STARTER		CURRENT TRANSFORMER
	COMBINATION MOTOR STARTER		GENERATOR
	COMBINATION MOTOR STARTER PROVIDED BY OTHERS		MOTOR - # INDICATES HP
	DISCONNECT SWITCH - FUSIBLE (FUSED PER EQUIP. NAMEPLATE)		INTERRUPTER SWITCH
	DISCONNECT SWITCH - NON-FUSIBLE		GROUND FAULT RELAY W/ CT OR SENSOR
	DISCONNECT SWITCH PROVIDED BY OTHERS		FUSE
	VARIABLE FREQUENCY DRIVE		CIRCUIT BREAKER
	ENCLOSED CIRCUIT BREAKER		DRAWOUT CIRCUIT BREAKER
	GROUND ROD		TRANSFER SWITCH (A=AUTOMATIC, M=MANUAL) # FOR POLES 2, 3 OR 4
	SHUNT TRIP STATION OR EMERGENCY PUSHBUTTON		SURGE PROTECTION DEVICE
	REMOTE METER		THERMOSTAT (PROVIDED BY MECH. CONTRACTOR UNO)
	JUNCTION BOX (SIZE AS REQUIRED UNO)		SHEET NOTE DESIGNATION
	FIXTURE DESIGNATION: F1=TYPE (SEE FIXTURE SCH.)		REVISION DELTA: NUMBER REPRESENTS REVISION
	FEEDER DESIGNATION		EQUIPMENT CONNECTION
	CONDUIT/RACEWAY IN WALL OR ABOVE CEILING		CONDUIT/RACEWAY BELOW GRADE OR BELOW FLOOR
	CONDUIT/RACEWAY UP		CONDUIT/RACEWAY DOWN
	BREAK OR RUN CONTINUES		OVERHEAD SERVICE
	PRIMARY		SECONDARY
	COMMUNICATIONS OR SIGNAL		TELEPHONE
	TELEVISION		LOW VOLTAGE AND/OR CONTROL WIRING
	EMERGENCY CIRCUIT		CONDUIT/RACEWAY STUB OUT: MARK AND CAP (SITE)
	CONDUIT/RACEWAY SLEEVE		TICS = NO. OF #12 WIRES (UNO) IF MORE THAN TWO WITHIN RACEWAY. GROUNDING CONDUCTOR (NOT SHOWN) ALWAYS REQUIRED.
	ISOLATED GROUNDING CONDUCTOR (PHASE CONDUCTOR/S)		BRANCH CIRCUIT (WHEN TIC MARKS ARE NOT SHOWN) = (1) PHASE, (1) NEUTRAL AND (1) GROUNDING CONDUCTOR
	HOMERUN TO PANELBOARD OR DEVICE		HOMERUN CIRCUIT DESIGNATION
	GROUNDING CONDUCTOR (NEUTRAL CONDUCTOR (N=1, 2N=2 NEUTRALS, 3N=3 NEUTRALS) PHASE CONDUCTOR/S) PANELBOARD DESIGNATION		HOMERUN CIRCUIT DESIGNATION (3 PHASE CIRCUIT SHOWN)
	GROUNDING CONDUCTOR (PHASE CONDUCTOR/S) PANELBOARD DESIGNATION		NORMALLY OPEN (NO) CONTACT
	NORMALLY CLOSED (NC) CONTACT		COIL - VOLTAGE PER CONTROL DIAGRAMS
	PILOT LIGHT (LED) PUSH-TO-TEST: LETTER INDICATES COLOR (R=RED, G=GREEN, A=AMBER, Y=YELLOW)		PILOT LIGHT (LED) NON PUSH-TO-TEST
	THERMAL OVERLOAD		MAGNETIC OVERLOAD
	PUSH BUTTON NORMALLY OPEN (NO)		PUSH BUTTON NORMALLY CLOSED (NC)
	HAND-OFF-AUTO (HOA) SELECTOR SWITCH		LIMIT SWITCH NORMALLY OPEN (NO)
	LIMIT SWITCH NORMALLY CLOSED (NC)		PUSH BUTTON ILLUMINATED (LED)
	SINGLE POLE SWITCH 48" AFF (UNO)		THREE WAY SWITCH 48" AFF (UNO)
	FOUR WAY SWITCH 48" AFF (UNO)		KEY OPERATED SWITCH 48" AFF (UNO)
	SWITCH WITH LIGHTED HANDLE		MANUAL MOTOR STARTER
	SWITCH WITH PILOT LIGHT 48" AFF (UNO)		TIME WALL SWITCH 48" AFF (UNO)
	DIMMER OPERATED SWITCH 48" AFF (UNO)		OCCUPANCY SENSOR - WALL MOUNTED 48" AFF (UNO)
	OCCUPANCY SENSOR - CEILING MOUNTED. ARROWS INDICATE COVERAGE DIRECTION. PATTERN PROVIDE WITH POWER PACK PER MFG REQUIREMENTS.		CONTROL STATION
	CONTACTOR OR RELAY		PHOTOELECTRIC CELL (ON ROOF FACING NORTH UNO)
	TIMECLOCK		
NOTE: THIS IS A MASTER SYMBOL LIST. IT MAY BE THAT NOT ALL SYMBOLS SHOWN ARE USED WITHIN THIS SET OF PLANS. HEIGHTS GIVEN ARE TO CENTER LINE OF DEVICE.		20	SINGLE POLE CIRCUIT BREAKER
		20/2	TWO POLE CIRCUIT BREAKER
		20/3	THREE POLE CIRCUIT BREAKER
		20A	ARC FAULT CIRCUIT BREAKER
		20C	CONTROLLABLE CIRCUIT BREAKER
		20G	GFI CIRCUIT BREAKER
		L	L = LIGHTING
		R	R = RECEPTACLES
		E	E = EQUIPMENT
		M	M = MOTOR
		M1	M1 = LARGEST MOTOR
		K	K = KITCHEN EQUIP
		H	H = ELECTRICAL HEAT

044TYPE

044TYPE

044TYPE

044TYPE

044TYPE

044TYPE

044TYPE

044TYPE

044TYPE

044TYPE

044TYPE

044TYPE

044TYPE

044TYPE

044TYPE

044TYPE

044TYPE

044TYPE

044TYPE

044TYPE

044TYPE

044TYPE

044TYPE

044TYPE

044TYPE

044TYPE

044TYPE

044TYPE

044TYPE

044TYPE

044TYPE

044TYPE

044TYPE

044TYPE

044TYPE

044TYPE

044TYPE

044TYPE

044TYPE

044TYPE

044TYPE

044TYPE

044TYPE

044TYPE

044TYPE

044TYPE

044TYPE

044TYPE

044TYPE

044TYPE

044TYPE

044TYPE

044TYPE

044TYPE

044TYPE

044TYPE

044TYPE

044TYPE

044TYPE

044TYPE

044TYPE

044TYPE

044TYPE

044TYPE

044TYPE

044TYPE

044TYPE

044TYPE

044TYPE

044TYPE

044TYPE

044TYPE

044TYPE

044TYPE

044TYPE

044TYPE

044TYPE

044TYPE

044TYPE

044TYPE

044TYPE

044TYPE

044TYPE

044TYPE

044TYPE

044TYPE

044TYPE

044TYPE

044TYPE

044TYPE

044TYPE

044TYPE

044TYPE

044TYPE

044TYPE

044TYPE

044TYPE

044TYPE

044TYPE

044TYPE

044TYPE

044TYPE

044TYPE

044TYPE

044TYPE

044TYPE

044TYPE

044TYPE

044TYPE

044TYPE

044TYPE

044TYPE

044TYPE

044TYPE

044TYPE

044TYPE

044TYPE

044TYPE

044TYPE

044TYPE

044TYPE

044TYPE

044TYPE

044TYPE

044TYPE

044TYPE

044TYPE

044TYPE

044TYPE

044TYPE

044TYPE

044TYPE

044TYPE

044TYPE

044TYPE

044TYPE

044TYPE

044TYPE

044TYPE

044TYPE

044TYPE

044TYPE

044TYPE

044TYPE

044TYPE

044TYPE

044TYPE

044TYPE

044TYPE

044TYPE

044TYPE

044TYPE

044TYPE

044TYPE

044TYPE

044TYPE

044TYPE

044TYPE

044TYPE

044TYPE

044TYPE

044TYPE

044TYPE

044TYPE

044TYPE

044TYPE

044TYPE

044TYPE

044TYPE

044TYPE

044TYPE

044TYPE

044TYPE

044TYPE

044TYPE

044TYPE

044TYPE

044TYPE

044TYPE

044TYPE

044TYPE

044TYPE

044TYPE

044TYPE

044TYPE

044TYPE

044TYPE

044TYPE

044TYPE

044TYPE

044TYPE

044TYPE

044TYPE

044TYPE

044TYPE

044TYPE

044TYPE

044TYPE

044TYPE

044TYPE

044TYPE

044TYPE

044TYPE

044TYPE

044TYPE

044TYPE

044TYPE

044TYPE

044TYPE

044TYPE

044TYPE

044TYPE

044TYPE

044TYPE

044TYPE

044TYPE

044TYPE

044TYPE

044TYPE

044TYPE

044TYPE

044TYPE

044TYPE

044TYPE

044TYPE

044TYPE

044TYPE

044TYPE

044TYPE

044TYPE

044TYPE

044TYPE

044TYPE

044TYPE

044TYPE

044TYPE

044TYPE

044TYPE

044TYPE

044TYPE

044TYPE

044TYPE

044TYPE

044TYPE

044TYPE

044TYPE

044TYPE

044TYPE

044TYPE

044TYPE

044TYPE

044TYPE

044TYPE

044TYPE

044TYPE

044TYPE

044TYPE

044TYPE

044TYPE

044TYPE

044TYPE

044TYPE

044TYPE

044TYPE

044TYPE

044TYPE

044TYPE

044TYPE

044TYPE

044TYPE

044TYPE

044TYPE

044TYPE

044TYPE

044TYPE

044TYPE

044TYPE

044TYPE

044TYPE

044TYPE

044TYPE

044TYPE

044TYPE

044TYPE

044TYPE

044TYPE

044TYPE

044TYPE

044TYPE

044TYPE

044TYPE

044TYPE

044TYPE

044TYPE

044TYPE

044TYPE

044TYPE

044TYPE

044TYPE

044TYPE

044TYPE

044TYPE

044TYPE

044TYPE

044TYPE

044TYPE

044TYPE

044TYPE

044TYPE

044TYPE

044TYPE

044TYPE

044TYPE

044TYPE

044TYPE

044TYPE

044TYPE

044TYPE

044TYPE

044TYPE

044TYPE

044TYPE

044TYPE

044TYPE



Sierra Rose Dr., Ste. B
 Reno, Nevada 89511
 775.826.9010
 775.826.9030
 electrical.com



I. CONTRACTOR SHALL VERIFY EXISTING CIRCUIT TO REMAIN IN FILED. RECONNECT AS REQUIRED TO NEW PANELS FBK (NORMAL POWER), FBLSIA (LIFE SAFETY BRANCH) AND FBORIA (CRITICAL BRANCH).

① (E) PANELBOARDS AND ELECTRICAL ROOM SHALL BE DEMO'D BY CONTRACTOR OF CLC PROJECT.

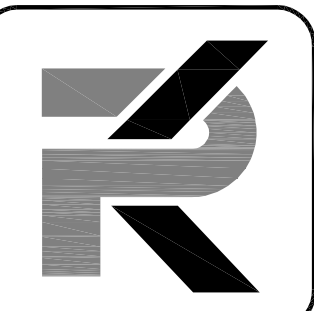
REVISIONS

SHEET TITLE

PARTIAL NEW WORK ELECTRICAL PLAN

NAME:	MSP
CHECKED:	KDP
DATE:	5/20/13
ISSUE NUMBER:	13044
PROJECT MGR:	MSP

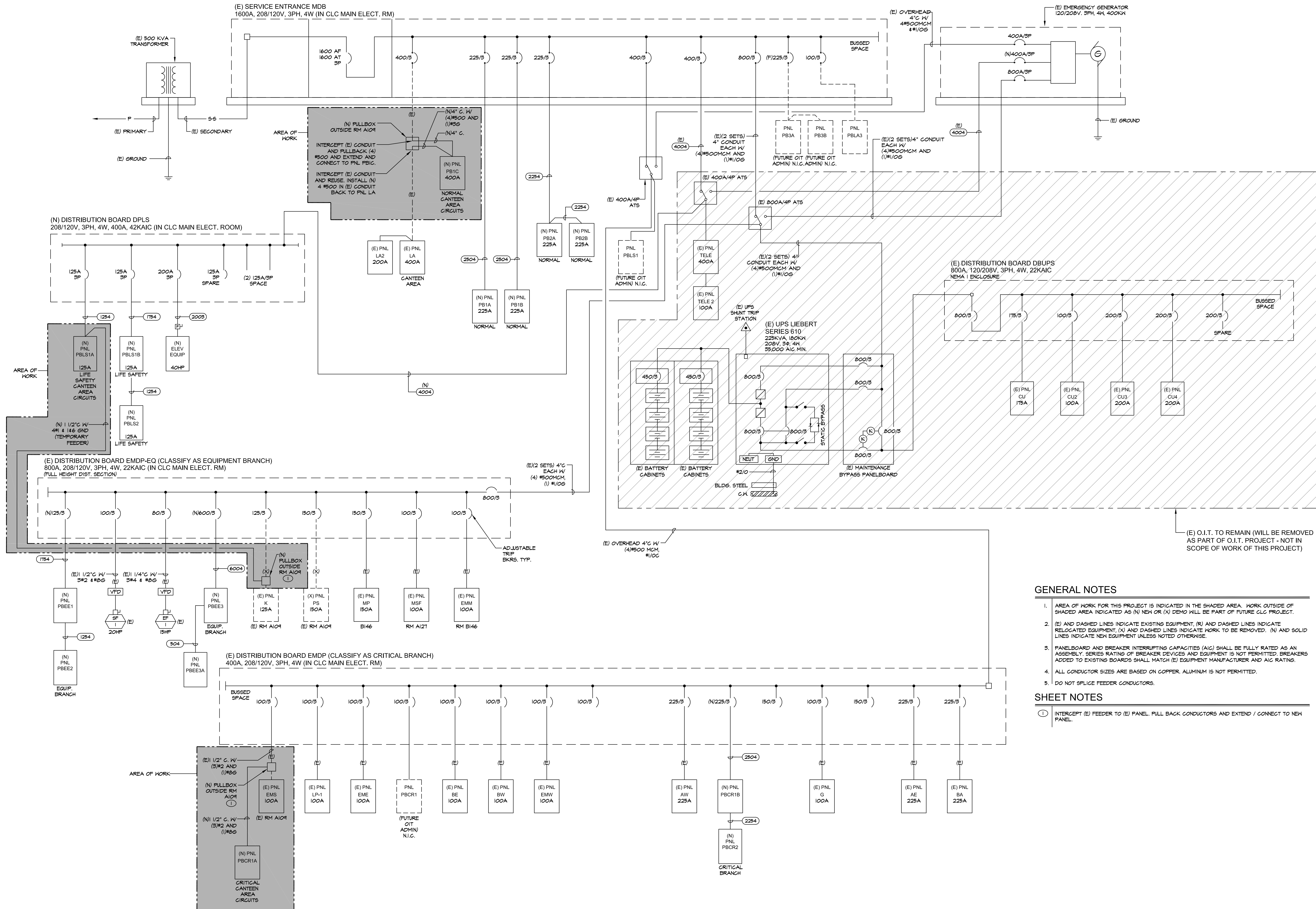
E1.1



PK Electrical, Inc.

681 Sierra Blvd. Dr. Ste. B
Reno, Nevada 89511
P: 775.826.9015
F: 775.826.9030
pkelctrcal.com

VA Reno CLC Electrical Closet
VA Transaction #654-13-3-6035-0229
975 Kirman Avenue
Reno, Nevada 89502



GENERAL NOTES

1. AREA OF WORK FOR THIS PROJECT IS INDICATED IN THE SHADED AREA. WORK OUTSIDE OF SHADED AREA INDICATED AS (N) NEW OR (X) DEMO WILL BE PART OF FUTURE CLC PROJECT.
2. (E) AND DASHED LINES INDICATE EXISTING EQUIPMENT, (R) AND DASHED LINES INDICATE RELOCATED EQUIPMENT, (X) AND DASHED LINES INDICATE WORK TO BE REMOVED. (N) AND SOLID LINES INDICATE NEW EQUIPMENT UNLESS NOTED OTHERWISE.
3. PANELBOARD AND BREAKER INTERRUPTING CAPACITIES (AIC) SHALL BE FULLY RATED AS AN ASSEMBLY. SERIES RATINGS OF BREAKER DEVICES AND EQUIPMENT IS NOT PERMITTED. BREAKERS ADDED TO EXISTING BOARDS SHALL MATCH (E) EQUIPMENT MANUFACTURER AND AIC RATING.
4. ALL CONDUCTOR SIZES ARE BASED ON COPPER. ALUMINUM IS NOT PERMITTED.
5. DO NOT SPLICE FEEDER CONDUCTORS.

SHEET NOTES

1. INTERCEPT (E) FEEDER TO (E) PANEL. PULL BACK CONDUCTORS AND EXTEND / CONNECT TO NEW PANEL.

REVISIONS

SHEET TITLE

ONLINE DIAGRAM

DRAWN: MSP
CHECKED: KDP
DATE: 5/20/13
JOB NUMBER: 13044
PROJECT MGR: MSP

E2.1