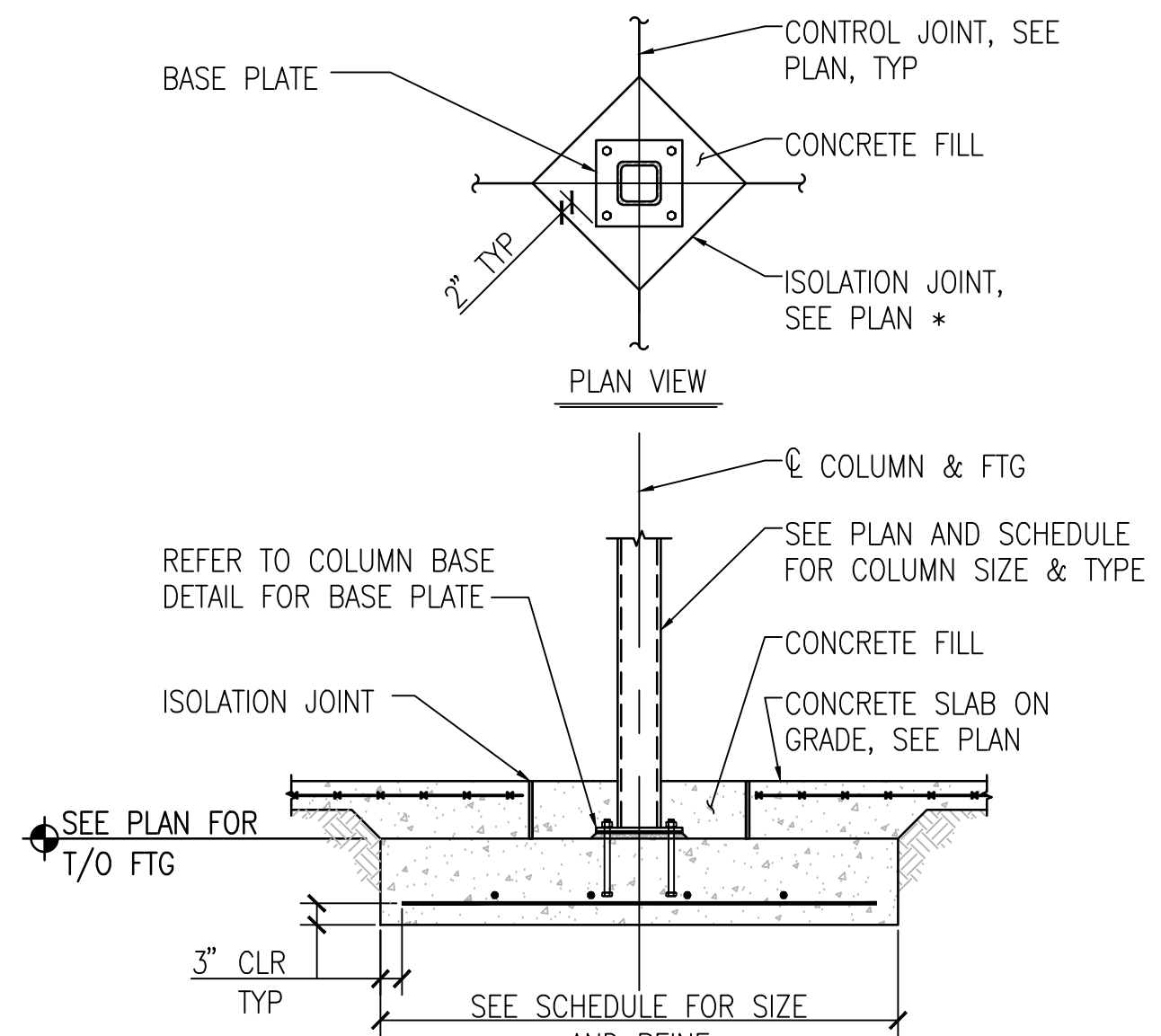
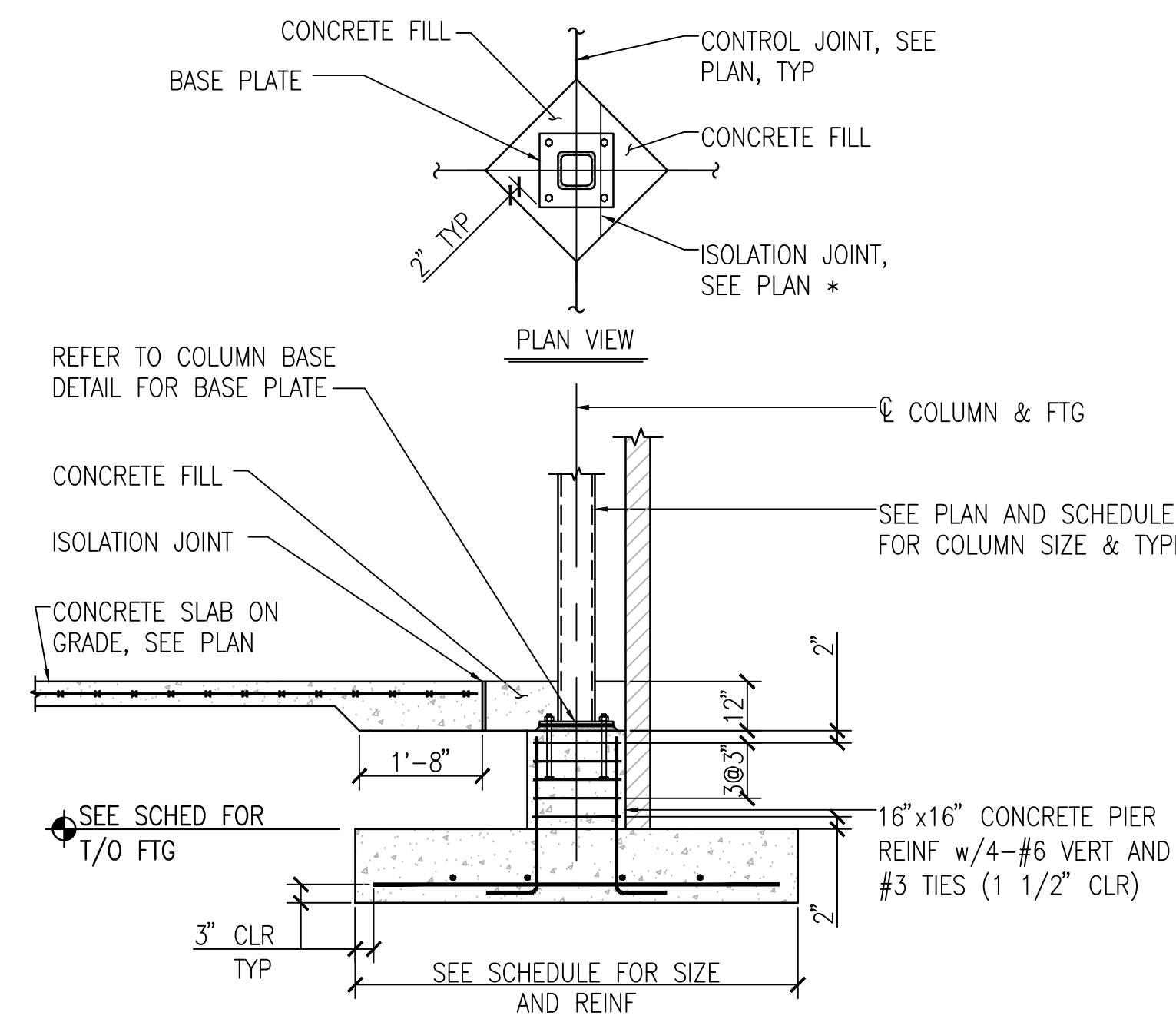


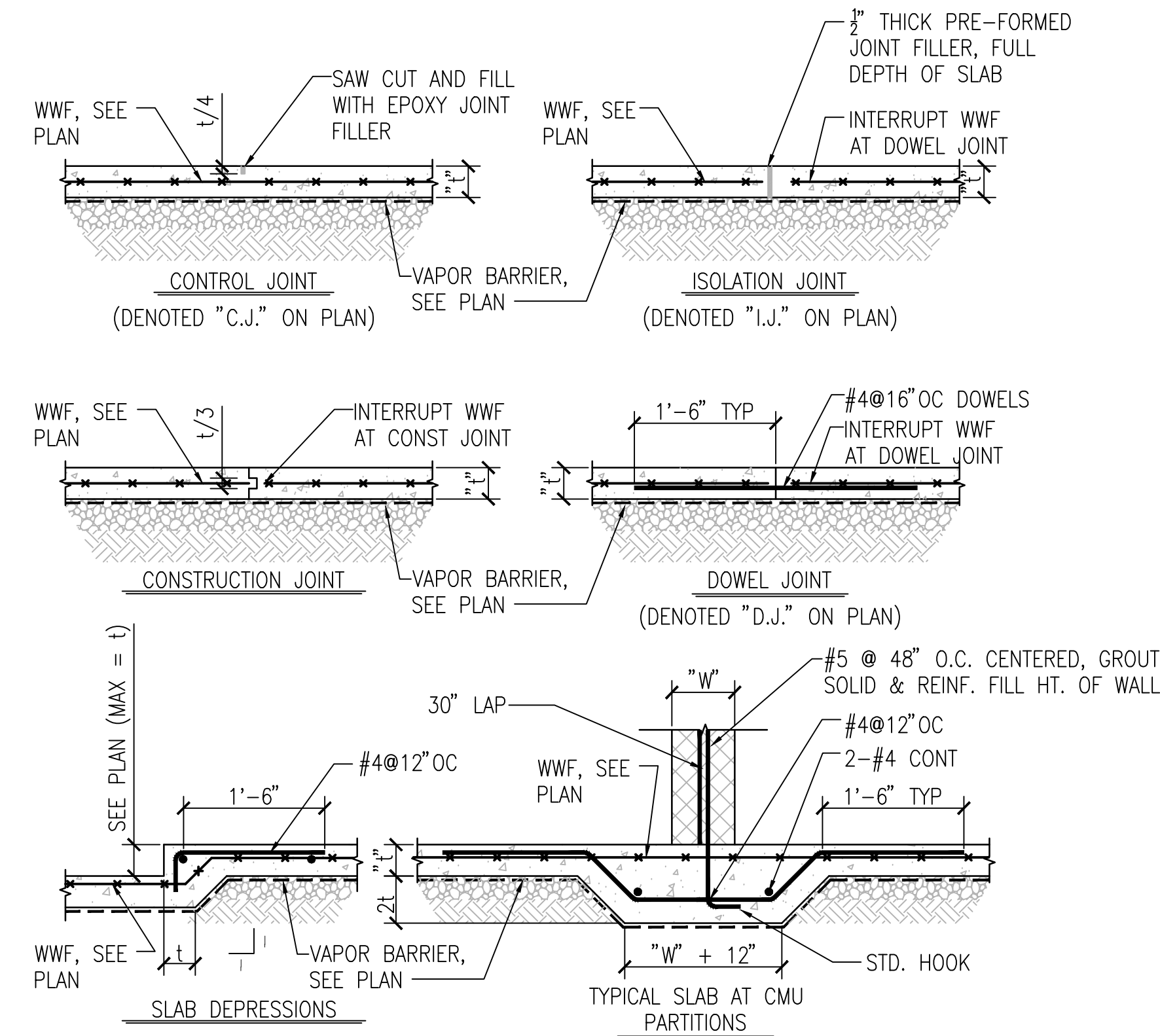
**A TYPICAL STEPPED WALL FOOTING**  
SCALE: 1/2" = 1'-0"



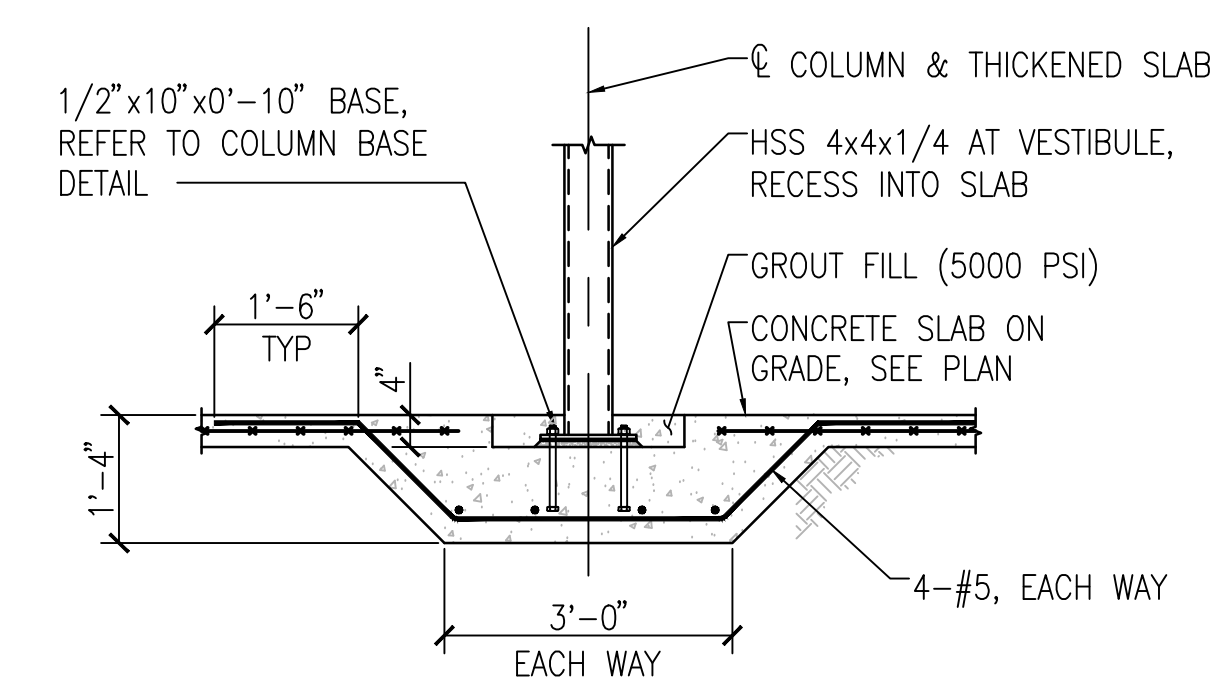
**B TYPICAL INTERIOR COLUMN FOOTING**  
SCALE: 1/2" = 1'-0"



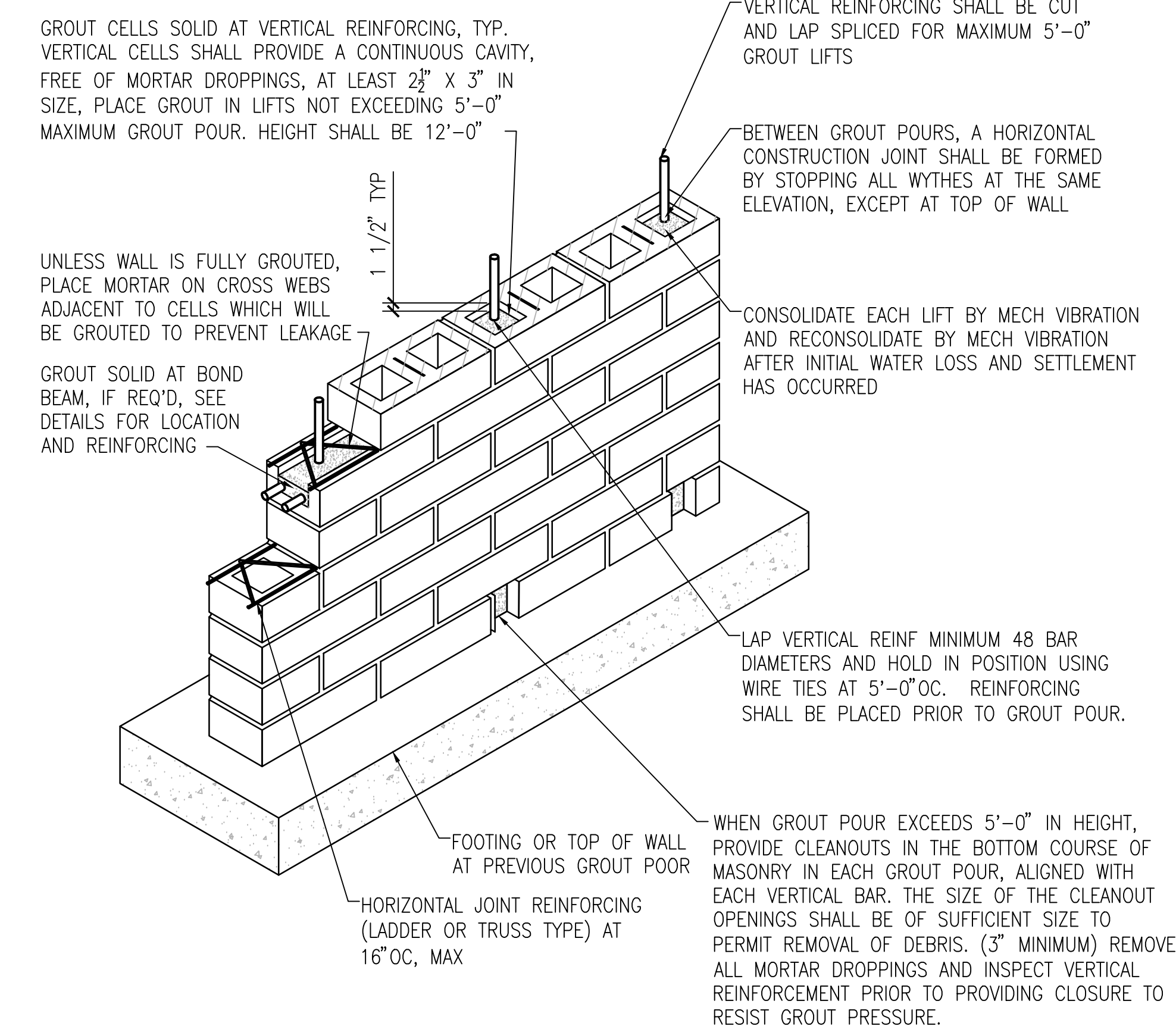
**C TYPICAL EXTERIOR COLUMN FOOTING**  
SCALE: 1/2" = 1'-0"



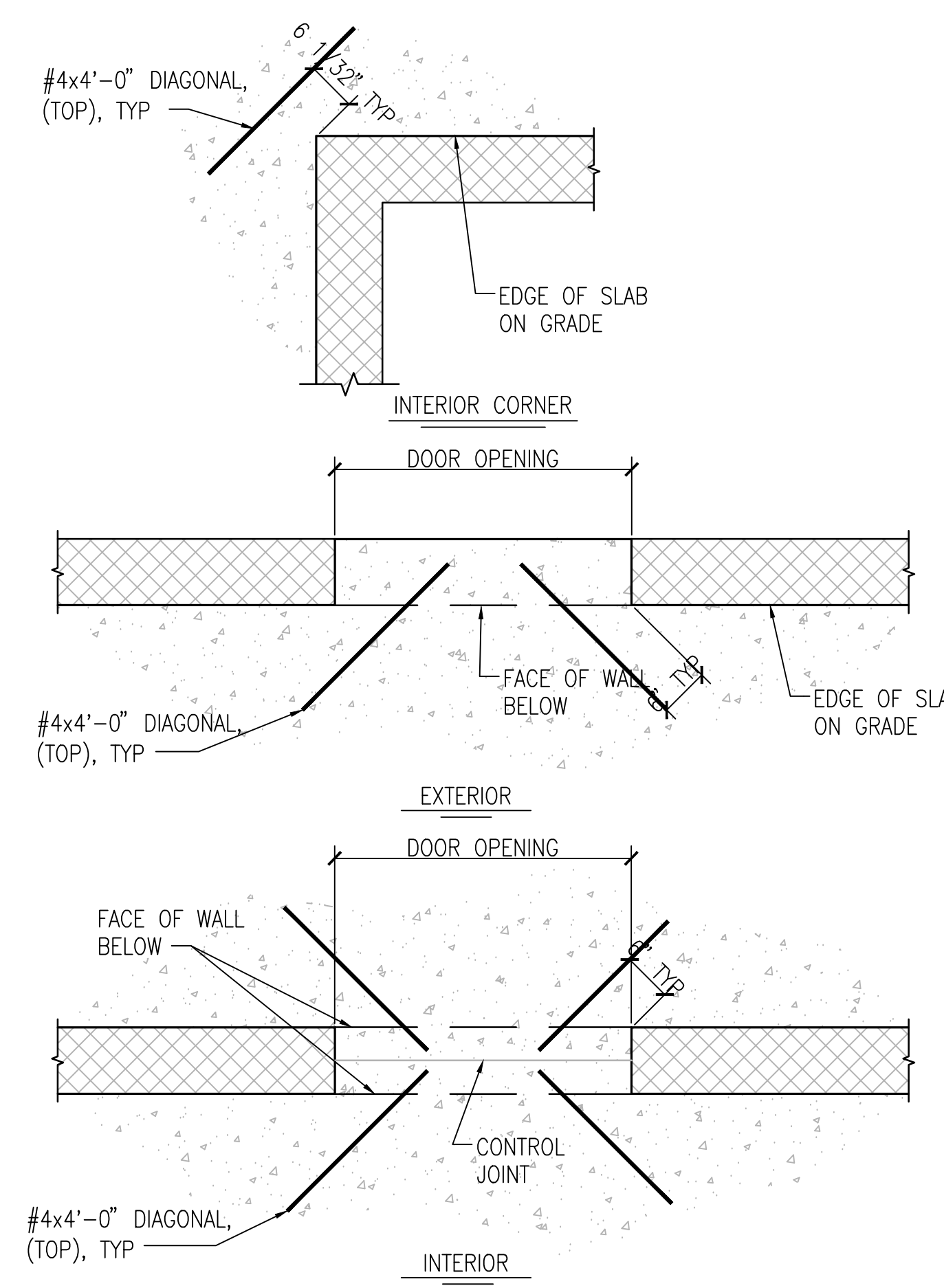
**D TYPICAL SLAB ON GRADE DETAILS**  
SCALE: 3/4" = 1'-0"



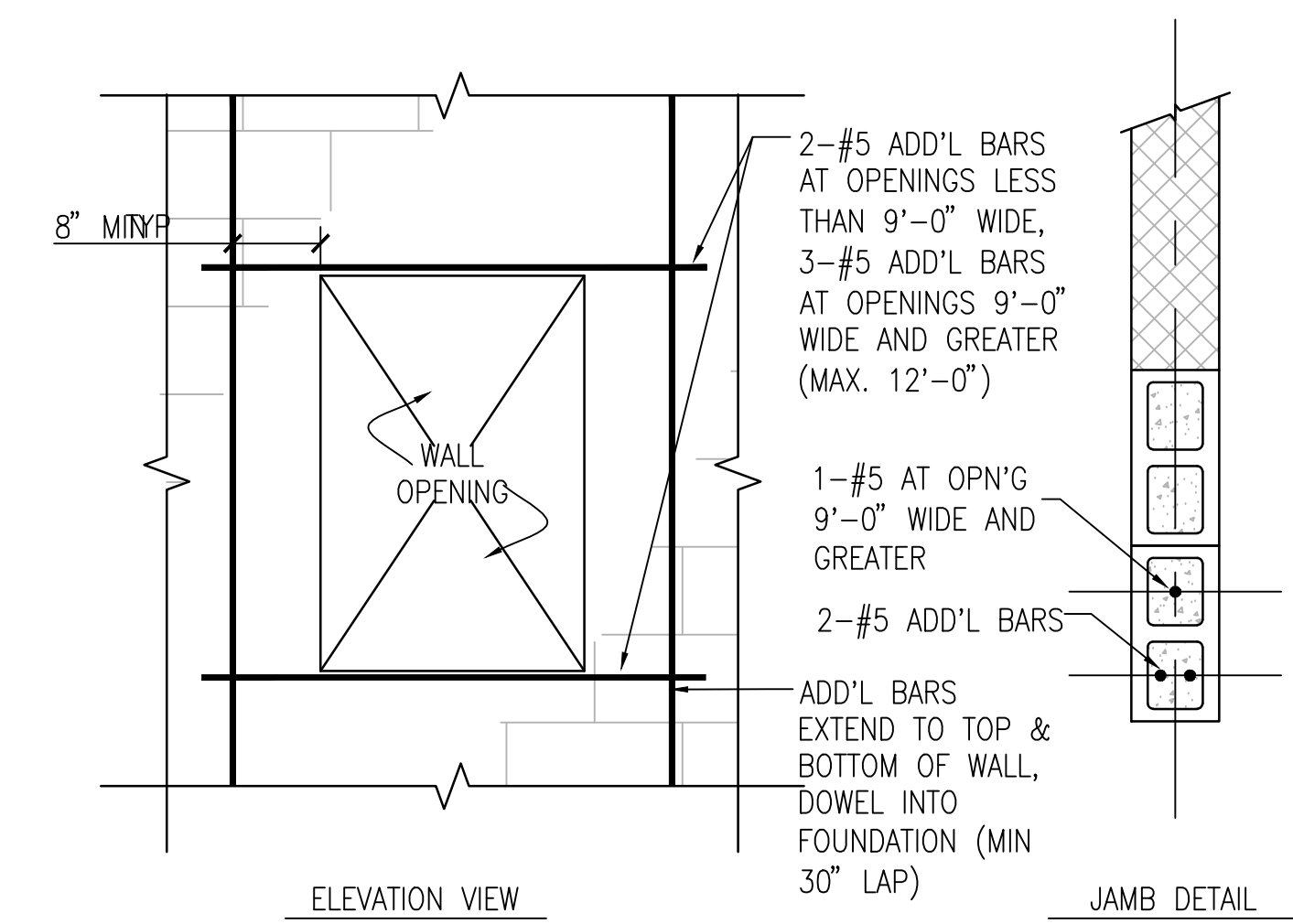
**E RECESSED VESTIBULE COLUMN**  
SCALE: 1/2" = 1'-0"



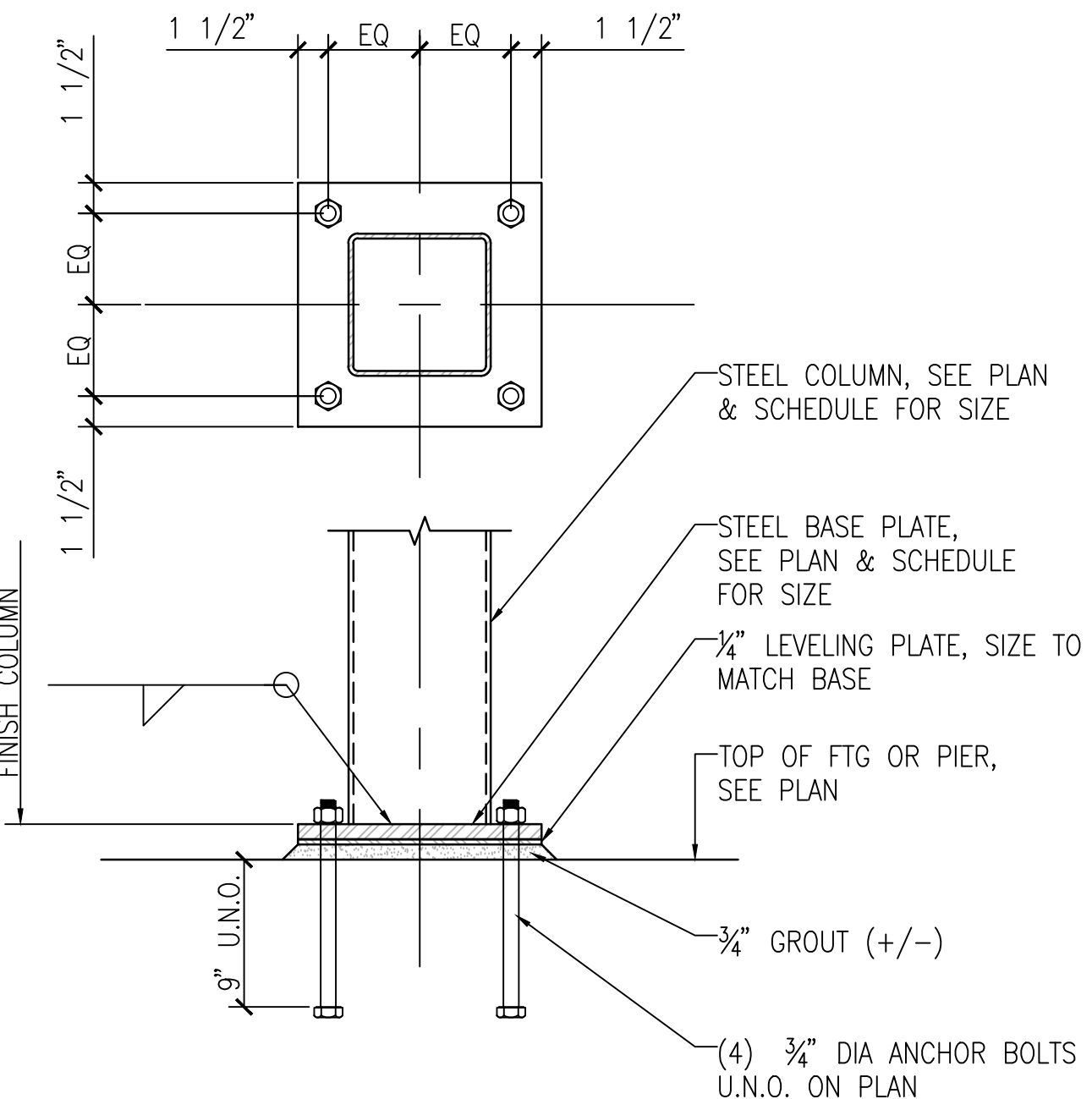
**G TYPICAL CMU CONSTRUCTION**  
SCALE: 1/2" = 1'-0"



**H ADDITIONAL SLAB REINFORCING AT CMU**  
SCALE: 3/4" = 1'-0"



**J ADDITIONAL REINF AT CMU WALL OPENING**  
SCALE: 3/4" = 1'-0"



**F TYPICAL HSS COLUMN BASE**  
SCALE: 1 1/2" = 1'-0"

<b>CONSULTANTS:</b> CIVIL: KENNETH HORNE & ASSOCIATES 7201 NORTH 9TH AVENUE, STE. 6 PENSACOLA, FLORIDA 32504 PH: (850) 471-9005 FX: (850) 471-0093 LANDSCAPE ARCHITECT: CSA GROUP, INC. 6300 PICCADILLY SQUARE DRIVE MOBILE, ALABAMA 36609 PH: (251) 344-4023 FX: (251) 344-4052		<b>ARCHITECT/ENGINEERS:</b> BES DESIGN/BUILD, LLC 766 Middle St, Fairhope, AL 36532 Phone: 251.990.5778 Fax: 251.990.3716		<b>Drawing Title</b> TYPICAL DETAILS		<b>Project Title</b> CONSTRUCT VA OUTPATIENT CLINIC, PANAMA CITY		<b>Project Number</b> 520-326		<b>Office of Construction and Facilities Management</b> Department of Veterans Affairs	
<b>Revisions:</b>		<b>Date</b>		<b>Approved Project Director</b>		<b>Location</b> PANAMA CITY, FLORIDA		<b>Building Number</b> -		<b>Drawing Number</b> SF201	
<b>VA FORM 08-6231</b>		<b>State of Florida Professional Engineer</b>		<b>Date</b> APRIL 2013		<b>Checked</b> NB		<b>Drawn</b> NB/KM		<b>Dwg 7 of 17</b>	