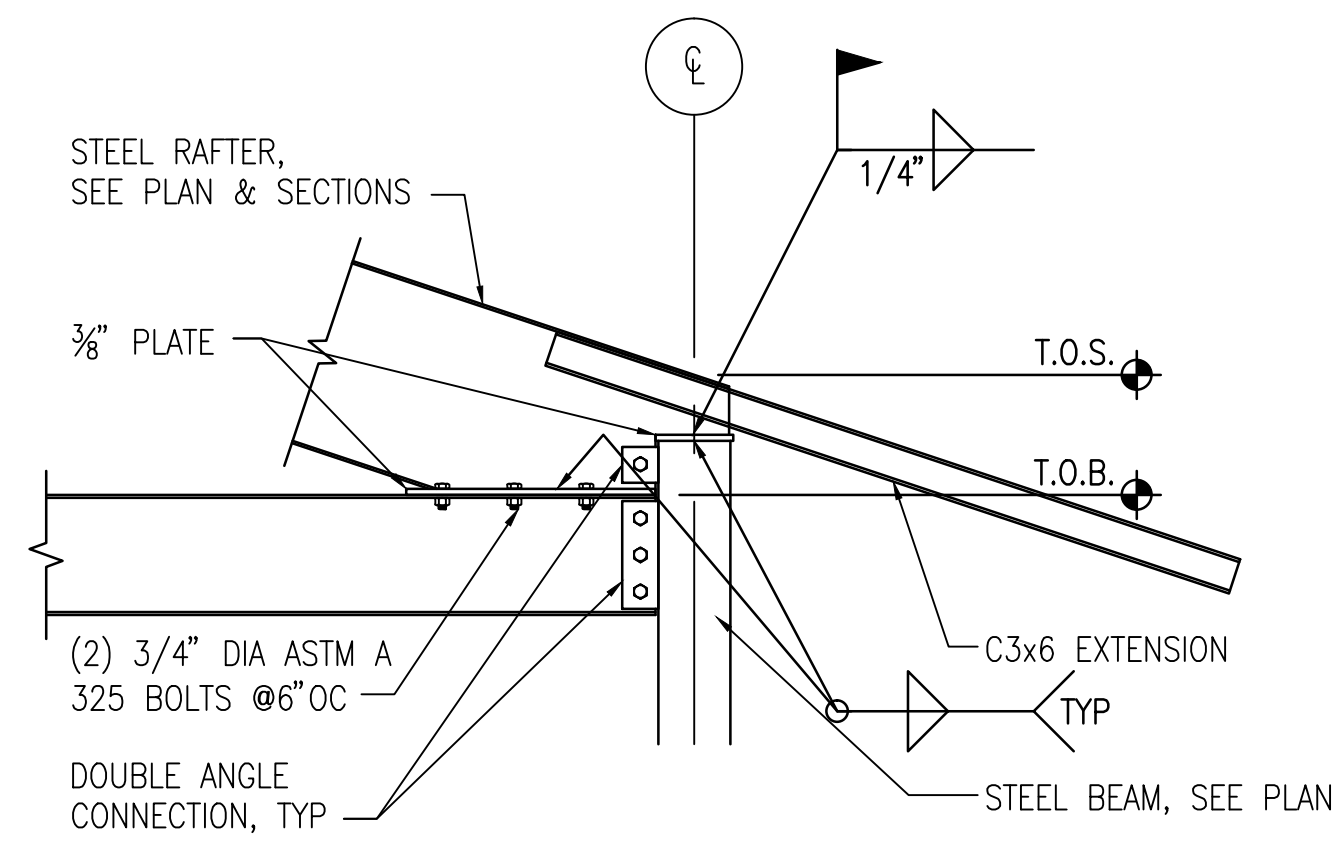
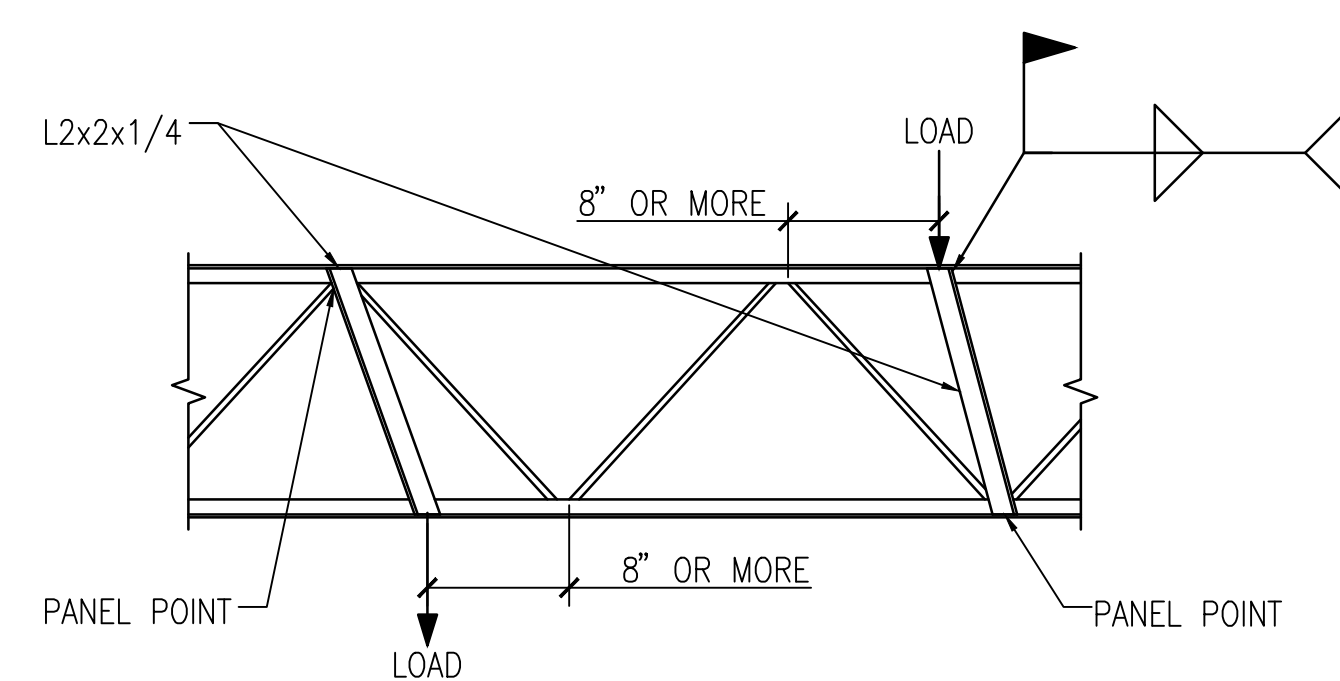


A TYPICAL RAFTER CONNECTION
SCALE: 3/4" = 1'-0"

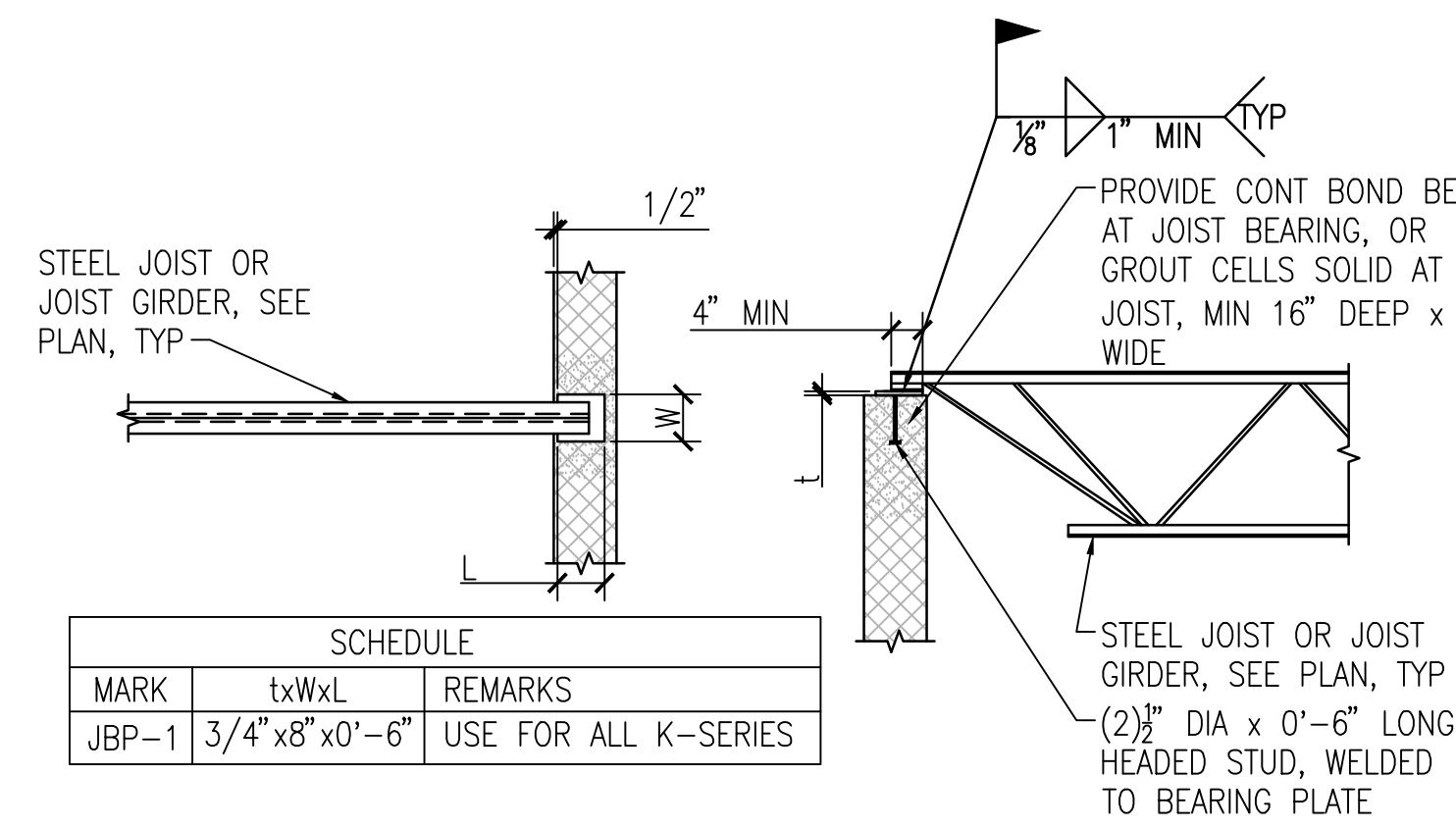


C TYPICAL CORNER CONNECTION
SCALE: 3/4" = 1'-0"



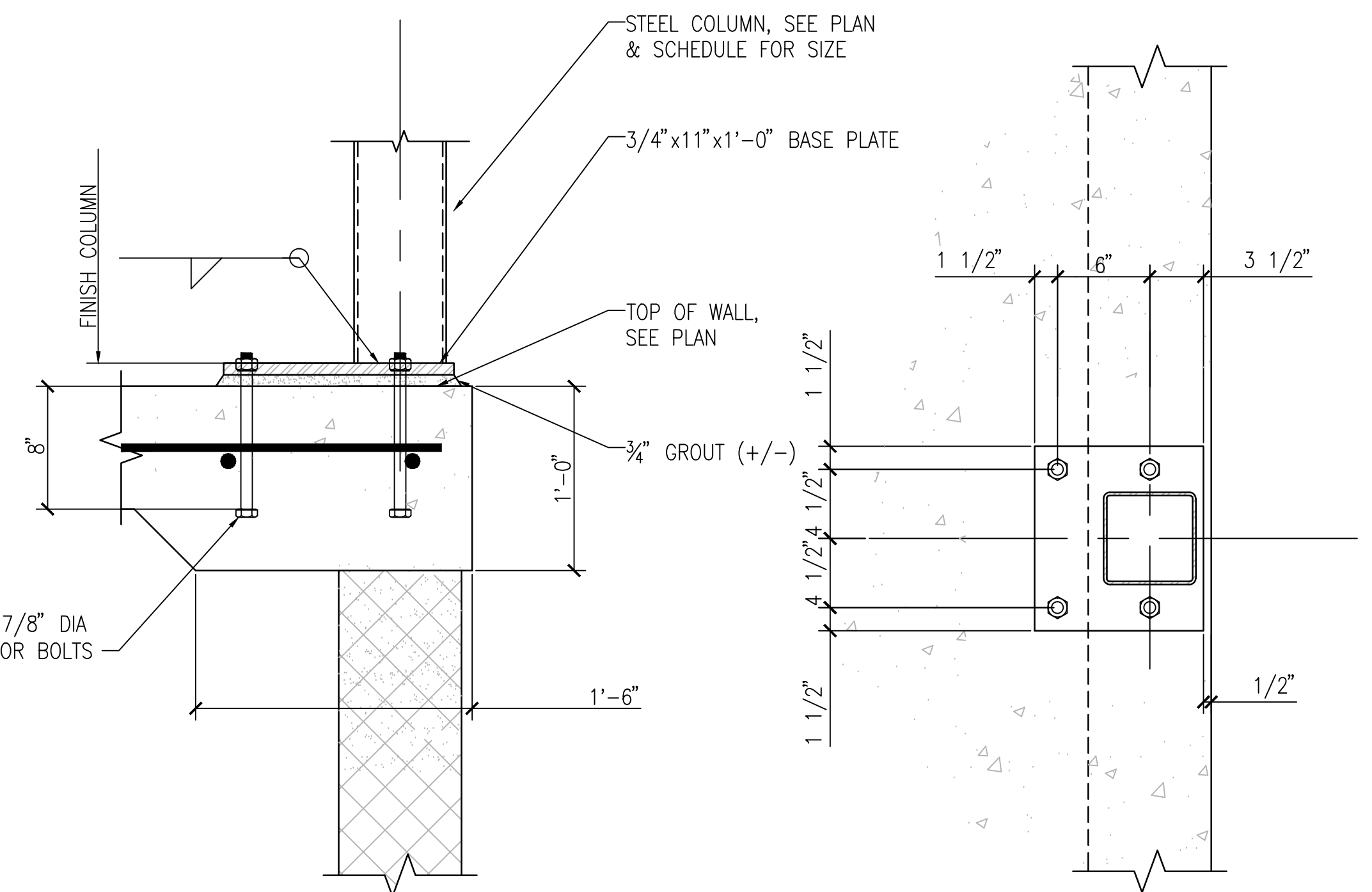
JOIST REINFORCEMENT AS INDICATED IS REQUIRED FOR ALL CONCENTRATED LOADS 500lb OR MORE, OCCURRING OUTSIDE OF A PANEL POINT. LOADS INCLUDE, BUT ARE NOT LIMITED TO, MECHANICAL EQUIPMENT, PIPING, AND ROOF STRUCTURE SUPPORTS.

E TYPICAL JOIST REINFORCEMENT
SCALE: 3/4" = 1'-0"

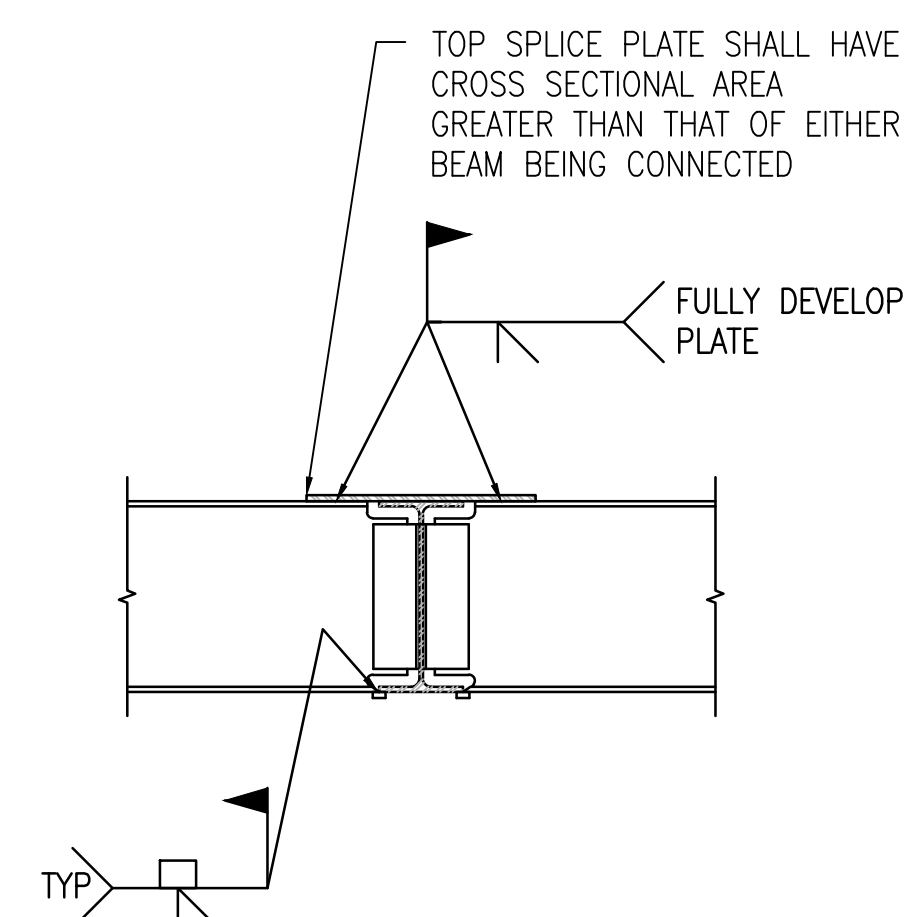


MARK	TXWXL	REMARKS
JBP-1	3/4"x8"x0'-6"	USE FOR ALL K-SERIES

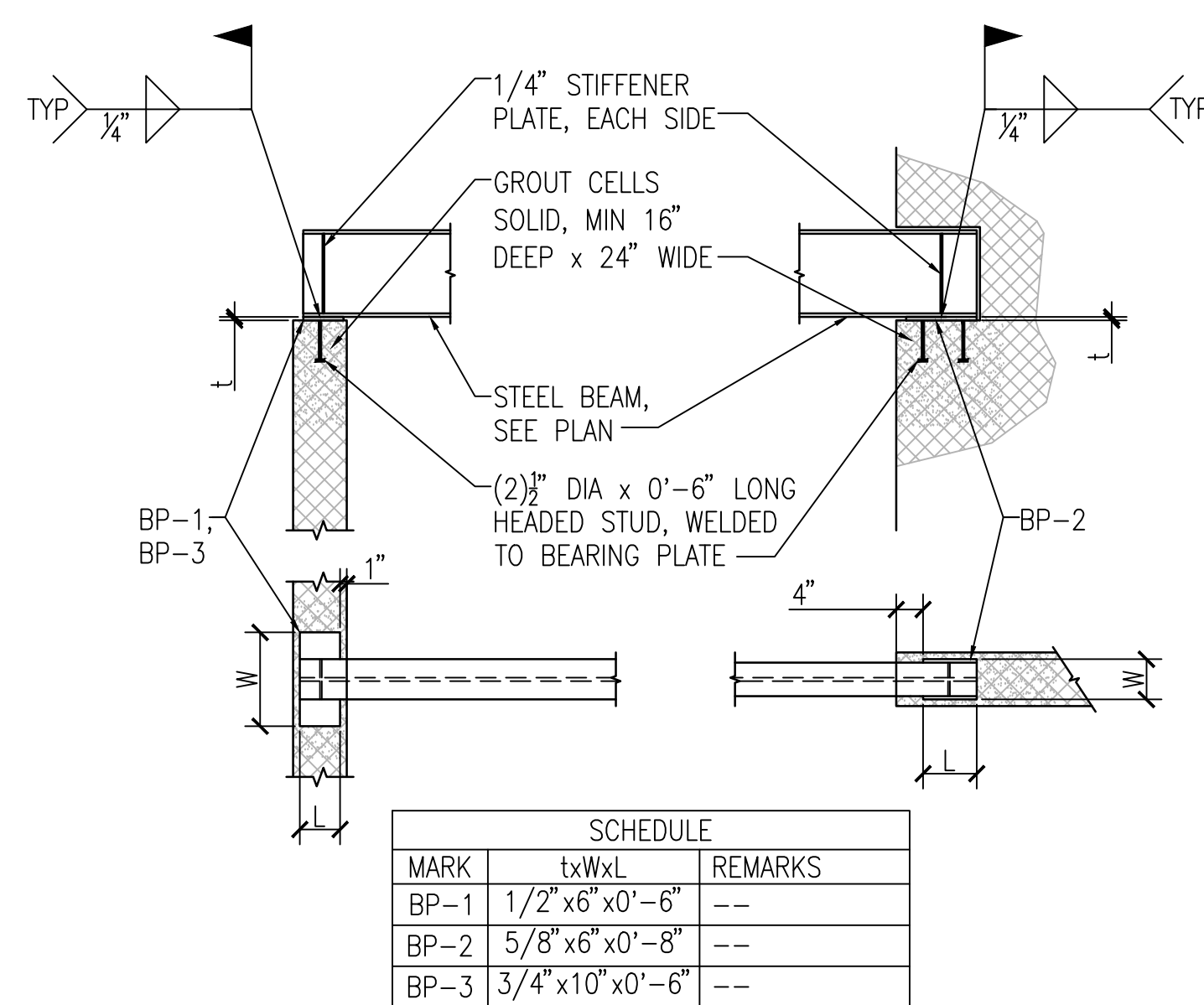
F TYPICAL JOIST BEARING AT CMU WALL
SCALE: 1/2" = 1'-0"



G TYPICAL COLUMN ON CMU WALL
SCALE: 1 1/2" = 1'-0"

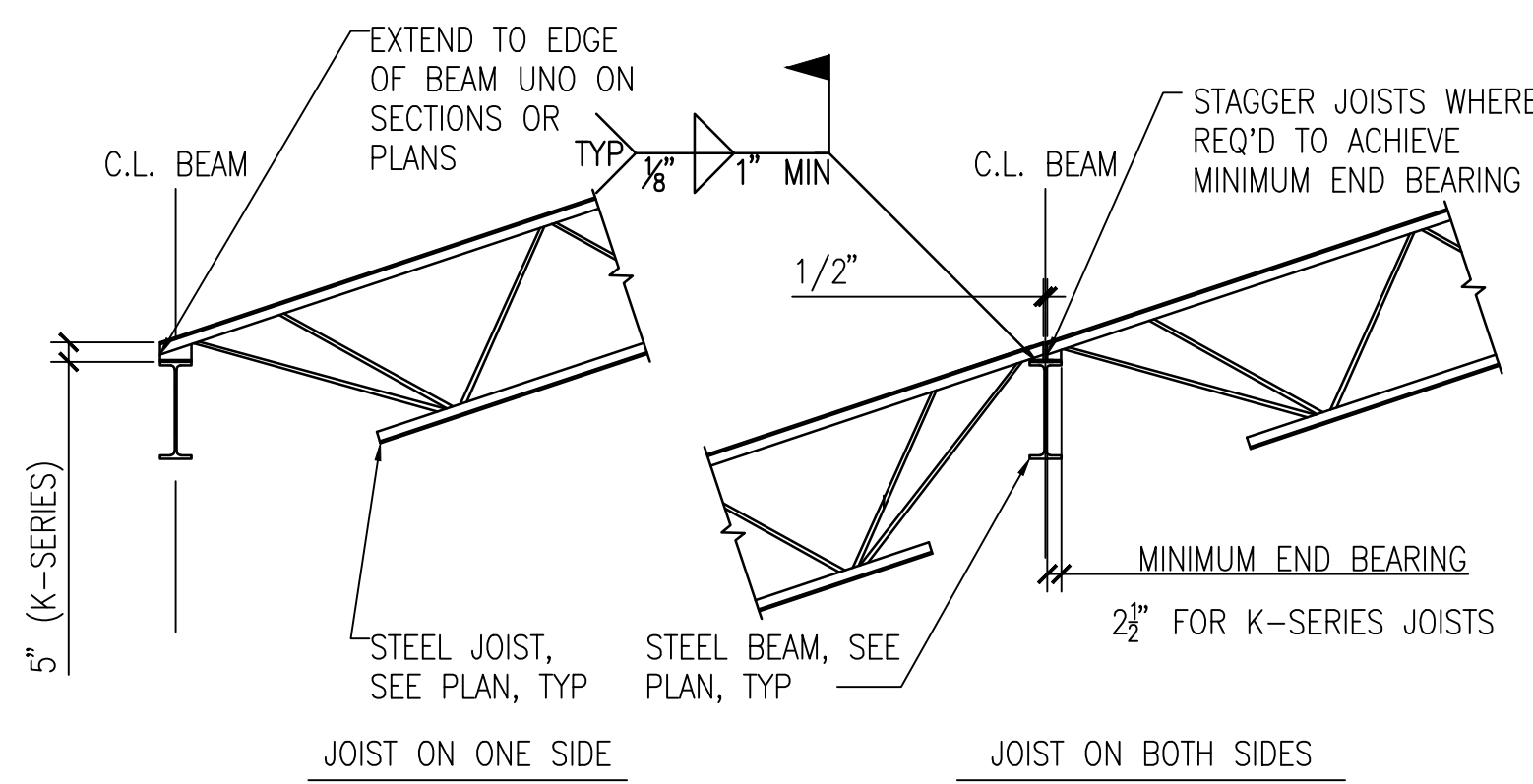


B TYPICAL BEAM TO BEAM MOMENT CONNECTION
SCALE: 3/4" = 1'-0"

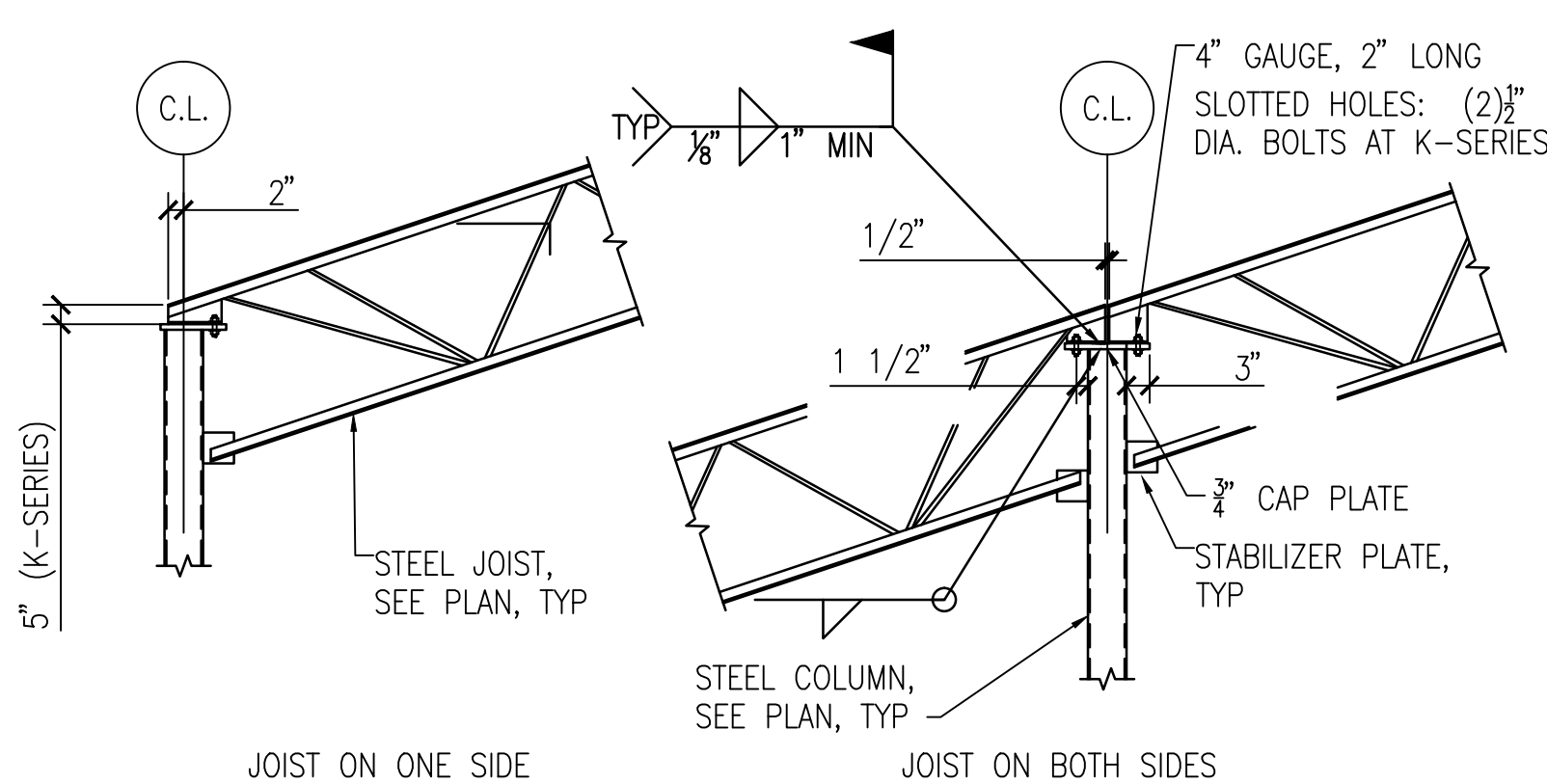


MARK	TXWXL	REMARKS
BP-1	1/2"x6"x0'-6"	---
BP-2	5/8"x6"x0'-8"	---
BP-3	3/4"x10"x0'-6"	---

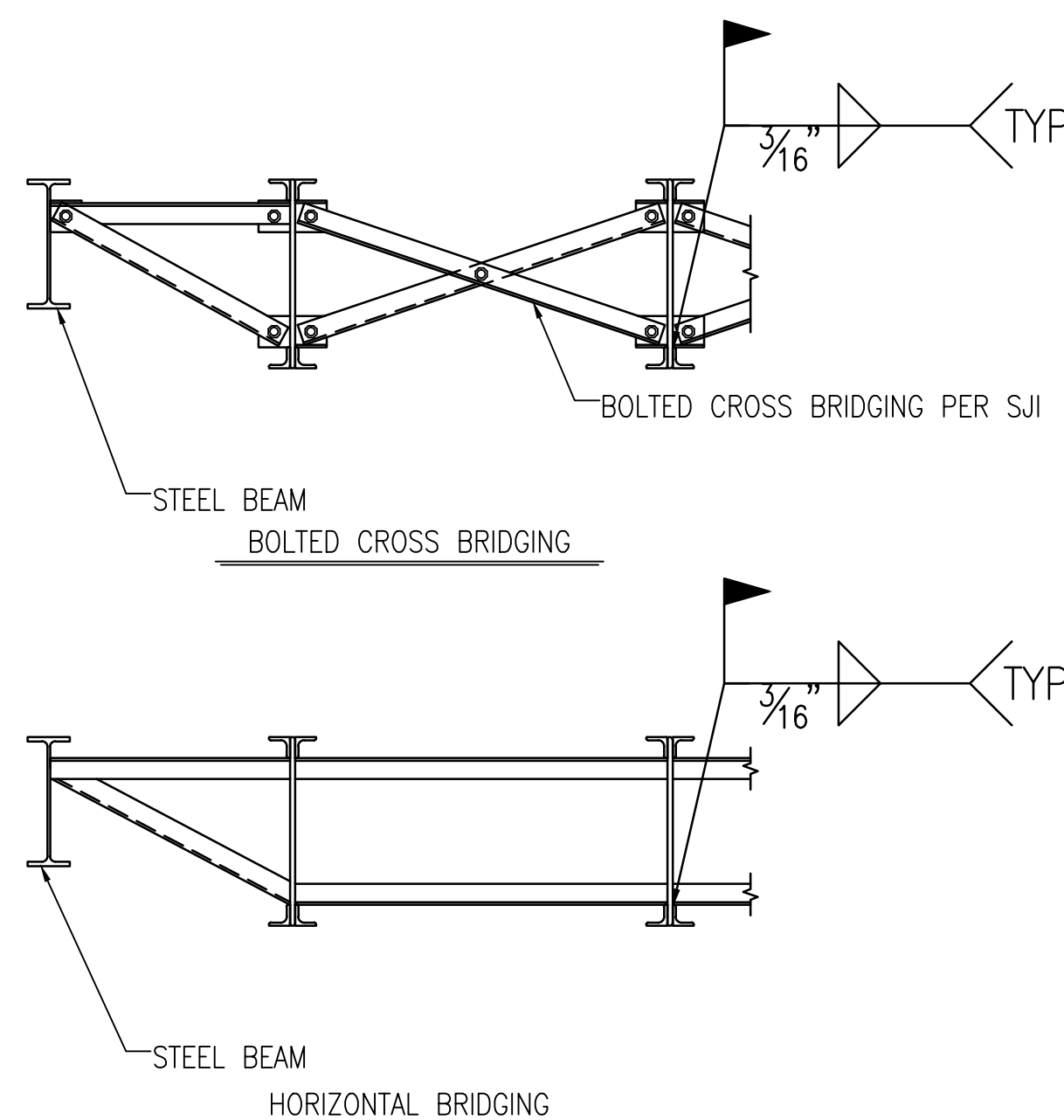
D TYPICAL BEAM BEARING AT CMU
SCALE: 1/2" = 1'-0"



J TYPICAL JOIST BEARING AT STEEL BEAM
SCALE: 1/2" = 1'-0"

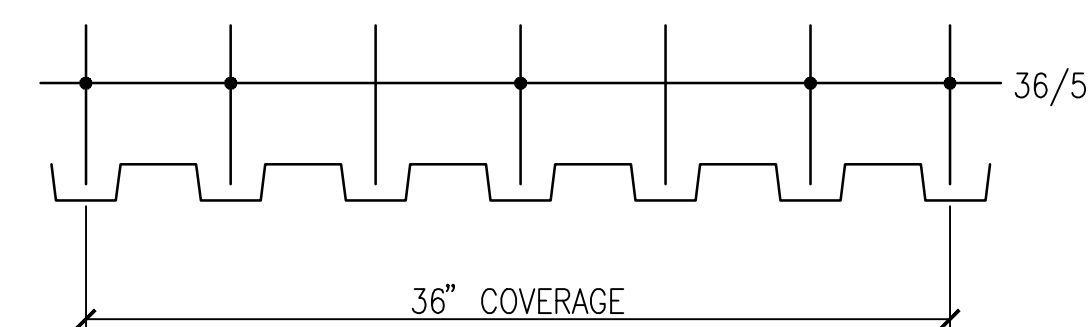


K TYPICAL JOIST BEARING AT ROOF COLUMN
SCALE: 1/2" = 1'-0"



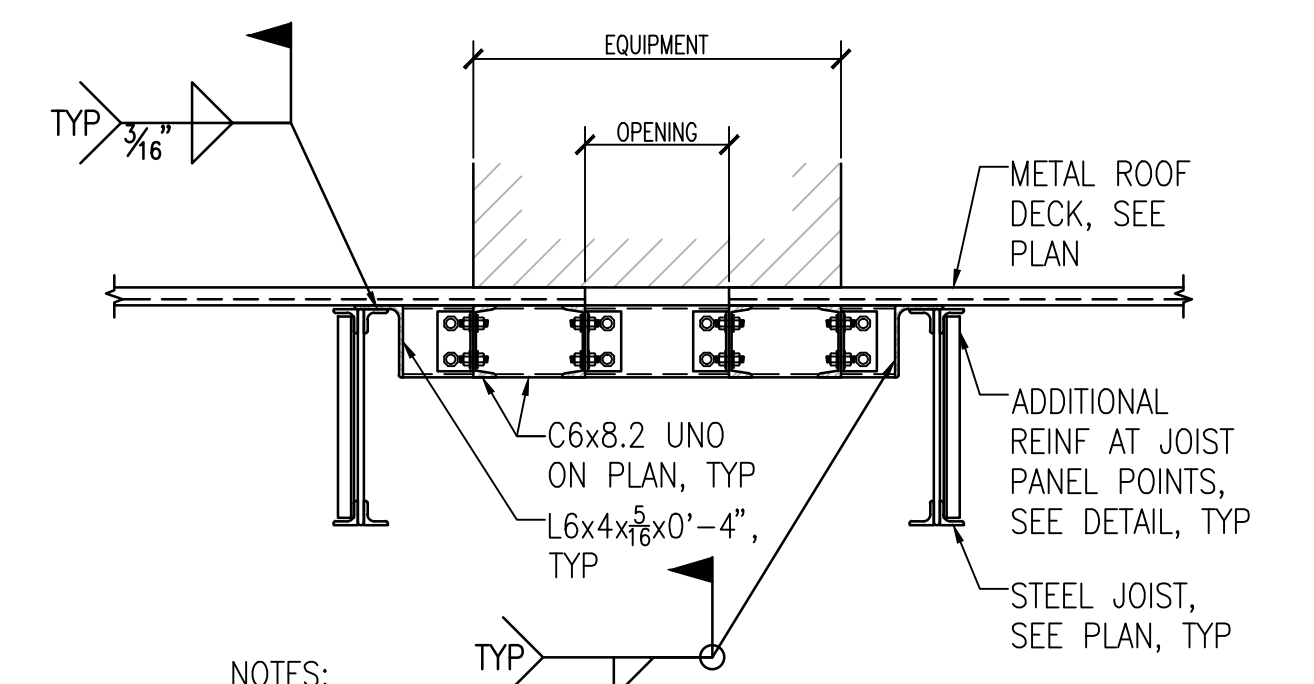
NOTES:
1. DO NOT WELD BRIDGING TO JOIST WEB MEMBERS.
2. DO NOT HANG MECHANICAL, ELECTRICAL, ETC. EQUIPMENT FROM BRIDGING.

H TYPICAL JOIST BRIDGING
SCALE: 3/4" = 1'-0"



DECK PROPERTIES	CONNECTION TYPE
TYPE: B	PATTERN: 36/4
DEPTH: 1 1/2"	SUPPORT: 3/8" PUDDLE WELD
GAUGE: 22	SIDE LAP: #10 TEK AT 30" OC, MAX
I: 0.169 in~4	
Sp: 0.186 in~3	
Sn: 0.192 in~3	

L TYPICAL METAL ROOF DECK
SCALE: 1 1/2" = 1'-0"



NOTES:
1. REFER TO ARCHITECTURAL, MECHANICAL, AND ELECTRICAL DRAWINGS FOR ROOF TOP EQUIPMENT AND OPENING LOCATIONS. COORDINATE FRAMING DIMENSIONS WITH EQUIPMENT MANUFACTURERS.
2. ADDITIONAL FRAMING AROUND ROOF OPENINGS IS REQUIRED FOR ALL OPENINGS GREATER THAN 8"x8".

M TYPICAL FRAMING AT ROOF OPENINGS AND EQUIPMENT
SCALE: 3/4" = 1'-0"

CONSULTANTS: CIVIL: KENNETH HORNE & ASSOCIATES 7201 NORTH 9TH AVENUE, STE. 300 PENSACOLA, FLORIDA 32504 PH: (850) 471-9005 PH: (850) 438-0050 FX: (850) 471-0093 LANDSCAPE ARCHITECT: CSA GROUP, INC. 6300 PICCADILLY SQUARE DRIVE MOBILE, ALABAMA 36609 PH: (251) 344-4023 FX: (251) 344-4052		ARCHITECT/ENGINEERS: COMM/DS: SCHMIDT CONSULTING GROUP, INC. 40 S. PALAFOX PLACE, STE. 300 PENSACOLA, FLORIDA 32502 PH: (850) 432-8631 SURVEYORS: KOI TECHNOLOGIES, INC. 10401 HIGHLAND MANOR DRIVE, SUITE 120 TAMPA, FLORIDA 33610 PH: (813) 740-2300		Drawing Title TYPICAL DETAILS Approved Project Director		Project Title CONSTRUCT VA OUTPATIENT CLINIC, PANAMA CITY Location PANAMA CITY, FLORIDA Date APRIL 2013		Project Number 520-326 Building Number - Drawing Number SF203 Dwg 9 of 17		Office of Construction and Facilities Management Department of Veterans Affairs	
--	--	---	--	--	--	---	--	--	--	--	--

FINAL SUBMISSION / FULLY SPRINKLERED