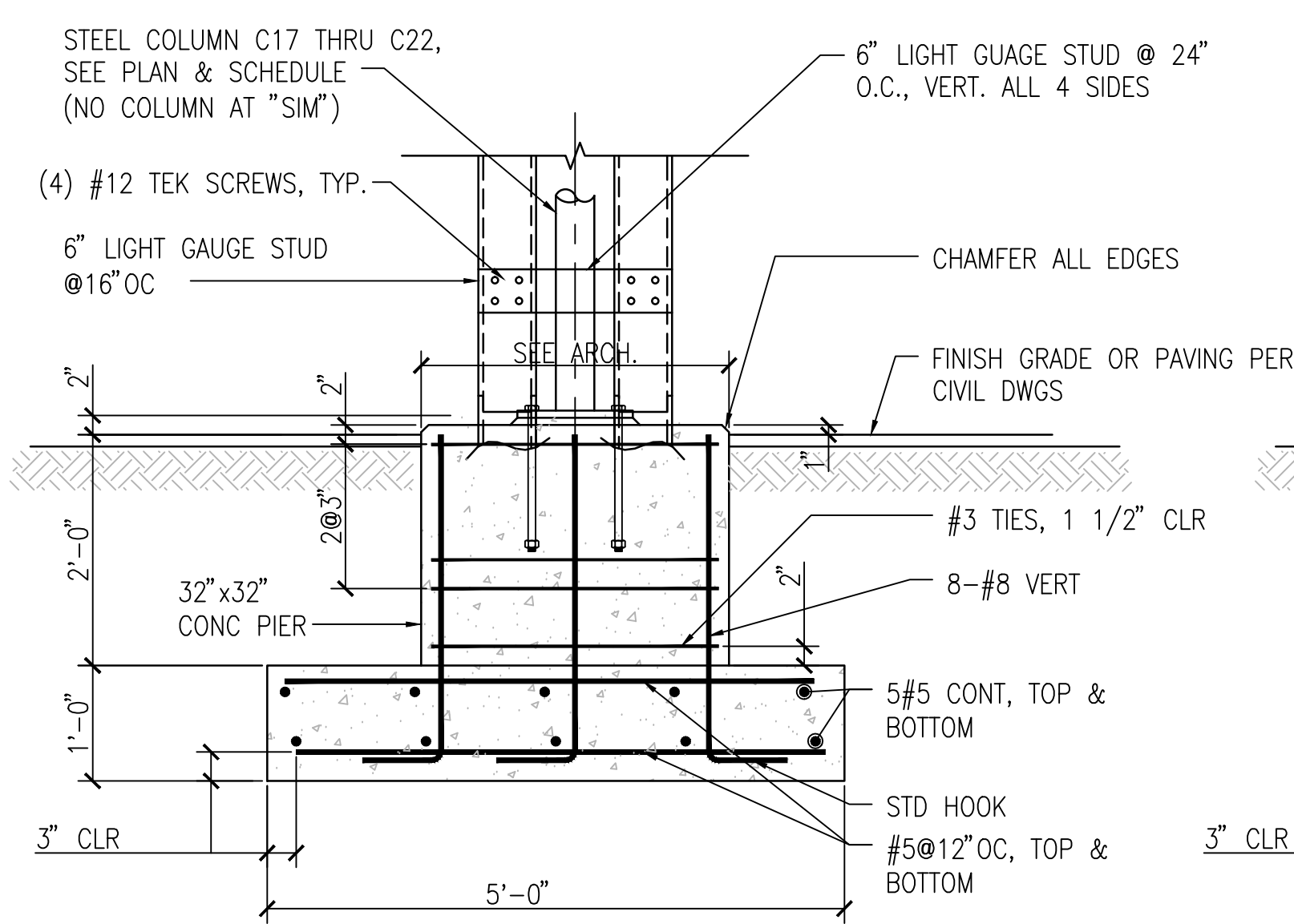
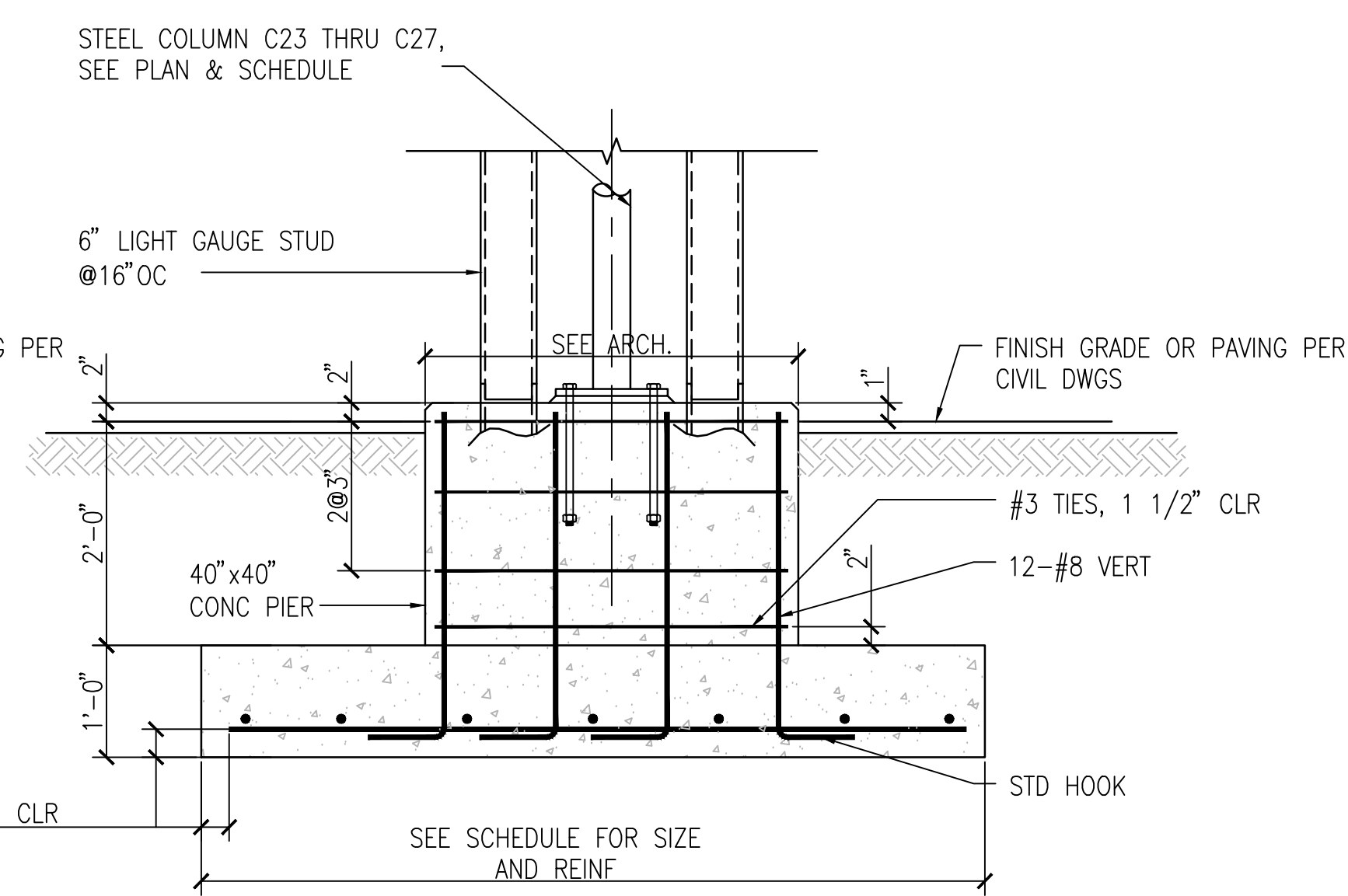


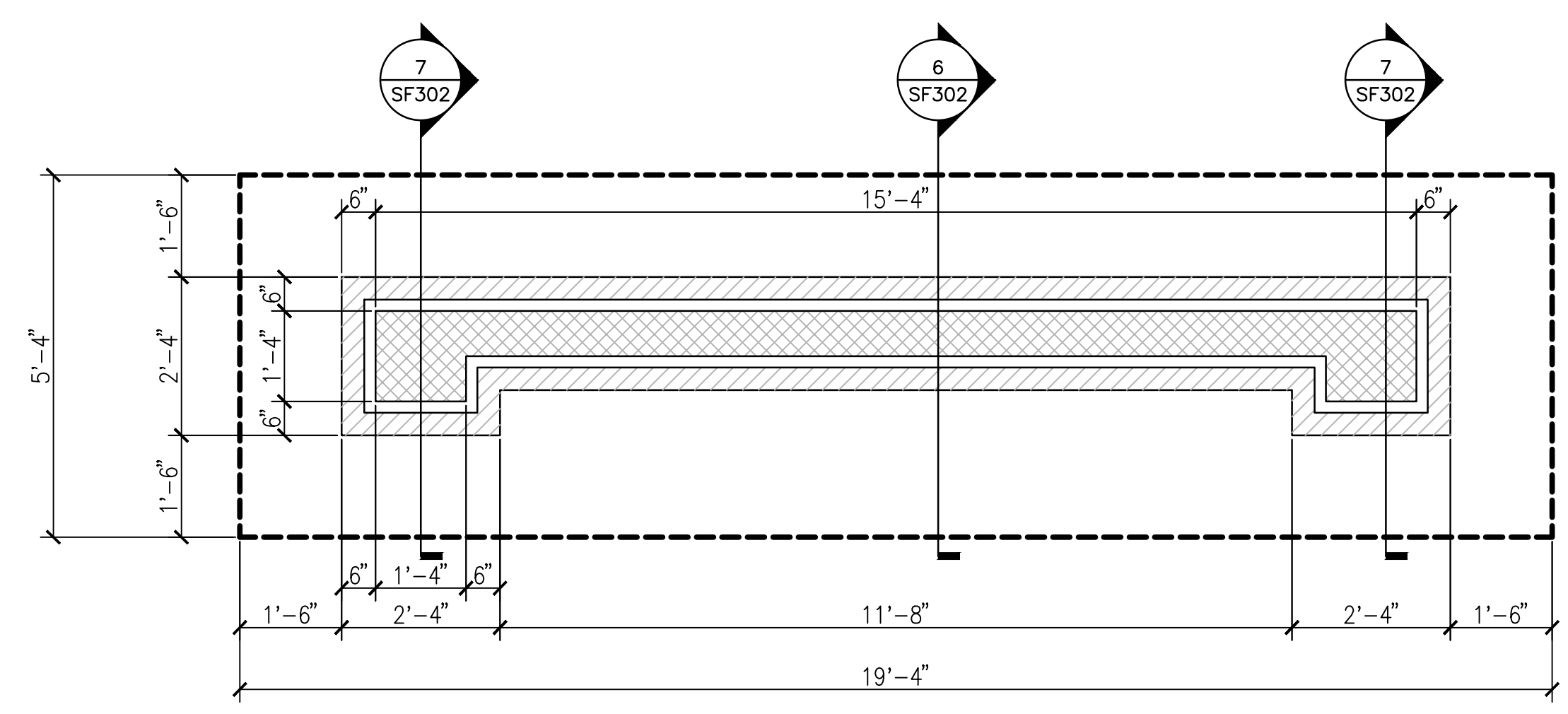
A
three inches = one foot
one and one half inches = one foot
one inch = one foot
three quarters inch = one foot
one half inch = one foot
three eighths inch = one foot
one quarter inch = one foot
one eighth inch = one foot



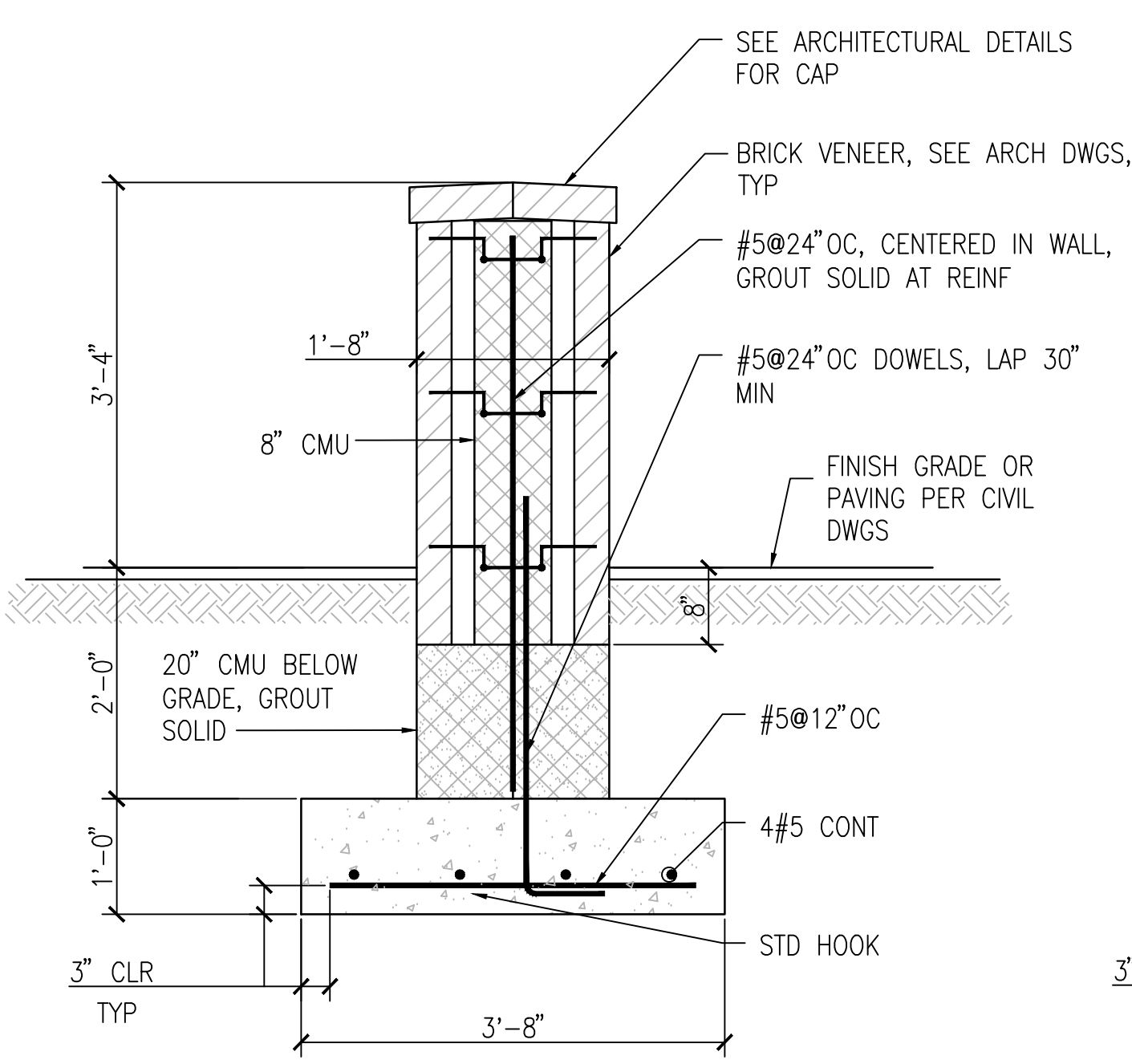
2 FOUNDATION SECTION AT COVERED ENTRY COLUMN
SCALE: 3/4" = 1'-0"



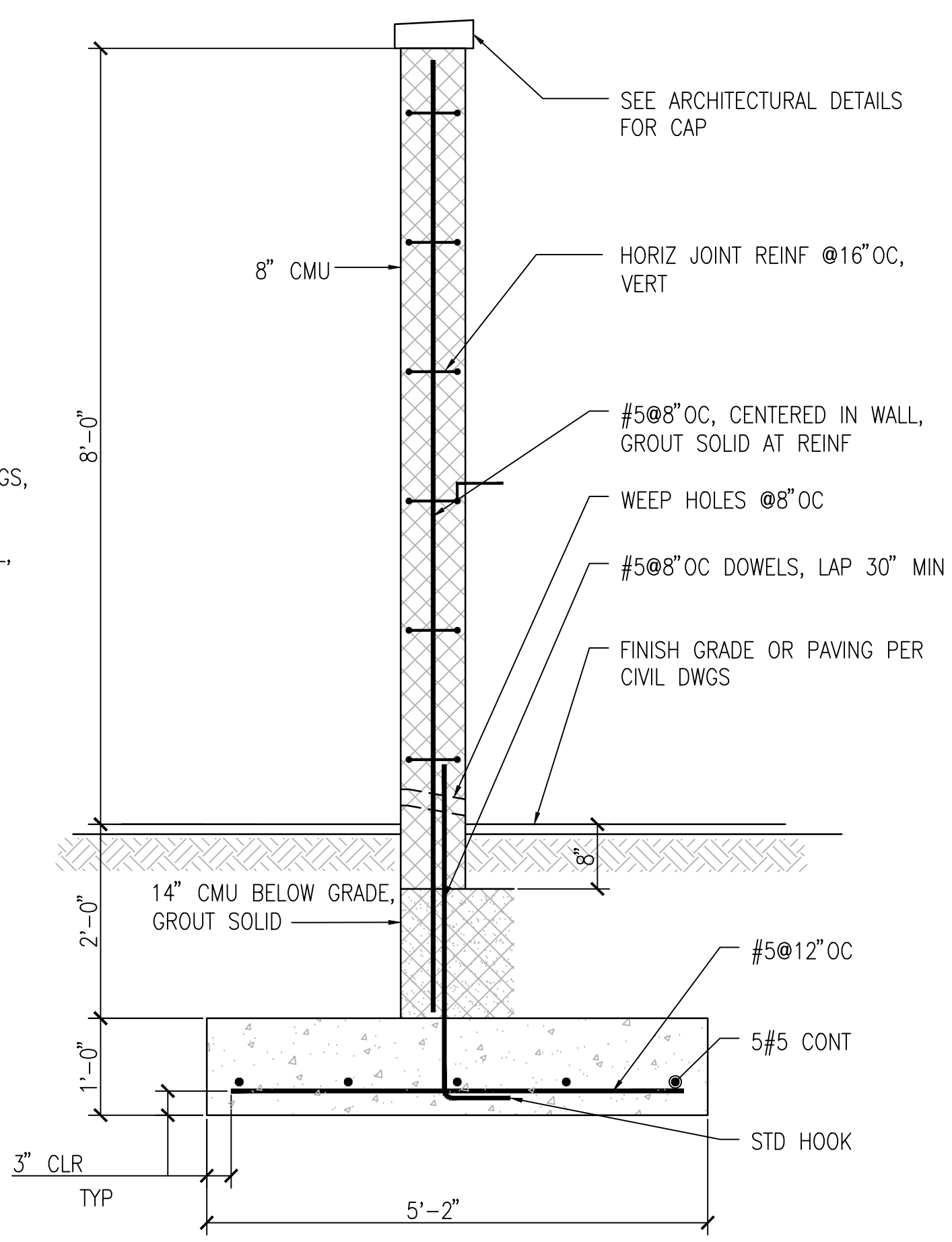
3 FOUNDATION SECTION AT COVERED DROP COLUMN
SCALE: 3/4" = 1'-0"



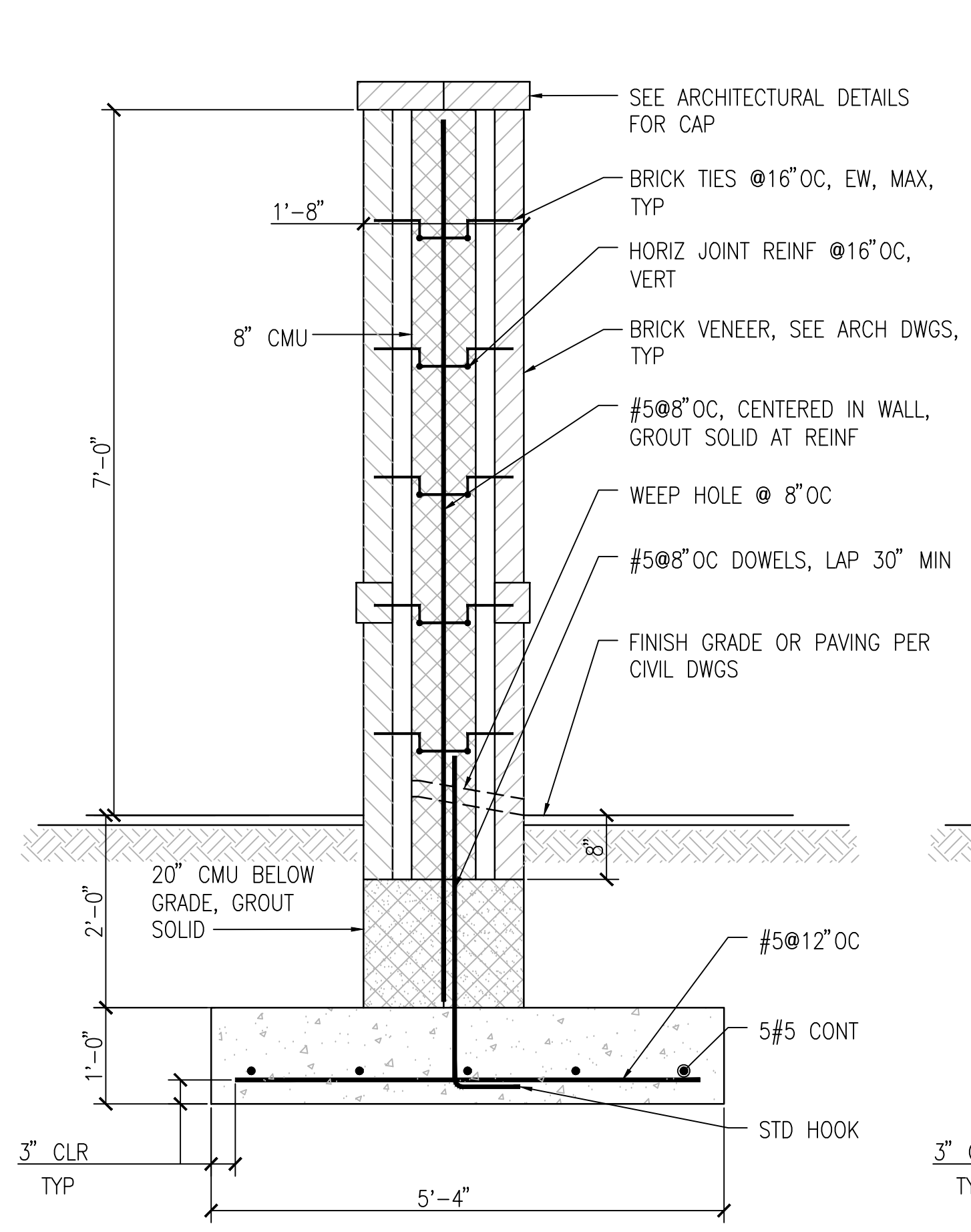
NOTE: SEE CIVIL DRAWINGS FOR PLAN LOCATIONS
A FOUNDATION PLAN VIEW AT ENTRANCE WALL
SCALE: 1/2" = 1'-0"



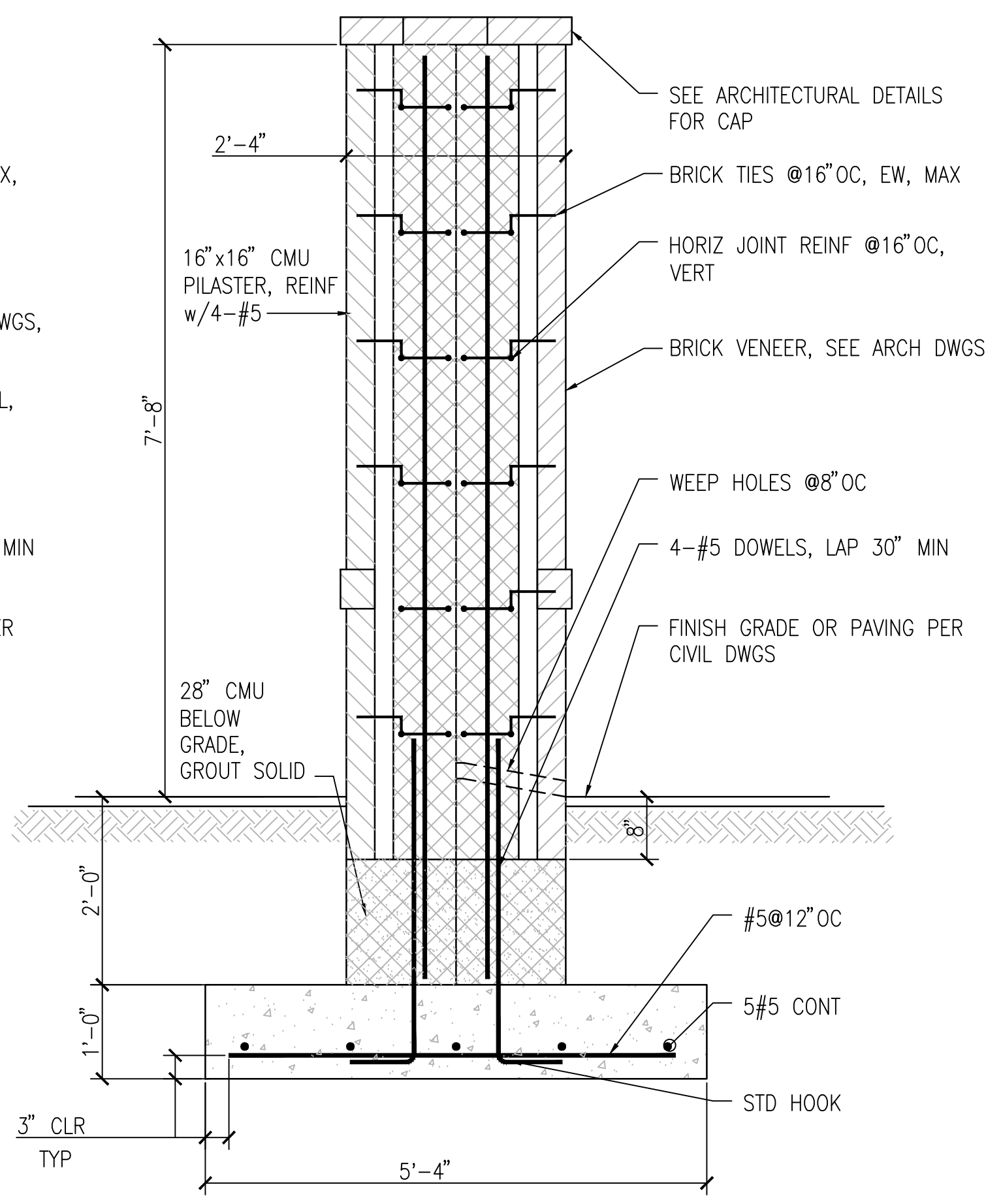
4 FOUNDATION SECTION AT LOW WALL
SCALE: 3/4" = 1'-0"



5 FOUNDATION SECTION AT DUMPSTER AND TRANSFORMER WALL
SCALE: 3/4" = 1'-0"



6 FOUNDATION SECTION AT ENTRANCE WALL
SCALE: 3/4" = 1'-0"



7 FOUNDATION SECTION AT ENTRANCE PILASTER
SCALE: 3/4" = 1'-0"

CONSULTANTS: CIVIL: KENNETH HORNE & ASSOCIATES 7201 NORTH 9TH AVENUE, STE. 6 PENSACOLA, FLORIDA 32504 PH: (850) 471-9005 FX: (850) 471-0093 LANDSCAPE ARCHITECT: CSA GROUP, INC. 6300 PICCADILLY SQUARE DRIVE MOBILE, ALABAMA 36609 PH: (251) 344-4023 FX: (251) 344-4052		ARCHITECT/ENGINEERS: BES DESIGN/BUILD, LLC 766 Middle St, Fairhope, AL 36532 Phone: 251.990.5778 Fax: 251.990.3716		Drawing Title FOUNDATION SECTIONS AT SCREEN WALLS Approved Project Director		Project Title CONSTRUCT VA OUTPATIENT CLINIC, PANAMA CITY Location PANAMA CITY, FLORIDA Date APRIL 2013		Project Number 520-326 Building Number - Drawing Number SF302 Dwg. 11 of 17		Office of Construction and Facilities Management Department of Veterans Affairs	
Revisions:						Checked NB		Drawn NB/KM			