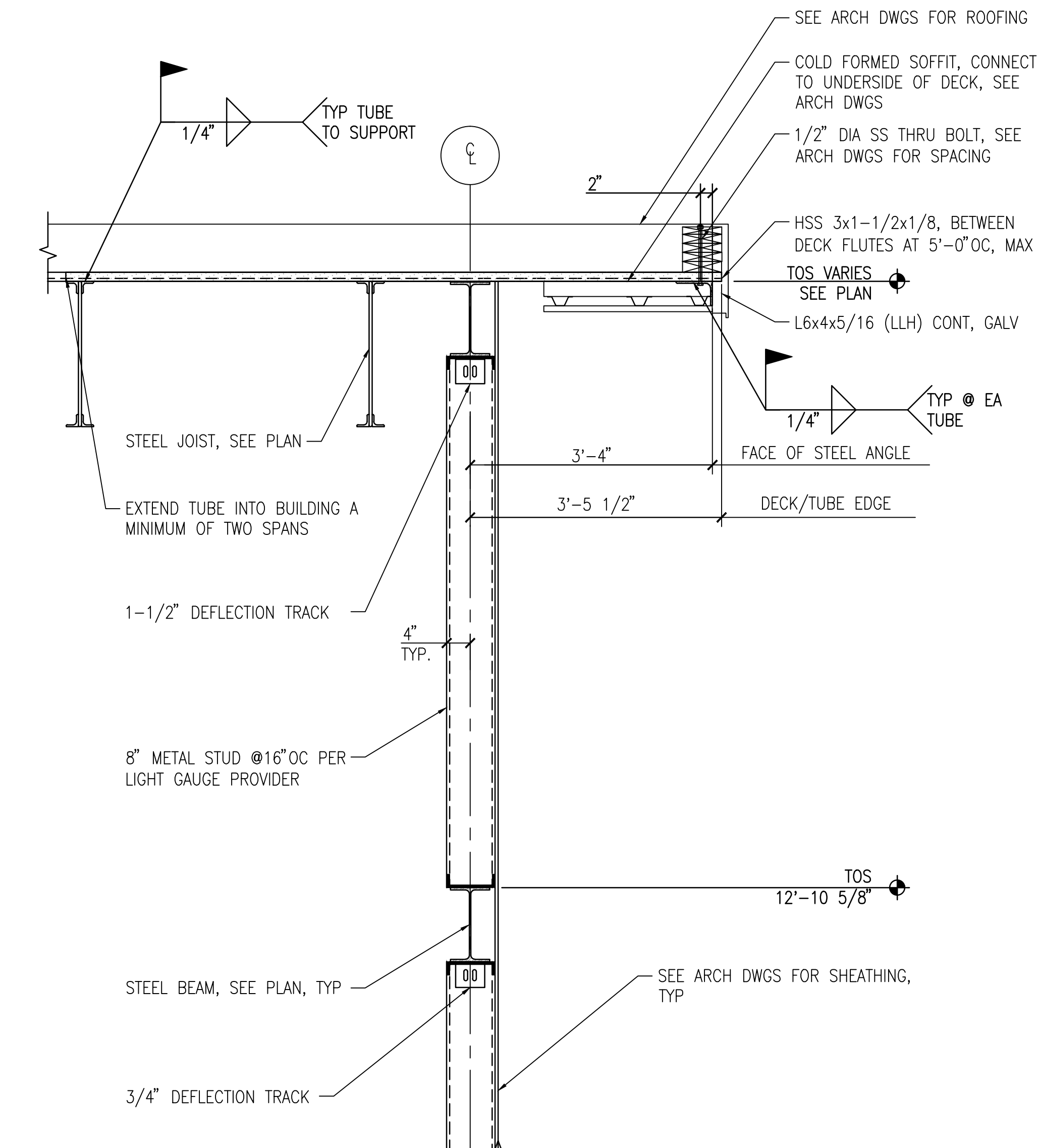
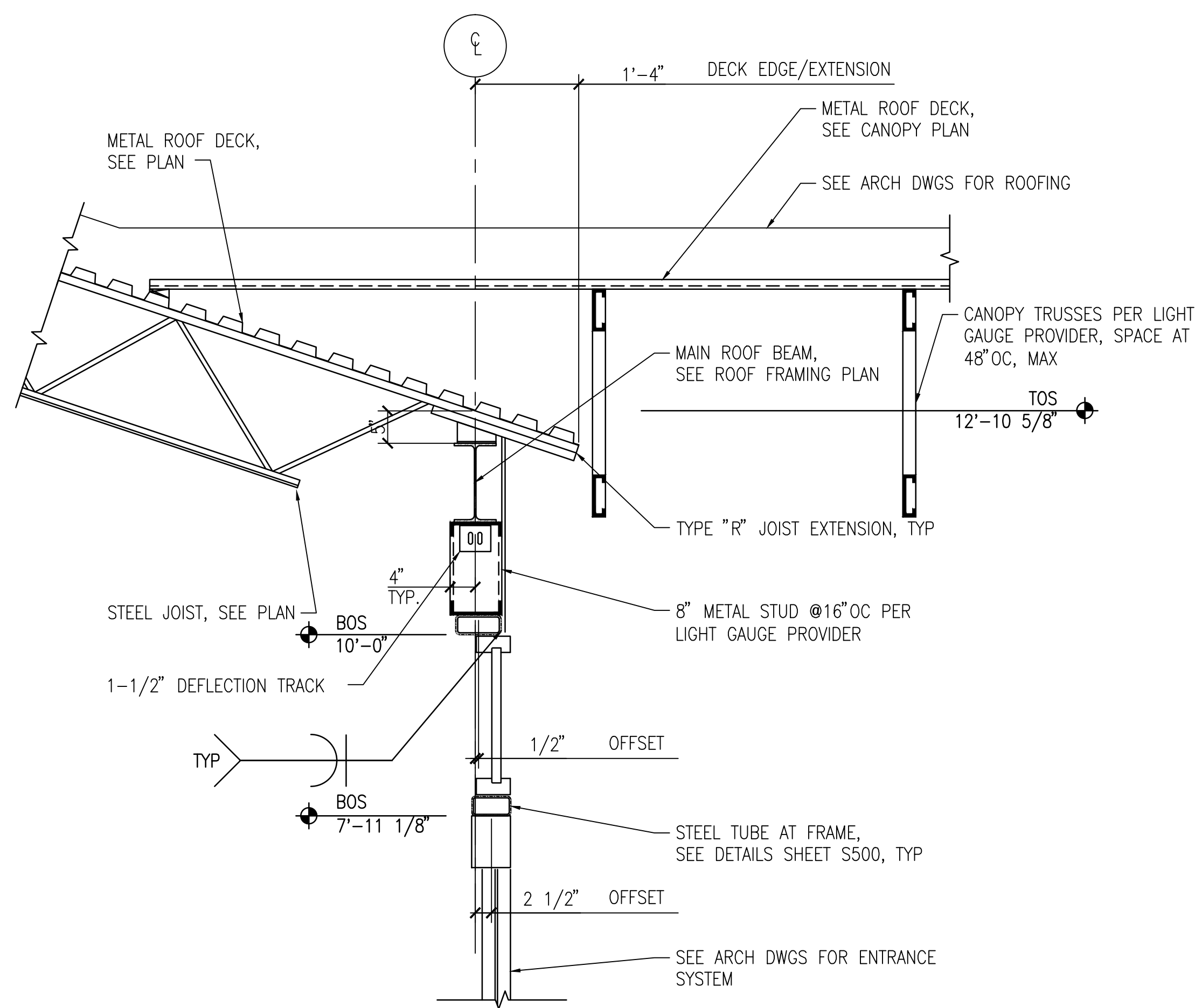


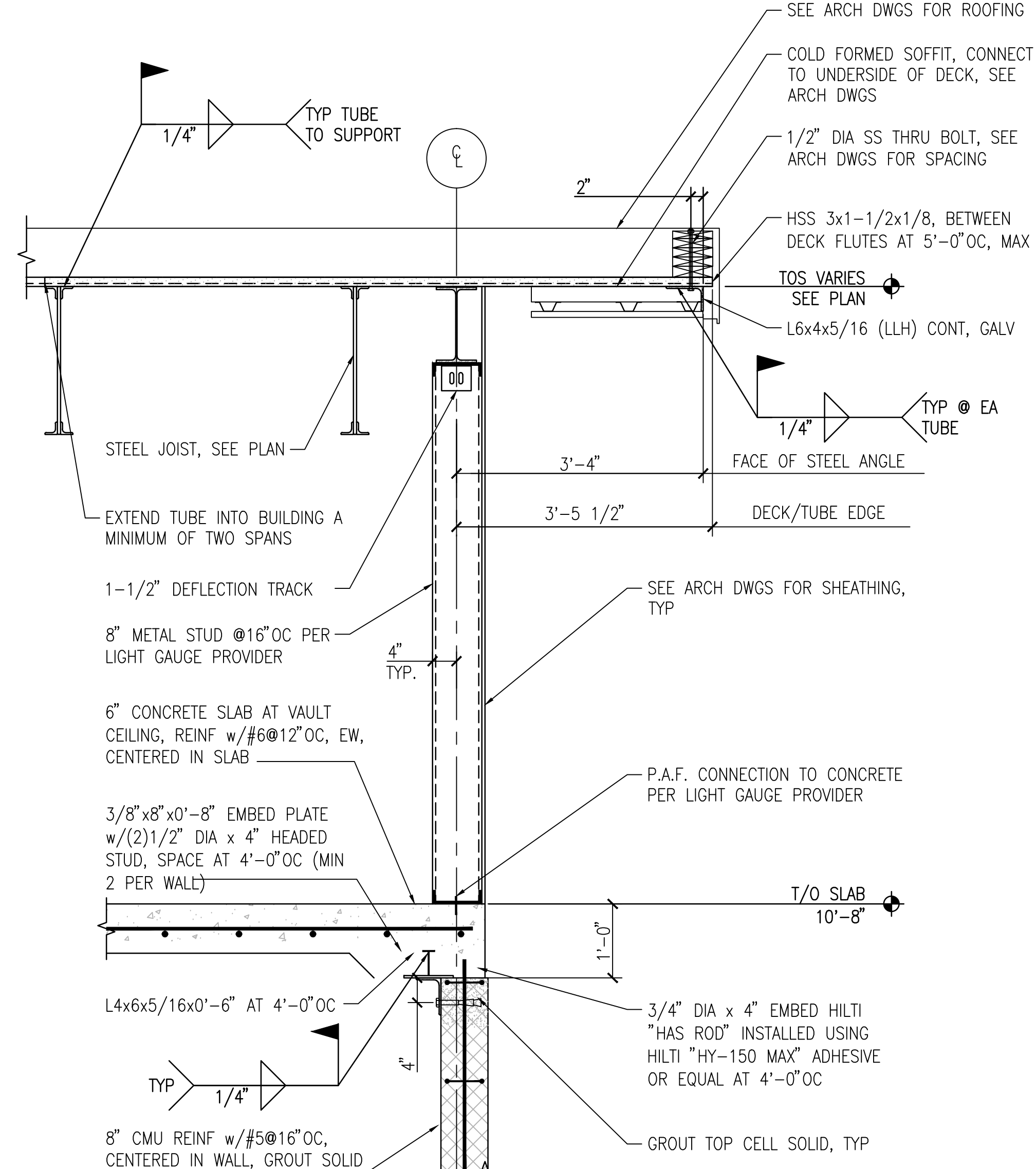
three inches = one foot
one and one half inches = one foot
one inch = one foot
three quarters inch = one foot
one half inch = one foot
three eighths inch = one foot
one quarter inch = one foot
one eighth inch = one foot
one eighth inch = one foot



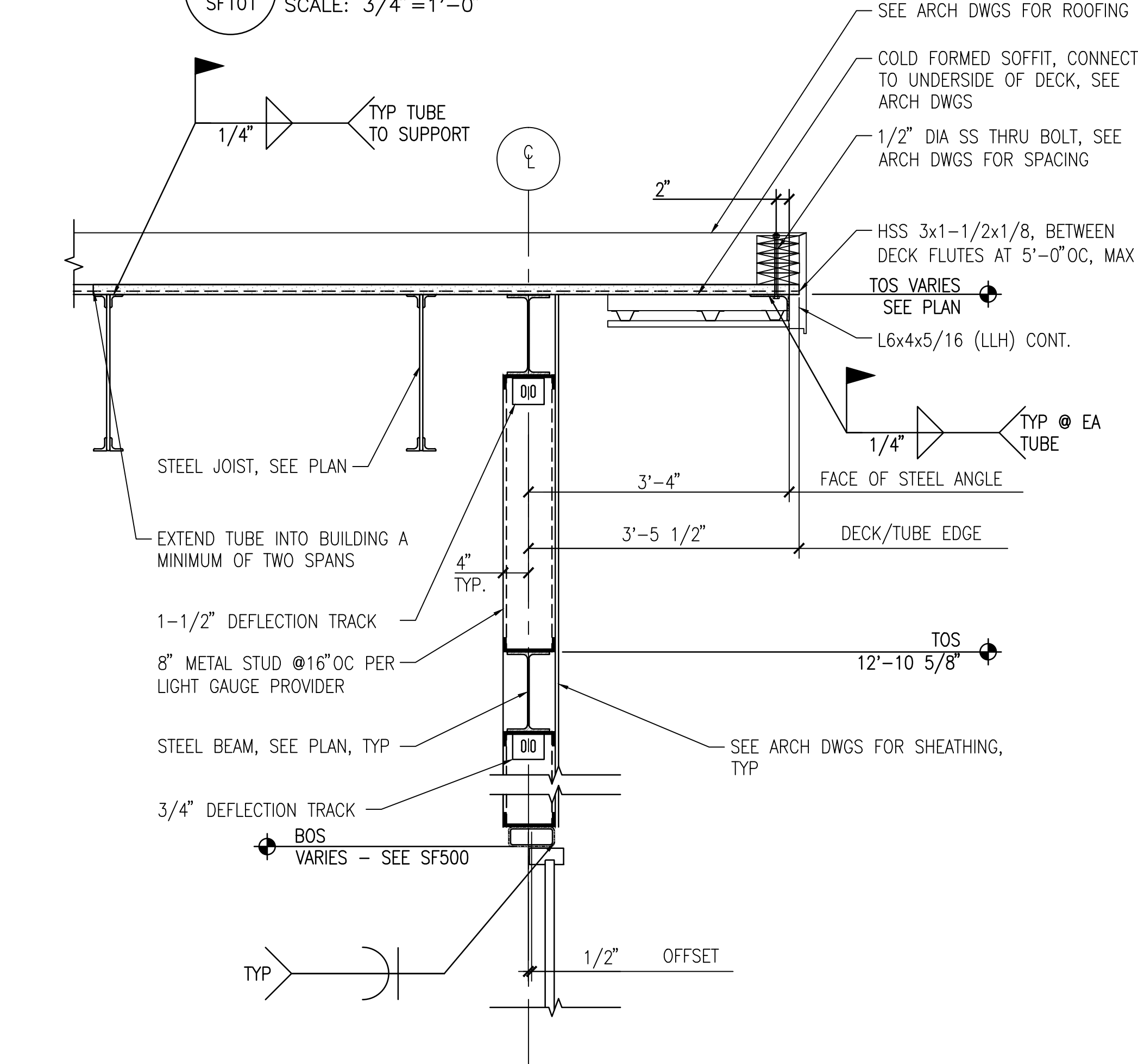
1 ROOF SECTION AT EXTERIOR WALL
SF101
SCALE: 3/4"=1'-0"



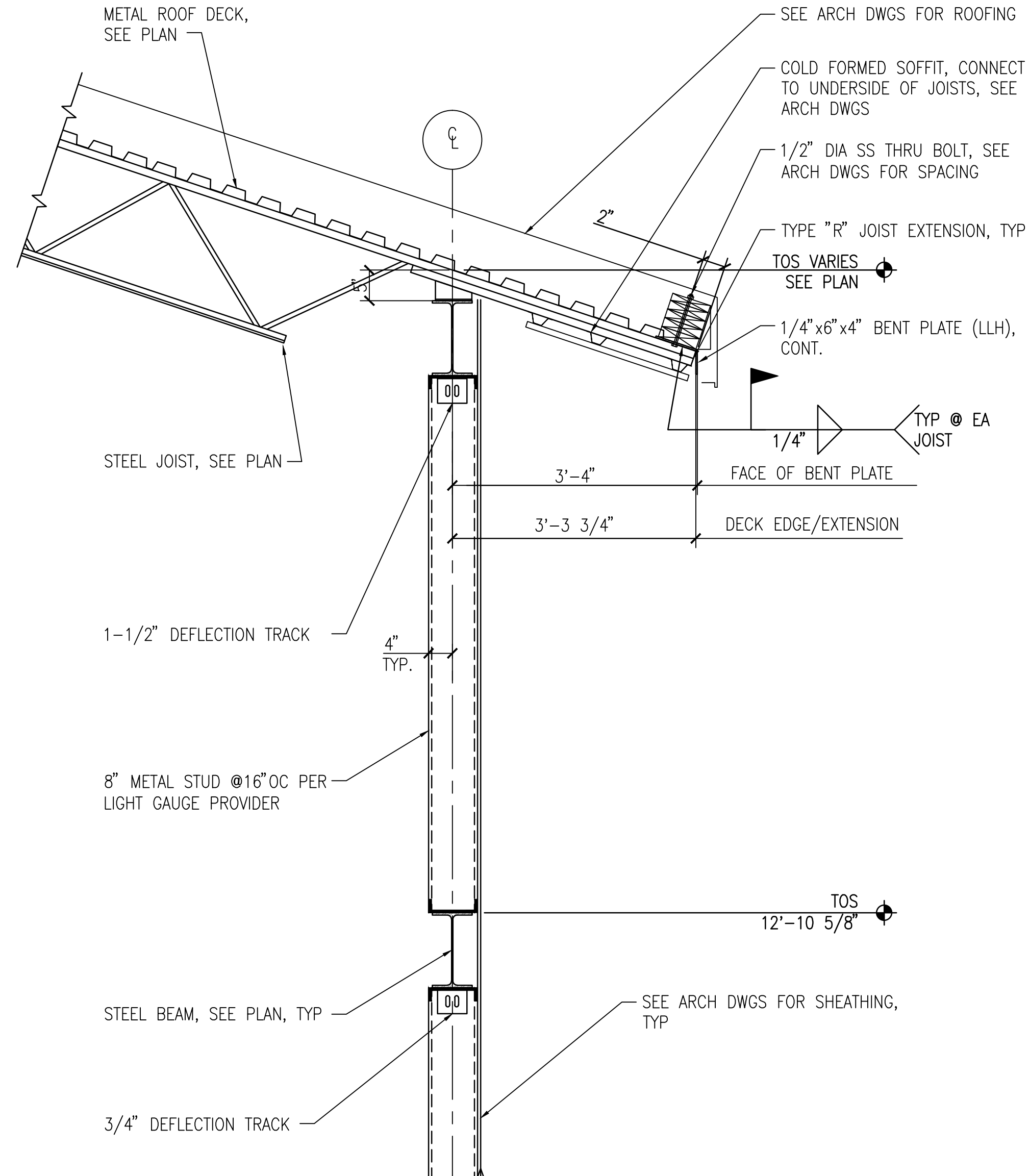
4 ROOF SECTION AT ENTRANCE - FRAME #1
SF101
SCALE: 3/4"=1'-0"



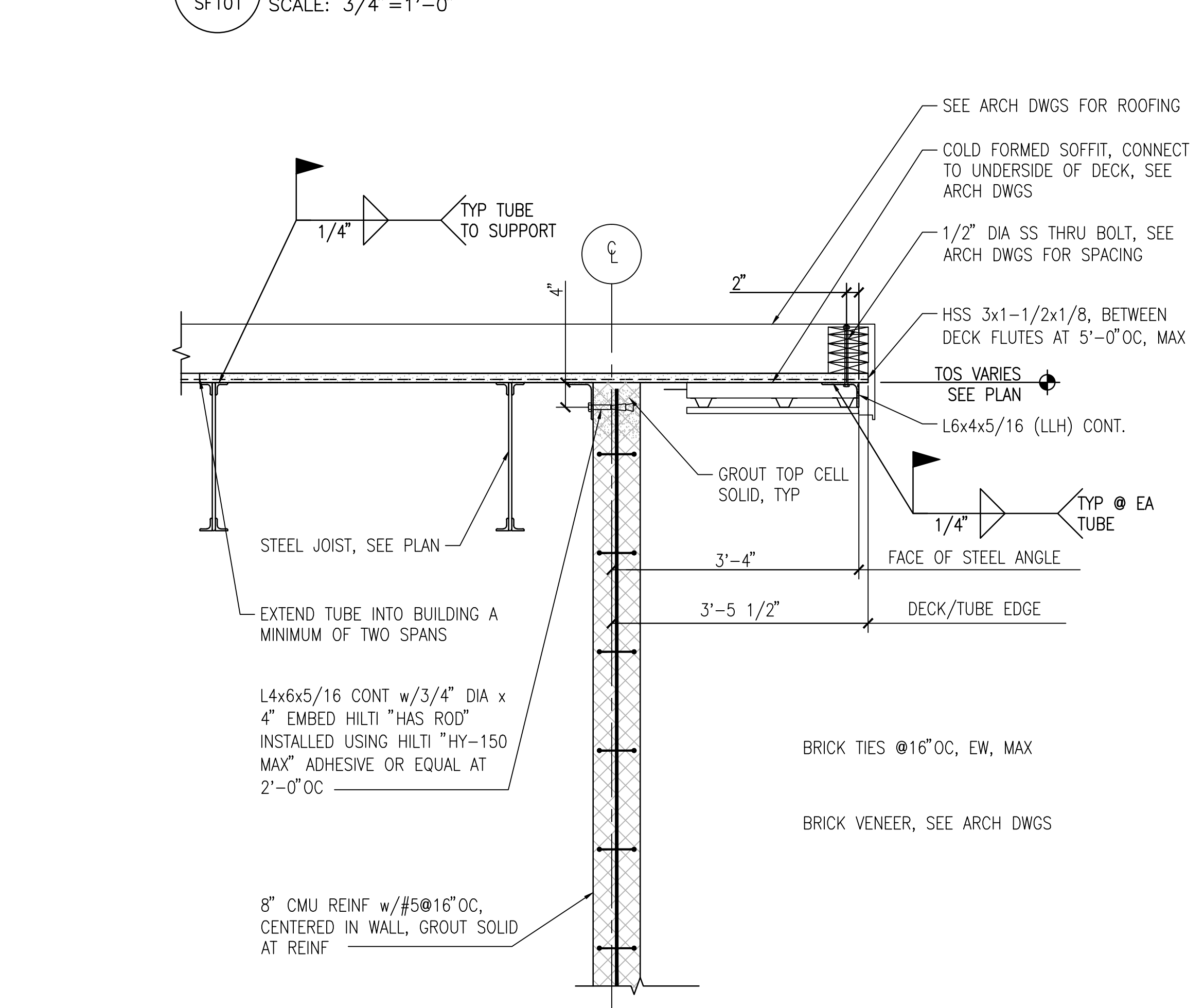
2 ROOF SECTION AT VAULT WALL
SF101
SCALE: 3/4"=1'-0"



5 ROOF SECTION AT EXTERIOR WALL - FRAMES #2, #3, #4, #6, #7, #8
SF101
SCALE: 3/4"=1'-0"





3 ROOF SECTION AT EXTERIOR WALL
SF101
SCALE: 3/4"=1'-0"



6 ROOF SECTION AT CMU WALL
SF101
SCALE: 3/4"=1'-0"

FINAL SUBMISSION / FULLY SPRINKLERED

		CONSULTANTS:				ARCHITECT/ENGINEERS:		Drawing Title ROOF FRAMING SECTIONS		Project Title CONSTRUCT VA OUTPATIENT CLINIC, PANAMA CITY		Project Number 520-326		Office of Construction and Facilities Management 			
		CIVIL: KENNETH HORNE & ASSOCIATES 7201 NORTH 9TH AVENUE, STE. 6 PENSACOLA, FLORIDA 32504 PH: (850) 471-9005 FX: (850) 471-0093		COMM/DS: SCHMIDT CONSULTING GROUP, INC. 40 S. PALAFOX PLACE, STE. 300 PENSACOLA, FLORIDA 32502 PH: (850) 438-0050 FX: (850) 432-8631		 BES DESIGN/BUILD, LLC 766 Middle St, Fairhope, AL 36532 Phone: 251.990.5778 Fax: 251.990.3716		Approved Project Director		Building Number -		Drawing Number SF401 Dwg. 12 of 17					
		LANDSCAPE ARCHITECT: CSA GROUP, INC. 6300 PICCADILLY SQUARE DRIVE MOBILE, ALABAMA 36609 PH: (251) 344-4023 FX: (251) 344-4052		SURVEYORS: KOI TECHNOLOGIES, INC. 10401 HIGHLAND MANOR DRIVE, SUITE 120 TAMPA, FLORIDA 33610 PH: (813) 740-2300				Location PANAMA CITY, FLORIDA		Date APRIL 2013		Checked NB				Drawn NB/KM	
Revisions:		Date															