

three inches = one foot

one and one half inches = one foot

one inch = one foot

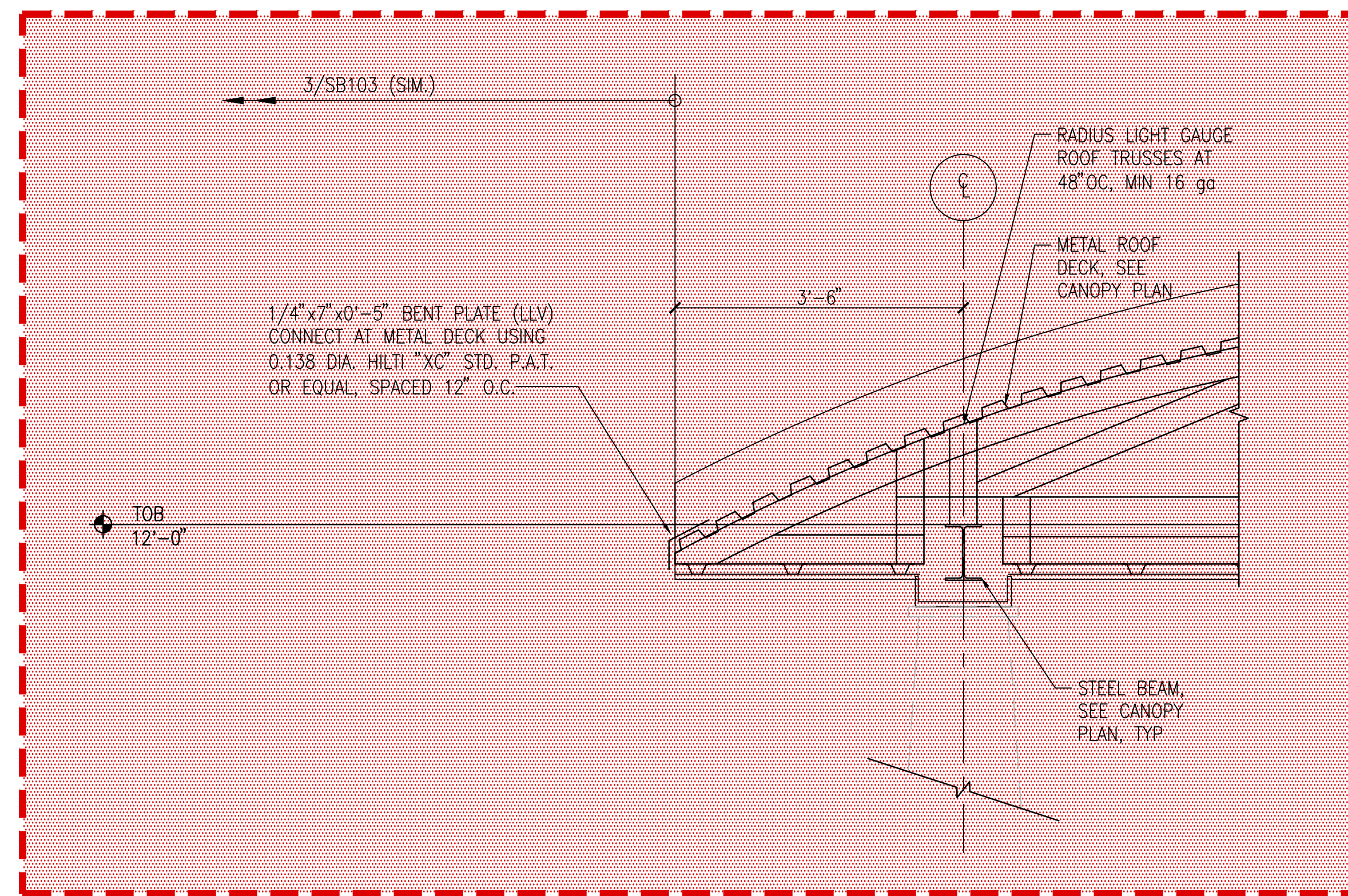
three quarters inch = one foot

one half inch = one foot

three eighths inch = one foot

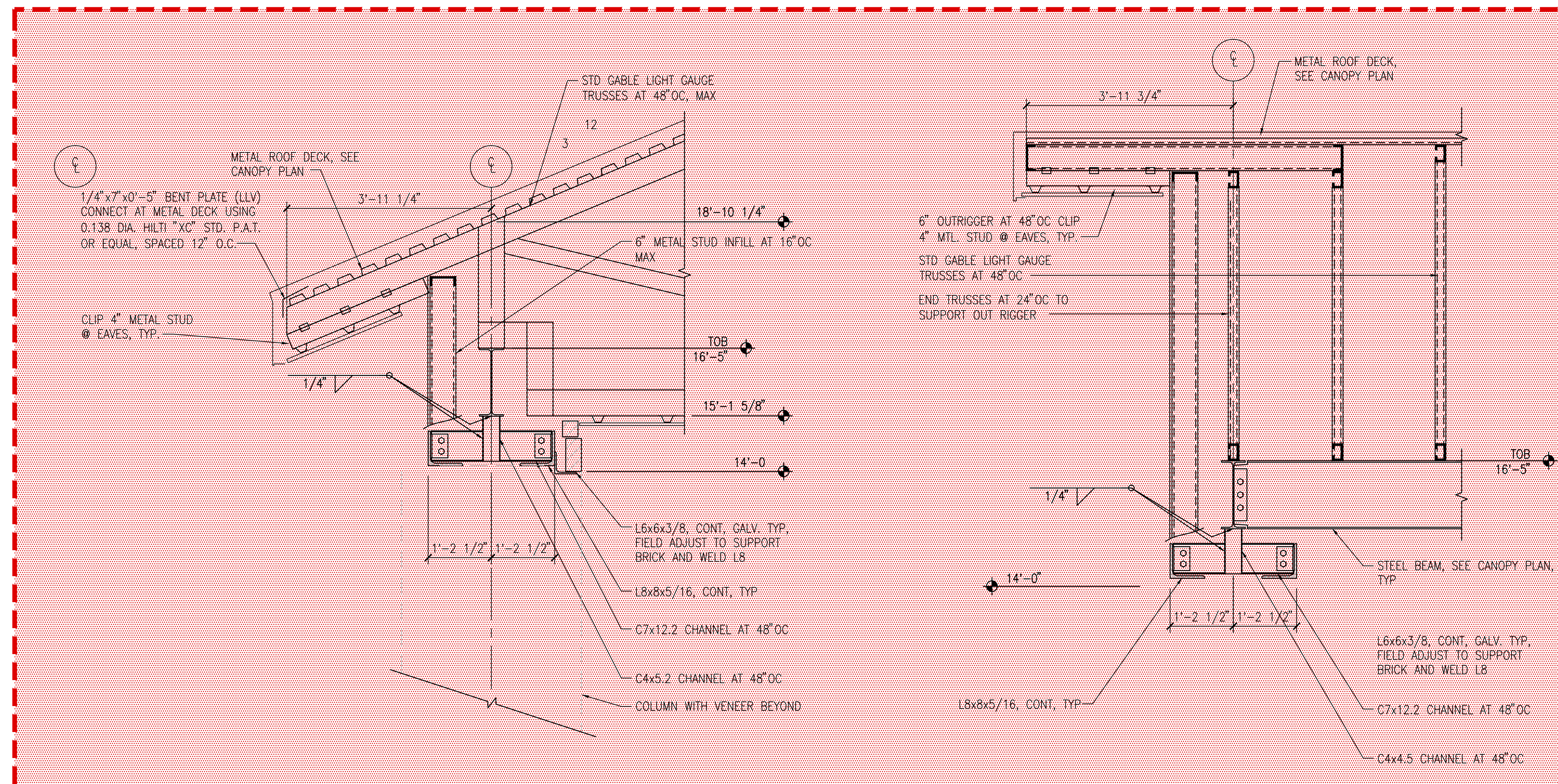
one quarter inch = one foot

one eighth inch = one foot



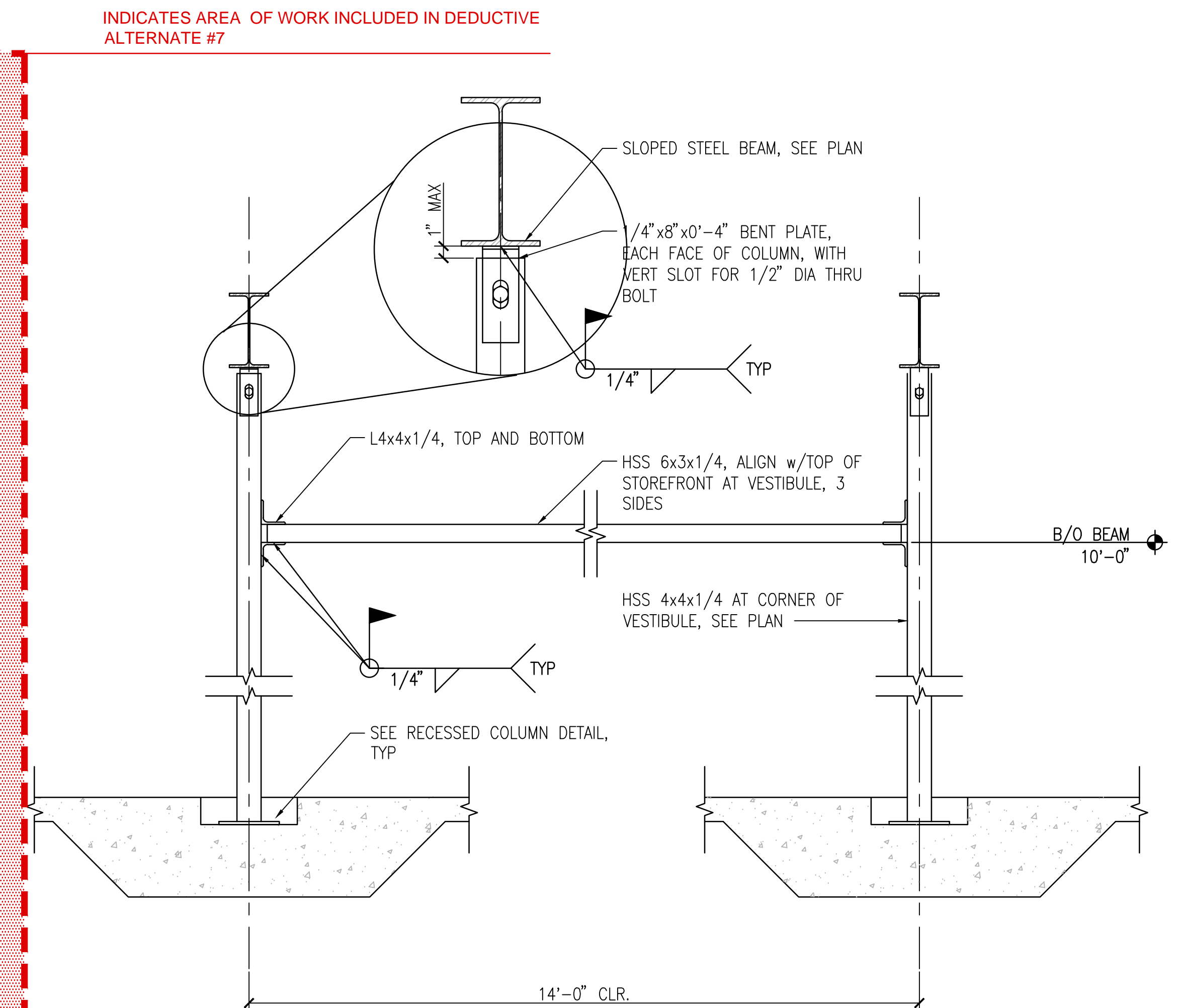
INDICATES AREA OF WORK INCLUDED IN DEDUCTIVE
ALTERNATE #7

3 ROOF SECTION AT COVERED WALK
SB103 SCALE: 3/4" = 1'-0"






4 ROOF SECTION AT CANOPY
SB103 SCALE: 3/4" = 1'-0"

5 ROOF SECTION AT COVERED DROP OFF
SB103 SCALE: 3/4" = 1'-0"



6 SECTION AT VESTIBULE
SF101 SCALE: 3/4" = 1' - 0"
FINAL SUBMISSION / FULLY SPRINKLERED

SCALE: 3/4"=1'-0"
FINAL SUBMISSION / FULLY SPRINKLERED

		CONSULTANTS:				ARCHITECT/ENGINEERS:		<div>Drawing Title CANOPY FRAMING SECTIONS</div> <div>Approved Project Director</div>		<div>Project Title CONSTRUCT VA OUTPATIENT CLINIC, PANAMA CITY</div> <div>Location PANAMA CITY, FLORIDA</div> <div>Date APRIL 2018</div>		<div>Project Number 520-326</div> <div>Building Number -</div> <div>Drawing Number SF403 Dwg. 14 of 17</div>		<div>Office of Construction and Facilities Management</div> <div> Department of Veterans Affairs</div>			
		<div>CIVIL: KENNETH HORNE & ASSOCIATES 7201 NORTH 9TH AVENUE, STE. 6 PENSACOLA, FLORIDA 32504 PH: (850) 471-9005 FX: (850) 471-0093</div> <div>LANDSCAPE ARCHITECT: CSA GROUP, INC. 6300 PROBABLY SQUARE DRIVE MOBILE, ALABAMA 36609 PH: (251) 344-6023 FX: (251) 344-4052</div>		<div>COMM/DS: SCHMIDT CONSULTING GROUP, INC. 40 S. PALMFOX PLACE, STE. 300 PENSACOLA, FLORIDA 32502 PH: (850) 438-0050 FX: (850) 432-8631</div> <div>SURVEYORS: KCI TECHNOLOGIES, INC. 10401 HIGHLAND MANOR DRIVE, SUITE 120 TAMPA, FLORIDA 33610 PH: (813) 740-2300</div>		<div></div>		<div></div> <div>BES DESIGN/BUILD, LLC 766 Middle St, Fairhope, AL 36532 Phone: 251.990.5778 Fax: 251.990.3716</div>									
Revisions:		Date															