[illegible]

CONSULTANTS:

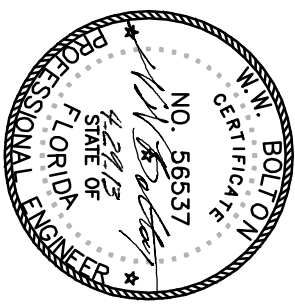
CML:
 KENNETH HORNE & ASSOCIATES
 7201 NORTH 9TH AVENUE, STE. 6
 PENSACOLA, FLORIDA 32504
 PH: (850) 471-9005
 FX: (850) 471-0093

LANDSCAPE ARCHITECT:
 CSA GROUP, INC.
 6300 PICCADILLY SQUARE DRIVE
 MOBILE, ALABAMA 36609
 PH: (251) 344-4023
 FX: (251) 344-4052

SURVEYORS:
KCI TECHNOLOGIES, INC.
10401 HIGHLAND MANOR DRIVE, SUITE 120
TAMPA, FLORIDA 33610
PH: (813) 740-2300

10401 HIGHLAND MANOR DRIVE, SUITE 120
TAMPA, FLORIDA 33610
PH: (813) 740-2300

10401 HIGHLAND MANOR DRIVE, SUITE 120
TAMPA, FLORIDA 33610
PH: (813) 740-2300



ARCHITECT/ENGINEERS:



BES DESIGN/BUILD, LLC
Middle St, Fairhope, AL 36532
251.990.5778 Fax: 251.990.3716

Drawing Title
**PLUMBING PLAN
OVERALL LAYOUT**

Project Title
**CONSTRUCT VA OUTPATIENT
CLINIC, PANAMA CITY**

Project Number	520-326
Building Number	

Project Number	520-326
Building Number	

Project Number	520-326
Building Number	

PANAMA CITY, FLORIDA	
Date	Checked
APRIL 2013	WWB

PANAMA CITY, FLORIDA	
Date	Checked
APRIL 2013	WWB

PANAMA CITY, FLORIDA	
Date	Checked
APRIL 2013	WWB

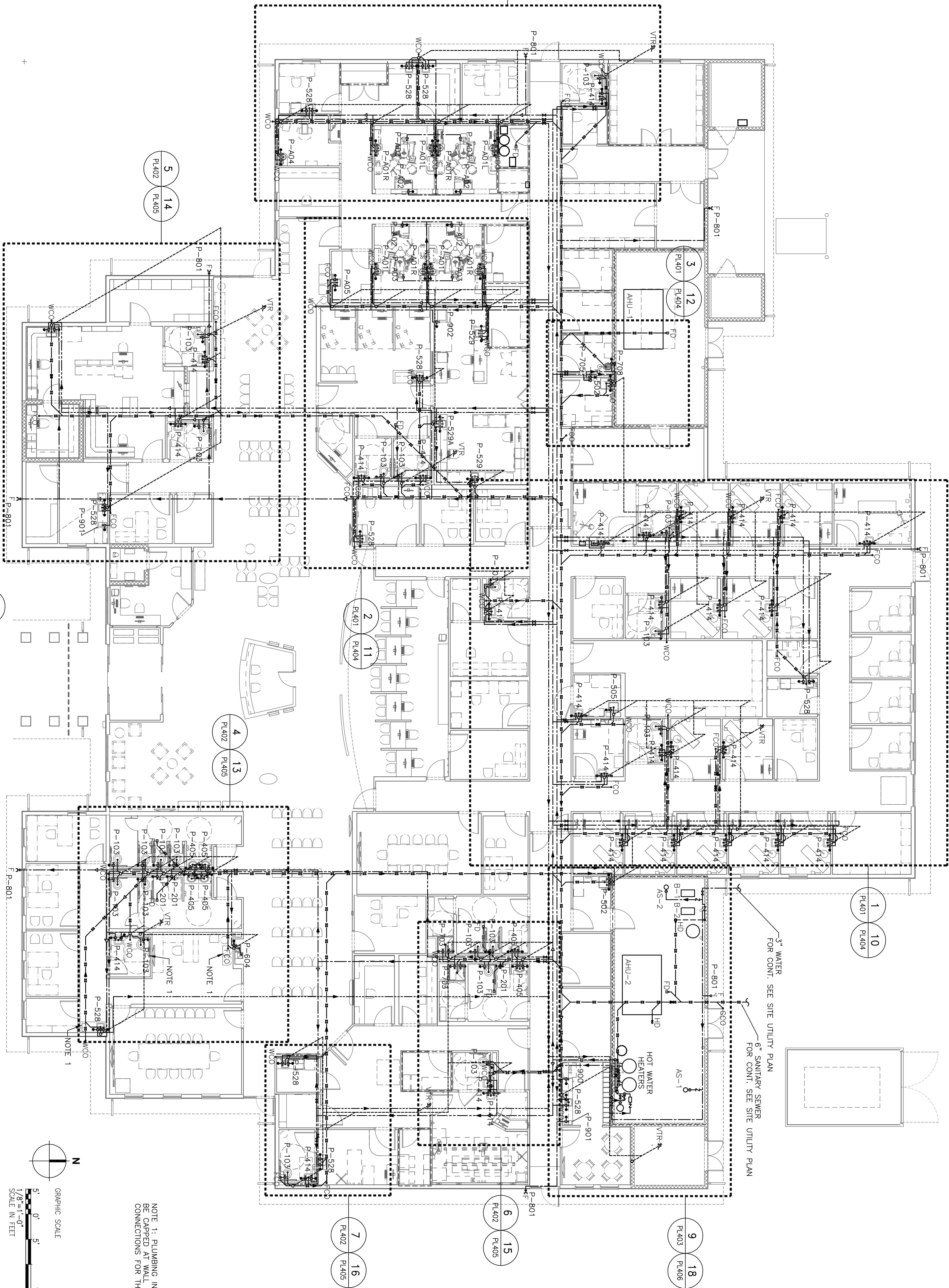
PANAMA CITY, FLORIDA	
Date	Checked
APRIL 2013	WWB

PANAMA CITY, FLORIDA	
Date	Checked
APRIL 2013	WWB

PANAMA CITY, FLORIDA	
Date	Checked
APRIL 2013	WWB

PANAMA CITY, FLORIDA	
Date	Checked
APRIL 2013	WWB

PANAMA CITY, FLORIDA	
Date	Checked
APRIL 2013	WWB



OVERALL PLUMBING PLAN

NOTE 1: PLUMBING IN ROOMS A-22 AND A-23 WILL BE CAPPED AT WALL FOR SEWER AND POTABLE WATER CONNECTIONS FOR THE DEDUCTIVE ALTERNATE.