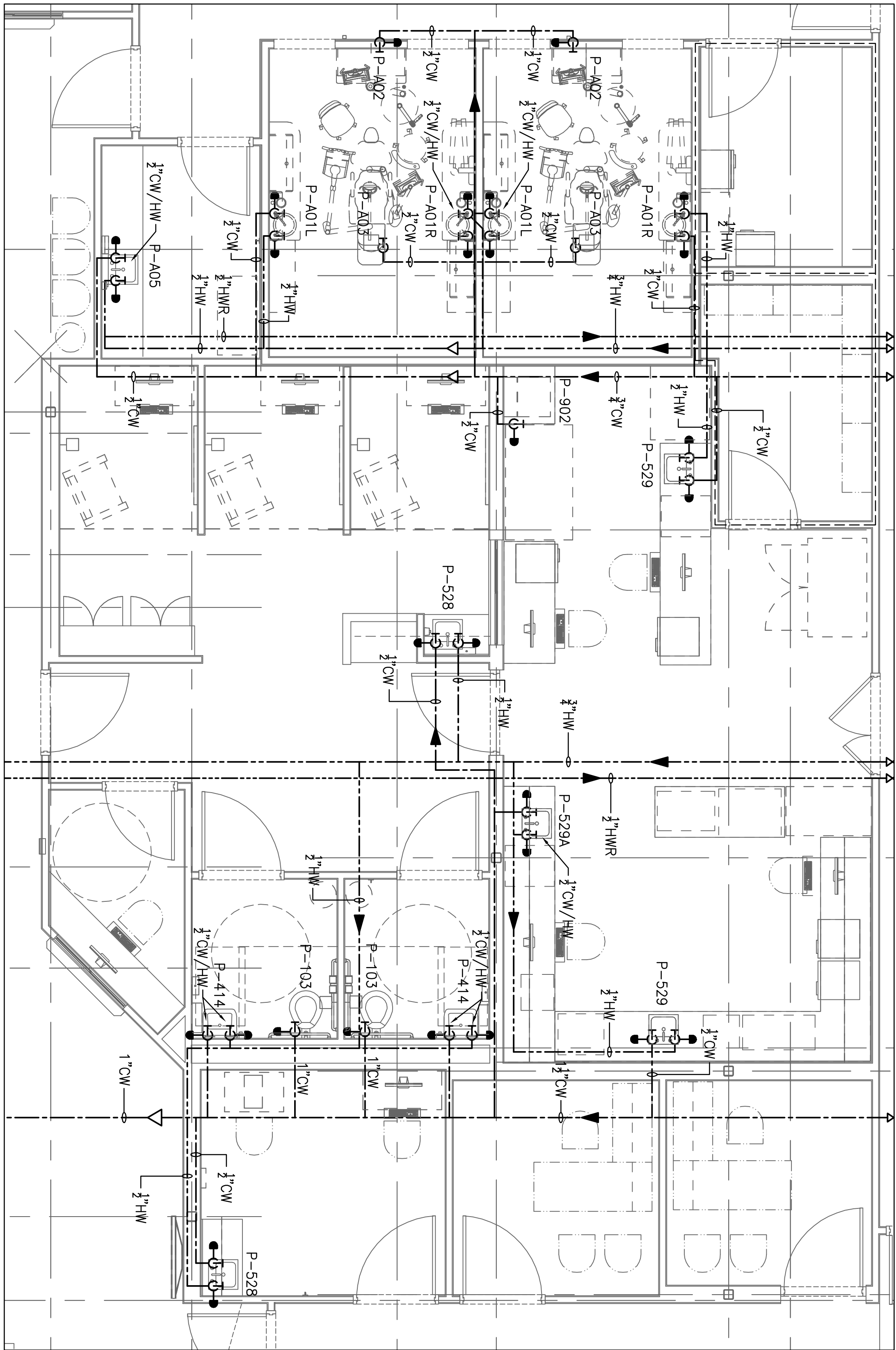
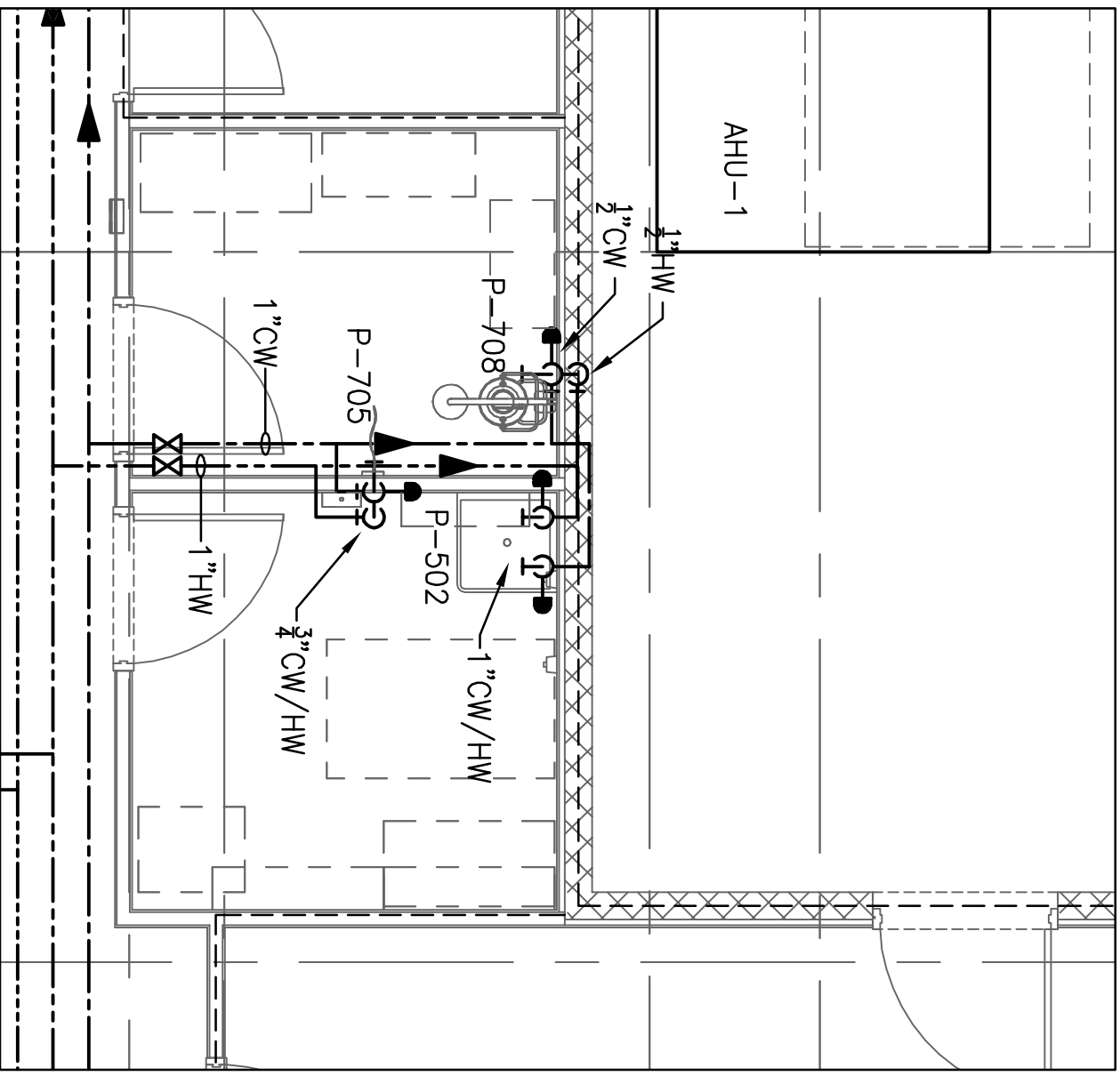


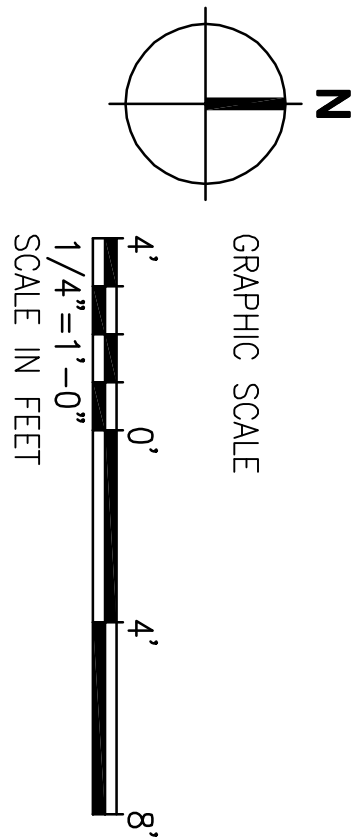
1 ENLARGED PLUMBING PLAN
SCALE: 1/4"=1'-0"



2 ENLARGED PLUMBING PLAN
SCALE: 1/4"=1'-0"



3 ENLARGED PLUMBING PLAN
SCALE: 1/4"=1'-0"



FINAL SUBMISSION / FULLY SPRINKLERED

CONSULTANTS:		ARCHITECT/ENGINEERS:	
7201 NORTH 9TH AVENUE, STE. 6 FORT LAUDERDALE, FL 33304 PR. (850) 471-0093		BES DESIGN/BUILD, LLC 766 Middle St., Fairhope, AL 36532 Phone: 251.990.5778 Fax: 251.990.3716	
LANDSCAPE ARCHITECT: 6500 PROUDLY SQUARE DRIVE FORT LAUDERDALE, FL 33309 PR. (231) 344-4023		SURVEYORS: 10401 HIGHLAND AVENUE DRIVE, SUITE 120 FORT LAUDERDALE, FL 33304 PR. (613) 746-2300	
CONSULTING GROUP, INC. 40 S. PALMER BLVD., STE. 300 FORT LAUDERDALE, FL 33302 PR. (850) 432-8831		BES DESIGN/BUILD, LLC 766 Middle St., Fairhope, AL 36532 Phone: 251.990.5778 Fax: 251.990.3716	
DATE		DRAWING TITLE	
		ENLARGED PLUMBING PLANS	
PROJECT TITLE		PROJECT NUMBER	
CLINIC, PANAMA CITY		520-326	
LOCATION		BUILDING NUMBER	
PANAMA CITY, FLORIDA		-	
DATE		DRAWING NUMBER	
APRIL 2018		PL401	
DESIGNED BY		DRAWN BY	
WMS		JLL	
CHECKED BY		DATE	
		Dwg. 4 of 16	
OFFICE OF CONSTRUCTION AND FACILITIES MANAGEMENT		DEPARTMENT OF VETERANS AFFAIRS	