

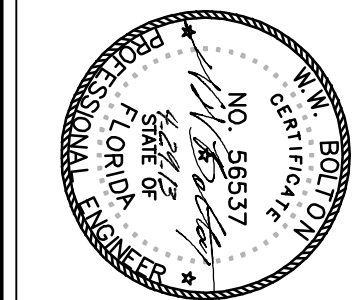
Revision	Date

CONSULTANTS:

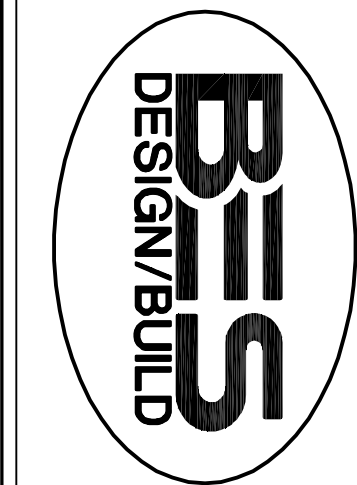
CONSULTANTS:
KENTH HORN & ASSOCIATES
7201 NORTH 9TH AVENUE, STE. 6
DENVER, CO 80231
PH: (303) 471-8000
FX: (303) 471-0093
LANDSCAPE ARCHITECT:
6500 PROUDLY SQUARE DRIVE
DENVER, CO 80221
PH: (303) 344-4039
FX: (303) 344-4032

CONSULTANTS:

CONSULTANTS:
KENTH HORN & ASSOCIATES
7201 NORTH 9TH AVENUE, STE. 6
DENVER, CO 80231
PH: (303) 471-8000
FX: (303) 471-0093
LANDSCAPE ARCHITECT:
6500 PROUDLY SQUARE DRIVE
DENVER, CO 80221
PH: (303) 344-4039
FX: (303) 344-4032

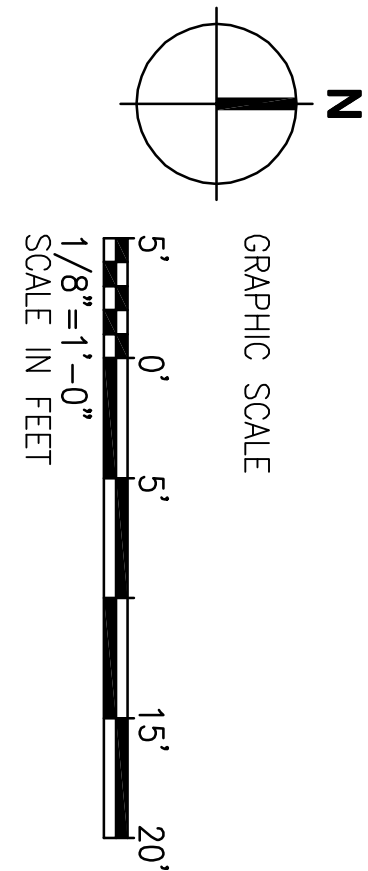
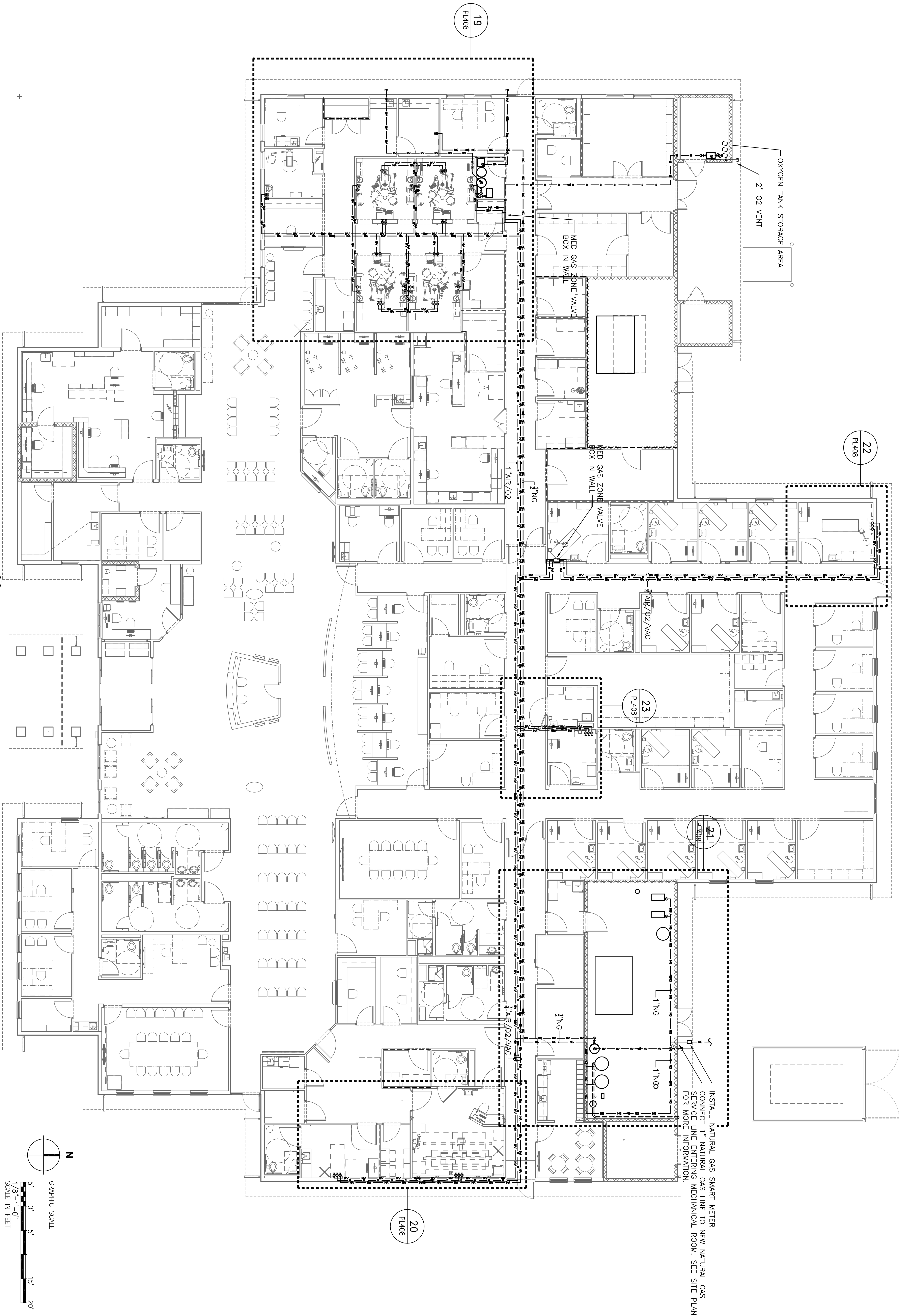


ARCHITECT/ENGINEERS:

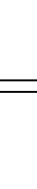


BES DESIGN/BUILD, LLC
766 Middle St., Fairhope, AL 36532
Phone: 251.990.5778 Fax: 251.990.3716

1 OVERALL PLUMBING PLAN - CLINICAL GAS



FINAL SUBMISSION / FULLY SPRINKLERED

Drawing Title PIPING PLAN, CLINICAL GAS OVERALL LAYOUT			Project Title CONSTRUCT VA OUTPATIENT CLINIC, PANAMA CITY			Project Number 520-326 Building Number —			Office of Construction and Facilities Management					
Approved Project Director			Location PANAMA CITY, FLORIDA			Drawing Number PL407			 Department of Veterans Affairs					
			Date APRIL 2018			Checked WMB						Drawn JLL		

Office of
Construction
and Facilities
Management

