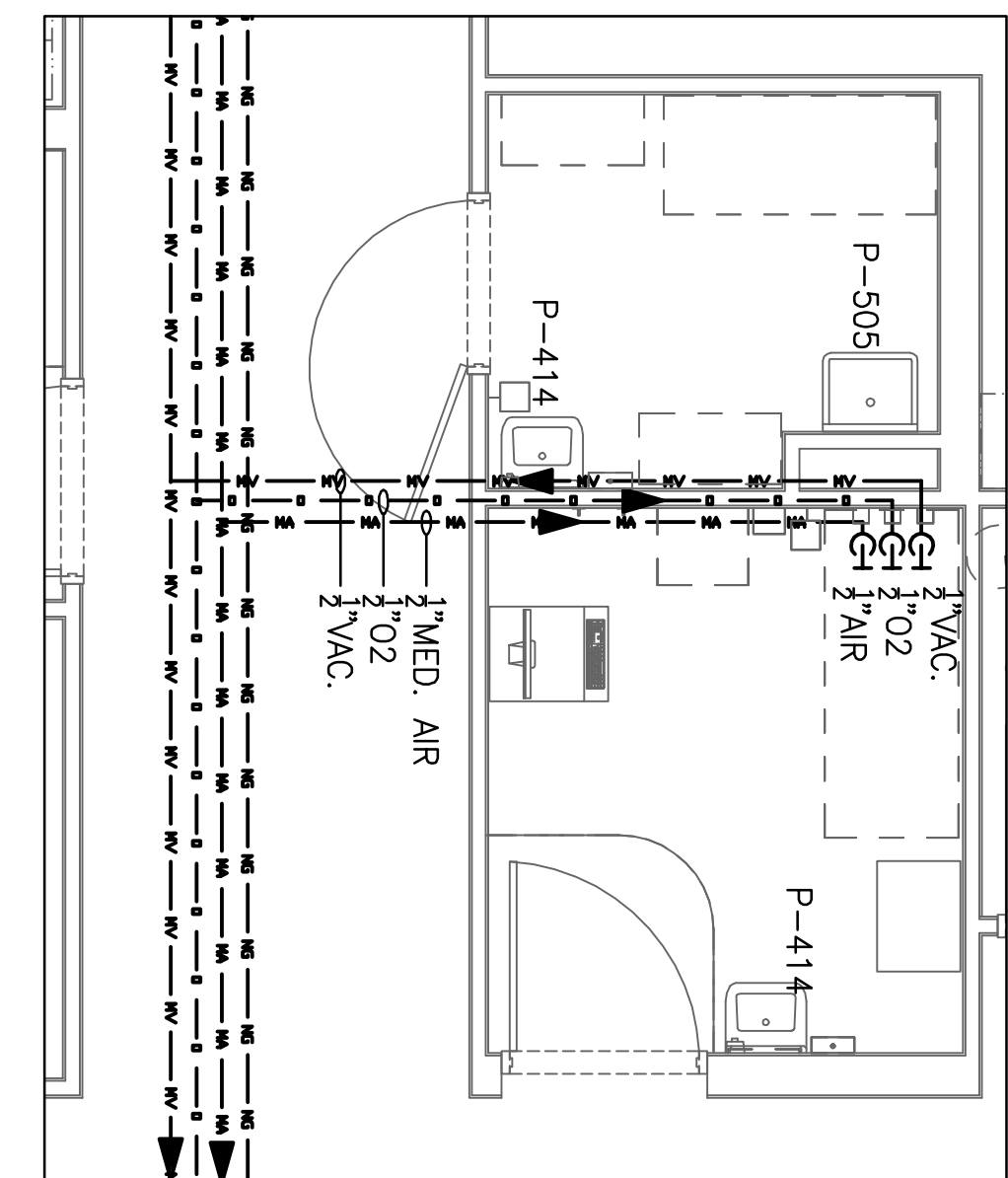
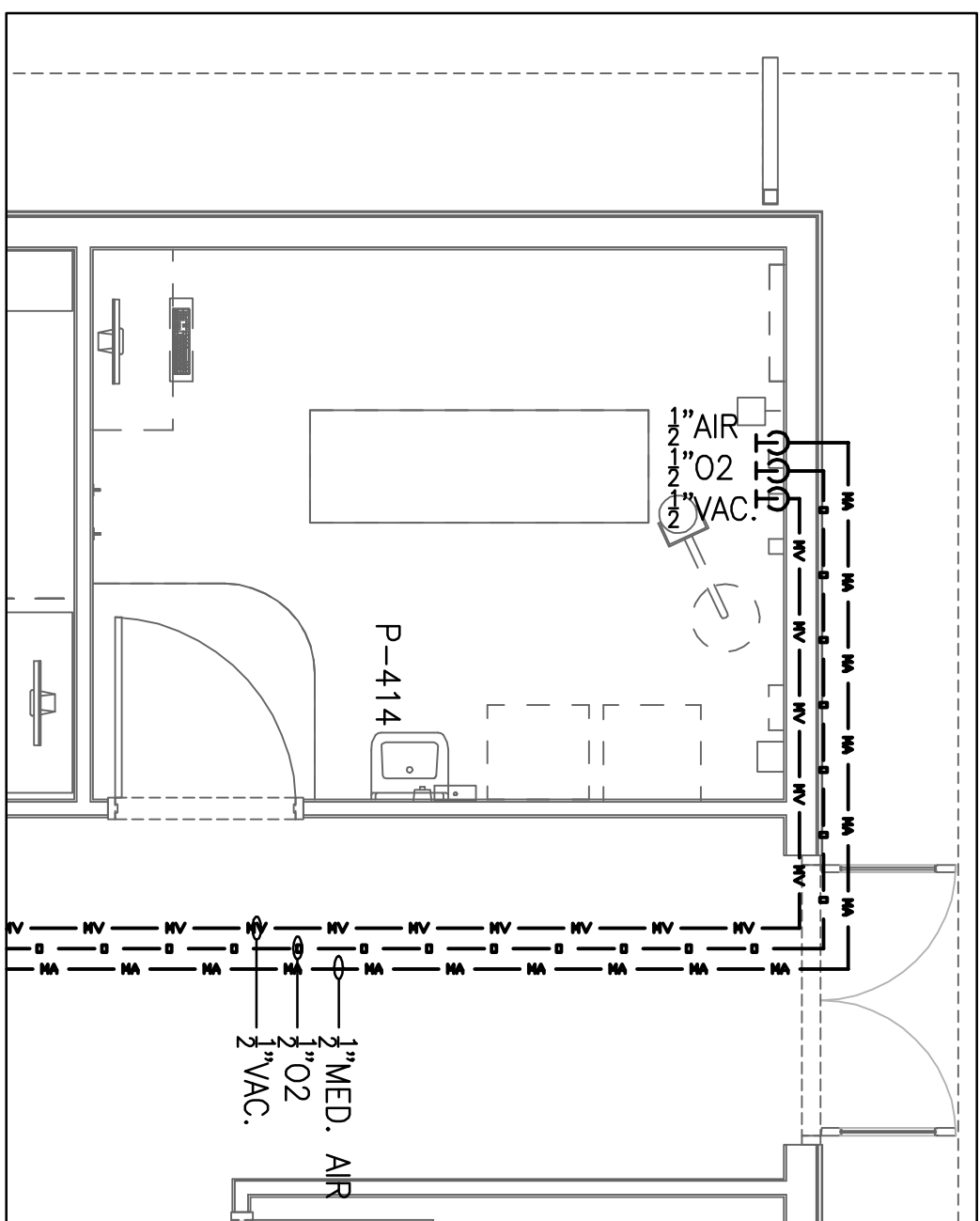


19 ENLARGED CLINICAL GAS PLAN
PL407 SCALE: 1/4"=1'-0"

- NOTES:
- MECHANICAL ROOM (B27) TO BE INSULATED WITH SOUND ATTENUATION INSULATION ON THE WALLS AND CEILING.
 - GAS TO BE REDUCED TO 6" W.C. TO BUNSON BURNER.

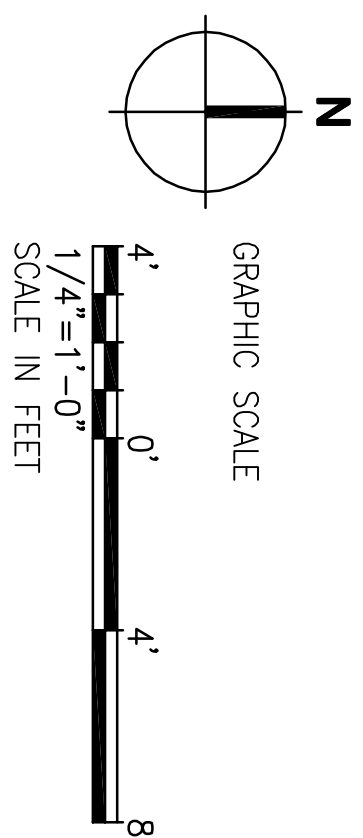


22 ENLARGED CLINICAL GAS PLAN
PL407 SCALE: 1/4"=1'-0"

23 ENLARGED CLINICAL GAS PLAN
PL407 SCALE: 1/4"=1'-0"

ROOM NO.	CONSOLE NO.	SERVICE	SIZE	CONN.	CONN. PT.*	CONSOLE MODEL NO.
B11, B12 B13, B14	P-A01L	COLD/HOT WATER VACUUM AIR	1/2" WALL 1/2" WALL 1"	2"		A-DEC MODEL 5531.72
B11, B12 B13, B14	P-A01R	SS DRAIN COLD/HOT WATER MEDICAL VACUUM MEDICAL AIR	1 1/2" WALL 1/2" WALL 1/2" WALL 1"	2"		A-DEC MODEL 5531.72
B11, B12 B13, B14	P-A02	SS DRAIN COLD/HOT WATER MEDICAL VACUUM	1 1/2" WALL 1/2" WALL 1"	2"		A-DEC MODEL 5580.42
B11, B12 B13, B14	P-A03	SS DRAIN COLD WATER MEDICAL AIR	1 1/2" WALL 1/2" FLOOR 1"	2"		A-DEC MODEL 511
B04	P-A04	COLD/HOT WATER MEDICAL VACUUM MEDICAL AIR SS DRAIN	1/2" WALL 1/2" WALL 1"	2"		A-DEC MODEL 5531-30
B08	NA	NATURAL GAS	1 1/2" WALL	1"		NA
C15	NA	OXYGEN	1/2" WALL	1"		NA
C27	NA	MEDICAL AIR	1/2" WALL	1"		NA
D07	NA	MEDICAL AIR	1/2" WALL	1"		NA
D09	NA	OXYGEN	1/2" WALL	1"		NA
		MEDICAL AIR	1/2" WALL	1"		NA

- NOTES:
- CONTRACTOR TO COORDINATE ROUGH-IN LOCATION WITH VA FURNISHED AND INSTALLED EQUIPMENT.
 - *CONN. PT. REPRESENTS THE DISTANCE TO THE CONNECTION POINT PERPENDICULAR FROM THE WALL/FLOOR SURFACE AND IS BASED ON MODEL INFORMATION SHOWN.
 - BASIS OF DESIGN IS NOT INTENDED TO LIMIT EQUIPMENT SELECTION. PROVIDE INDOOR EQUIPMENT FOR BUNSON BURNER, GAS REQUIREMENTS AND QUALITY.
 - MEDICAL GAS MUST BE CERTIFIED PER NFPA-99 REQUIREMENTS.



LEGEND	
---	MEDICAL AIR
- - - -	MEDICAL VACUUM
- - - -	OXYGEN
- - - -	NATURAL GAS

21 ENLARGED CLINICAL GAS PLAN
PL407 SCALE: 1/4"=1'-0"

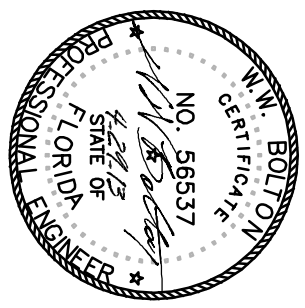
NOTE 1: GAS SUPPLY TO BE REDUCED TO 8" W.C. AT EACH APPLIANCE.

CONSULTANTS:

7201 NORTH 9TH AVENUE, STE. 6
DENVER, CO 80231
PH: (303) 471-8003
FX: (303) 471-0093

LANDSCAPE ARCHITECT:
6500 PROUDLY SQUARE DRIVE
DENVER, CO 80221
PH: (303) 344-4023

ARCHITECT/ENGINEERS:



BES DESIGN/BUILD, LLC
766 Middle St., Fairhope, AL 36532
Phone: 251.990.5778 Fax: 251.990.3716

Drawing Title
ENLARGED PIPING PLANS
CLINICAL GAS

Project Title
CONSTRUCT VA OUTPATIENT
CLINIC, PANAMA CITY

Project Number
520-926
Building Number
-

Location
PANAMA CITY, FLORIDA

Date
APRIL 2018

Checked
WMB

Drawn
JLL

Drawing Number
PL408

Dwg. # of 16

Office of
Construction
and Facilities
Management
Department of
Veterans Affairs