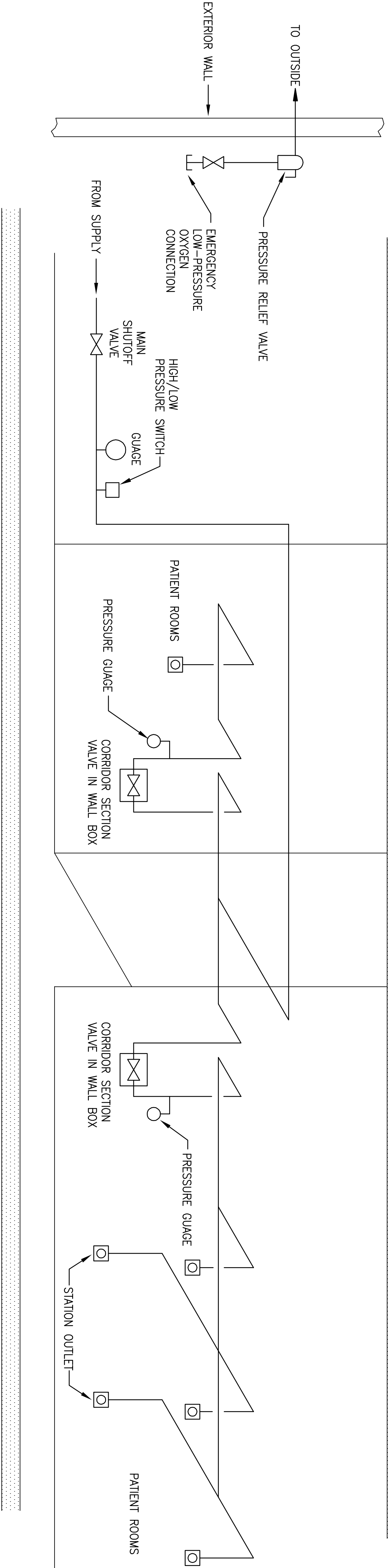


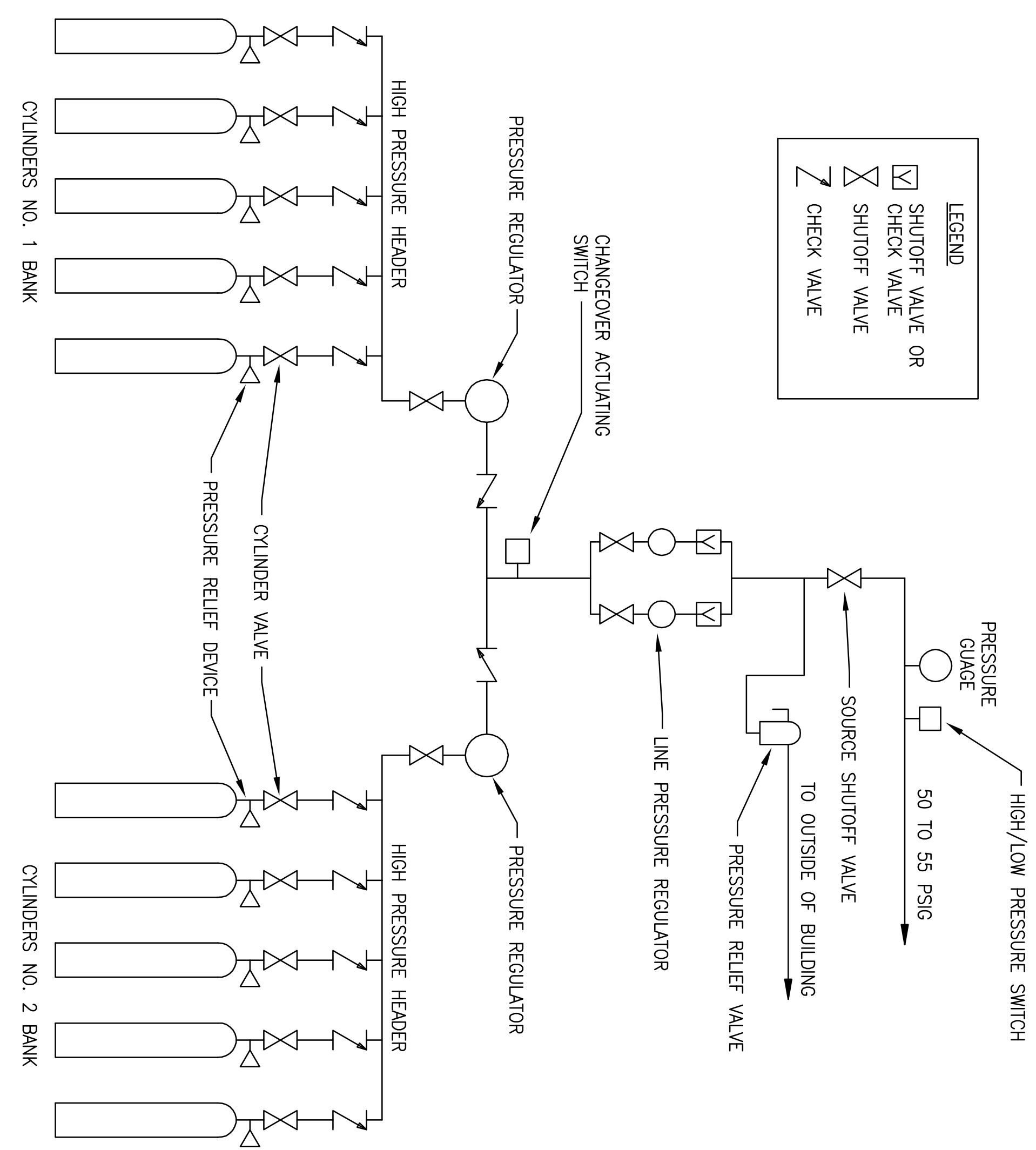
1 TYPICAL LEVEL 1 VACUUM SOURCE

SCALE: NONE



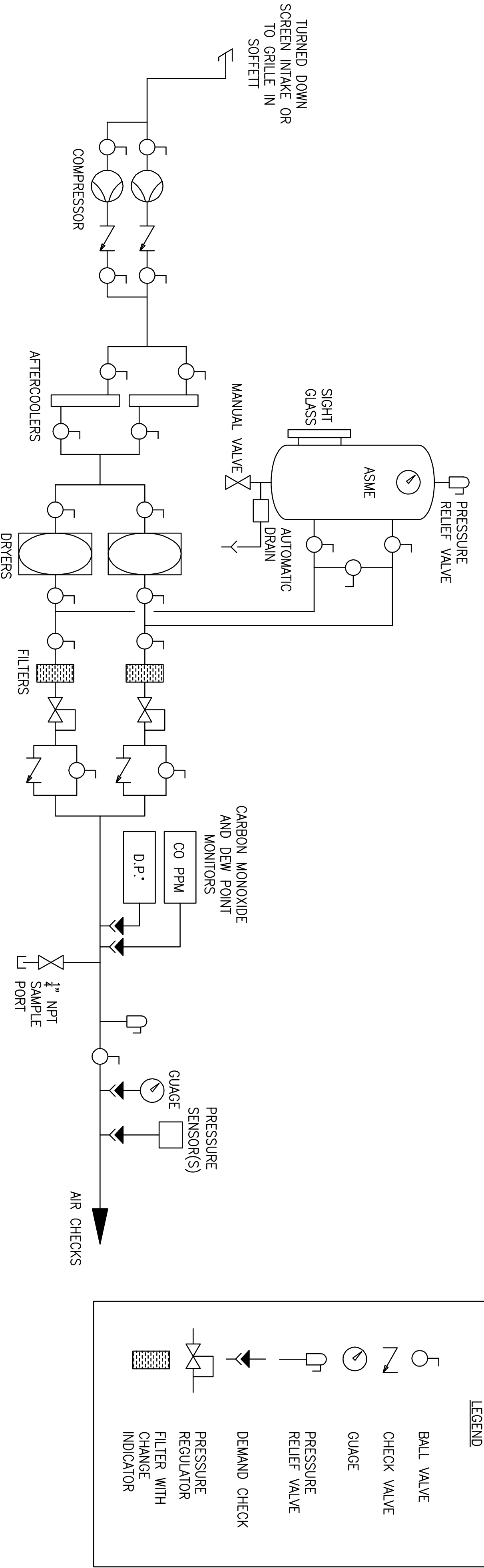
2 MEDICAL GAS SYSTEM LAYOUT DETAIL

SCALE: NONE



3 OXYGEN SUPPLY DETAIL

SCALE: NONE



4 TYPICAL DUPLEX MEDICAL AIR COMPRESSOR SYSTEM

SCALE: NONE

Project Title <b>CONSTRUCT VA OUTPATIENT CLINIC, PANAMA CITY</b>		Project Number <b>520-326</b>	
Location <b>PANAMA CITY, FLORIDA</b>		Building Number <b>-</b>	
Drawing Number <b>PL502</b>		Date <b>APRIL 2018</b>	
Checked <b>WMB</b>		Drawn <b>JLL</b>	
Dwg 13 of 16		Office of Construction and Facilities Management	

CONSULTANTS:		CONSULTANTS:	
7201 NORTH RHINE AVENUE, STE. 6 PANAMA CITY, FLORIDA 32404 PR. (850) 471-8005 PR. (850) 471-0093		7201 NORTH RHINE AVENUE, STE. 6 PANAMA CITY, FLORIDA 32404 PR. (850) 471-8005 PR. (850) 471-0093	
LANDSCAPE ARCHITECT: 6500 PROUDLY SQUARE DRIVE PANAMA CITY, FLORIDA 32409 PR. (251) 344-4023		LANDSCAPE ARCHITECT: 6500 PROUDLY SQUARE DRIVE PANAMA CITY, FLORIDA 32409 PR. (251) 344-4023	
SUPERVISOR: 10401 HIGHLAND JAVIER DRIVE, SUITE 120 PANAMA CITY, FLORIDA 32409 PR. (913) 749-2300		SUPERVISOR: 10401 HIGHLAND JAVIER DRIVE, SUITE 120 PANAMA CITY, FLORIDA 32409 PR. (913) 749-2300	
DATE		DATE	

ARCHITECT/ENGINEERS:		ARCHITECT/ENGINEERS:	
BES DESIGN/BUILD, LLC 766 Middle St., Fairhope, AL 36532 Phone: 251.990.5778 Fax: 251.990.3716		BES DESIGN/BUILD, LLC 766 Middle St., Fairhope, AL 36532 Phone: 251.990.5778 Fax: 251.990.3716	

FINAL SUBMISSION / FULLY SPRINKLERED