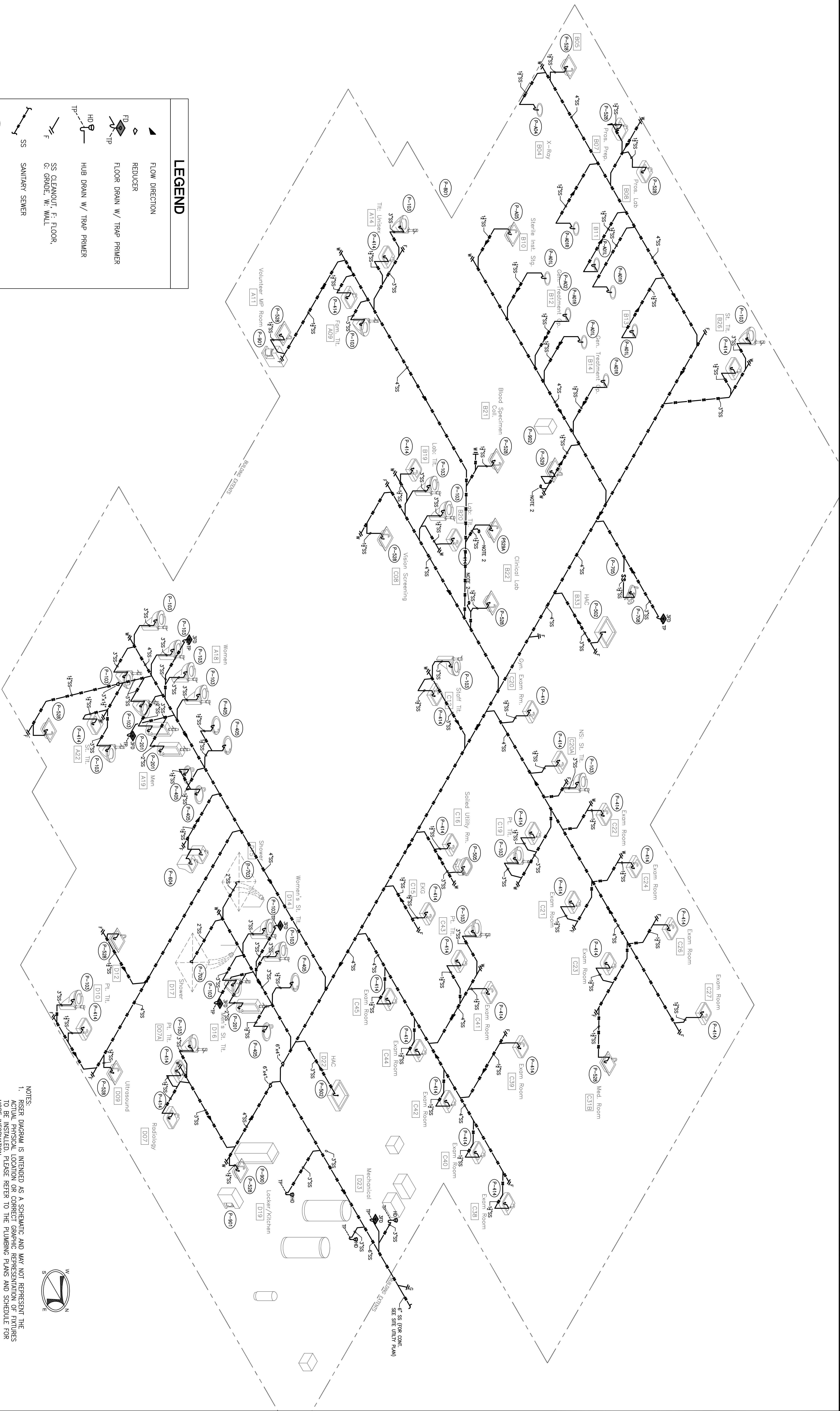


1 PLUMBING RISER DIAGRAM - SANITARY SEWER



- NOTES:
1. RISER DIAGRAM IS INTENDED AS A SCHEMATIC AND MAY NOT REPRESENT THE ACTUAL PHYSICAL LOCATION OR CORRECT GRAPHIC REPRESENTATION OF FIXTURES TO BE INSTALLED. PLEASE REFER TO THE PLUMBING PLANS AND SCHEDULE FOR MORE INFORMATION.
 2. INSTALL SECOND 1/2" SS SINK STUB-OUT FOR FUTURE EXPANSION AND CAP (TYP).
 3. ALL SINKS IN CLINICAL LAB (B22).
 4. USE WASTE WATER FROM LAUNDRY AS PRIMER FOR FLOOR DRAINS.
 5. SS CLEANOUTS TO BE INSTALLED EVERY 50 FEET AND IN TURNS OF 45° OR GREATER.

FINAL SUBMISSION / FULLY SPRINKLERED

Project Title PLUMBING RISER DIAGRAM SANITARY SEWER		Project Number 520-326	
Location PANAMA CITY, FLORIDA		Building Number -	
Date APRIL 2018		Drawing Number PL504	
Checked WMB		Drawn JLL	
Dwg 15 of 16		Office of Construction and Facilities Management	

CONSULTANTS:		CONSULTING ENGINEERS:	
7201 NORTH RIM AVENUE, STE. 6 PANAMA CITY, FLORIDA 32404 PH: (850) 471-8005 FX: (850) 471-0093		40 S. PALMWAY PLACE, STE. 300 PANAMA CITY, FLORIDA 32402 PH: (850) 438-0950 FX: (850) 432-8831	
LANDSCAPE ARCHITECT: 6300 PROUDLY SQUARE DRIVE PANAMA CITY, FLORIDA 32409 PH: (231) 344-4023 FX: (231) 344-4023		SUPERVISOR: 10401 HIGHLAND AVENUE DRIVE, SUITE 120 PANAMA CITY, FLORIDA 32409 PH: (913) 749-2500 FX: (913) 749-2500	

ARCHITECT/ENGINEERS:	
	
	
BES DESIGN/BUILD, LLC 766 Middle St., Fairhope, AL 36632 Phone: 251.990.5778 Fax: 251.990.3716	