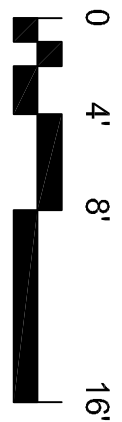
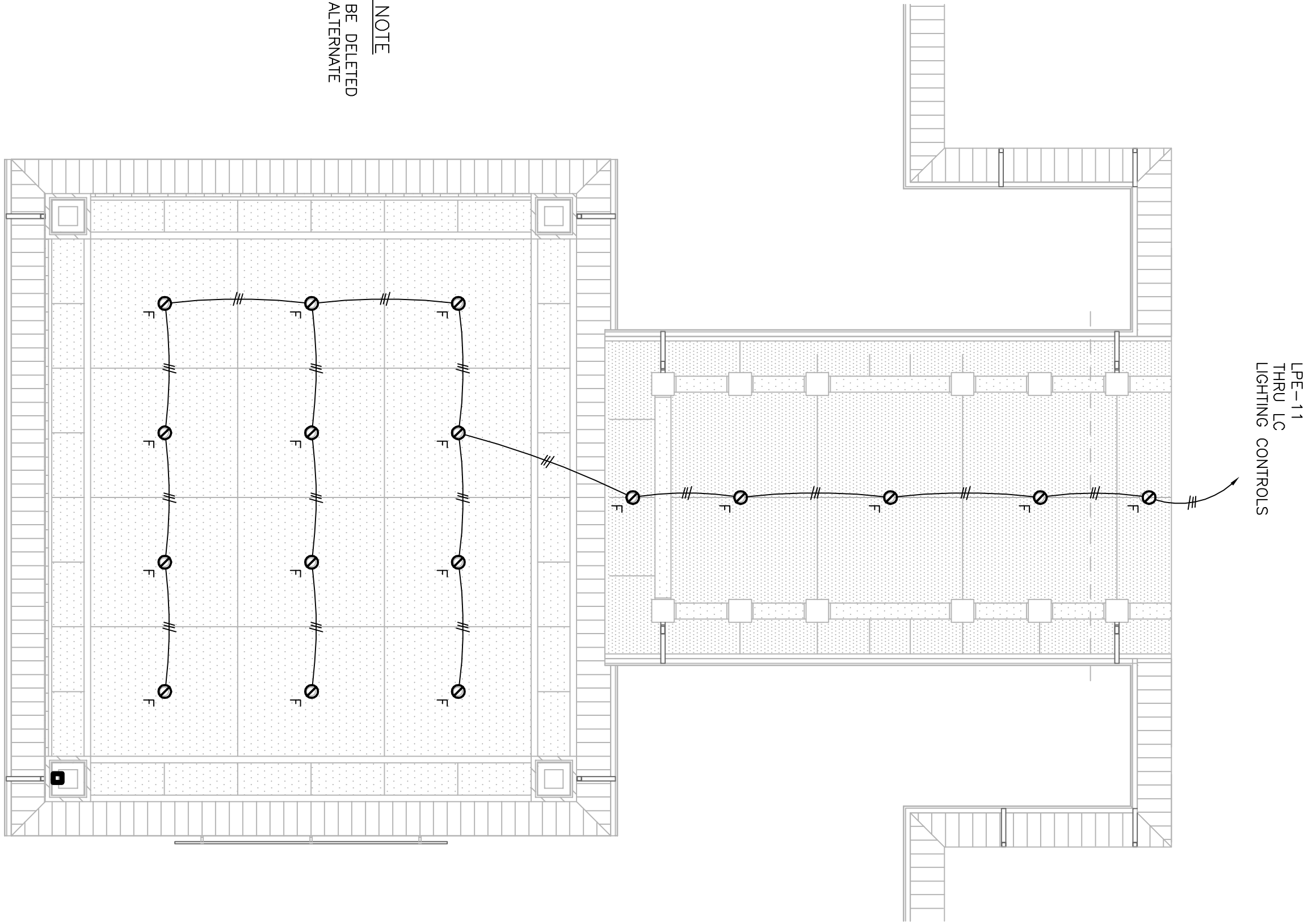


1
EL102
1/8"=1'-0"

LIGHTING PLAN

ALTERNATE #7 NOTE
ALL LIGHTING WILL BE DELETED
ON THE BASIS OF ALTERNATE
#7 IS ACCEPTED



SCALE: 1/8" = 1'-0"

FINAL SUBMISSION / FULLY SPRINKLERED

CONSULTANTS:		ARCHITECT/ENGINEERS:	
GUILD: KREMER, HENRI & ASSOCIATES 1000 N. GULF BLVD., SUITE 100 PENSACOLA, FLORIDA 32504 P: (850) 471-0093 F: (850) 471-0093		BES DESIGN/BUILD, LLC 766 Middle St. Fairhope, AL 36532 Phone: 251.990.5778 Fax: 251.990.3716	
COMM/DCS: SCOTT CONSULTING GROUP, INC. 1000 N. GULF BLVD., SUITE 100 PENSACOLA, FLORIDA 32502 P: (850) 452-5651 F: (850) 452-5651		Drawing Title CANOPY/WALKWAY LIGHTING PLAN	
LANDSCAPE ARCHITECT: CSA GROUP, INC. GUYARD DRIVE MOBILE, ALABAMA 36689 P: (251) 344-4023 F: (251) 344-4023		Approved Project Director	
DATE		Location PANAMA CITY, FLORIDA	
		Date APRIL 2013	
		Checked KDE	
		Drawn GWS	
		Project No. CONSTRUCT VA OUTPATIENT CLINIC, PANAMA CITY	
		Project Number 520-326	
		Building Number -	
		Drawing Number EL102	
		Dwg 6 of 19	
		Office of Construction and Facilities Management	
		Department of Veterans Affairs	