

WA FORM 08-0231

CONSULTANTS:

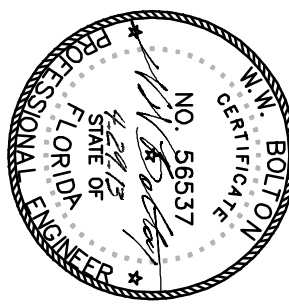
CIVIL:
KENNETH HORNE & ASSOCIATES
7201 NORTH 9TH AVENUE, STE. 6
PENSACOLA, FLORIDA 32504
PH: (850) 471-9005
FX: (850) 471-0093

LANDSCAPE ARCHITECT:
CSA GROUP, INC.
6300 PICCOLLIT SQUARE DRIVE
MOBILE, ALABAMA 36609
PH: (251) 344-4023
FX: (251) 344-4052

COMM./IDS:
SCHMIDT CONSULTING GROUP, INC.
40 S. PALFOX PLACE, STE. 300
PENSACOLA, FLORIDA 32502
PH: (850) 438-0050
FX: (850) 432-8631

SURVEYORS:
KCI TECHNOLOGIES, INC.
10401 HIGHLAND MANOR DRIVE, S
TAMPA, FLORIDA 33610
PH: (813) 740-2300

ARCHITECT/ENGINEERS:



BES DESIGN/BUILD, LLC
Middle St, Fairhope, AL 36532
251.990.5778 Fax: 251.990.3716

ENLARGED ROOMS POWER PLAN

Approved: Project Director

Project I/me

CONSTRUCT VA OUTPATIENT

CLINIC, PANAMA CITY

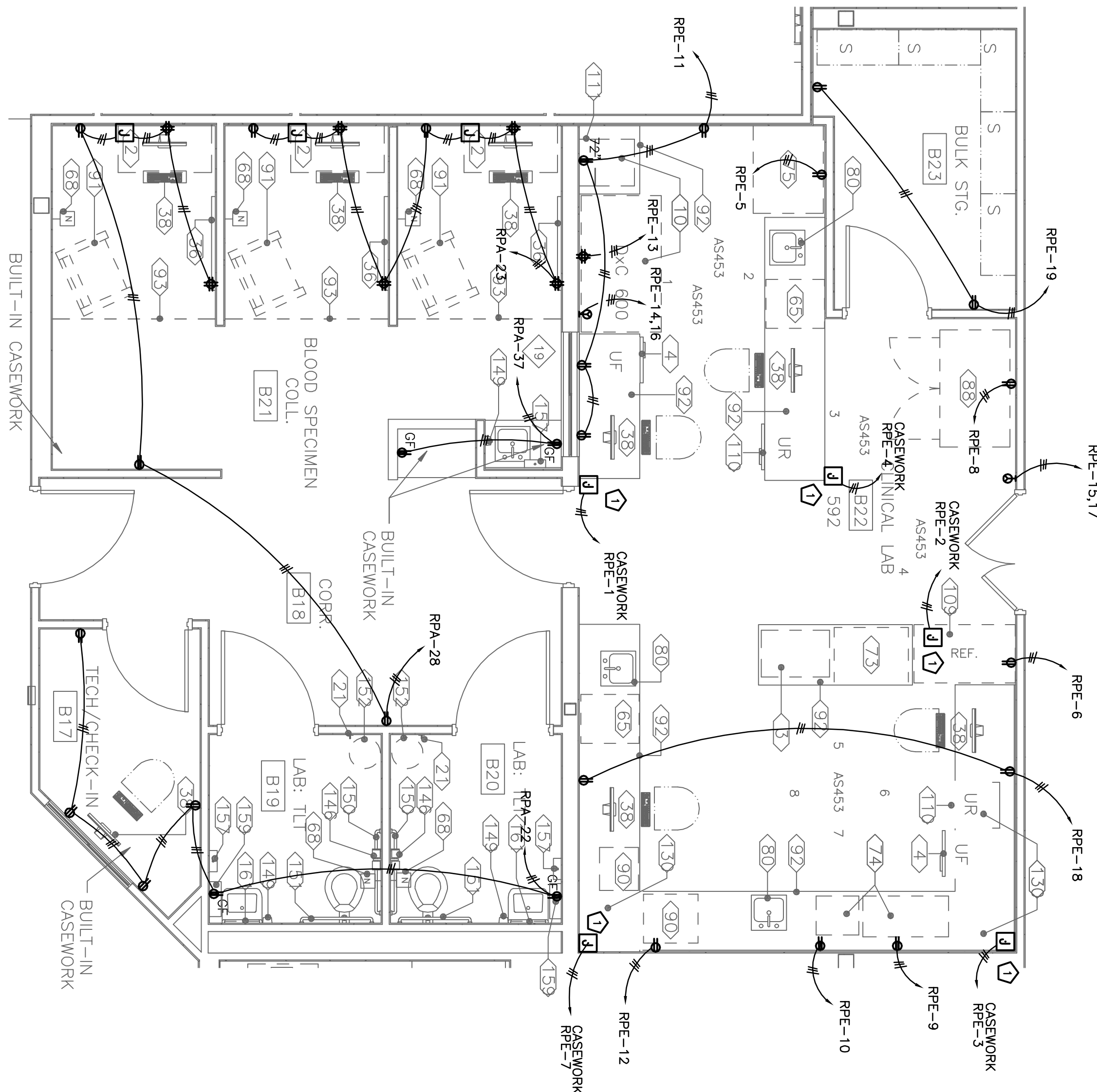
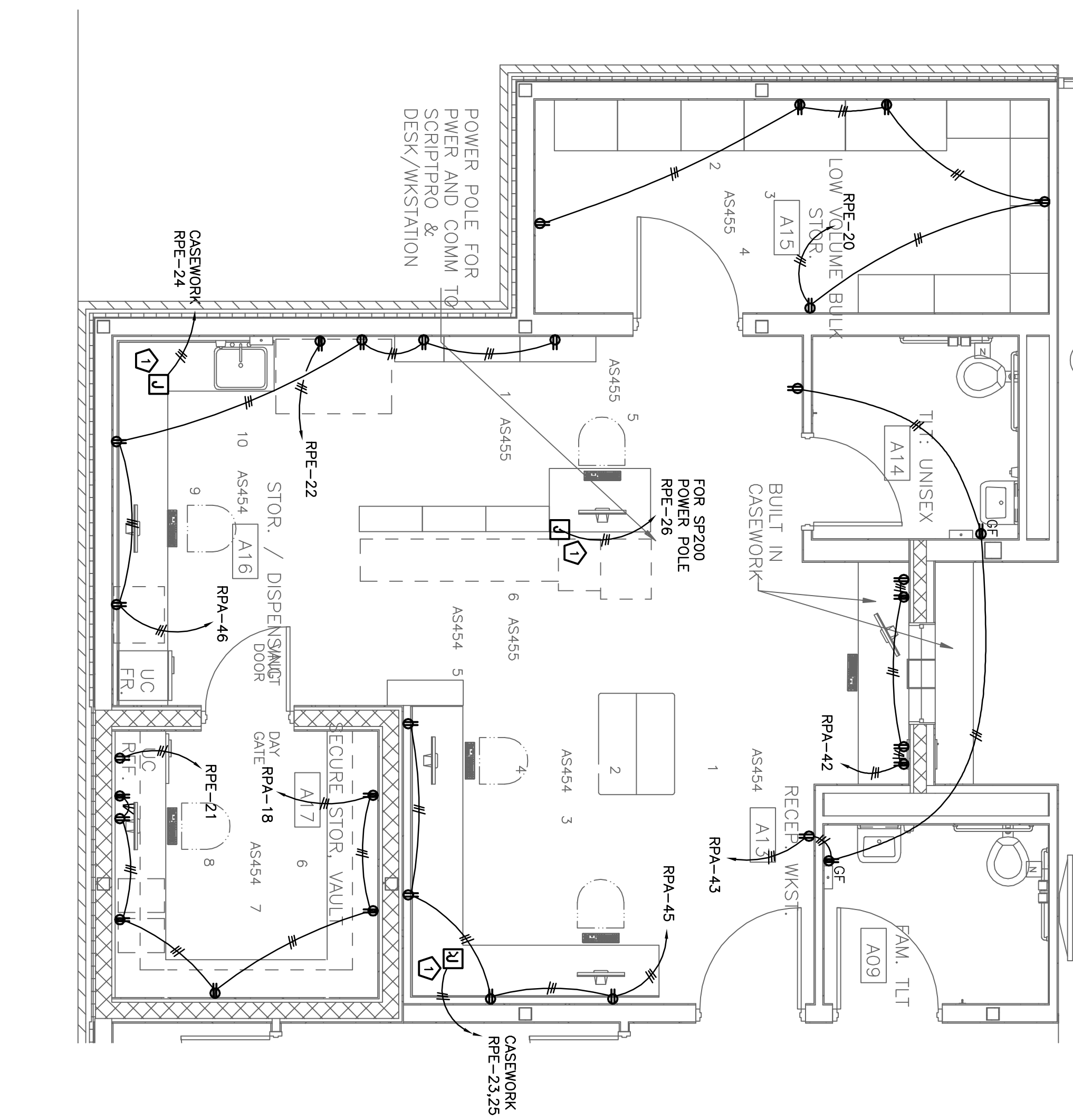
Project Number
520-326

Building Number

Office of

and Facilities Management

 Department of
Veterans Affairs



1
EP-101

ENLARGED PLAN - PHARMACY

1/4" = 1'-0"

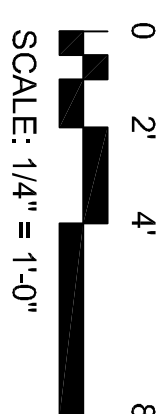
2 ENLARGED PLAN - CLINICAL LABORATORY
EP101 $1/4^{\circ} = 1.0^{\circ}$

KEY NOTES (THIS SHEET ONLY)

1 ELECTRICAL JIB INSTALLED ABOVE ACCESSIBLE CEILING FOR CASEWORK ELECTRICAL CONNECTIONS. VERIFY EXACT REQUIREMENTS WITH CASEWORK SUBMITTAL PRIOR TO ROUGH-IN. CONNECTION FROM JIB TO CASEWORK SHALL BE FURNISHED BY CONTRACTOR.

GENERAL ELECTRICAL NOTES:

1. COMMUNICATE WITH TELECOMMUNICATION DESIGN FOR COORDINATION. COMMUNICATION DEVICES LOCATED ADJACENT TO POWER UNIFORM SPACING SHALL OCCUR BETWEEN WALL POWER AND WALL COMMUNICATION.
2. CIRCUITS IDENTIFIED BY CONNECTION TO PANEL "RPE" SHALL BE CONNECTED TO HOSPITAL GRADE DEVICES "RED" IN COLOR AS PER VA SPECIFICATION.



SCALE: 1/4" = 1'-0"

FINAL SUBMISSION / FULLY SPRINKLERED

1

2

6

↑

CA

9

7

19