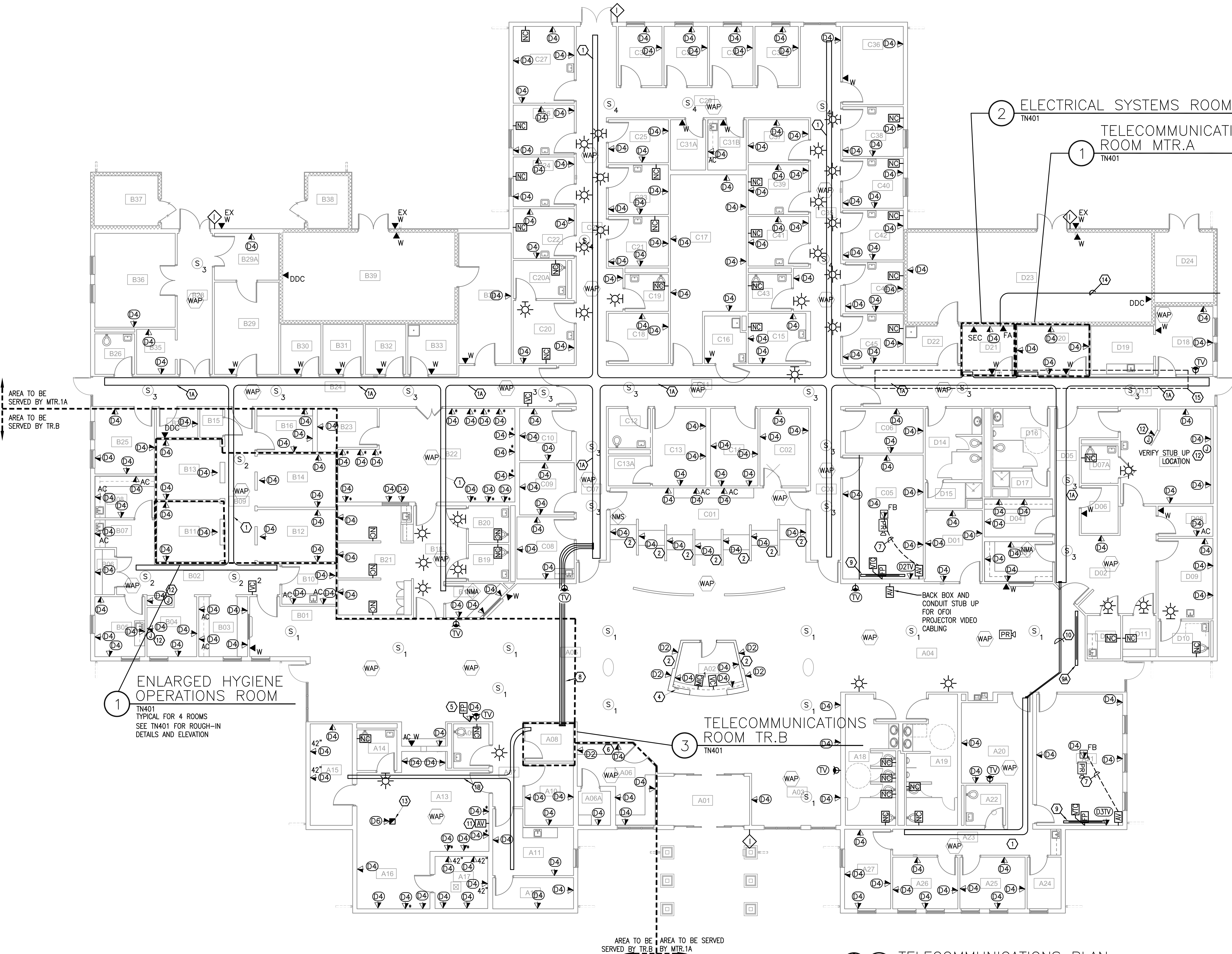


SHEET NOTES

- 1 12" ALUMINUM CABLE TRAY, WIRE-MESH TYPE, 4" SIDE-RAIL, MOUNT ABOVE LAY-IN CEILING IN APPROXIMATE LOCATIONS INDICATED. SUPPORT FROM STRUCTURE AT A MINIMUM OF 8'-0" ON CENTER AND WITHIN 1'-0" OF EACH END WITH TWO 1/2" DIAMETER ALL THREAD RODS AND HANGER KITS. USE TRAPEZE HANGER FOR CABLE TRAY, DO NOT CENTER MOUNT HANGER, HANGER SHALL SUPPORT FULL WIDTH OF CABLE TRAY AND BE HUNG FROM CEILING WITH ALL THREAD RODS. FOR HORIZONTAL TEE'S AND 90 DEGREE TURNS FOR 12" ALUMINUM CABLE TRAY, FIELD CUT AND FABRICATED. PROVIDE RADIAL SWEEPING TURNS. SEE CABLE TRAY NOTES.
- 1A 18" ALUMINUM CABLE TRAY, WIRE-MESH TYPE, 4" SIDE-RAIL, MOUNT ABOVE LAY-IN CEILING IN APPROXIMATE LOCATIONS INDICATED. SUPPORT FROM STRUCTURE AT A MINIMUM OF 8'-0" ON CENTER AND WITHIN 1'-0" OF EACH END WITH TWO 1/2" DIAMETER ALL THREAD RODS AND HANGER KITS. USE TRAPEZE HANGER FOR CABLE TRAY, DO NOT CENTER MOUNT HANGER, HANGER SHALL SUPPORT FULL WIDTH OF CABLE TRAY AND BE HUNG FROM CEILING WITH ALL THREAD RODS. FOR HORIZONTAL TEE'S AND 90 DEGREE TURNS FOR 18" ALUMINUM CABLE TRAY, FIELD CUT AND FABRICATED. PROVIDE RADIAL SWEEPING TURNS. SEE CABLE TRAY NOTES.
- 1B 8" ALUMINUM CABLE TRAY, WIRE-MESH TYPE, 4" SIDE-RAIL, MOUNT ABOVE LAY-IN CEILING IN APPROXIMATE LOCATIONS INDICATED. SUPPORT FROM STRUCTURE AT A MINIMUM OF 8'-0" ON CENTER AND WITHIN 1'-0" OF EACH END WITH TWO 1/2" DIAMETER ALL THREAD RODS AND HANGER KITS. USE TRAPEZE HANGER FOR CABLE TRAY, DO NOT CENTER MOUNT HANGER, HANGER SHALL SUPPORT FULL WIDTH OF CABLE TRAY AND BE HUNG FROM CEILING WITH ALL THREAD RODS. FOR HORIZONTAL TEE'S AND 90 DEGREE TURNS FOR 18" ALUMINUM CABLE TRAY, FIELD CUT AND FABRICATED. PROVIDE RADIAL SWEEPING TURNS. SEE CABLE TRAY NOTES.
- 2 INSTALL COMMUNICATIONS OUTLET IN CASEWORK BELOW COUNTER AS DIRECTED IN FIELD. RUN CABLES CONCEALED IN CASEWORK. HOMERUN (1) 1" SCHEDULE 40 PVC CONDUIT FROM UNDERFLOOR TO NEAREST WALL, TURN UP CONCEALED IN WALL TO 4" ABOVE FLOOR, CONVERT TO EMT, THEN RUN CONCEALED UP IN WALL AND OVERHEAD ABOVE ACCESSIBLE CEILING. SEE UNDERGROUND CABLING TRANSITION DETAIL.
- 3 INSTALL COMMUNICATIONS OUTLET IN CASEWORK AS DIRECTED. RUN CABLES HORIZONTALLY CONCEALED IN CASEWORK. HOMERUN (1) 1" SCHEDULE 40 PVC CONDUIT FROM UNDERFLOOR TO NEAREST WALL, TURN UP CONCEALED IN WALL TO 4" ABOVE FLOOR, CONVERT TO EMT, THEN RUN CONCEALED UP IN WALL AND OVERHEAD ABOVE ACCESSIBLE CEILING. SEE UNDERGROUND CABLING TRANSITION DETAIL.
- 4 INSTALL COMMUNICATIONS OUTLET IN CASEWORK AS DIRECTED. RUN CABLES CONCEALED IN CASEWORK. HOMERUN (4) 1" SCHEDULE 40 PVC CONDUIT FROM UNDERFLOOR TO NEAREST WALL, TURN UP CONCEALED IN WALL TO 4" ABOVE FLOOR, CONVERT TO EMT, THEN RUN CONCEALED UP IN WALL AND OVERHEAD ABOVE ACCESSIBLE CEILING. SEE UNDERGROUND CABLING TRANSITION DETAIL. ROUTE COMMUNICATIONS CABLE THRU CONDUITS, OTHER CONDUITS TO BE UTILIZED FOR NURSE CALL AND OTHER ACCESSORIES.
- 5 MOUNT FLAT PANEL ROUGH-IN BOX 7'-6" AFF FOR FLAT PANEL CONNECTION. INSTALL DATA OUTLETS AND VIDEO CONNECTIONS WITHIN BOX REFER TO DETAILS.
- 6 ROUTE CONDUIT HORIZONTALLY TO NEAREST WALL.
- 7 PROVIDE 1-1/2" CONDUIT BETWEEN FLOORBOX AND AV BACKBOX AS SHOWN.
- 8 (4) 3" CONDUITS ROUTED ABOVE ACCESSIBLE CEILING FOR COMMUNICATIONS CABLING. COORDINATE WITH ALL RESPECTIVE DISCIPLINES. FIRESTOP/SEAL PENETRATIONS AS REQUIRED. REFER TO FIRESTOPPING NOTES ON PLANS AND SPECIFICATIONS.
- 9 106" DIAGONAL SIZE WITH A 36" BLACK DROP, PROVIDE WITH LOW VOLTAGE CONTROL OPTION AND SWITCH ON WALL AT 48" AFF.
- 9A 119" DIAGONAL SIZE WITH A 36" BLACK DROP, PROVIDE WITH LOW VOLTAGE CONTROL OPTION AND SWITCH ON WALL AT 48" AFF.
- 10 (2) 4" CONDUITS ROUTED ABOVE ACCESSIBLE CEILING FOR COMMUNICATIONS HORIZONTAL CABLING BETWEEN CABLE TRAYS COORDINATE WITH ALL RESPECTIVE DISCIPLINES. FIRESTOP/SEAL PENETRATIONS AS REQUIRED. REFER TO FIRESTOPPING NOTES ON PLANS AND SPECIFICATIONS.
- 11 TYPICAL "AV" ROUGH-IN BOX DESIGNATED FOR PRESCRIPTION DISPLAY.
- 12 JUNCTION BOX MOUNTED AT 42" WITHIN ROOM AFF WITH 1" CONDUIT ROUTED TO JUNCTION BOX MOUNTED AT SWITCH HEIGHT IN X-RAY/RADIOLOGY CONTROLS AREA FOR PUSH-BUTTON ANNUNCIATION DEVICE. COORDINATE LOCATION WITH EQUIP. VENDOR.
- 13 POWER/POLE FOR SCRIPTPRO, SEE DETAIL ON SHEET TN504.
- 14 ROUTE (2) 1-1/4" CONDUIT FROM ESS ROOM TO FLUSH MOUNTED 2 GANG JUNCTION BOX MOUNTED AT 12" AFG. COORDINATE WITH GFGI TV DISH EXACT LOCATION STUB OUT. SEAL AND GROUND PENETRATION AND CONDUCTORS AS NECESSARY.
- 15 COORDINATE WITH MECHANICAL DUCT WORK IN THIS AREA.



1 TELECOMMUNICATIONS PLAN
SCALE: 1/8"=1'-0"

FINAL SUBMISSION / FULLY SPRINKLERED

<p>Revisions:</p> <p>Date</p>	<p>CONSULTANTS:</p> <p>CIVIL: KENNETH HORNE & ASSOCIATES 7201 NORTH 9TH AVENUE, STE. 6 PENSACOLA, FLORIDA 32504 PH: (850) 471-9005 FX: (850) 471-0093</p> <p>LANDSCAPE ARCHITECT: CSA GROUP, INC. 6300 PICCADILLY SQUARE DRIVE MOBILE, ALABAMA 36609 PH: (251) 344-4023 FX: (251) 344-4052</p> <p>COMM/IDS: SCHMIDT CONSULTING GROUP, INC. 40 S. PALAFOX PLACE, STE. 300 PENSACOLA, FLORIDA 32502 PH: (850) 438-0050 FX: (850) 432-8631</p> <p>SURVEYORS: KCI TECHNOLOGIES, INC. 10401 HIGHLAND MANOR DRIVE, SUITE 120 TAMPA, FLORIDA 33610 PH: (813) 740-2300 FX: (813) 740-2300</p>	<p>ARCHITECT/ENGINEERS:</p> <p>BES DESIGN/BUILD</p> <p>BES DESIGN/BUILD, LLC 786 Middle St, Fairhope, AL 36532 Phone: 251.990.5778 Fax: 251.990.3718</p>	<p>Drawing Title</p> <p>TELECOMMUNICATIONS FLOOR PLAN</p> <p>Approved Project Director</p>	<p>Project Title</p> <p>CONSTRUCT VA OUTPATIENT CLINIC, PANAMA CITY</p> <p>Location</p> <p>PANAMA CITY, FLORIDA</p> <p>Date</p> <p>APRIL 2013</p> <p>Checked</p> <p>TAN</p> <p>Drawn</p> <p>CEC</p>	<p>Project Number</p> <p>520-326</p> <p>Building Number</p> <p>-</p> <p>Drawing Number</p> <p>TN201</p> <p>Dwg 3 of 14</p>	<p>Office of Construction and Facilities Management</p> <p>Department of Veterans Affairs</p>
-------------------------------	--	---	---	---	--	---