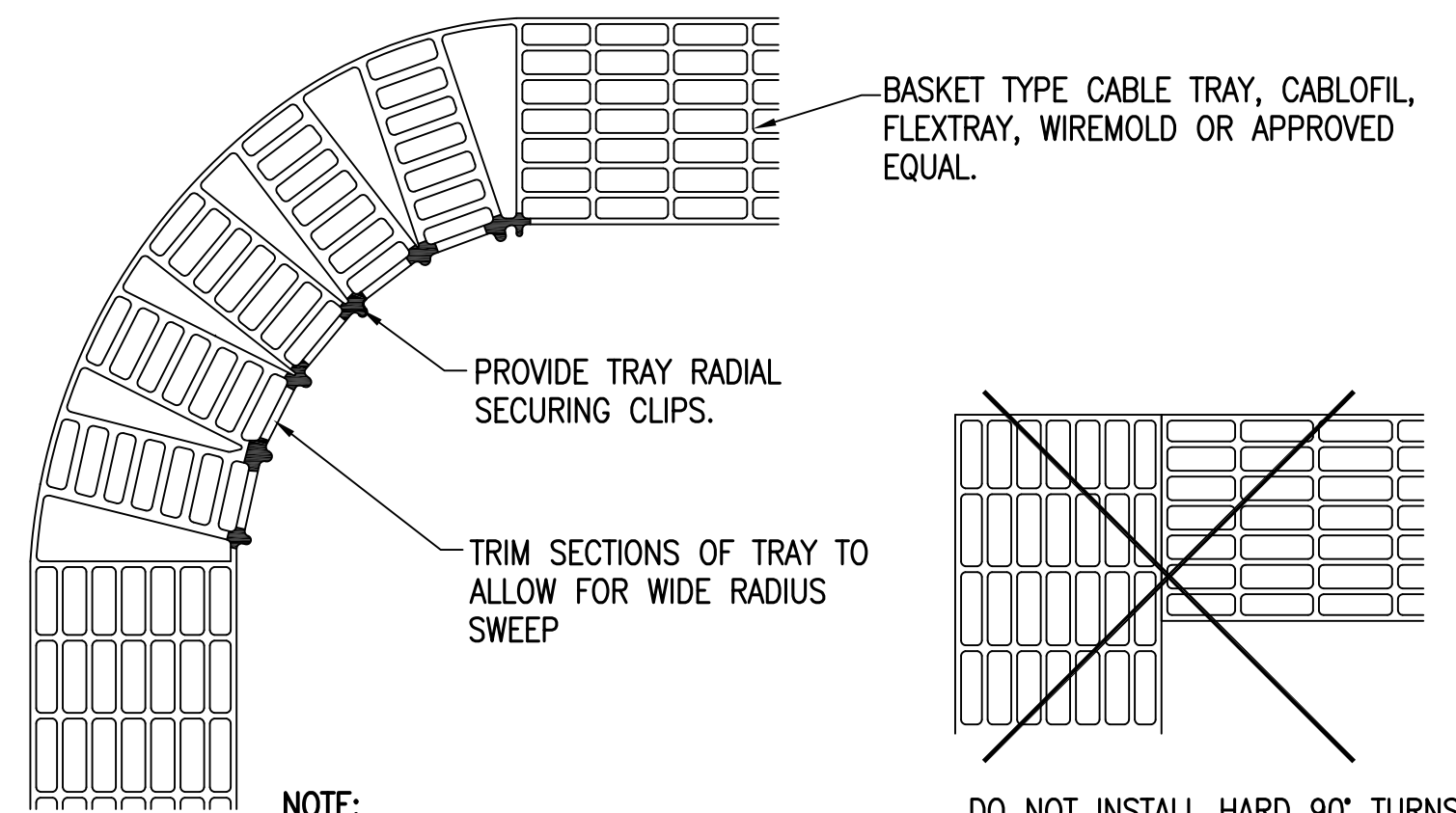


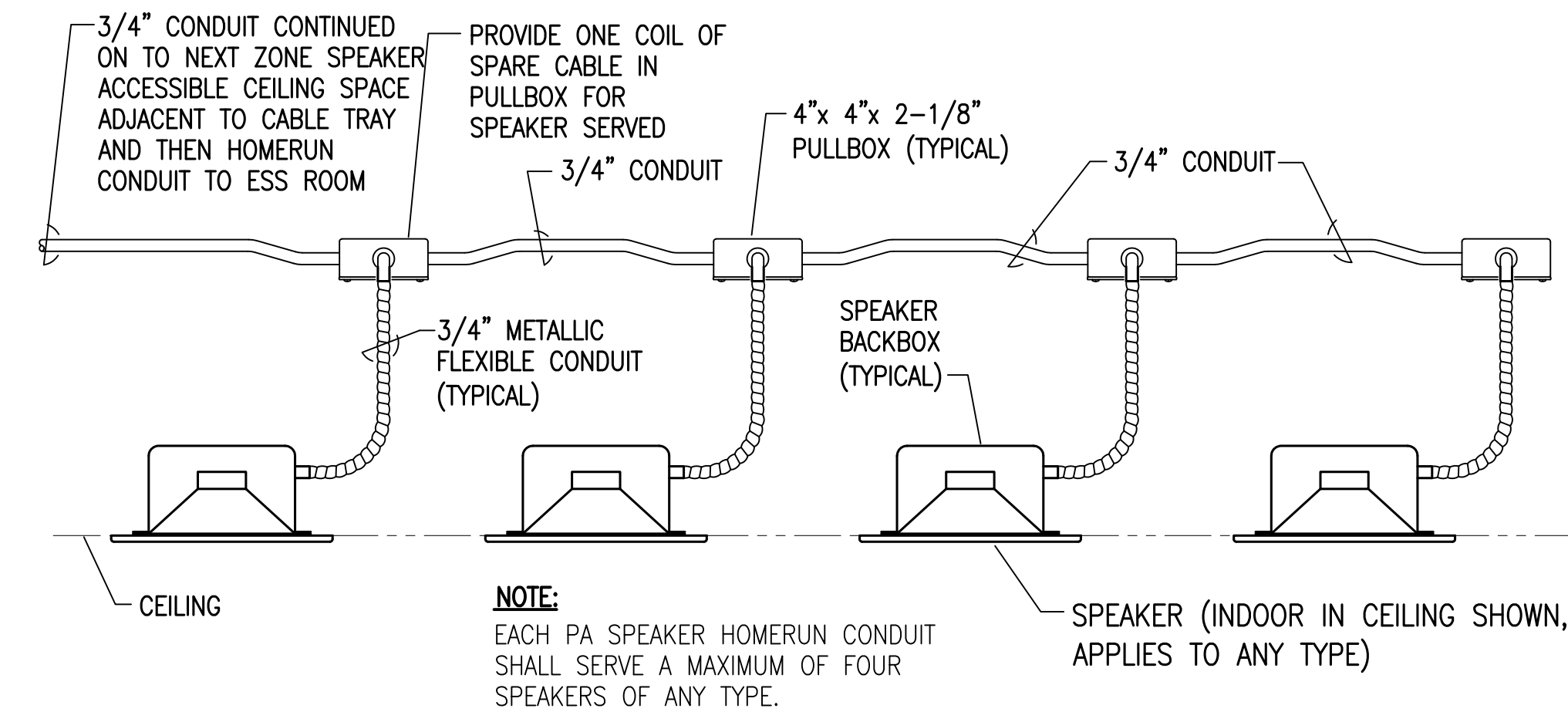
*** NOTES:**

- 1) COMMUNICATIONS OUTLET (CO) MOUNTING HEIGHT MAY VARY AT CABINETS OR CASEWORK. LOCATE AND MOUNT CO's AS DIRECTED BY ARCHITECT IN FIELD. MATCH HEIGHT OF ADJACENT ELECTRICAL POWER OUTLETS.
- 2) MOUNTING HEIGHT OF COMMUNICATIONS OUTLET (CO) SHOWN TO BE MOUNTED ABOVE COUNTER (AC) SHALL BE COORDINATED WITH THE ARCHITECT AND THE GENERAL CONTRACTOR IN THE FIELD PRIOR TO ROUGH-IN.

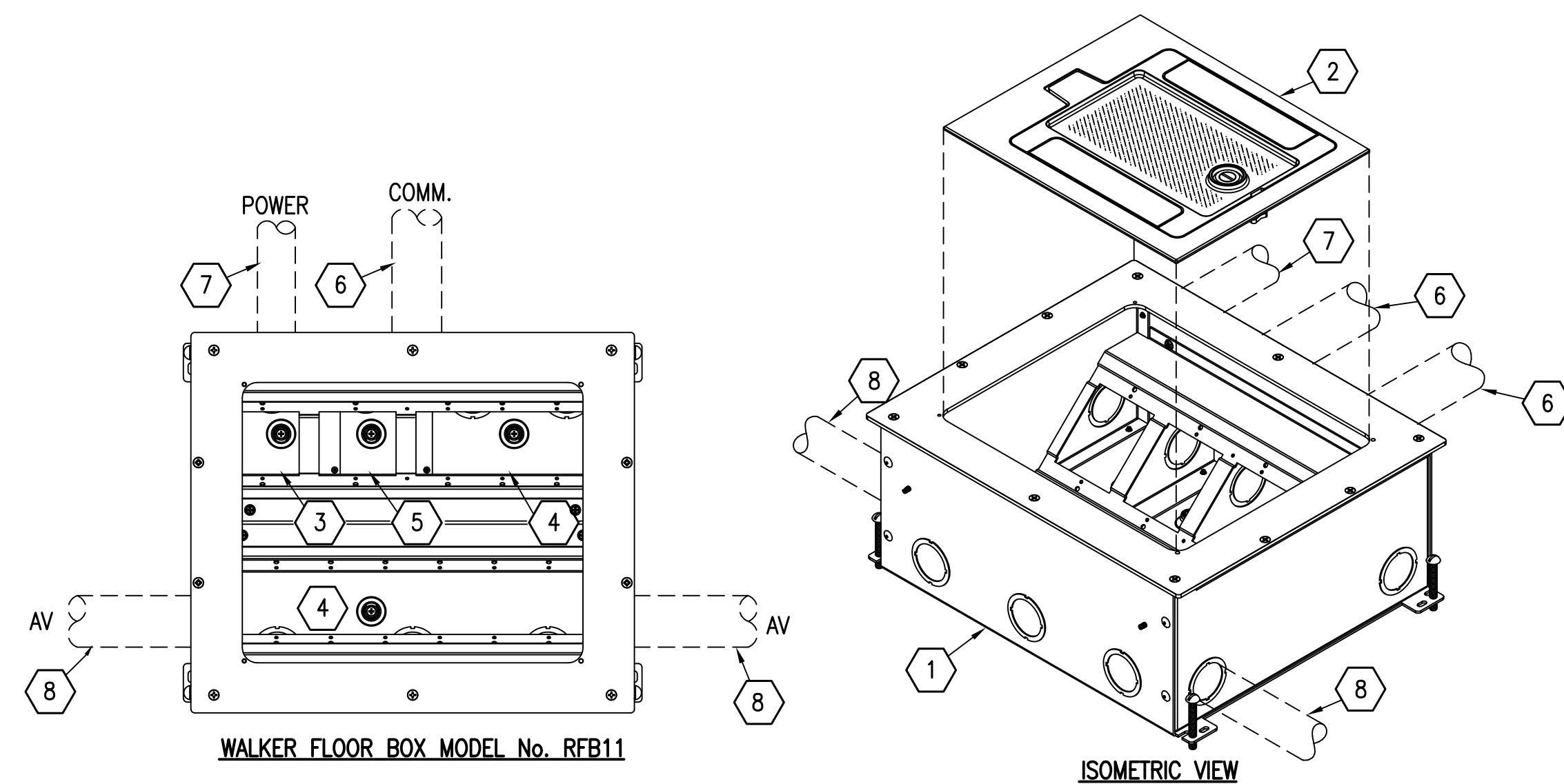
1 TYPICAL COMMUNICATIONS OUTLET (CO) MOUNTING DETAIL
TN503
NOT TO SCALE



2 CABLE TRAY SWEEPING BEND DETAIL
TN503
NOT TO SCALE



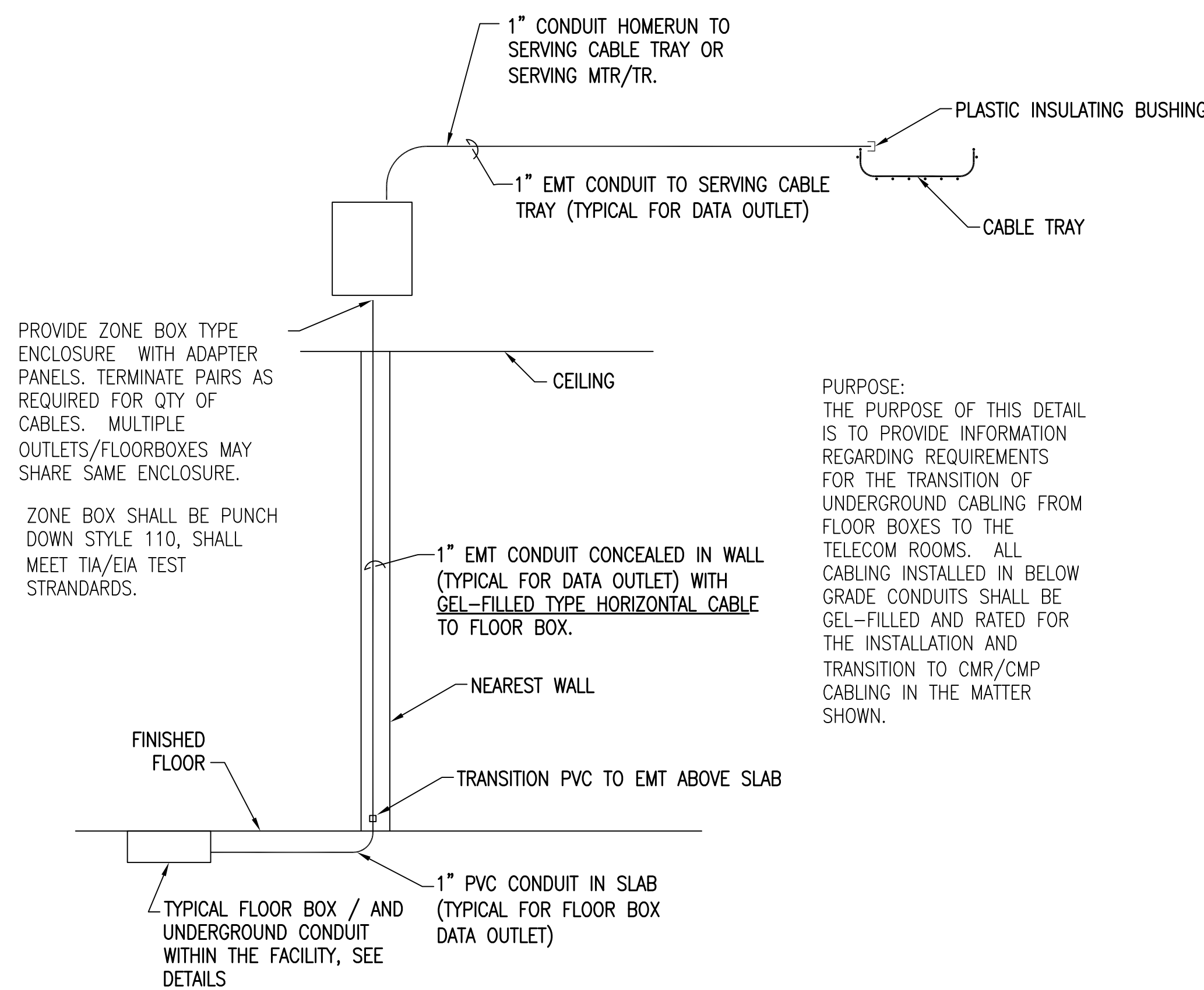
3 TYPICAL PA SPEAKER ROUGH-IN DETAIL
TN503
NOT TO SCALE



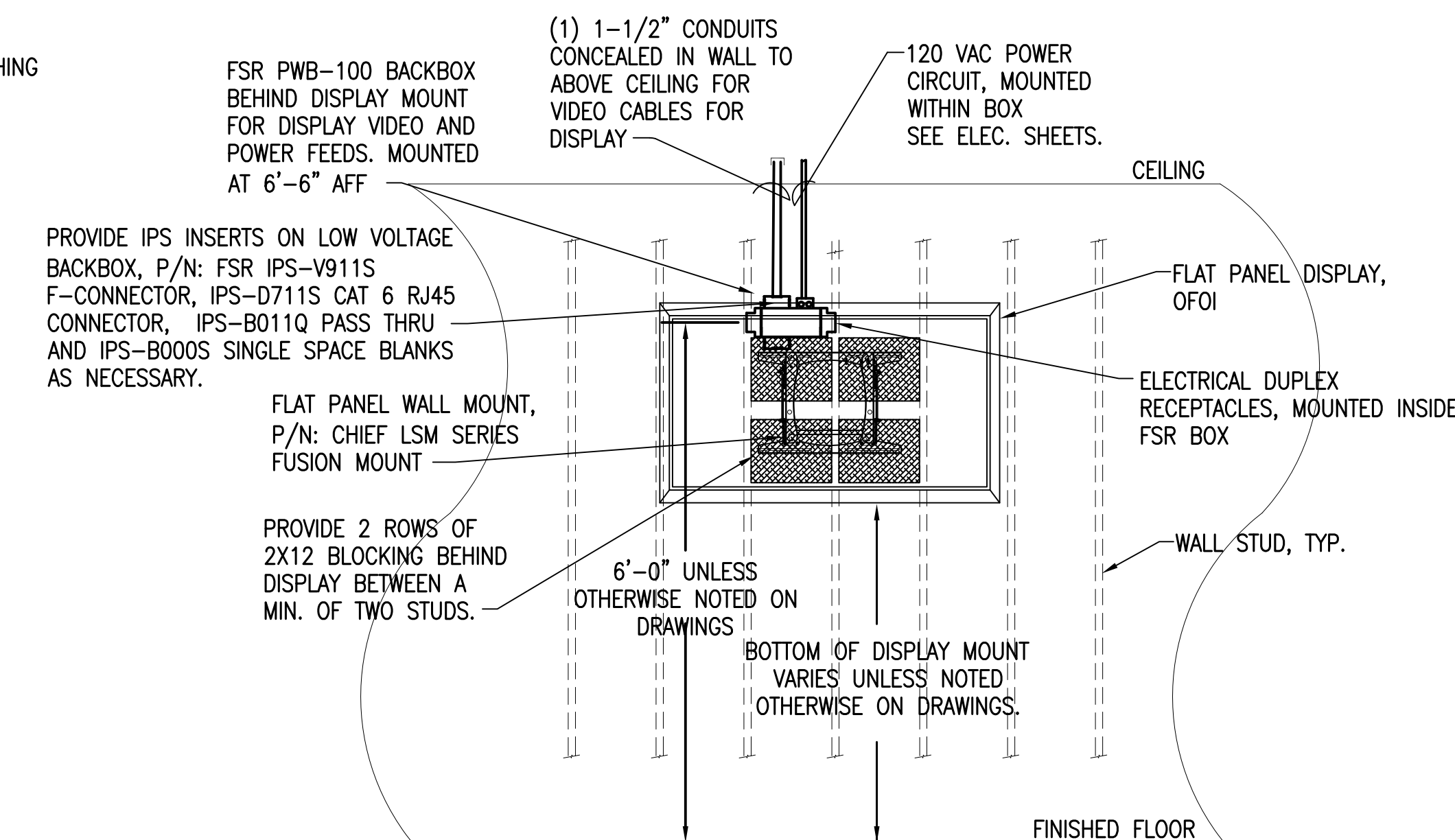
FLOOR BOX KEY NOTES

- 1 BY ELECTRICAL CONTRACTOR: MULTI-SERVICE MULTIMEDIA FLOORBOX, WALKER INFLOOR SYSTEMS RFB11 RECESSED FLOOR BOX. INSTALL FLOOR BOX IN STRICT ACCORDANCE WITH THE MANUFACTURER'S PRINTED INSTRUCTIONS AND AS FOLLOWS: ASSEMBLE BOX. SEAL SIDE AND BOTTOM SEAMS BETWEEN BOX SECTIONS WITH DUCT TAPE. CONCRETE TIGHT. SET BOX ON TOP OF VAPOR BARRIER AND LEVEL. SET BOX HEIGHT TO BE FLUSH WITH SLAB.
- 2 BY ELECTRICAL CONTRACTOR: WALKER FLANGED ACTIVATION KIT RFB119CTCL WITH DIE CAST ALUMINUM TRIM RING, DIE CAST WITH TEXTURED ALUMINUM COATED FINISH AND FLOORING INSERT AREAS FOR CARPET INSERTS.
- 3 BY ELECTRICAL CONTRACTOR: STANDARD DUPLEX RECEPTACLE PLATE WITH (2) 120 VAC OUTLET RECEPTACLES. SEE ELECTRICAL PLANS FOR CIRCUITING REQUIREMENTS.
- 4 BY ELECTRICAL CONTRACTOR: PROVIDE BLANK COVER PLATE FOR A/V CONNECTION (WHEN REQUIRED).
- 5 BY STRUCTURED CABLING SYSTEM CONTRACTOR: PROVIDE COMMUNICATIONS OUTLET COUPLERS & JACKS AS REQUIRED. REFER TO FLOOR PLANS FOR COMMUNICATION OUTLET TYPES.
- 6 BY ELECTRICAL CONTRACTOR: 1" COMMUNICATIONS SYSTEMS CONDUIT, RUN SCHEDULE 40 PVC (BELOW SLAB) TO NEAREST WALL, CONVERT TO EMT AT 4" ABOVE SLAB, AND EXTEND TO CABLE TRAY.
- 7 BY ELECTRICAL CONTRACTOR: POWER CONDUIT WITH WATERTIGHT FITTINGS, SEE ELECTRICAL DRAWINGS AND SPECIFICATIONS.
- 8 BY ELECTRICAL CONTRACTOR: (FOR A/V SYSTEMS BY OTHERS) 1-1/2" CONDUIT (OR AS NOTED ON DRAWING) RUN SCHEDULE 40 PVC (BELOW SLAB) TO NEAREST WALL, CONVERT TO EMT AT 4" ABOVE SLAB, AND STUB TO ABOVE CEILING UNLESS NOTED OTHERWISE, SEE FLOOR PLAN FOR QUANTITY AND ROUTING REQUIREMENTS.



4 TYPICAL MULTIMEDIA FLOOR BOX DETAIL
TN503
NOT TO SCALE



5 UNDERGROUND CABLE TRANSITION DETAIL
TN503
NOT TO SCALE



6 FLAT PANEL DISPLAY MONITOR AND CONDUIT ROUGH-IN DETAIL
TN503
NOT TO SCALE

CONSULTANTS: CIVIL: KENNETH HORNE & ASSOCIATES 7201 NORTH 9TH AVENUE, STE. 6 PENSACOLA, FLORIDA 32504 PH: (850) 471-0005 FX: (850) 471-0093 LANDSCAPE ARCHITECT: CSA GROUP, INC. 6300 PICCADILLY SQUARE DRIVE MOBILE, ALABAMA 36609 PH: (251) 344-4023 FX: (251) 344-4052		ARCHITECT/ENGINEERS:  BES DESIGN/BUILD, LLC 766 Middle St, Fairhope, AL 36532 Phone: 251.990.5778 Fax: 251.990.3716		Drawing Title TELECOMMUNICATIONS DETAILS Approved Project Director		Project Title CONSTRUCT VA OUTPATIENT CLINIC, PANAMA CITY Location PANAMA CITY, FLORIDA Date APRIL 2013		Project Number 520-326 Building Number - Drawing Number TN503 Dwg 7 of 14		Office of Construction and Facilities Management 	
Revisions:		Date:		Checked: TAN		Drawn: CEC		Final Submission / Fully Sprinklered			