

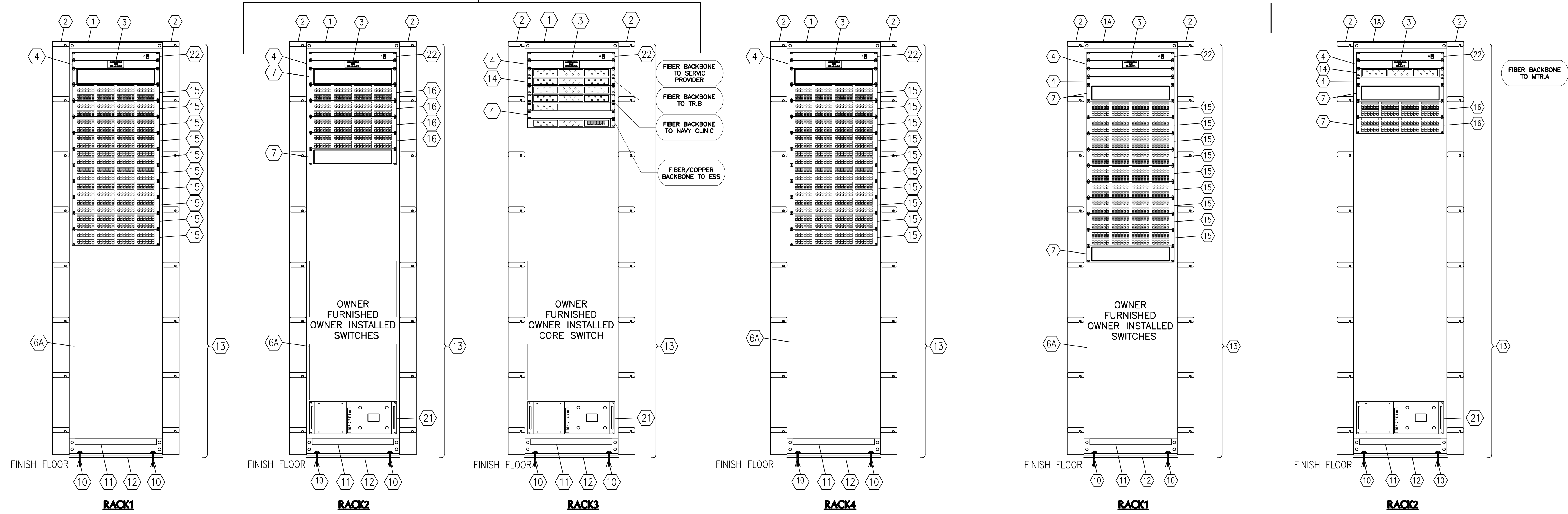
## COMMUNICATIONS RACK ELEVATION KEY NOTES:

- 1 STANDARD 7'-0" HIGH X 31.5" WIDE X 41.1" DEEP EQUIPMENT CABINET WITH UNIVERSAL 5/8", 5/8", 1/2" ALTERNATING HOLE PATTERN FRONT AND BACK, AND BLACK BAKED ENAMEL FINISH WITH REMOVABLE SIDE PANELS. PROVIDE VERTICAL RACK CABLING MANAGEMENT WITHIN CABINET. PROVIDE SPLIT FRONT LOCKABLE DOORS, PROVIDE LOCKABLE SPLIT REAR DOOR, VENTED). (PANDUIT CN1 FOR OUTSIDE ENCLOSURE AND PANDUIT CN2 FOR INSIDE ENCLOSURE OR EQUAL) PROVIDE OVERHEAD CABLE ROUTING SYSTEM, (PANDUIT CR6BL OR EQUAL)
- 1A 7'-0" HIGH X 30" WIDE X 31.5" DEEP EQUIPMENT CABINET WITH UNIVERSAL 5/8", 5/8", 1/2" ALTERNATING HOLE PATTERN FRONT AND BACK, AND BLACK BAKED ENAMEL FINISH WITH REMOVABLE SIDE PANELS. PROVIDE VERTICAL RACK CABLING MANAGEMENT WITHIN CABINET. PROVIDE SPLIT FRONT LOCKABLE DOORS, PROVIDE LOCKABLE SPLIT REAR DOOR, VENTED). PROVIDE WITH 10" VENTILATION FAN, (P/N MIDDLE ATLANTIC DCLVRD-44).
- 1B STANDARD 7'-0" HIGH X 30" WIDE X 36" DEEP EQUIPMENT CABINET WITH UNIVERSAL 5/8", 5/8", 1/2" ALTERNATING HOLE PATTERN FRONT AND BACK, (P/N MIDDLE ATLANTIC DRK SERIES ENCLOSURE) AND BLACK BAKED ENAMEL FINISH WITH REMOVABLE SIDE PANELS, (P/N MIDDLE ATLANTIC SPN-44-36). PROVIDE VERTICAL RACK CABLING MANAGEMENT WITHIN CABINET (P/N MIDDLE ATLANTIC DRK-44DUCT. PROVIDE FRONT DOORS, (P/N MIDDLE ATLANTIC DCLVRD-44. PROVIDE SPLIT REAR DOOR, VENTED, (P/N MIDDLE ATLANTIC DCLVRD-44). PROVIDE WITH 10" VENTILATION FAN, (P/N MIDDLE ATLANTIC FAN-10).
- 1C CABINET SHALL BE MIDDLE-ATLANTIC SR-SR2-12)
- 2 DOUBLE SIDED VERTICAL RACK CABLING SECTION, MOUNTED WITHIN ENCLOSURE
- 3 IDENTIFICATION TAG AT TOP OF RACK, SEE "TYPICAL COMMUNICATIONS RACK ENGRAVED TAG DETAIL".
- 4 ONE RACK SPACE BLANK FILLER PLATE, COLOR BLACK.
- 5 TWO RACK SPACE BLANK FILLER PLATE, COLOR BLACK.
- 6 FOUR RACK SPACE BLANK FILLER PLATE, COLOR BLACK.
- 6A FULL LENGTH BLANKING SHADE, (PANDUIT FLBSIM-Y OR EQUAL)
- 7 TWO RACK SPACE HORIZONTAL CABLE MANAGER ON FRONT SIDE OF RACK. PROVIDE WITH HINGED SOLID COVER TO CONCEAL CABLES.
- 10 CONCRETE FLOOR RACK MOUNTING KIT.
- 11 RACK BASE DUST COVER, BLACK ENAMEL FINISH.
- 12 RACK ISOLATION KIT.
- 13 NYLON CABLE STANDOFF BRACKET, MOUNT ON BACK LEFT SIDE OF ALL RACKS AT 12" ON CENTER FOR ROUTING GROUNDING CONDUCTORS AND POWER EXTENSION CORDS UP AND DOWN RACKS. TYPWRAP EACH CONDUCTOR AND CORD INDIVIDUALLY ON STANDOFF. (NOT SHOWN ON ELEVATIONS)
- 14 DATA FIBER BACKBONE PATCH PANELS, RACK MOUNT. SEE SHEET TN603.
- 15 48 PORT CATEGORY 6 HORIZONTAL WIRING PATCH PANEL, SEE "VOICE/DATA OR SECURITY SINGLE LINE DIAGRAM", PROVIDE WITH CABLE ROUTING RAILS ON REAR FOR ROUTING AND SECURING CABLES.
- 15A 24 PORT CATEGORY 6 HORIZONTAL WIRING PATCH PANEL, SEE "VOICE/DATA OR SECURITY SINGLE LINE DIAGRAM", PROVIDE WITH CABLE ROUTING RAILS ON REAR FOR ROUTING AND SECURING CABLES.
- 16 48 PORT CATEGORY 5e VOICE WIRING PATCH PANEL, SEE "VOICE/DATA SINGLE LINE DIAGRAM", PROVIDE WITH CABLE ROUTING RAILS ON REAR FOR ROUTING AND SECURING CABLES.
- 18 OWNER FURNISHED, OWNER INSTALLED LAN EQUIPMENT. SEE "VOICE/DATA SYSTEM SINGLE LINE DIAGRAM". NOTE: WHERE EQUIPMENT VARIES IN SIZE OR QUANTITY FROM THAT INDICATED, PROVIDE BLANK FILLER PLATES TO COVER ALL UNUSED RACK SPACES.
- 21 OTOI RACKMOUNT UPS. PROVIDE EXTENSION CORD AS REQUIRED TO PLUG INTO WALL.
- 21A RACK MOUNT UPS, SIZE ACCORDINGLY FOR LOAD IN RACK. (MIDDLE ATLANTIC UPS 2200R OR EQUAL)
- 22 RACKMOUNT POWER SURGE SUPPRESSOR, COLOR BLACK, PROVIDE WITH 6 AC RECEPTACLES ON BACK OF UNIT AND 12' POWER CORD.
- 22A RACKMOUNT POWER SURGE SUPPRESSOR WITH WORK LIGHT, COLOR BLACK, PROVIDE WITH 6 AC RECEPTACLES ON BACK OF UNIT AND 12' POWER CORD. (MIDDLE ATLANTIC PDLT-815RV OR EQUAL)
- 23 RACKMOUNT SHELF FOR OWNER PROVIDED SERVERS AND NETWORK EQUIPMENT.
- 23A WALL MOUNT CABINET, 48" (H) X 24" (W) X 12" (D) HEAVY DUTY ENCLOSURE (HOFFMAN DBS482412G OR APPROVED EQUAL). FURNISH ENCLOSURE WITH INTEGRAL LOCK/KEY.
- 24 24 PORT FIBER PATCH PANEL, SEE "DATA/VOICE SINGLE LINE DIAGRAM".
- 25 NETWORK SWITCH. SEE "DATA/VOICE SYSTEM SINGLE LINE DIAGRAM". NOTE: WHERE EQUIPMENT VARIES IN SIZE OR QUANTITY FROM THAT INDICATED.
- 26 MOUNT RECEPTACLE TO INSIDE OF PANEL, OR AS REQUIRED PER MANUFACTURER'S INSTRUCTIONS.
- 27 FIBER OPTIC CONVERTER FOR CCTV SYSTEM
- 28 OTOI GATEWAY/ROUTER

**NOTE**  
PROVIDE BLANK RU SPACE AS NECESSARY FOR EACH CABINET.  
COORDINATE EXACT CABLE COUNTS WITH FLOOR PLANS FOR EXACT QUANTITY OF PATCH PANELS REQUIRED.

CONNECT ALL RACKS TOGETHER, NO SIDE PANELS BETWEEN RACKS

CONNECT ALL RACKS TOGETHER, NO SIDE PANELS BETWEEN RACKS

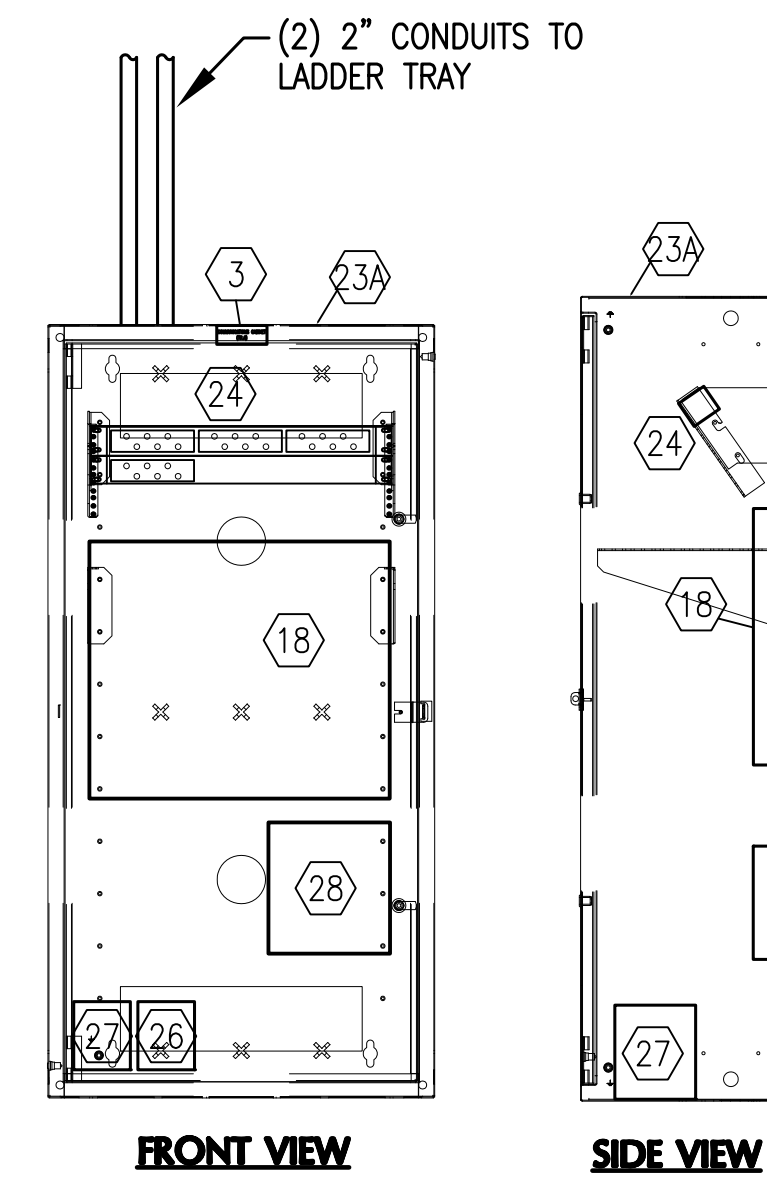


## MAIN TELECOMMUNICATIONS RACK ELEVATIONS (MTR.A)

TN401  
NOT TO SCALE

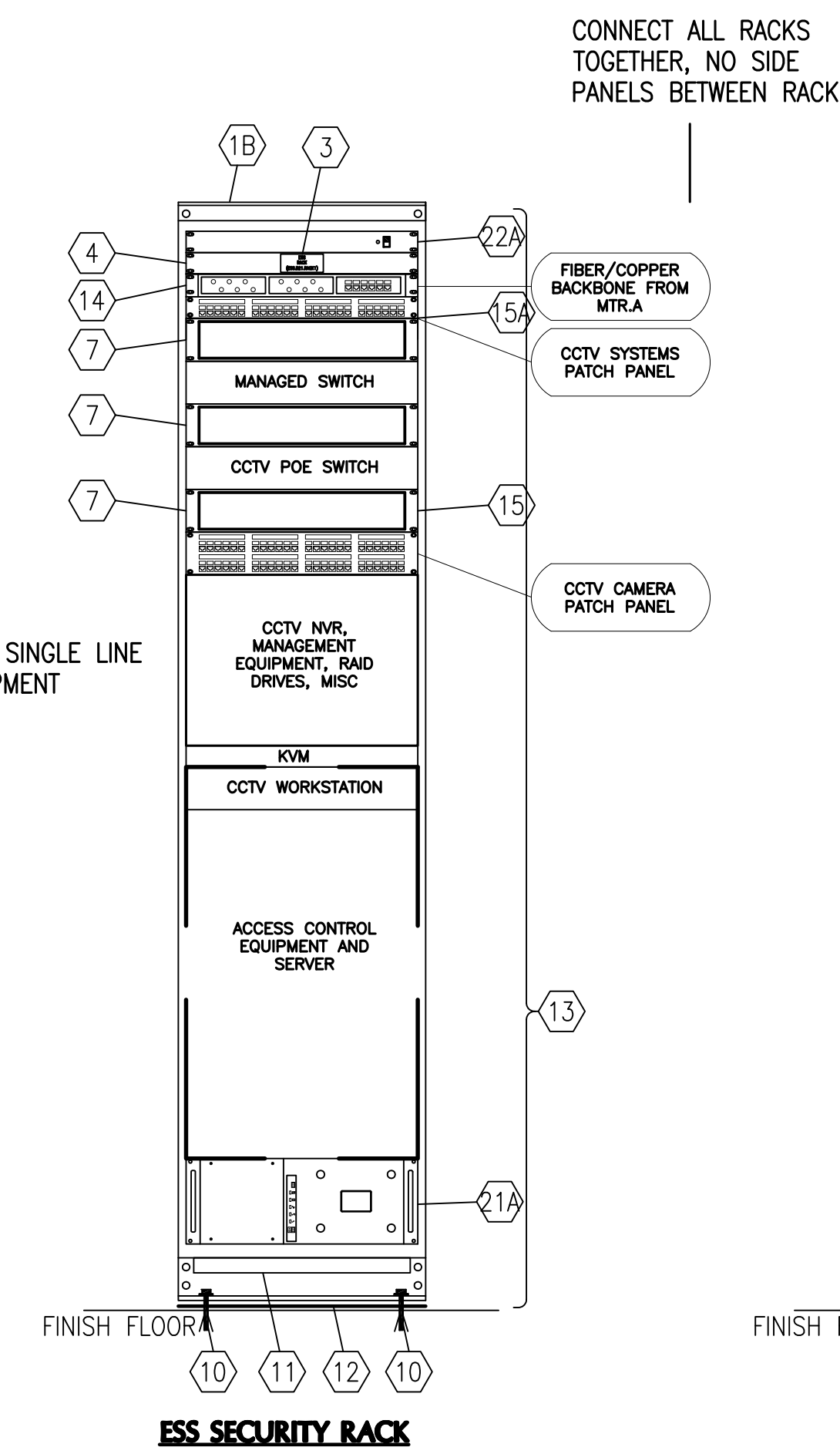
## TELECOMMUNICATIONS RACK ELEVATIONS (TR.B)

TN401  
NOT TO SCALE



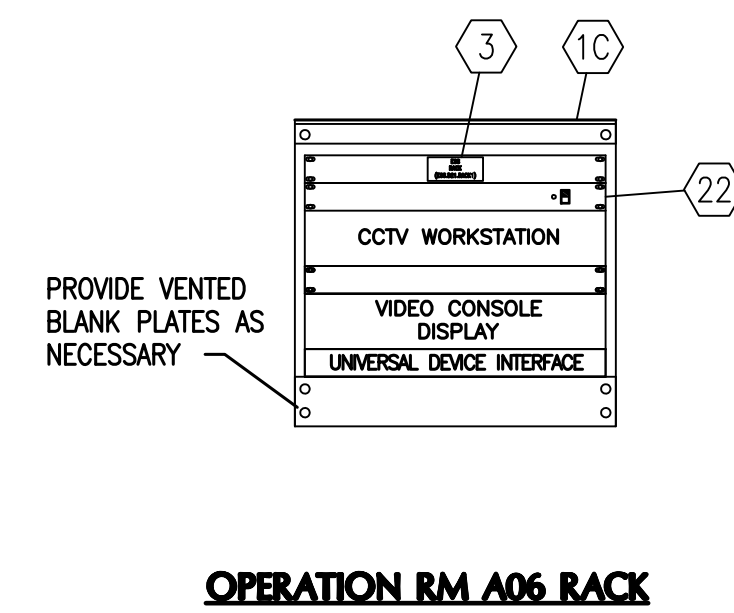
## NAVY CLINIC WALL MOUNTED TELECOMMUNICATIONS ENCLOSURE

TN401  
NOT TO SCALE



## CCTV/SECURITY ENCLOSURE ELEVATION

TN401  
NOT TO SCALE



## OPERATION RM A06 RACK

Revisions	Date

### CONSULTANTS:

CIVIL:  
KENNETH HORNE & ASSOCIATES  
7201 NORTH 9TH AVENUE, STE. 300  
PENSACOLA, FLORIDA 32504  
PH: (850) 471-9005  
FX: (850) 471-0093

COMM/IDS:  
SCHMIDT CONSULTING GROUP, INC.  
40 S. PALAFOX PLACE, STE. 300  
PENSACOLA, FLORIDA 32502  
PH: (850) 438-0050  
FX: (850) 432-8631

LANDSCAPE ARCHITECT:  
CSA GROUP, INC.  
6300 PICCADILLY SQUARE DRIVE  
MOBILE, ALABAMA 36609  
PH: (251) 344-4023  
FX: (251) 344-4052

SURVEYORS:  
KCI TECHNOLOGIES, INC.  
10401 HIGHLAND MANOR DRIVE, SUITE 120  
TAMPA, FLORIDA 33610  
PH: (813) 740-2300

### ARCHITECT/ENGINEERS:



**BES DESIGN/BUILD, LLC**  
786 Middle St, Fairhope, AL 36532  
Phone: 251.990.5778 Fax: 251.990.3718

### Drawing Title TELECOMMUNICATIONS RACK ELEVATIONS

Approved Project Director

Project Title  
**PANAMA CITY  
OUTPATIENT CLINIC  
VA GULF COAST HEALTH CARE**

Location  
**PANAMA CITY, FLORIDA**

Date  
**MARCH 2018**

Checked  
**TAN**

Drawn  
**CEC**

Project Number  
**520-326**

Building Number  
**-**

Drawing Number  
**TN701**

Dwg 14 of 14

Office of  
Construction  
and Facilities  
Management

