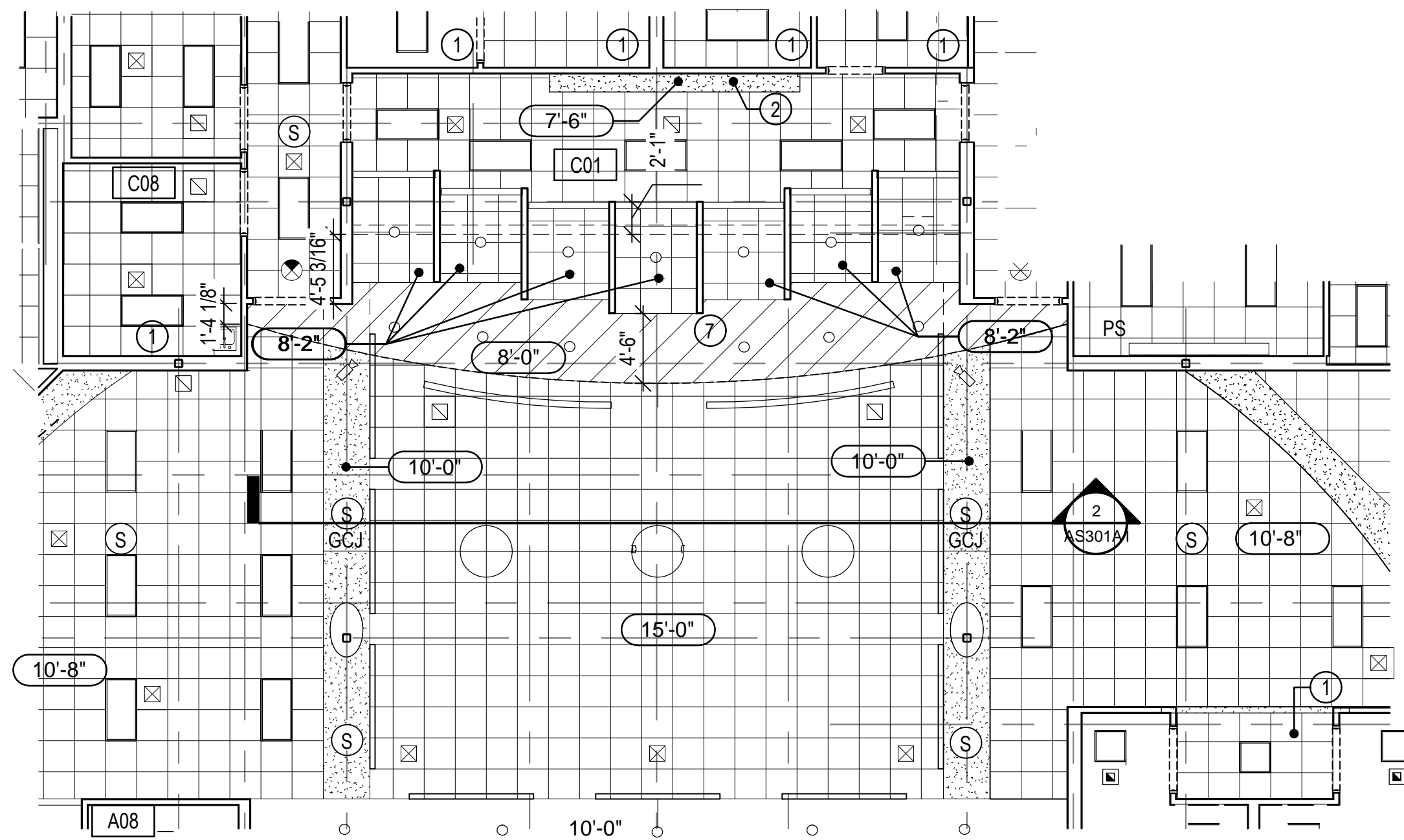


GENERAL NOTES

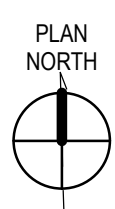
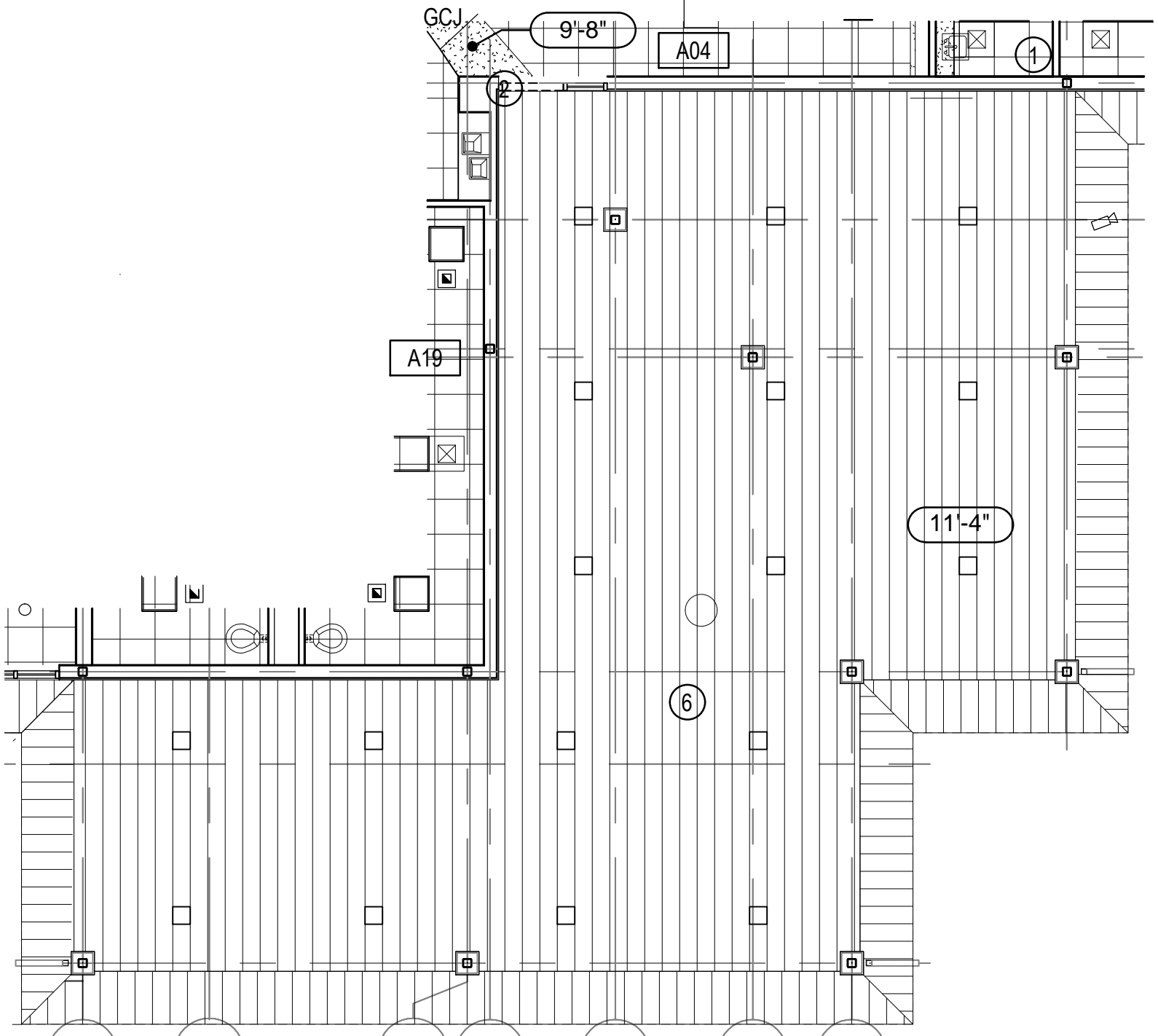
1. SEE TO BASE BID DRAWINGS FOR NOTES, SYMBOLS AND LEGENDS.



1  
AS110ALT

ALTERNATE #9  
PARTIAL CEILING PLAN

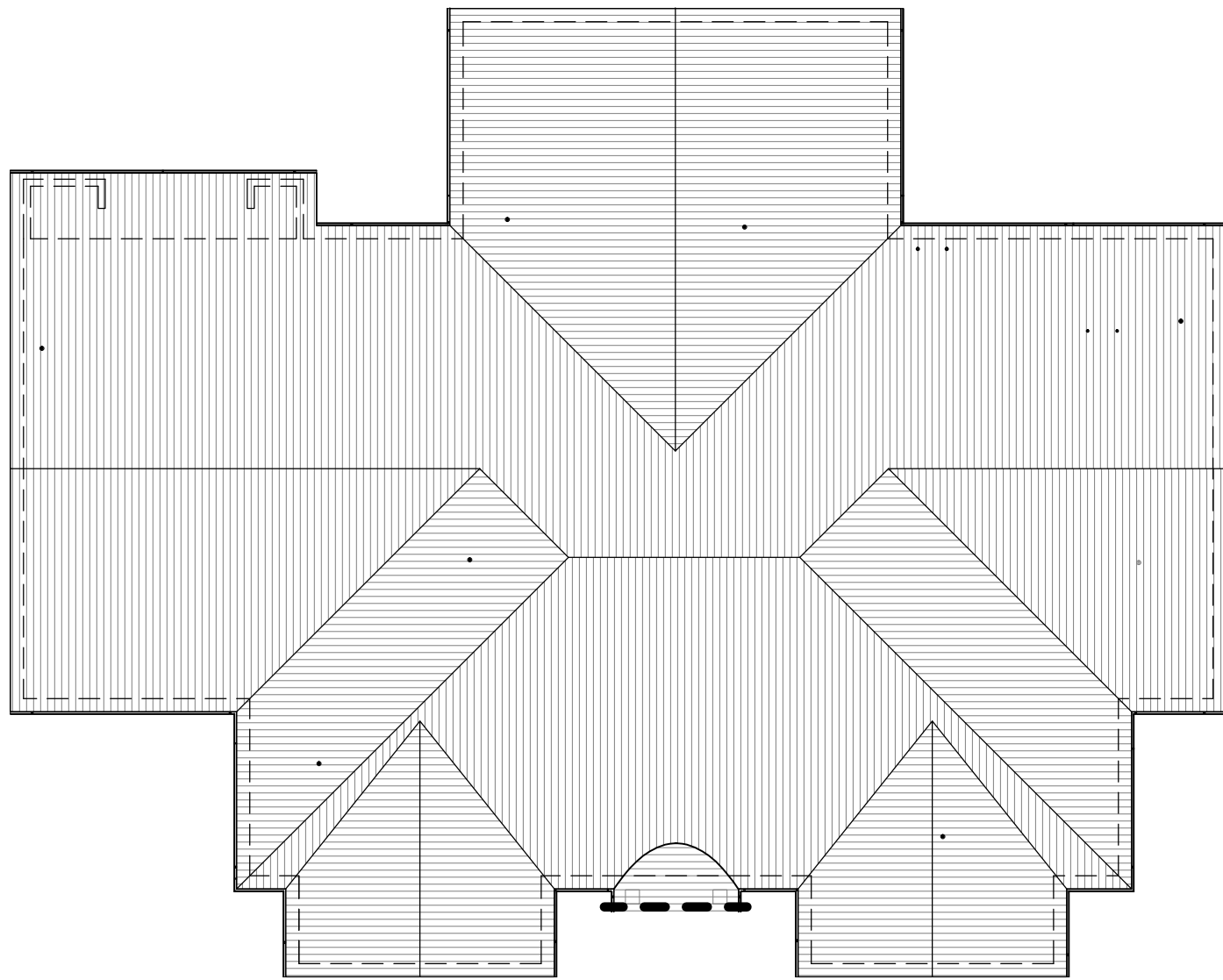
1/8" = 1'-0"



2  
AS110ALT

ALTERNATE #10  
PARTIAL CEILING PLAN

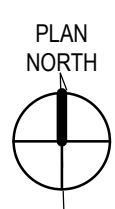
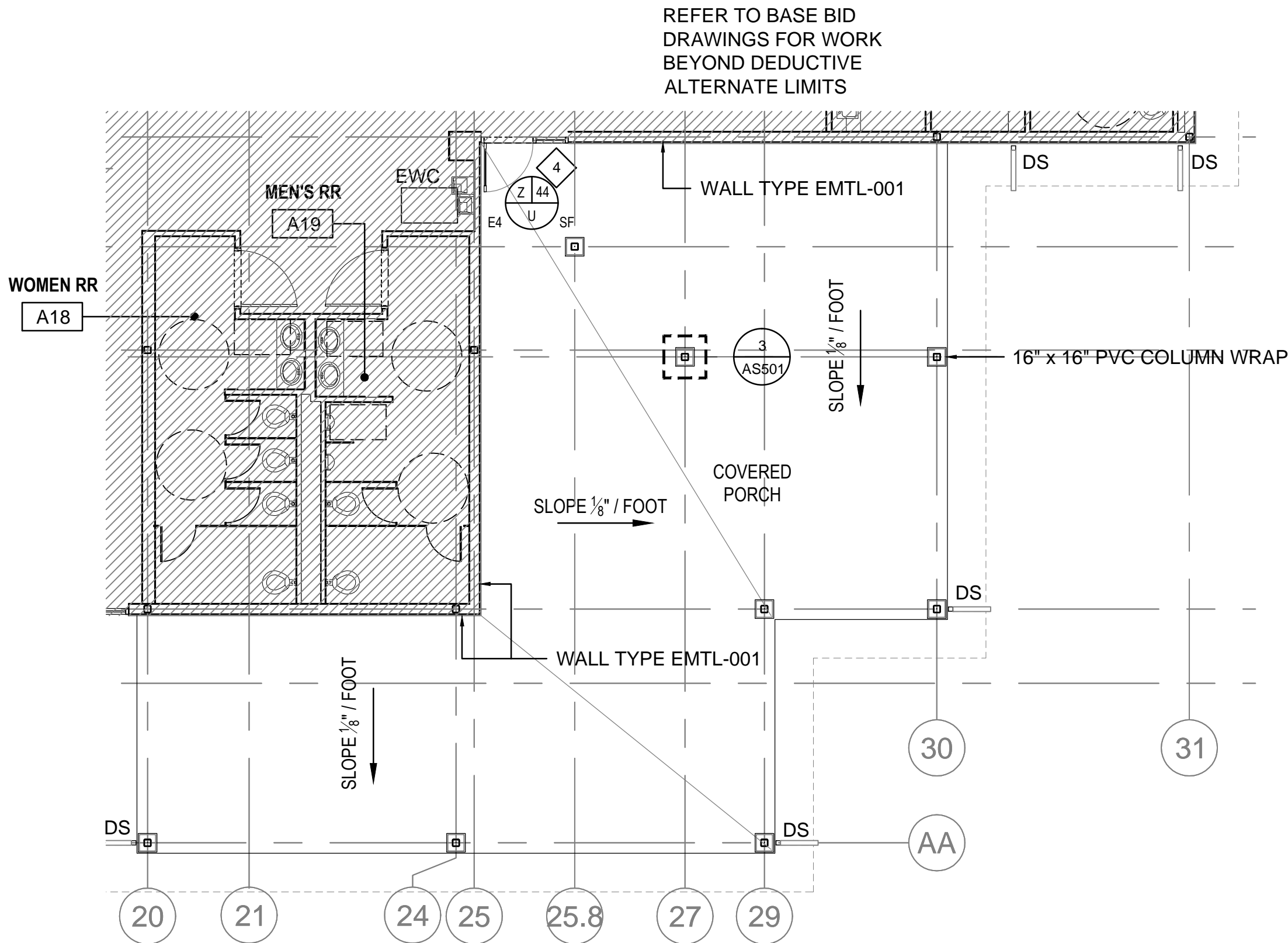
1/8" = 1'-0"



3  
AS110ALT

ALTERNATE #9  
ROOF PLAN

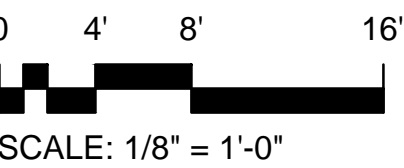
NO SCALE



4  
AS110ALT

ALTERNATE #10  
PARTIAL FLOOR PLAN

1/8" = 1'-0"



FINAL SUBMISSION / FULLY SPRINKLERED

		<b>CONSULTANTS:</b>			<b>ARCHITECT/ENGINEERS:</b>		<b>Drawing Title</b> FLOOR PLAN		<b>Project Title</b> CONSTRUCT VA OUTPATIENT CLINIC, PANAMA CITY		<b>Project Number</b> 520-326		<div>Office of Construction and Facilities Management</div> <div> Department of Veterans Affairs</div>				
		CIVIL: KENNETH HORNE & ASSOCIATES 7201 NORTH 9TH AVENUE, STE. 6 PENSACOLA, FLORIDA 32504 PH: (850) 471-9005 FX: (850) 471-0093  LANDSCAPE ARCHITECT: CSA GROUP, INC. 6300 PICCADILLY SQUARE DRIVE MOBILE, ALABAMA 36609 PH: (251) 344-4023 FX: (251) 344-4052			COMM/ES: SCHMIDT CONSULTING GROUP, INC. 40 S. PALAFOX PLACE, STE. 300 PENSACOLA, FLORIDA 32502 PH: (850) 438-0050 FX: (850) 432-8631  SURVEYORS: KCI TECHNOLOGIES, INC. 10401 HIGHLAND MANOR DRIVE, SUITE 120 TAMPA, FLORIDA 33610 PH: (813) 740-2300 FX: (251) 344-4052		 <b>BES DESIGN/BUILD</b> BES DESIGN/BUILD, LLC 766 Middle St, Fairhope, AL 36532 Phone: 251.990.5778 Fax: 251.990.3716		<b>Approved Project Director</b>		<b>Location</b> PANAMA CITY, FLORIDA			<b>Building Number</b> -			
<b>Revisions:</b>		<b>Date</b>							<b>Date</b> APRIL 2013		<b>Checked</b>			<b>Drawn</b>		<b>Drawing Number</b> AS110ALT Dwg. 1 of 2	