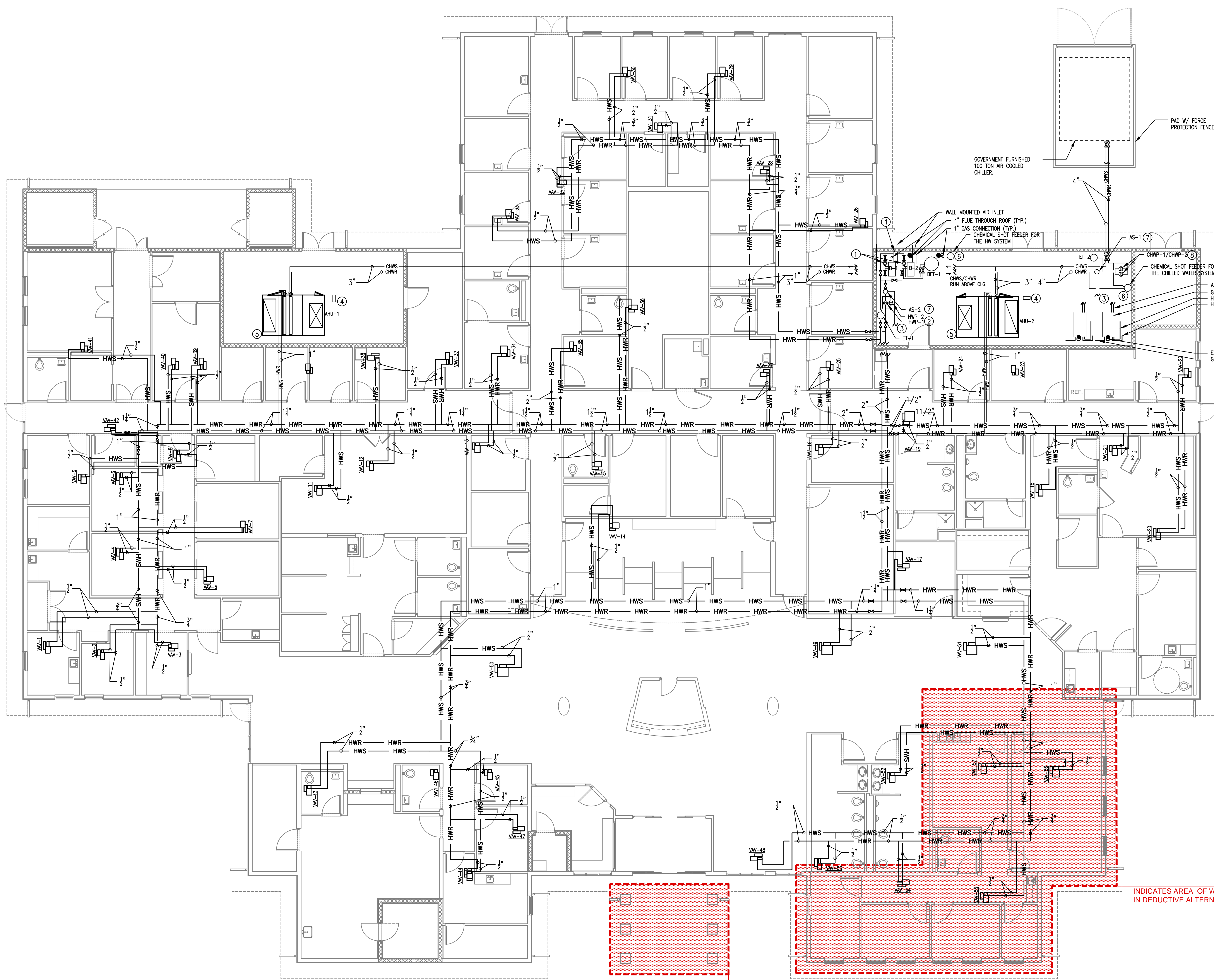


three inches = one foot  
one and one half inches = one foot  
one inch = one foot  
three quarters inch = one foot  
one half inch = one foot  
three eighths inch = one foot  
one quarter inch = one foot  
one eighth inch = one foot  
one eighth inch = one foot



**NOTE:**

ABOVE CEILING SPACES ARE DESIGNED TO PROVIDE AMPLE SPACE FOR DUCTWORK AND PIPING. HVAC CONTRACTOR TO COORDINATE DUCT AND PIPING LOCATIONS WITH OTHER TRADES.

ALL HOT WATER VALVES ARE TO BE 2-WAY EXCEPT 3-WAY FOR VAV-3, 20, 33, 44, 48.

- KEY NOTE:**
- 1 PRIMARY HOT WATER CIRCULATOR, FURNISHED BY CONDENSING BOILER MANUFACTURER (TYP.).
  - 2 FOR HOT WATER INLINE PUMP CONNECTION DETAILS SEE MH006 THE HOT WATER PIPING SCHEMATIC DIAGRAM.
  - 3 CONNECT TO 1/2" MAKE-UP WATER LINE WITH A BACKFLOW PREVENTER.
  - 4 AHU-1 PANEL OR AHU-2 PANEL ON SITE.
  - 5 AHU-1 OR AHU-2 SHALL BE SET ON A 3" CONCRETE PAD. THE PAD SHALL BE 3" WIDER THAN AHU PLAN DIMENSIONS.
  - 6 CHEMICAL POT FEEDER, SEE MH006 FOR PIPING CONNECTION DETAILS.
  - 7 SEE MH006 FOR AIR SEPARATE PIPING CONNECTION DETAILS.
  - 8 FOR CHILLED WATER INLINE PUMP CONNECTION DETAILS SEE MH006 THE CHILLED WATER PIPING SCHEMATIC DIAGRAM.




**HVAC HYDRONIC PLAN**  
SCALE: 1/8" = 1'-0"

Updated

INDICATES AREA OF WORK INCLUDED IN DEDUCTIVE ALTERNATE #7

INDICATES AREA OF WORK INCLUDED IN DEDUCTIVE ALTERNATE #10

FINAL SUBMISSION / FULLY SPRINKLERED

		<b>CONSULTANTS:</b>				<b>ARCHITECT/ENGINEERS:</b>				<b>Drawing Title</b> HVAC HYDRONICS PLAN DEDUCTIVE ALTERNATE #11		<b>Project Title</b> CONSTRUCT VA OUTPATIENT CLINIC, PANAMA CITY		<b>Project Number</b> 520-326		<b>Office of Construction and Facilities Management</b>  <b>Department of Veterans Affairs</b>			
		CIVIL: KENNETH HORNE & ASSOCIATES 7201 NORTH 9TH AVENUE, STE. 6 PENSACOLA, FLORIDA 32504 PH: (850) 471-9005 FX: (850) 471-0093		COMM/DES: SCHMIDT CONSULTING GROUP, INC. 40 S. PALAFOX PLACE, STE. 300 PENSACOLA, FLORIDA 32502 PH: (850) 438-0050 FX: (850) 432-8631		BES DESIGN/BUILD, LLC 766 Middle St, Fairhope, AL 36532 Phone: 251.990.5778 Fax: 251.990.3716		Approved Project Director		Location PANAMA CITY, FLORIDA		<b>Building Number</b> -		<b>Drawing Number</b> MP001A11					
		LANDSCAPE ARCHITECT: CSA GROUP, INC. 6300 PICCADILLY SQUARE DRIVE MOBILE, ALABAMA 36609 PH: (251) 344-4023 FX: (251) 344-4052		SURVEYORS: KCI TECHNOLOGIES, INC. 10401 HIGHLAND MANOR DRIVE, SUITE 120 TAMPA, FLORIDA 33610 PH: (813) 740-2300						Date APRIL 2013		Checked GL		Drawn TF				Dwg. 4 of 4	
<b>Revisions:</b>		<b>Date</b>																	