CONSULTANTS:

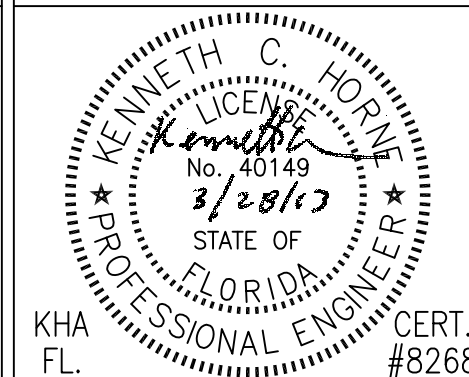
CIVIL:
KENNETH HORNE & ASSOCIATES
7201 NORTH 9TH AVENUE, STE. 1
PENSACOLA, FLORIDA 32504
PH: (850) 471-9005
FX: (850) 471-0093

LANDSCAPE ARCHITECT:
CSA GROUP, INC.
6300 PICCADILLY SQUARE DRIVE
MOBILE, ALABAMA 36609
PH: (251) 344-4023
FX: (251) 344-4052

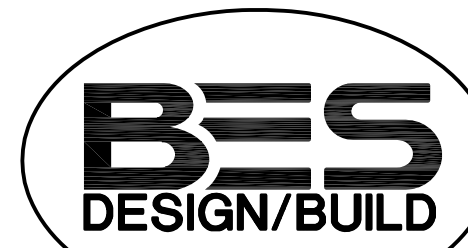
COMM/IDS:
SCHMIDT CONSULTING GROUP, INC.
40 S. PALAFOX PLACE, STE. 300
PENSACOLA, FLORIDA 32502
PH: (850) 438-0050
FX: (850) 432-8631

SURVEYORS:
KCI TECHNOLOGIES, INC.
10401 HIGHLAND MANOR DRIVE, S
TAMPA, FLORIDA 33610
PH: (813) 740-2300

SURVEYORS:
KCI TECHNOLOGIES, INC.
10401 HIGHLAND MANOR DRIVE, SUITE 120
TAMPA, FLORIDA 33610
PH: (813) 740-2300



ARCHITECT/ENGINEERS:



BES DESIGN/BUILD, LLC
766 Middle St, Fairhope, AL 36532
Phone: 251.990.5778 Fax: 251.990.3716

	Drawing Title
--	---------------

SITE DETAILS

Approved: Project Director

Project Title	PANAMA CITY OUTPATIENT CLINIC VA GULF COAST HEALTH CARE
---------------	---

Location	PANAMA CITY, FLORIDA
----------	----------------------

Date
MARCH 2015

Checked
KCH

	Drawing Number

CS501

Dwg 6 of 21

Office of
Construction
and Facilities
Management

