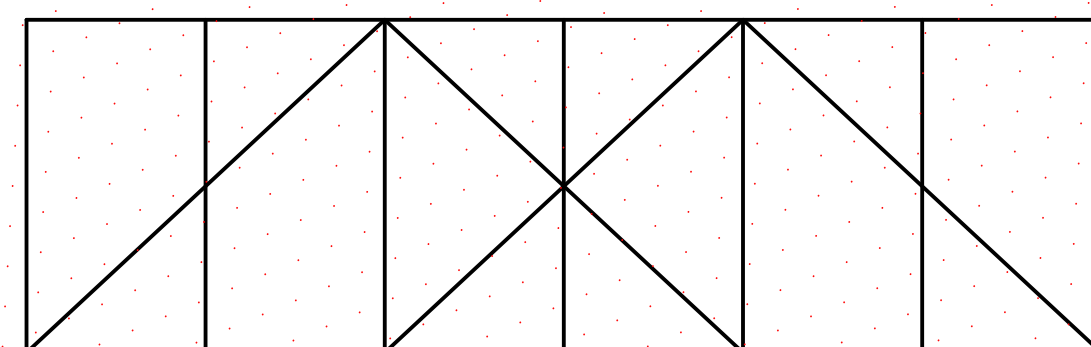


2 ELEVATION
N.T.S.

NOTE: NO FABRIC SHOWN IN FRONT OF BACK FRAME FOR CLARITY. PROVIDE BRACE @ MID POINT EA. SIDE OF GATE WITH 3/8" DIA. TRUSS ROD IN BOTT. HALF (NOT SHOWN FOR CLARITY)

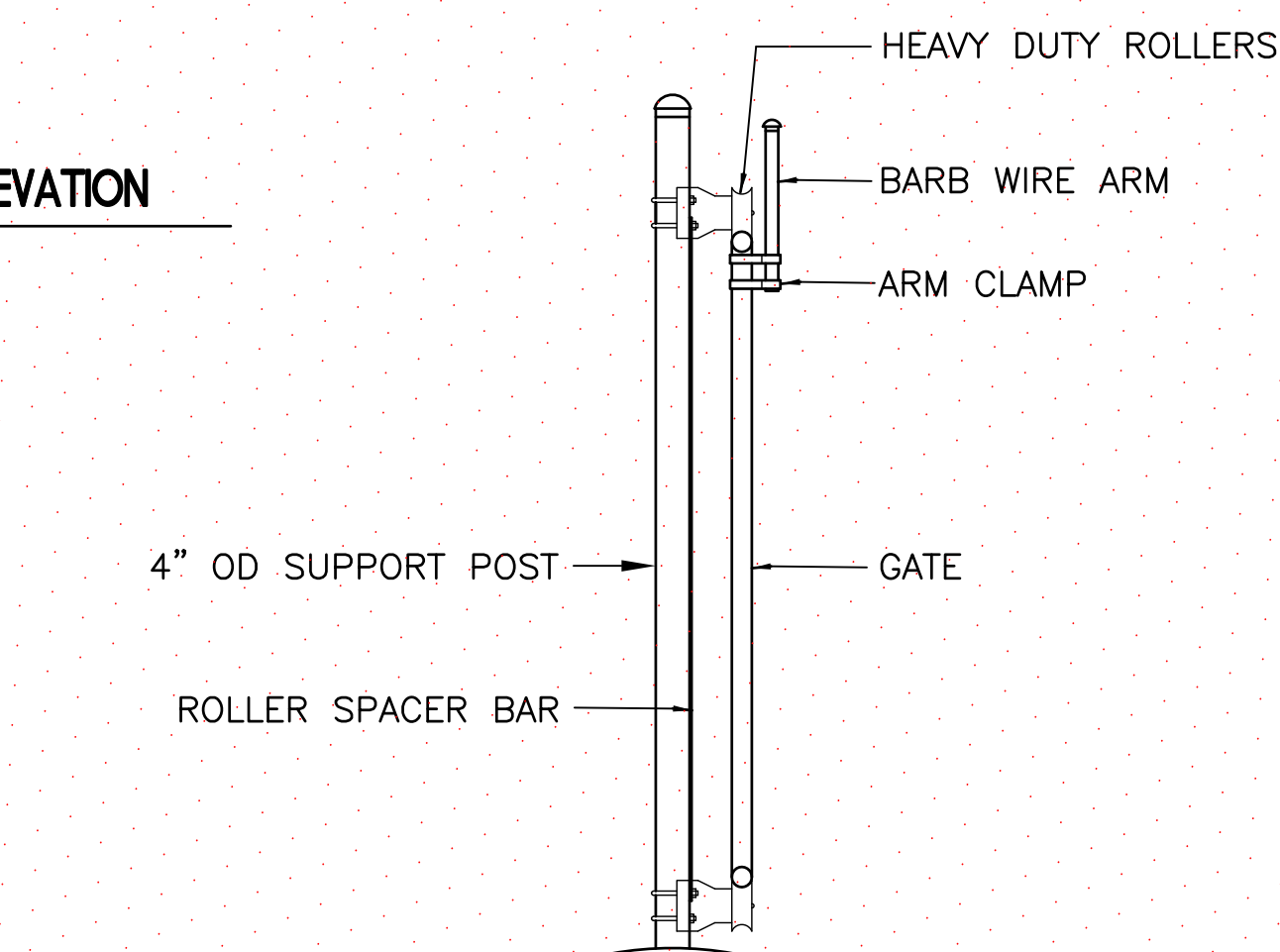
GATE OPENING	GATE FRAME	BACK FRAME
25'-4"	13'-3"	14'-2"
31'-4"	16'-3"	14'-2"



GATE FRAME DIAGRAM (PER GATE LEAF)

SEE ELEVATION 2, THIS SHEET FOR ADDITIONAL NOTES.
SEE CS101 FOR LOCATION.

INDICATES DEDUCTIVE ALTERNATE

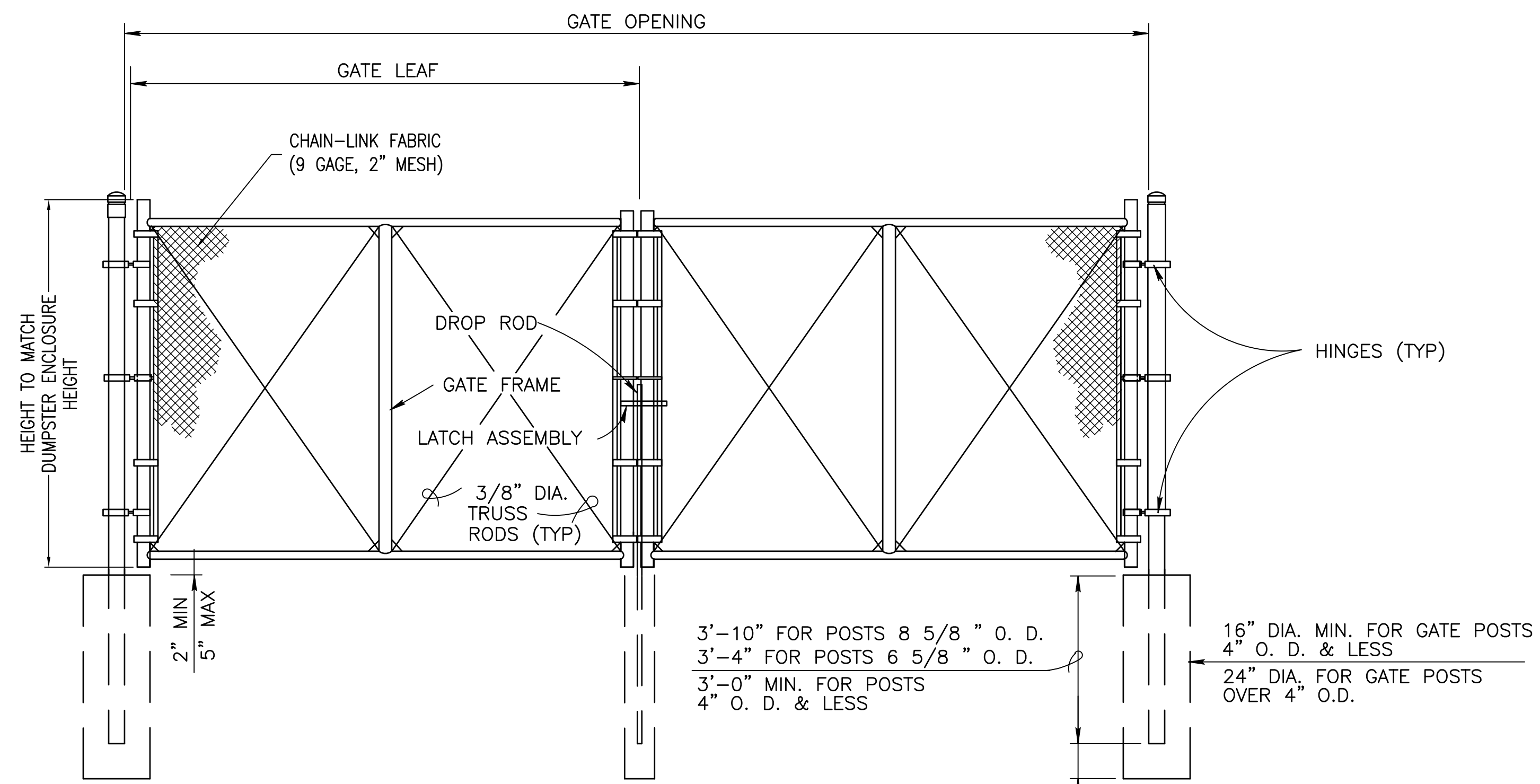


4 SECTION
N.T.S.

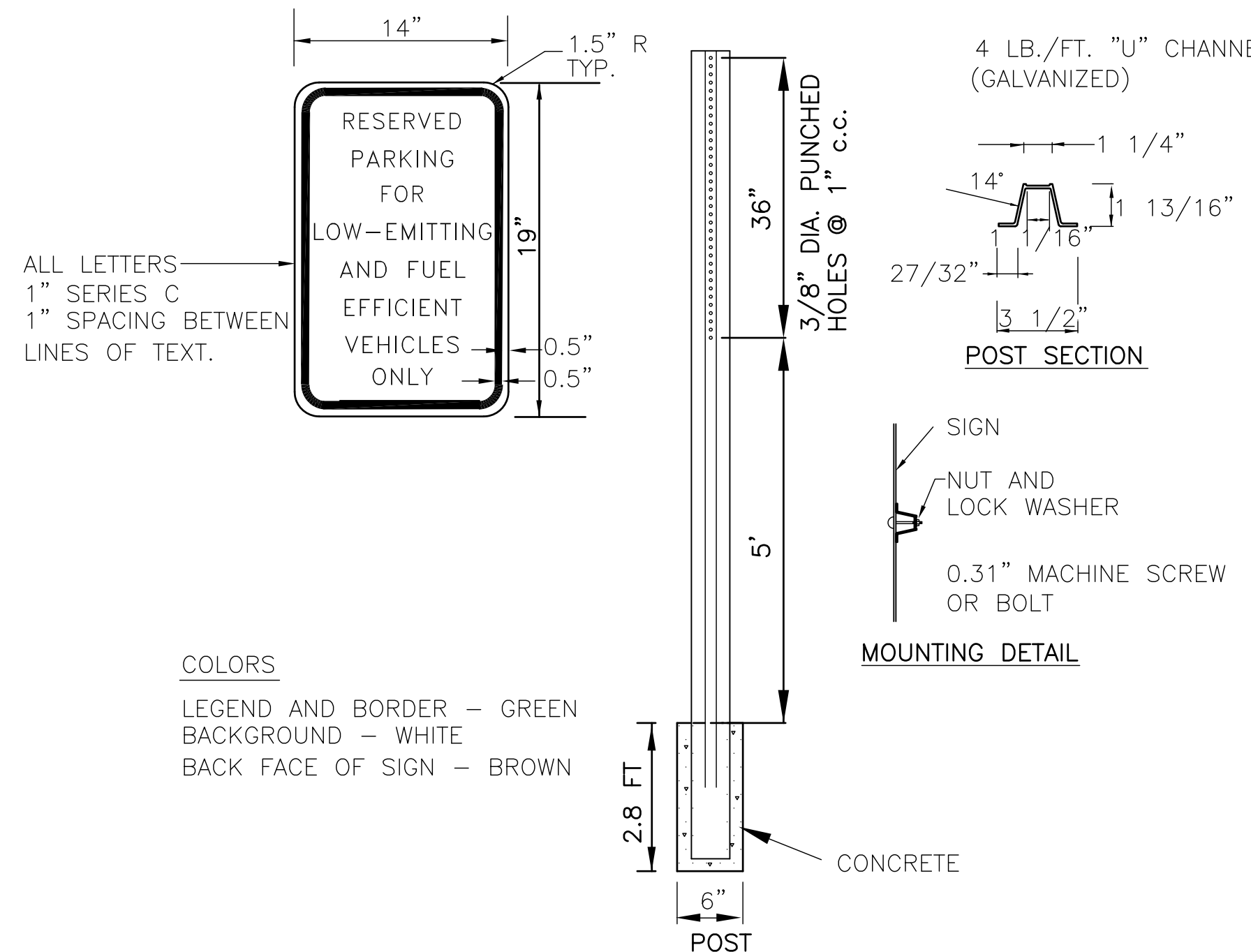
A1 CANTILEVERED SLIDING GATE DETAIL
CS101 N.T.S.

DUMPSTER ENCLOSURE GATE POST SCHEDULE	
GATE LEAF WIDTH (NOMINAL)	OUTSIDE DIMENSION (NOMINAL)
6' OR LESS	2.875" OD
MORE THAN 6' TO 12'	2.5" SQ
MORE THAN 12' TO 18'	4.0" OD
MORE THAN 18'	6.625" OD
MORE THAN 18'	8.625" OD

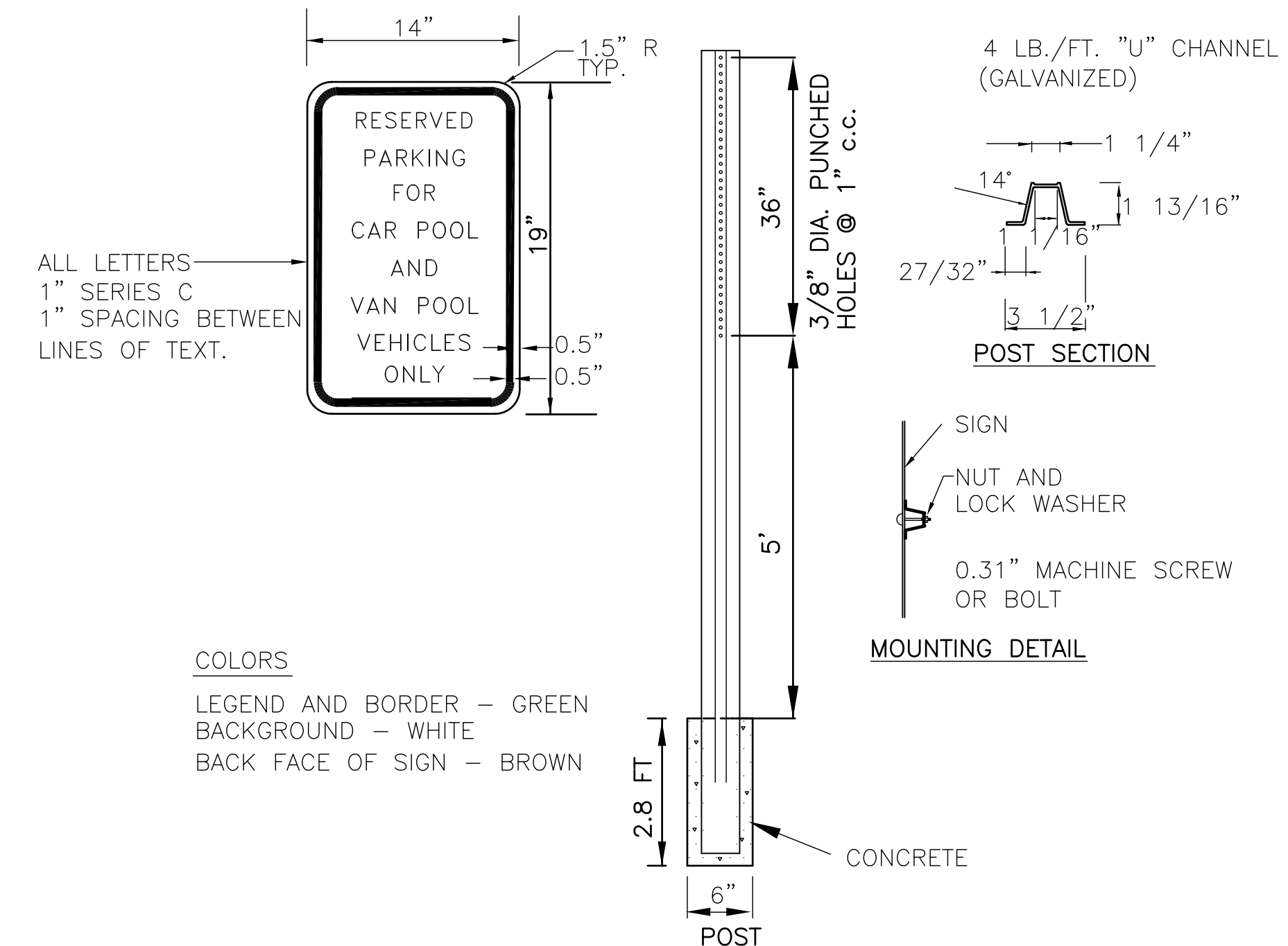
NOTE: ALL DUMPSTER ENCLOSURE GATE HARDWARE, POSTS AND FABRIC TO BE BROWN PVC COATED.



C7 DUMPSTER ENCLOSURE GATE DETAIL
CS101 N.T.S.
CS502



F6 LOW-EMITTING & FUEL EFFICIENT SIGN DETAIL
CS101 N.T.S.



F8 CAR POOL / VAN POOL SIGN DETAIL
CS101 N.T.S.

FINAL SUBMISSION / FULLY SPRINKLERED

CONSULTANTS: CIVIL: KENNETH HORNE & ASSOCIATES 7201 NORTH 9TH AVENUE, STE. 6 PENSACOLA, FLORIDA 32504 PH: (850) 471-9005 FX: (850) 471-0093 LANDSCAPE ARCHITECT: CSA GROUP, INC. 6300 PICCADILLY SQUARE DRIVE MOBILE, ALABAMA 36609 PH: (251) 344-4023 FX: (251) 344-4052 COMM/IDS: SCHMIDT CONSULTING GROUP, INC. 40 S. PALAFOX PLACE, STE. 300 PENSACOLA, FLORIDA 32502 PH: (850) 438-0050 FX: (850) 432-8631 SURVEYORS: KCI TECHNOLOGIES, INC. 10401 HIGHLAND MANOR DRIVE, SUITE 120 TAMPA, FLORIDA 33610 PH: (813) 740-2300		ARCHITECT/ENGINEERS: BES DESIGN/BUILD BES DESIGN/BUILD, LLC 766 Middle St, Fairhope, AL 36532 Phone: 251.990.5778 Fax: 251.990.3716		Drawing Title SITE DETAILS Approved Project Director		Project Title PANAMA CITY OUTPATIENT CLINIC VA GULF COAST HEALTH CARE Location PANAMA CITY, FLORIDA Date MARCH 2018 Checked KCH Drawn LFR		Project Number 520-326 Building Number - Drawing Number CS503 Dwg 8 of 21		Office of Construction and Facilities Management Department of Veterans Affairs	
---	--	---	--	--	--	---	--	--	--	---	--