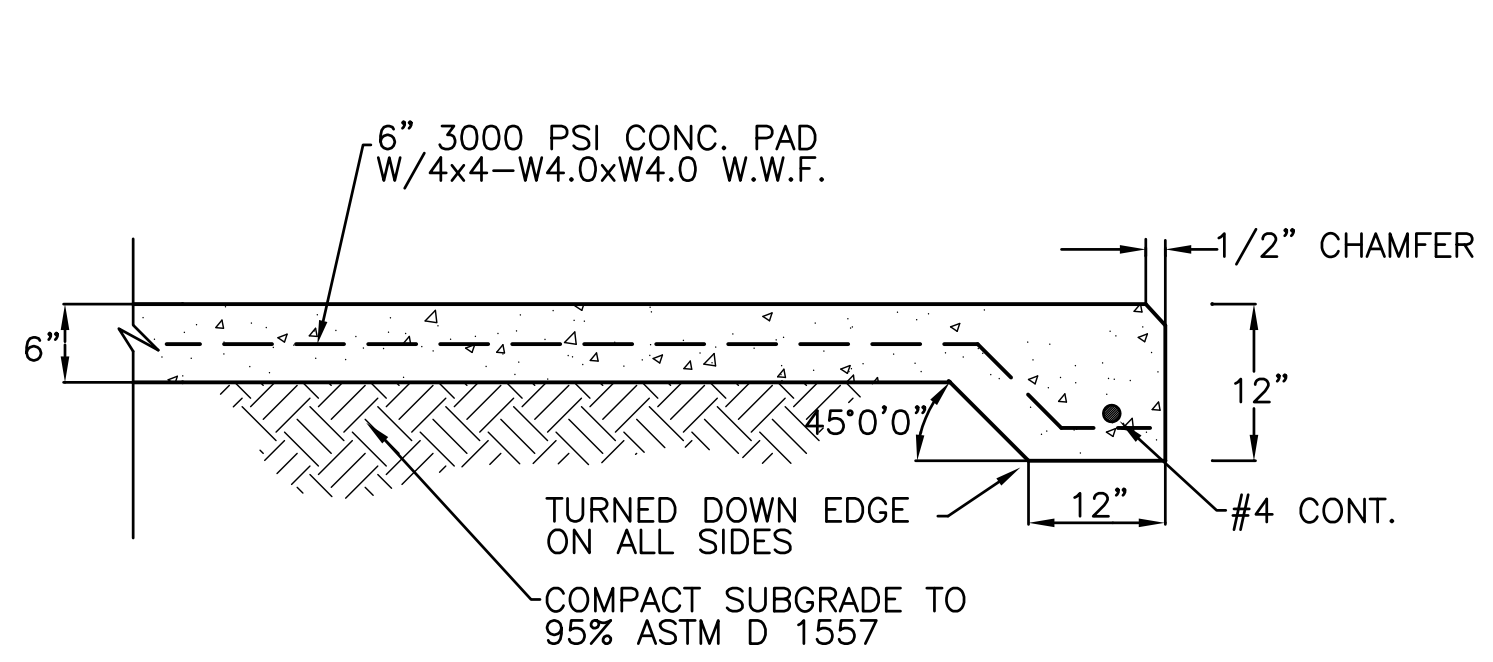
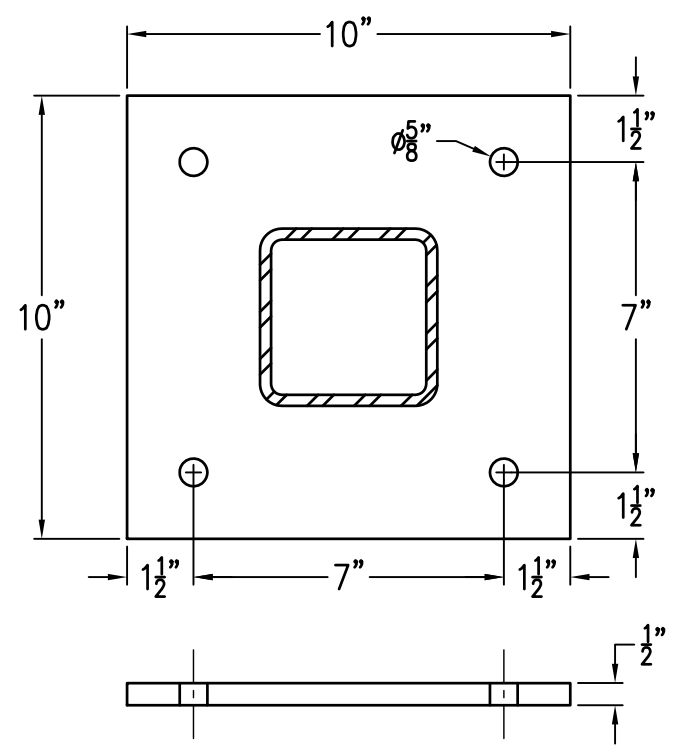


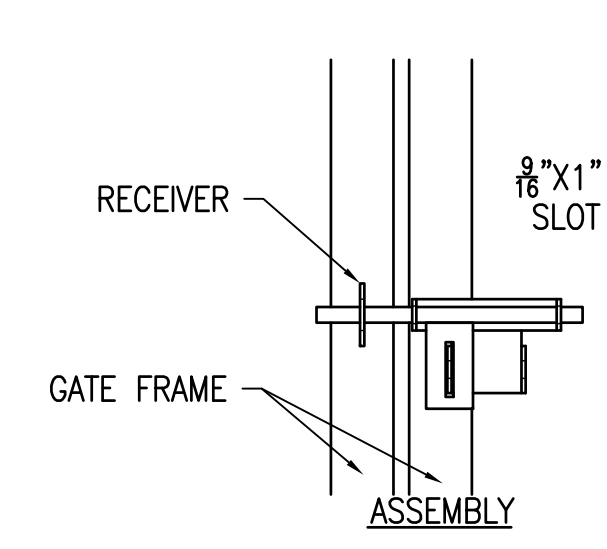
three inches = one foot
one and one half inches = one foot
one inch = one foot
three quarters inch = one foot
one half inch = one foot
three eighths inch = one foot
one quarter inch = one foot
one eighth inch = one foot



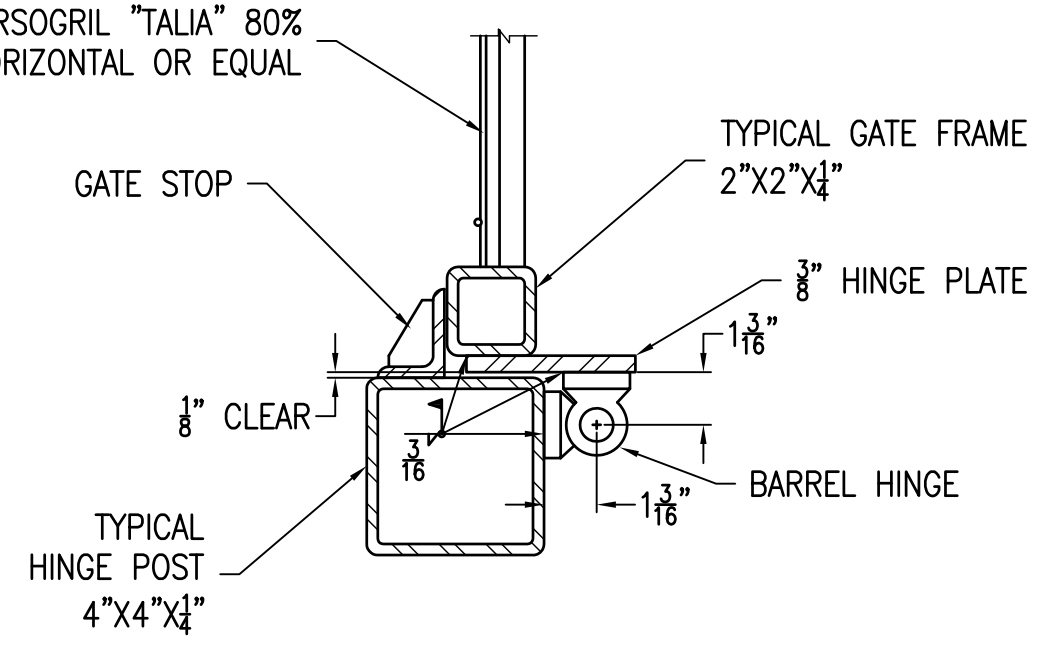
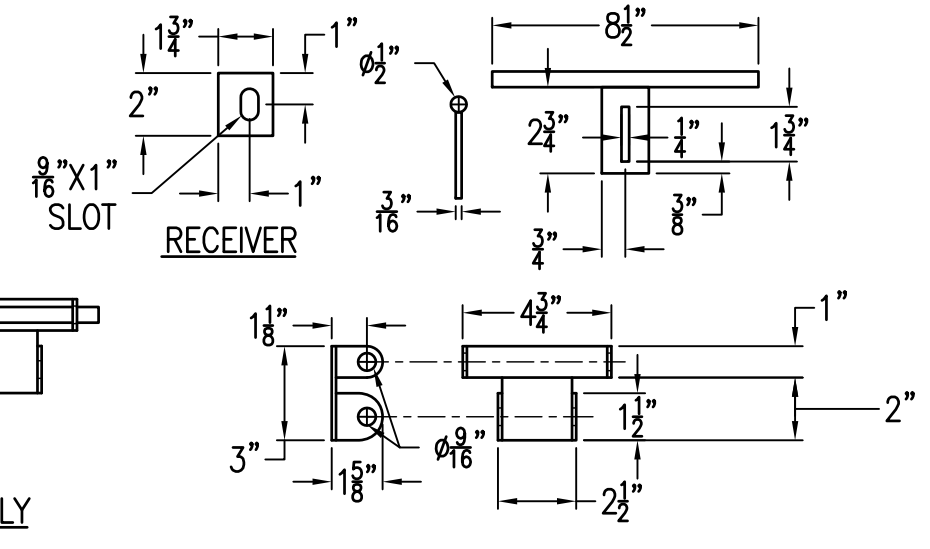
A2 MECHANICAL YARD CONCRETE PAD DETAIL
CS505 N.T.S.



B1 TYPICAL BASE PLATE DETAIL
CS505 N.T.S.

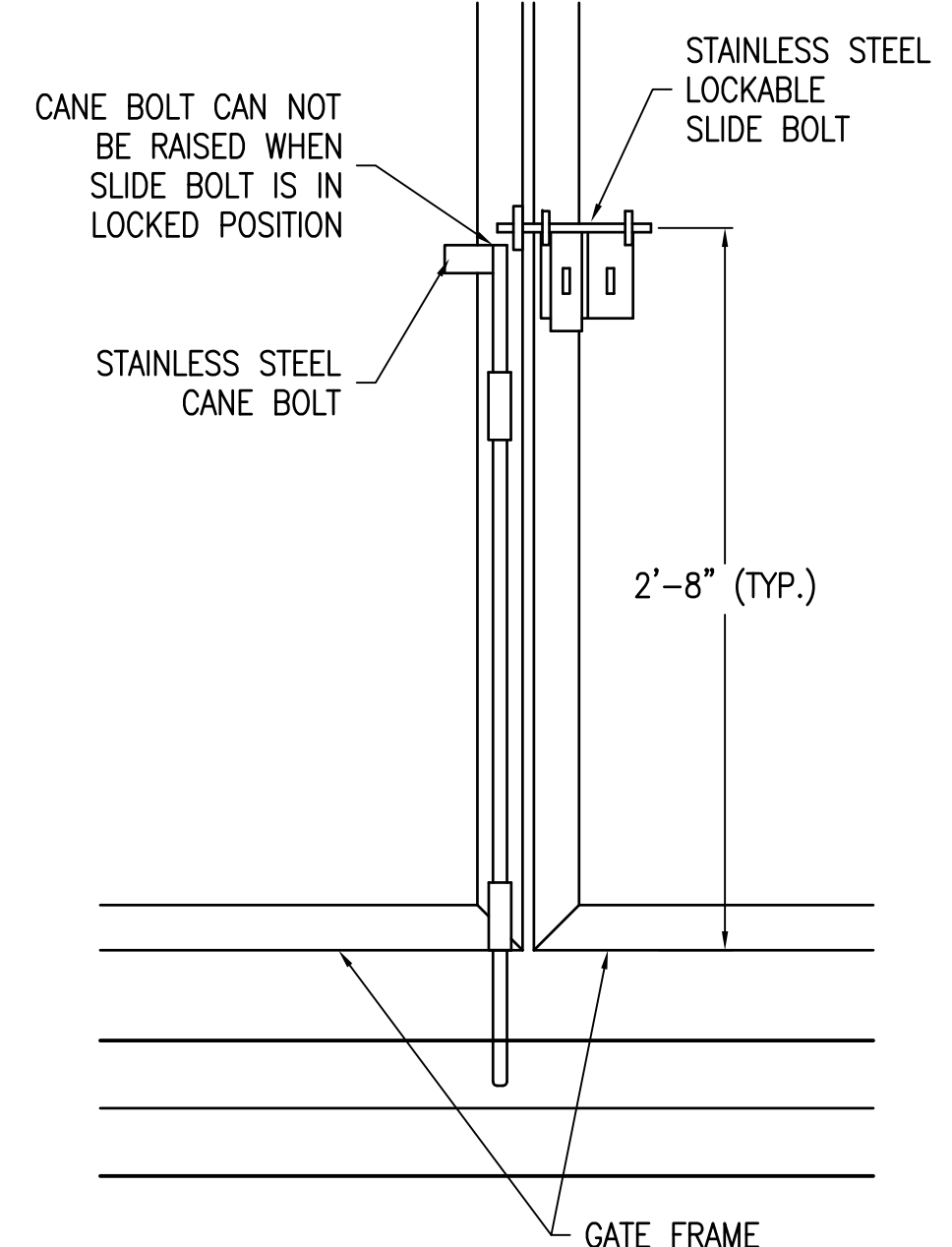
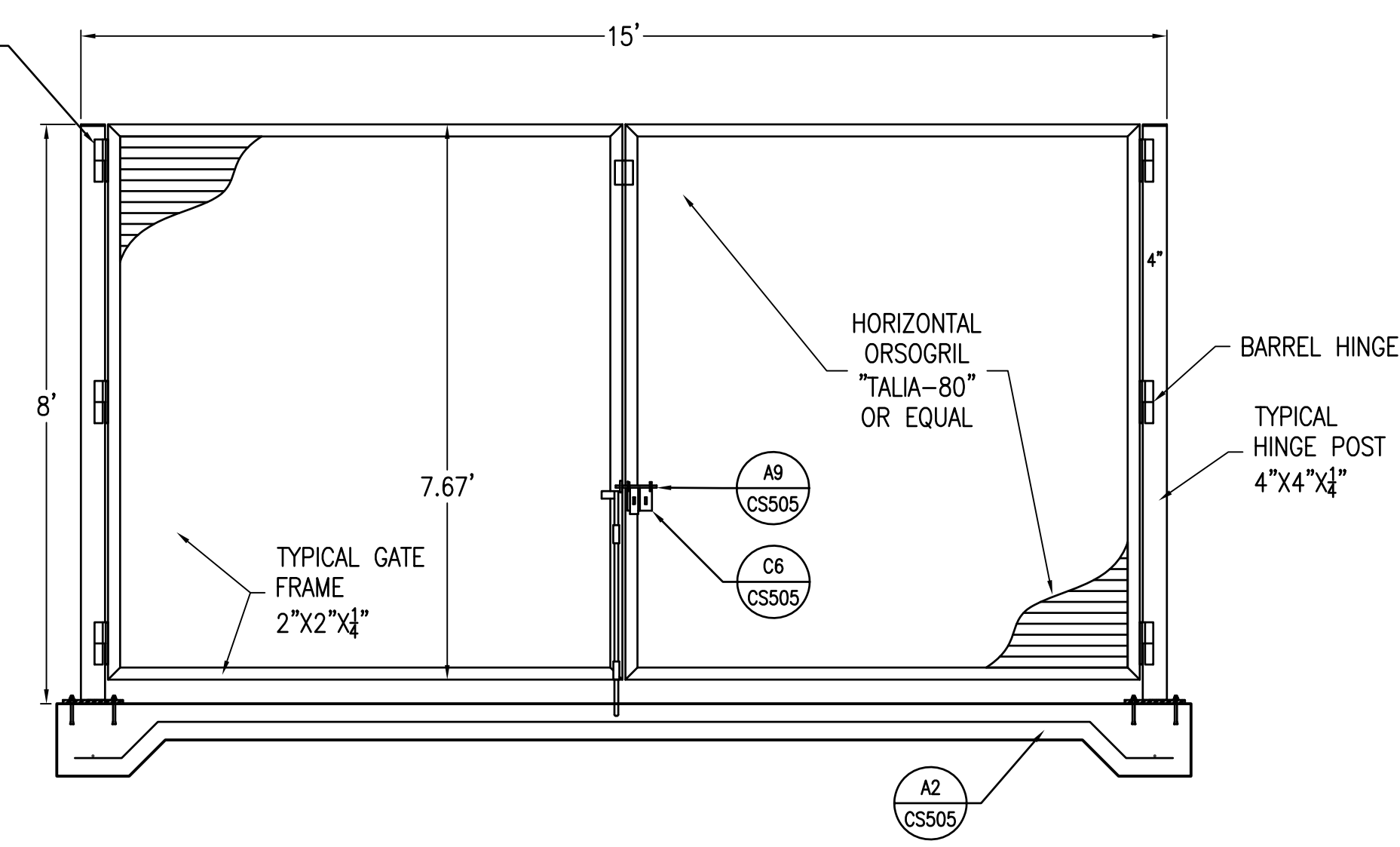


C6 LOCKABLE SLIDE HASP
CS505 N.T.S.



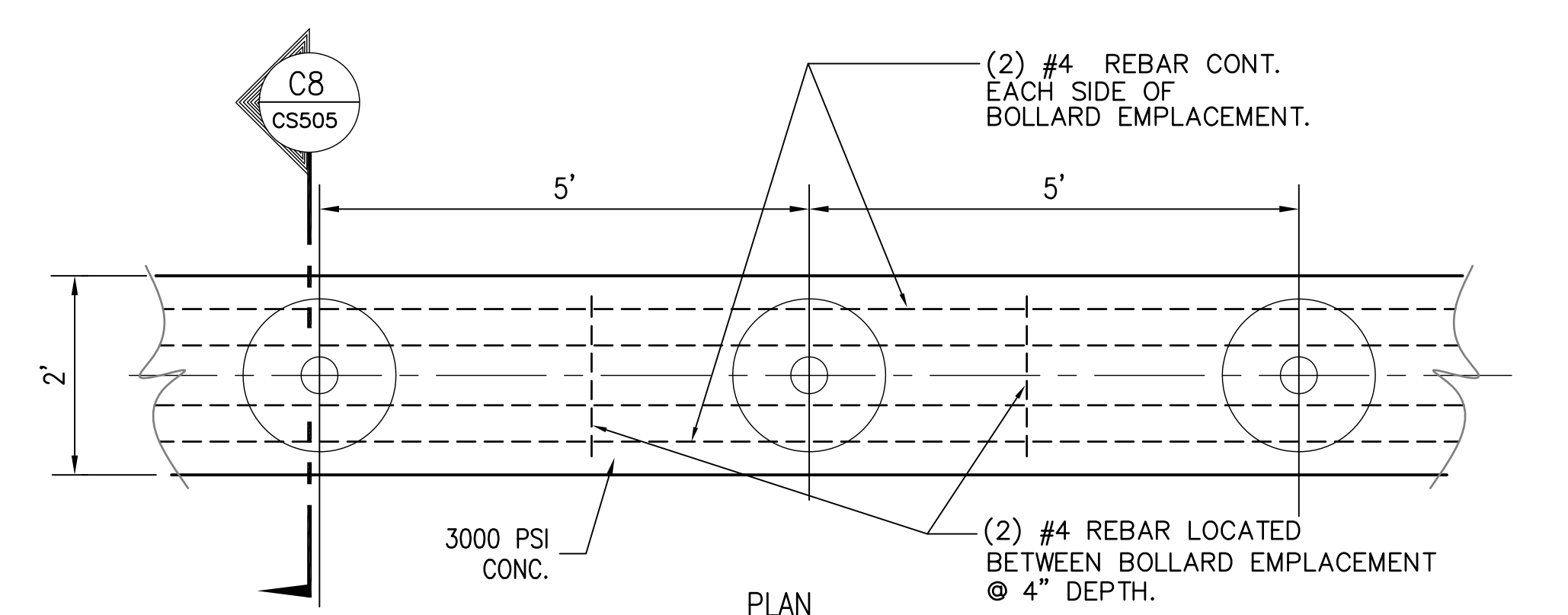
C4 GATE HINGE DETAIL
CS505 N.T.S.

A4 GATE DETAIL
CS505 N.T.S.

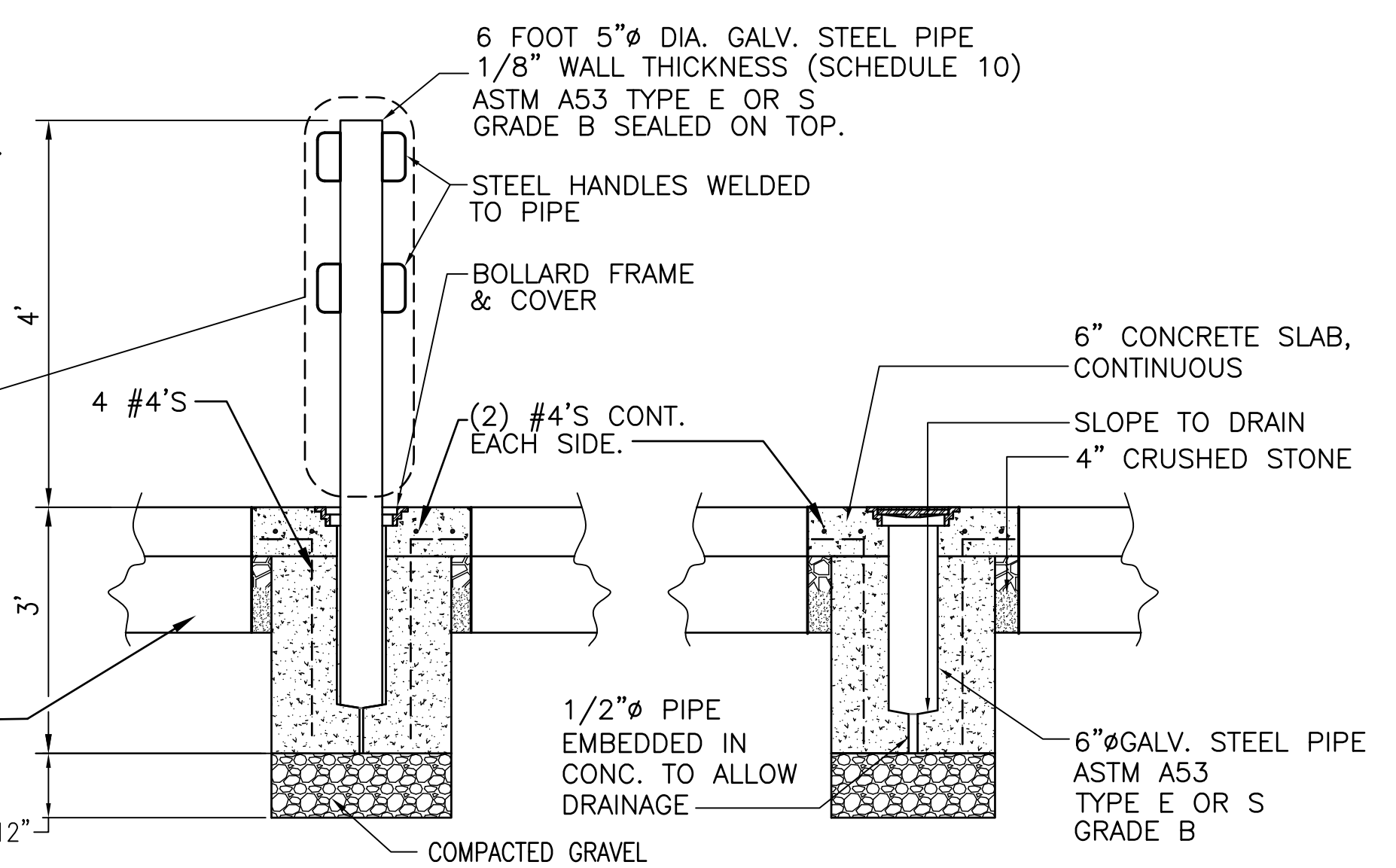
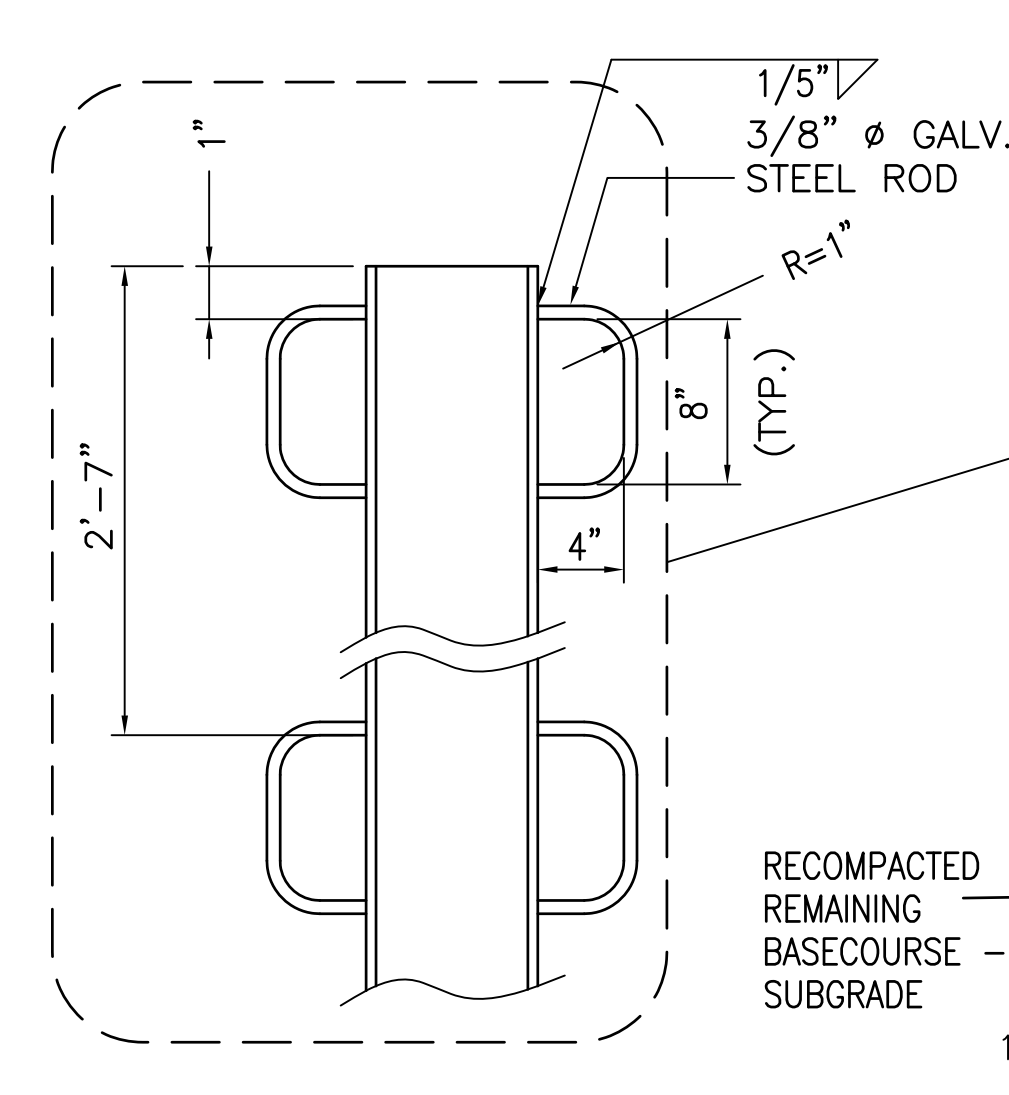


A9 BOLT VERTICAL CANE
CS505 N.T.S.

REMOVABLE BOLLARD NOTES:
1. BOLLARD STORAGE AREAS SHOWN SHALL CONSIST OF ENOUGH BOLLARD SLEEVES TO ALLOW FOR THE UPRIGHT STORAGE OF ALL ADJACENT BOLLARDS. BOLLARD STORAGE DETAILS ARE SIMILAR TO BOLLARD EMPLACEMENT DETAILS, EXCEPT SPACING WILL BE @ 2'-0" O.C.
2. REMOVABLE BOLLARD WEIGHT NOT TO EXCEED 50 LBS.

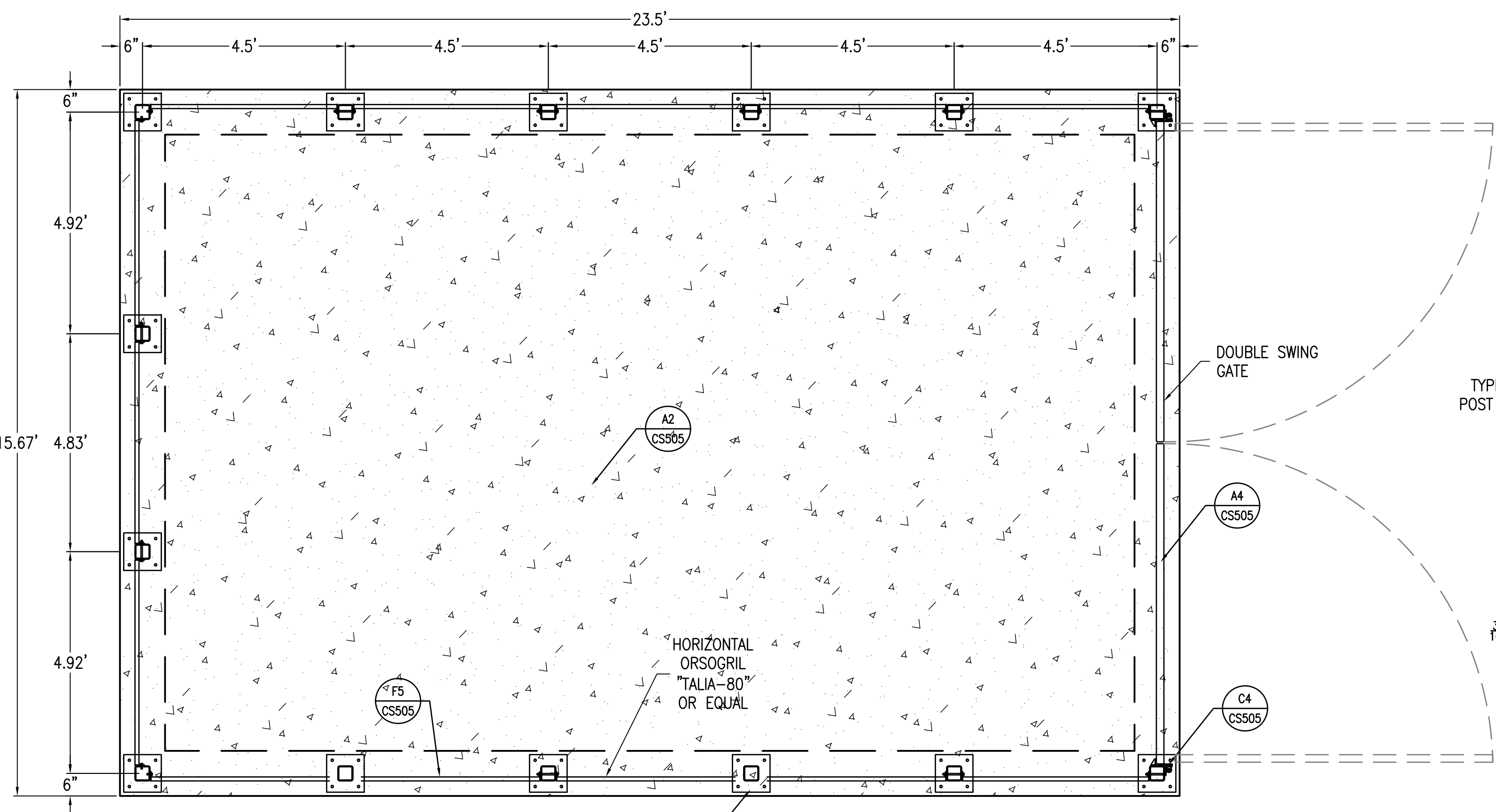


A6 REMOVABLE BOLLARD EMPLACEMENT DETAIL
CS505 N.T.S.

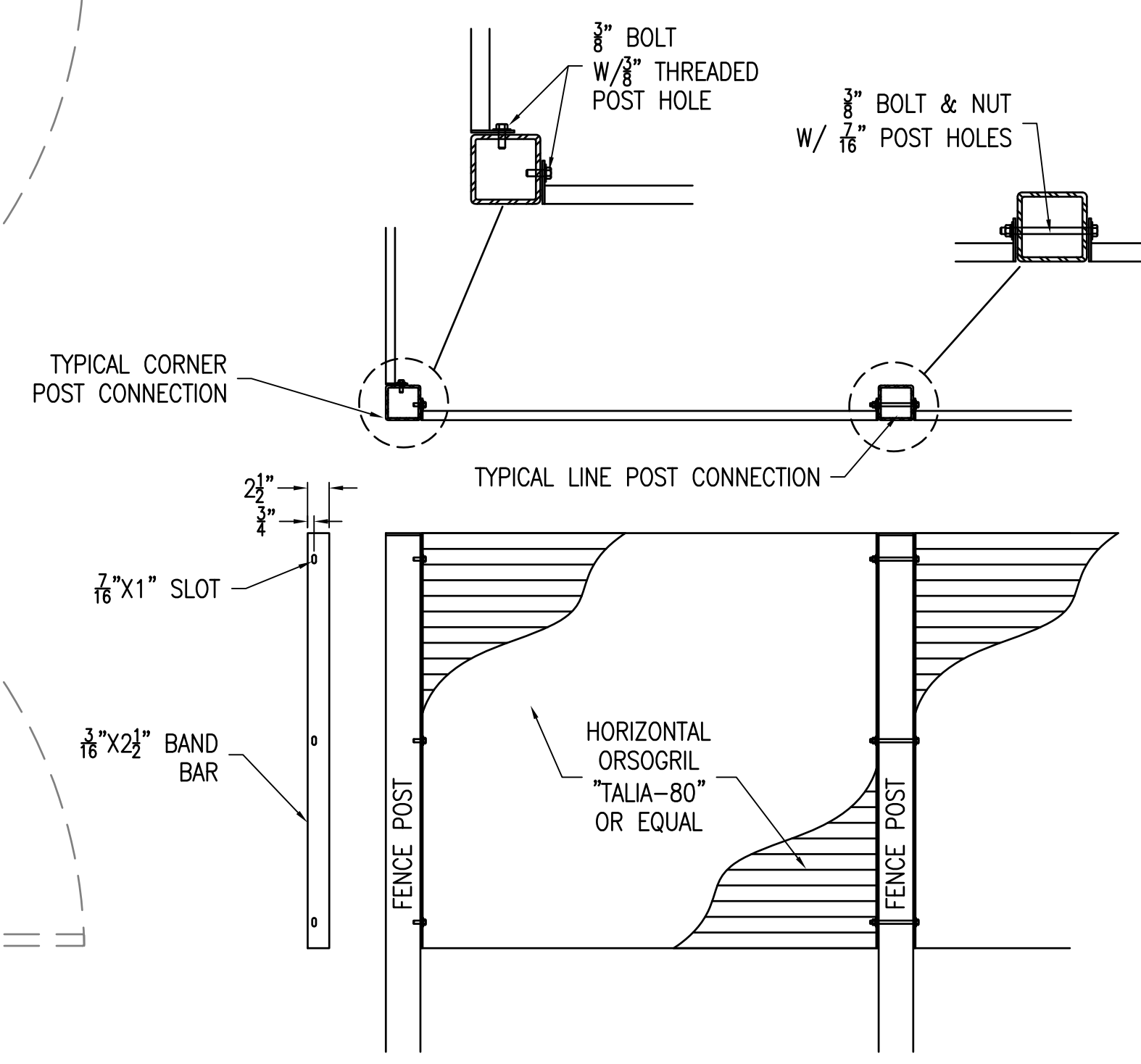


"BOLLARD IN PLACE" "COVER IN PLACE"

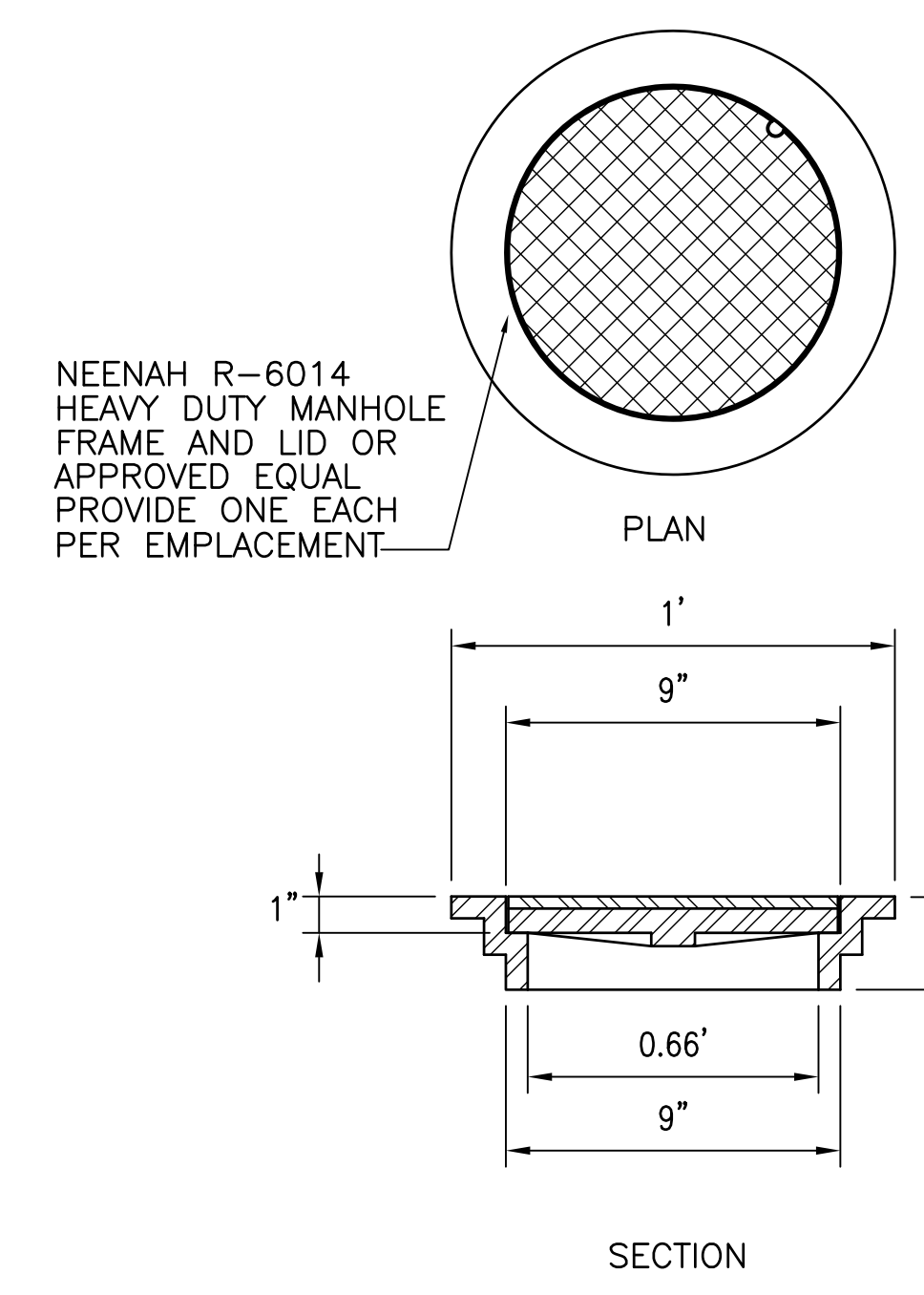
C8 SECTION
CS505 N.T.S.



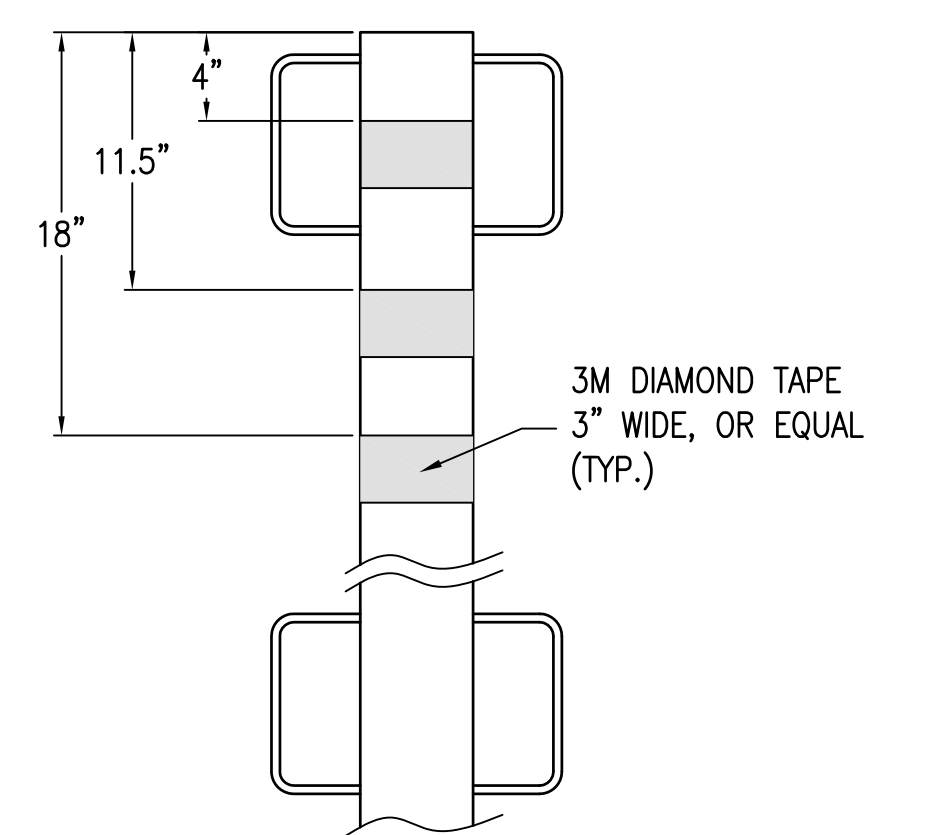
F2 VA MECHANICAL YARD WITH ENCLOSURE
CS101 N.T.S.





F5 LOUVER PANELS TO POST CONNECTION DETAIL
CS505 N.T.S.



F8 BOLLARD FRAME AND COVER
CS505 N.T.S.



F9 BOLLARD REFLECTIVE STRIPING
CS505 N.T.S.

		CONSULTANTS:				ARCHITECT/ENGINEERS:		<div><div>BES DESIGN/BUILD</div></div> <div>BES DESIGN/BUILD, LLC 766 Middle St, Fairhope, AL 36532 Phone: 251.990.5778 Fax: 251.990.3716</div>		<div>Drawing Title</div> <div>SITE DETAILS</div> <div>Approved Project Director</div>		<div>Project Title</div> <div>PANAMA CITY OUTPATIENT CLINIC VA GULF COAST HEALTH CARE</div>		<div>Project Number</div> <div>520-326</div> <div>Building Number</div> <div>-</div>		<div>Office of Construction and Facilities Management</div>			
		CIVIL: KENNETH HORNE & ASSOCIATES 7201 NORTH 9TH AVENUE, STE. 6 PENSACOLA, FLORIDA 32504 PH: (850) 471-9005 FX: (850) 471-0093		COMM/DES: SCHMIDT CONSULTING GROUP, INC. 40 S. PALAFOX PLACE, STE. 300 PENSACOLA, FLORIDA 32502 PH: (850) 438-0050 FX: (850) 432-8631								<div>Location</div> <div>PANAMA CITY, FLORIDA</div>		<div>Drawing Number</div> <div>CS505</div> <div>Dwg. 10 of 21</div>		<div>Department of Veterans Affairs</div>			
		LANDSCAPE ARCHITECT: CSA GROUP, INC. 6300 PICCADILLY SQUARE DRIVE MOBILE, ALABAMA 36609 PH: (251) 344-4023 FX: (251) 344-4052		SURVEYORS: KCI TECHNOLOGIES, INC. 10401 HIGHLAND MANOR DRIVE, SUITE 120 TAMPA, FLORIDA 33610 PH: (813) 740-2300								<div>Date</div> <div>MARCH 2013</div>		<div>Checked</div> <div>KCH</div>		<div>Drawn</div> <div>LRR</div>			
<div>Revisions</div>		<div>Date</div>																	