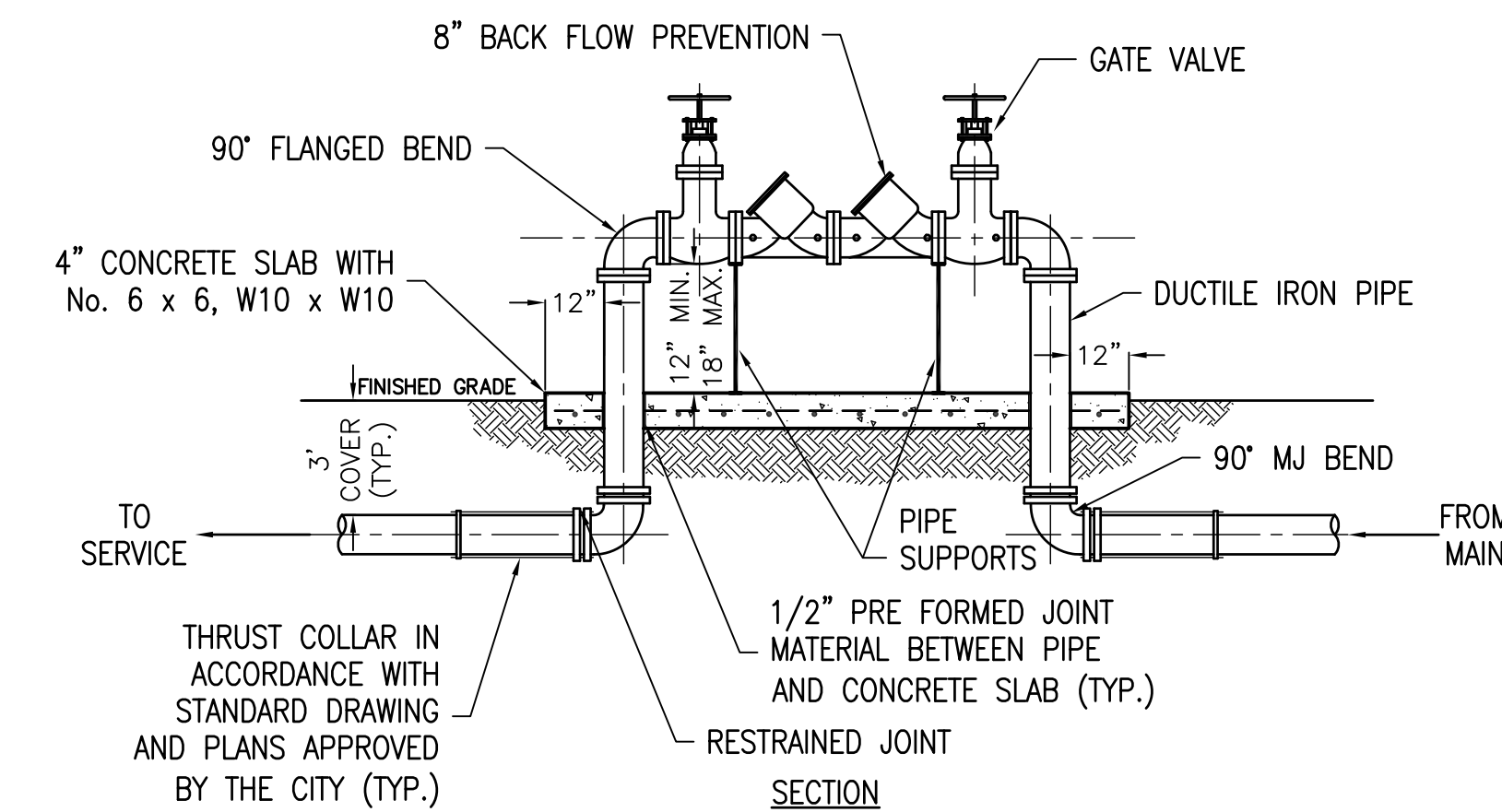
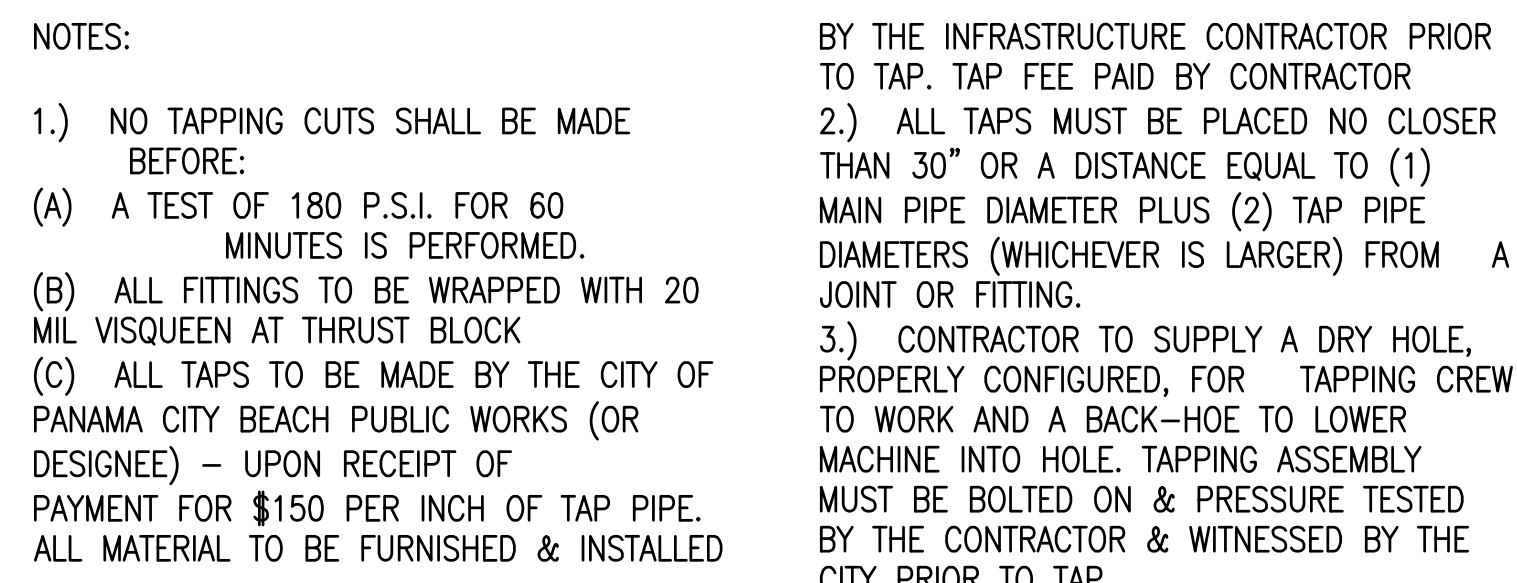


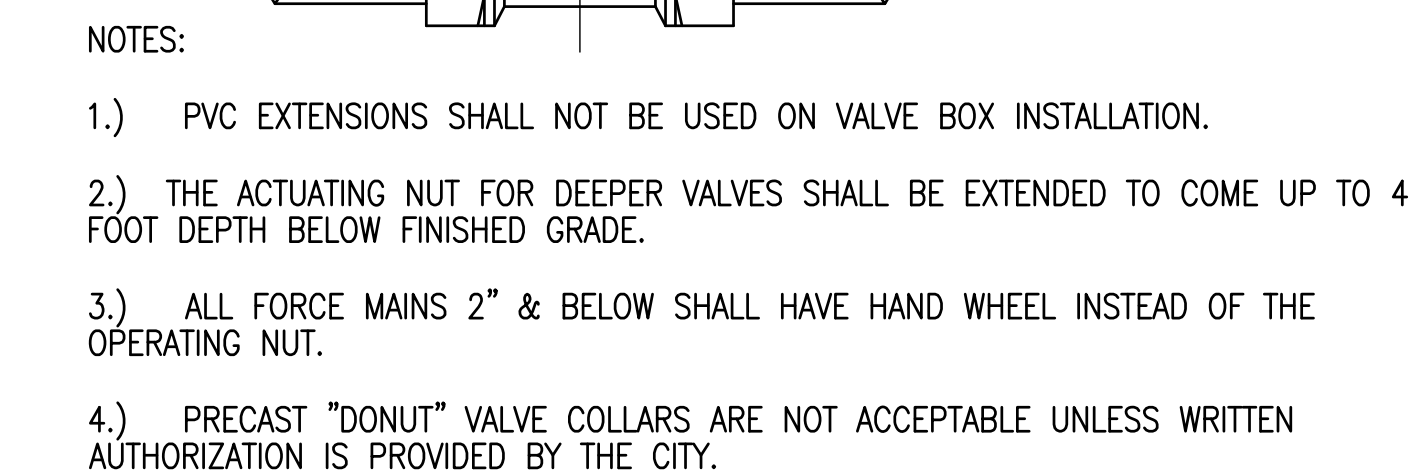
**A2 2" RPZ BACKFLOW PREVENTER DETAIL**  
CU101 N.T.S.



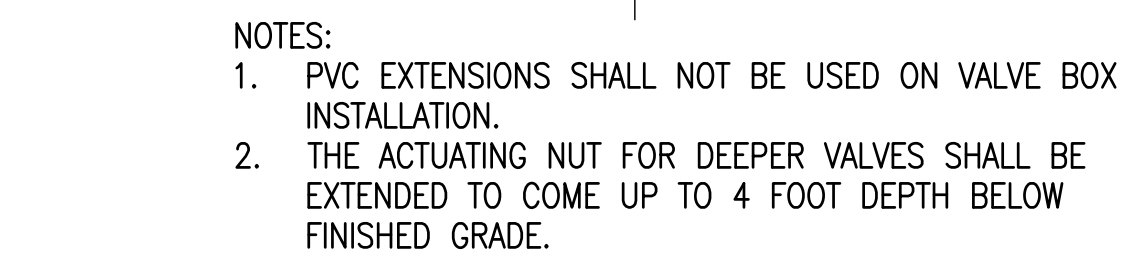
**A7 8" DOUBLE DETECTOR CHECK BACKFLOW PREVENTER DETAIL**  
CU101 N.T.S.



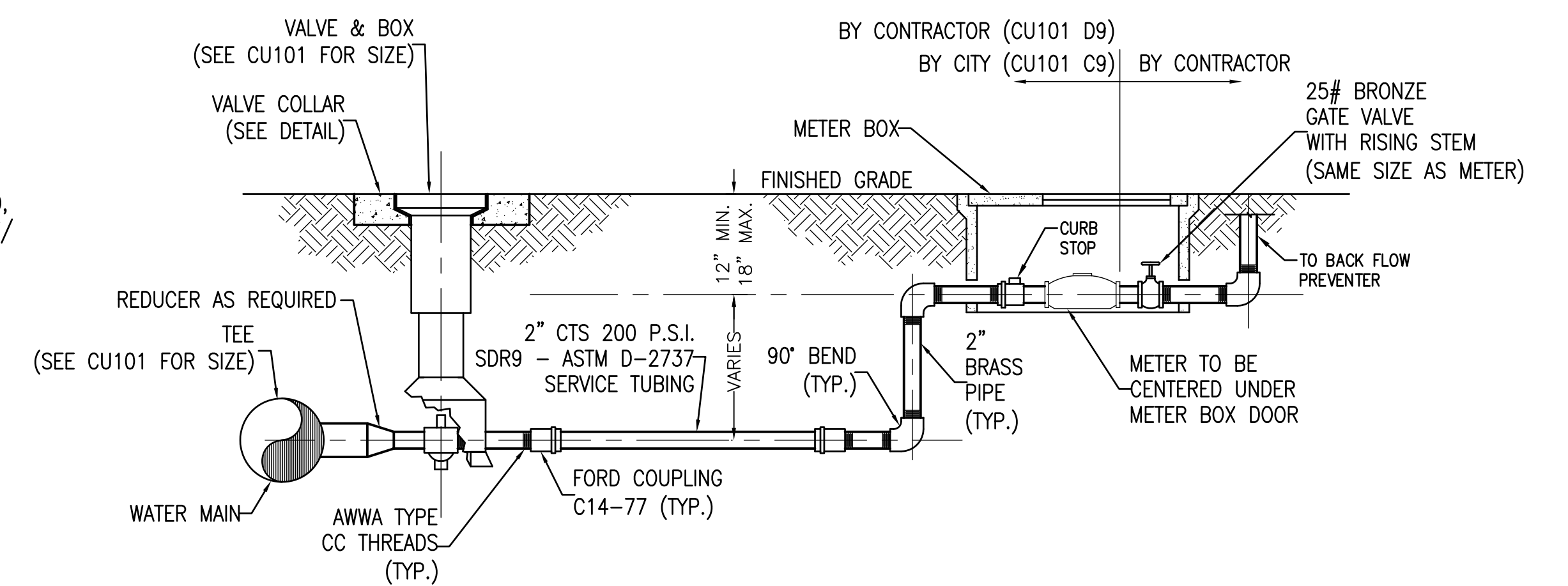
E2 TAPPING SLEEVE & VALVE DETAIL  
CU101 N.T.S.



E3 DUCTILE IRON GATE VALVE (SEWER) WITHIN PUBLIC R/W DETAIL  
CU101 N.T.S.



**E5** GATE VALVE (WATER) AT THE PUBLIC R/W DETAIL  
CU101 N.T.S.



F8 2" METER ASSEMBLY DETAIL  
CU101 N.T.S.

VA FORM 08-6231

CIVIL:  
KENNETH HORNE & ASSOCIATES  
7201 NORTH 9TH AVENUE, STE. 6  
PENSACOLA, FLORIDA 32504  
PH: (850) 471-9005  
FX: (850) 471-0093

LANDSCAPE ARCHITECT:  
CSA GROUP, INC.  
6300 PICCADILLY SQUARE DRIVE  
MOBILE, ALABAMA 36609  
PH: (251) 344-4023  
FX: (251) 344-4052

COMM/IDS:  
SCHMIDT CONSULTING GROUP, INC.  
40 S. PALAFOX PLACE, STE. 300  
PENSACOLA, FLORIDA 32502  
PH: (850) 438-0050  
FX: (850) 432-8631

SURVEYORS:  
KCI TECHNOLOGIES, INC.  
10401 HIGHLAND MANOR DRIVE, S  
TAMPA, FLORIDA 33610  
PH: (813) 740-2300

SURVEYORS:  
KCI TECHNOLOGIES, INC.  
10401 HIGHLAND MANOR DRIVE, SUITE 120  
TAMPA, FLORIDA 33610  
PH: (813) 740-2300



**BES**  
DESIGN/BUILD

**BES DESIGN/BUILD, LLC**  
**766 Middle St, Fairhope, AL 36532**  
**Phone: 251.990.5778 Fax: 251.990.3716**

Approved: Project Director

Drawn
LRR

CU502  
Dwg 14 of 21 Department of  
Veterans Affairs