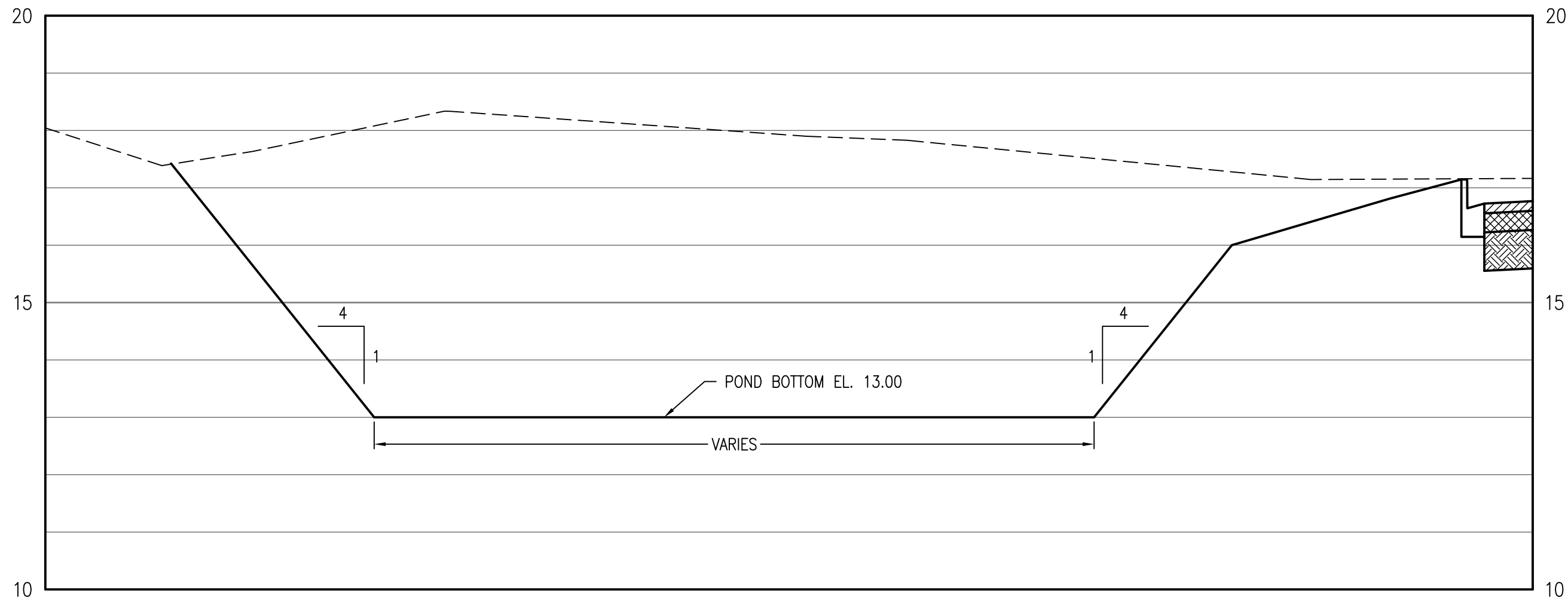
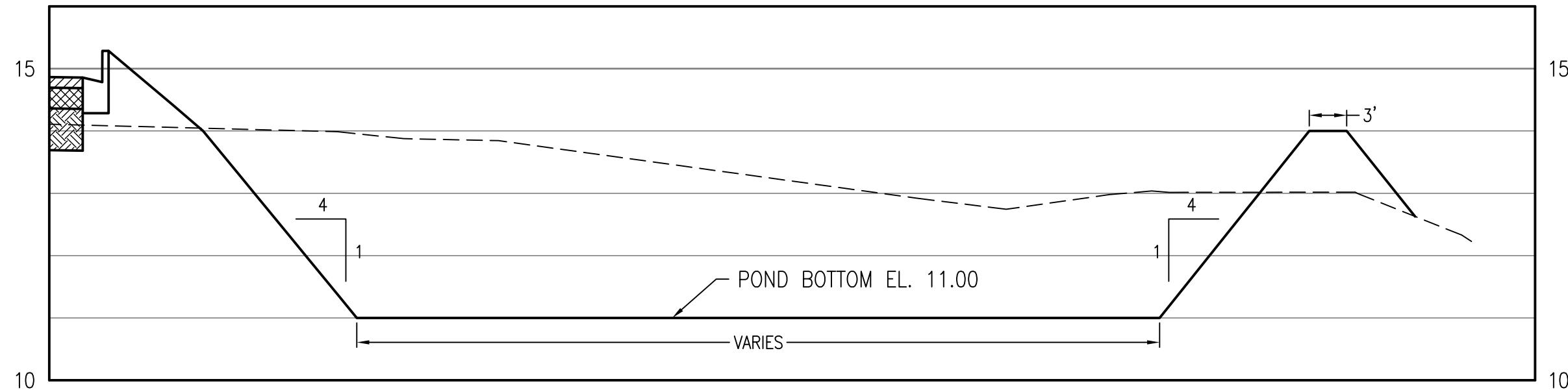


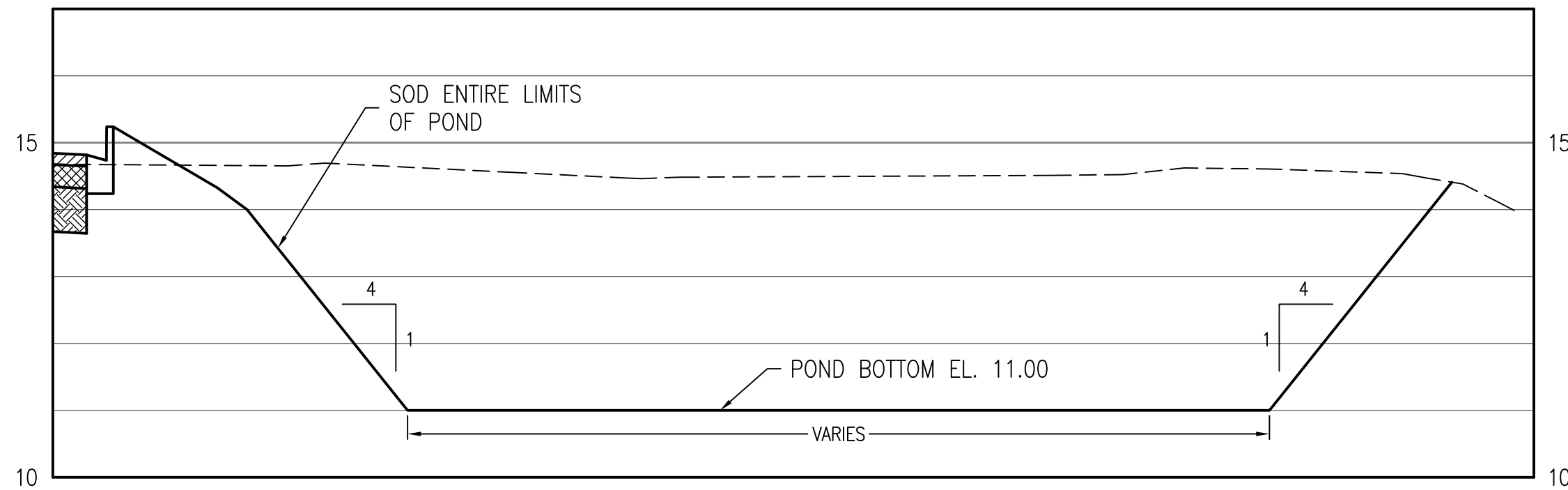
three inches = one foot
one and one half inches = one foot
one inch = one foot
one inch = one foot
three quarters inch = one foot
one half inch = one foot
one half inch = one foot
three eighths inch = one foot
one quarter inch = one foot
one eighth inch = one foot
one eighth inch = one foot



1
CG101
RETENTION POND 1
CROSS SECTION



2
CG101
RETENTION POND 2
CROSS SECTION



3
CG101
RETENTION POND 3
CROSS SECTION

RETENTION POND 1
STAGE STORAGE TABLE (2YR-24HR EL. 14.67)

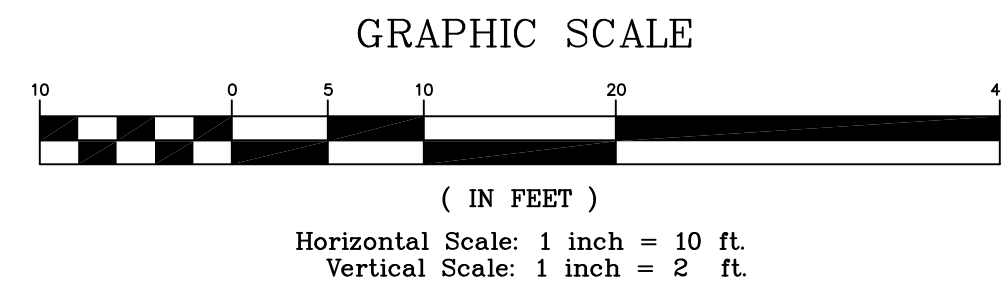
ELEVATION	AREA (FT ²)	CUMULATIVE VOLUME (FT ³)
16.00	12,742	29,600
15.00	10,770	17,844
14.00	8,895	8,011
13.00	7,127	0

RETENTION POND 2
STAGE STORAGE TABLE (2YR-24HR EL. 13.55)

ELEVATION	AREA (FT ²)	CUMULATIVE VOLUME (FT ³)
14.00	7,589	16,863
13.00	6,220	9,958
12.00	4,953	4,371
11.00	3,789	0

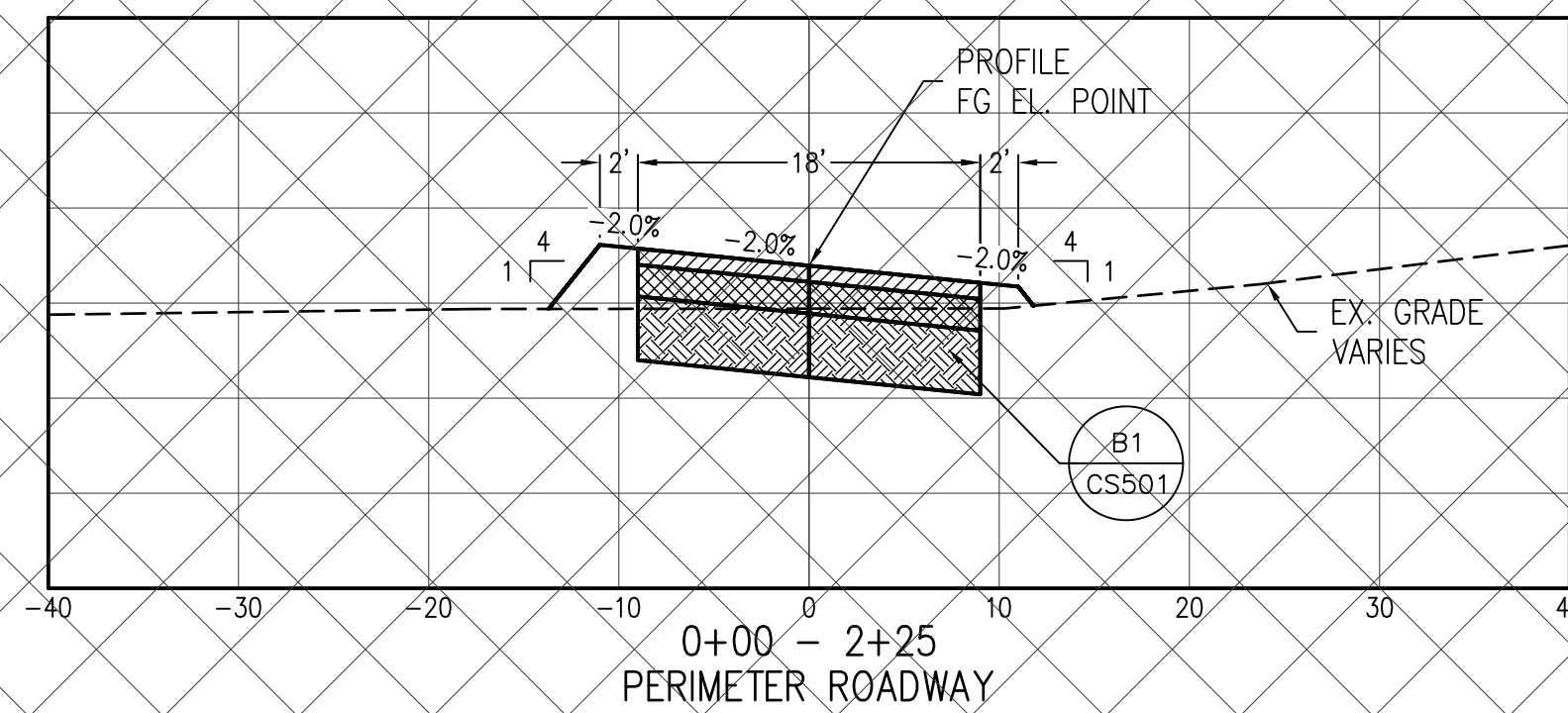
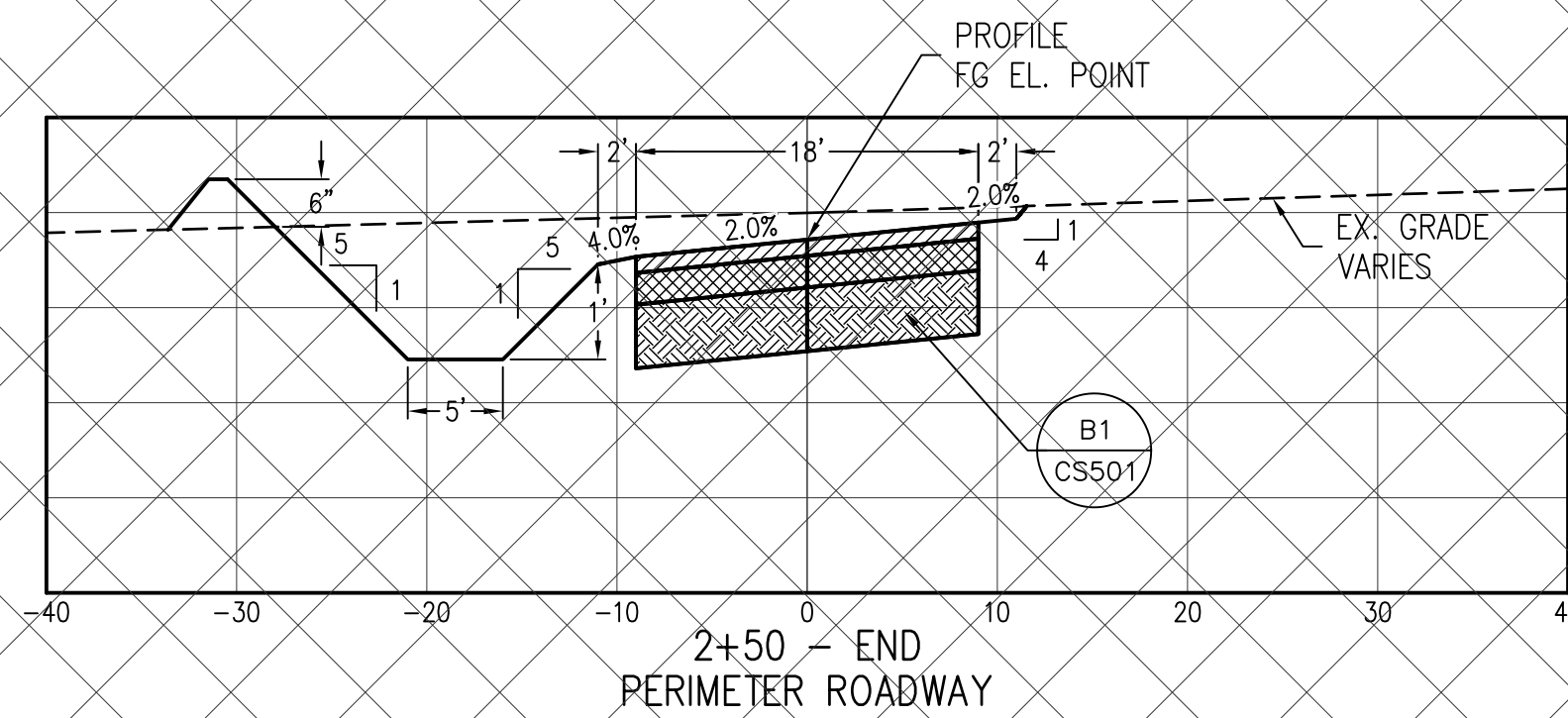
RETENTION POND 3
STAGE STORAGE TABLE (2YR-24HR EL. 13.55)

ELEVATION	AREA (FT ²)	CUMULATIVE VOLUME (FT ³)
14.00	10,628	24,263
13.00	8,878	14,510
12.00	7,230	6,456
11.00	5,681	0



LIMITS OF VA BUILD PERIMETER
ROAD CONTRACT (NIC)

- NOTES:
1. SEE SHEET CG101 FOR PERIMETER
ROADWAY GRADING PLAN.
2. SEE SHEET CG102 FOR PERIMETER
ROADWAY PROFILE.



CONSULTANTS:

CIVIL:
KENNETH HORNE & ASSOCIATES
7201 NORTH 9TH AVENUE, STE. 300
PENSACOLA, FLORIDA 32504
PH: (850) 471-9005
FX: (850) 471-0093

COMM/DES:
SCHMIDT CONSULTING GROUP, INC.
40 S. PALAFOX PLACE, STE. 300
PENSACOLA, FLORIDA 32502
PH: (850) 438-0050
FX: (850) 432-8631

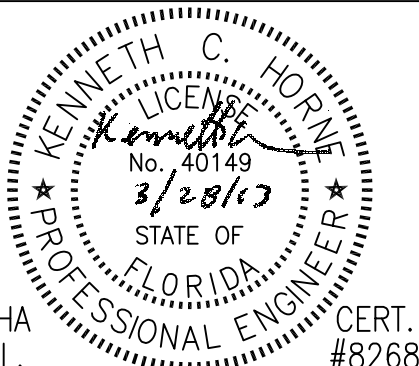
LANDSCAPE ARCHITECT:
CSA GROUP, INC.
6300 PICCADILLY SQUARE DRIVE
MOBILE, ALABAMA 36609
PH: (251) 344-4023
FX: (251) 344-4052

SURVEYORS:
KCI TECHNOLOGIES, INC.
10401 HIGHLAND MANOR DRIVE, SUITE 120
TAMPA, FLORIDA 33610
PH: (813) 740-2300

ARCHITECT/ENGINEERS:



BES DESIGN/BUILD, LLC
766 Middle St, Fairhope, AL 36532
Phone: 251.990.5778 Fax: 251.990.3716



Drawing Title
RETENTION PONDS AND
PERIMETER ROADWAY SECTIONS

Approved Project Director

Project Title
PANAMA CITY
OUTPATIENT CLINIC
VA GULF COAST HEALTH CARE

Location
PANAMA CITY, FLORIDA

Date
MARCH 2016

Checked
KCH

Drawn
LRR

Project Number
520-326

Building Number
-

Drawing Number
CG103

Dwg 18 of 21

Office of
Construction
and Facilities
Management

