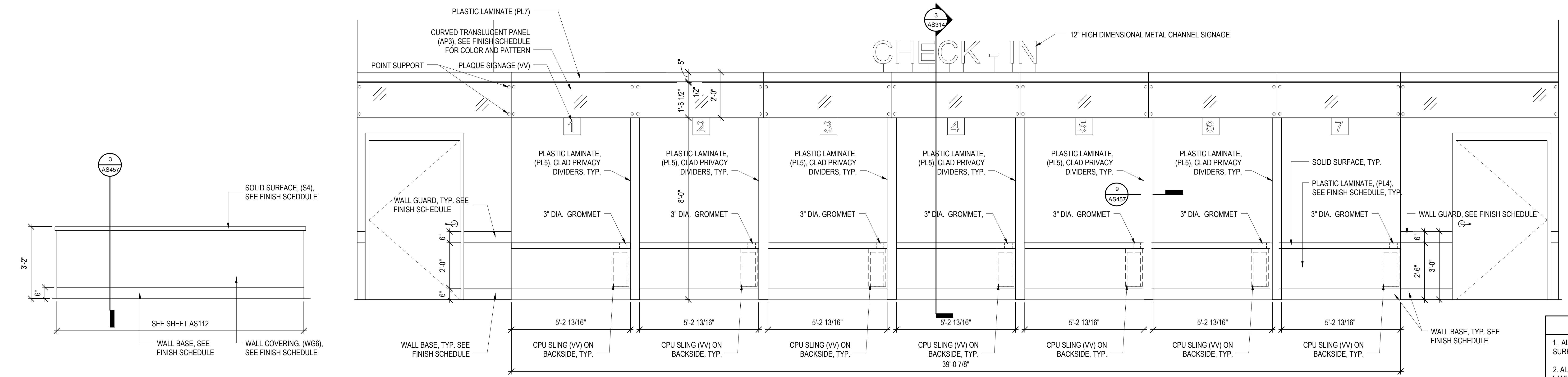


1 CASEWORK ELEV. 1 - VOL. INFO. DESK
AS450 1/2" = 1'-0"

2 CASEWORK ELEV. 2 - VOL. INFO DESK
AS450 1/2" = 1'-0"

3 CASEWORK ELEV. 3 - VOL. INFO DESK
AS450 1/2" = 1'-0"

4 CASEWORK ELEV. 4- VOL. INFO DESK
AS450 1/2" = 1'-0"

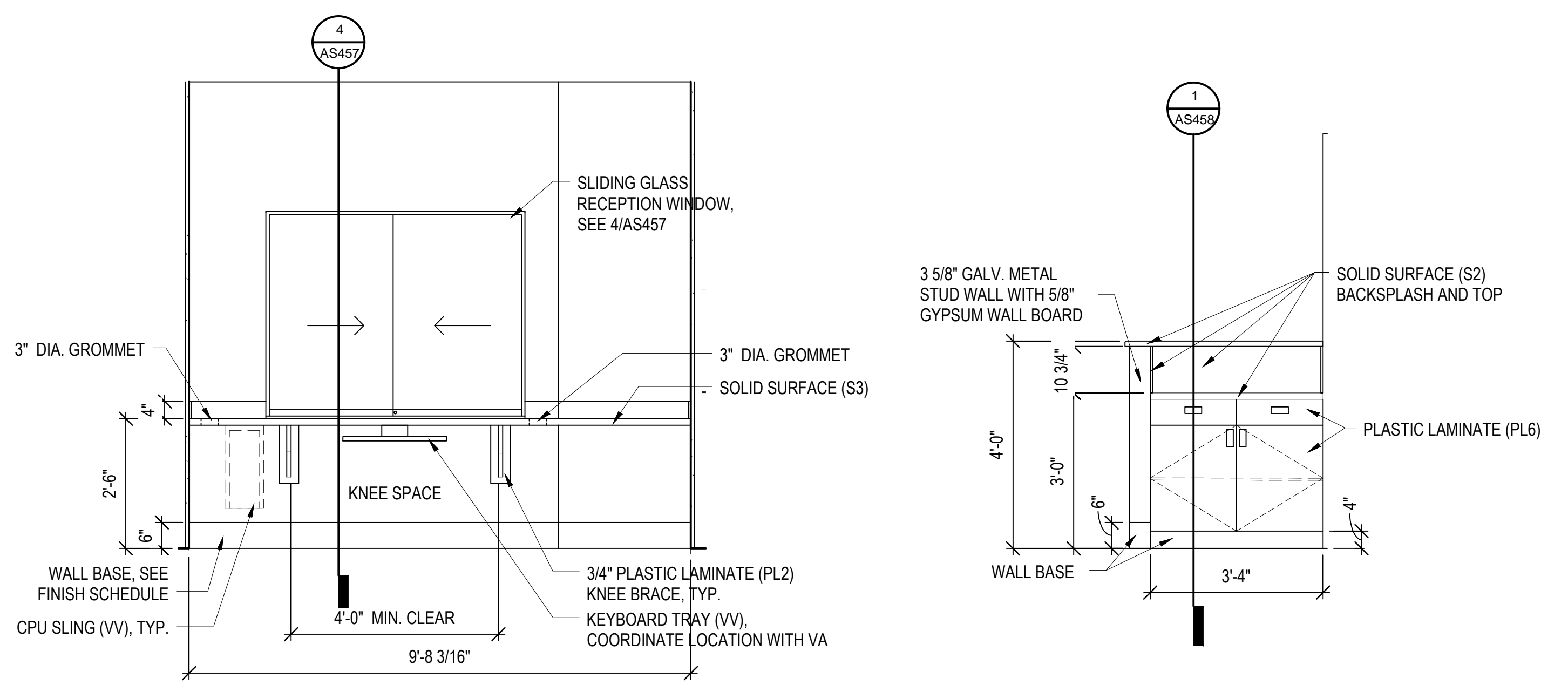


GRAPHIC LEGEND	
R	REFRIGERATOR (VV)
HC	HANDICAP ACCESSIBLE
VV	VA FURNISHED AND INSTALLED
CC	CONTRACTOR FURNISHED & INSTALLED
[Symbol]	EQUIPMENT: SEE EQUIPMENT SCHEDULE DENOTING EQUIPMENT TO BE PROVIDED AND INSTALLED BY THE CONSTRUCTION CONTRACT (CC) AND BY THE VA (VV)
[Symbol]	FF&E FURNITURE (VV)(DESIGNED AND PROVIDED BY VA)
[Symbol]	EQUIPMENT SYMBOL, SEE AS402 FOR EQUIPMENT SCHEDULE

- CASEWORK NOTES**
- ALL COUNTERTOPS AND BACKSPASHES ARE TO BE SOLID SURFACE. SEE FINISH SCHEDULE FOR COLOR.
 - ALL CABINET BODIES, DOORS AND DRAWERS TO BE PLASTIC LAMINATE PANELS. SEE FINISH SCHEDULE FOR COLOR.
 - ALL ADJUSTABLE SHELVES TO BE PLASTIC LAMINATE ON ADJUSTABLE SHELF STANDARDS.
 - REFER TO SPEC SECTION 12 32 00 AND 06 61 16 FOR SPECIFICATIONS FOR BUILT-IN CASEWORK SHOWN ON THIS DRAWING.
 - ALL CABINET PULLS TO BE 3" RECESSED PULLS, U.N.O.
 - PROVIDE BLOCKING IN WALLS FOR CORNER GUARDS, TV BRACKETS, TOILET ACCESSORIES, AND OTHER WALL MOUNTED ITEMS.

5 CASEWORK ELEV. - LOW WALL @ MAIN CHECK-IN
AS450 1/2" = 1'-0"
(2 REQUIRED)

6 CASEWORK ELEV. - MAIN CHECK-IN
AS450 1/2" = 1'-0"



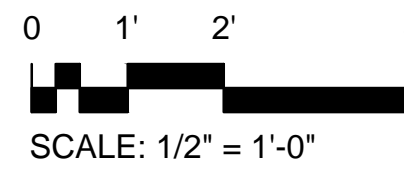
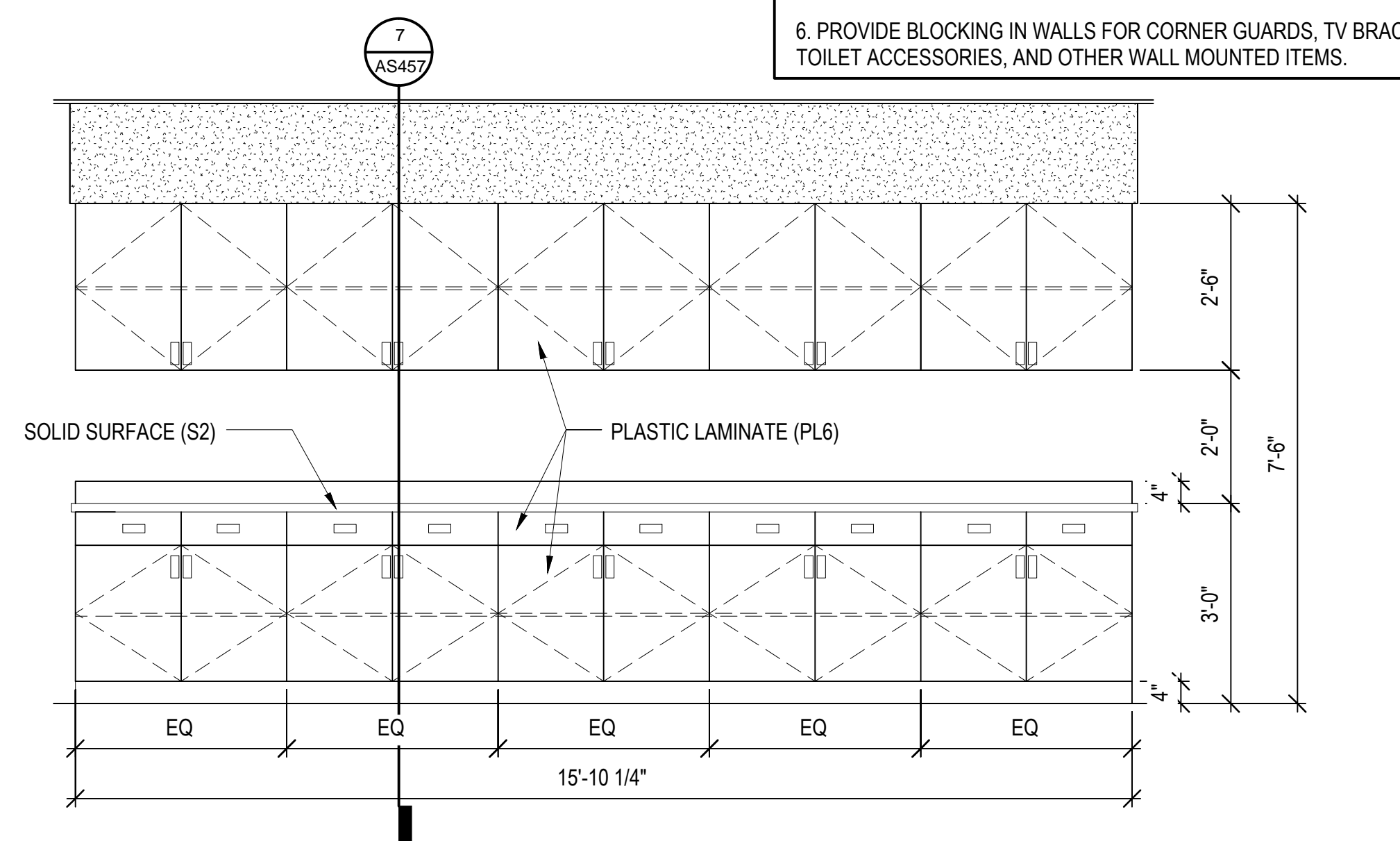
7 CASEWORK ELEV.- TECH/CHECK-IN (RM B17)
AS450 1/2" = 1'-0"

8 CASEWORK ELEV. - BLOOD COL. A
AS450 1/2" = 1'-0"

9 CASEWORK ELEV. - BLOOD COL. B
AS450 1/2" = 1'-0"

10 CASEWORK ELEV. - BLOOD COL. C
AS450 1/2" = 1'-0"

11 CASEWORK ELEV.- CENTRAL RECEPTION
AS450 1/2" = 1'-0"



CONSULTANTS:		ARCHITECT/ENGINEERS:		Drawing Title CASEWORK ELEVATIONS		Project Title CONSTRUCT VA OUTPATIENT CLINIC, PANAMA CITY		Project Number 520-326		Office of Construction and Facilities Management 			
CIVIL: KENNETH HORNE & ASSOCIATES 7201 NORTH 9TH AVENUE, STE. 6 PENSACOLA, FLORIDA 32504 PH: (850) 471-9005 FX: (850) 471-0093		COMM/DS: SCHMIDT CONSULTING GROUP, INC. 40 S. PALAFOX PLACE, STE. 300 PENSACOLA, FLORIDA 32302 PH: (850) 438-0050 FX: (850) 432-8631		BES DESIGN/BUILD, LLC 766 Middle St, Fairhope, AL 36532 Phone: 251.990.5778 Fax: 251.990.3716		Approved Project Director		Building Number -					
LANDSCAPE ARCHITECT: CSA GROUP, INC. 6300 PICCADILLY SQUARE DRIVE MOBILE, ALABAMA 36609 PH: (251) 344-4023 FX: (251) 344-4052		SURVEYORS: KCI TECHNOLOGIES, INC. 10401 HIGHLAND MANOR DRIVE, SUITE 120 TAMPA, FLORIDA 33610 PH: (813) 740-2300		State of Florida Professional Engineer Seal for Allen C. Smith, No. 11119, dated 11/19/19.		Location PANAMA CITY, FLORIDA		Drawing Number AS450					
Revisions:		Date		Date		Date APRIL 2013		Checked		Drawn			
										Dwg. 30 of 43			