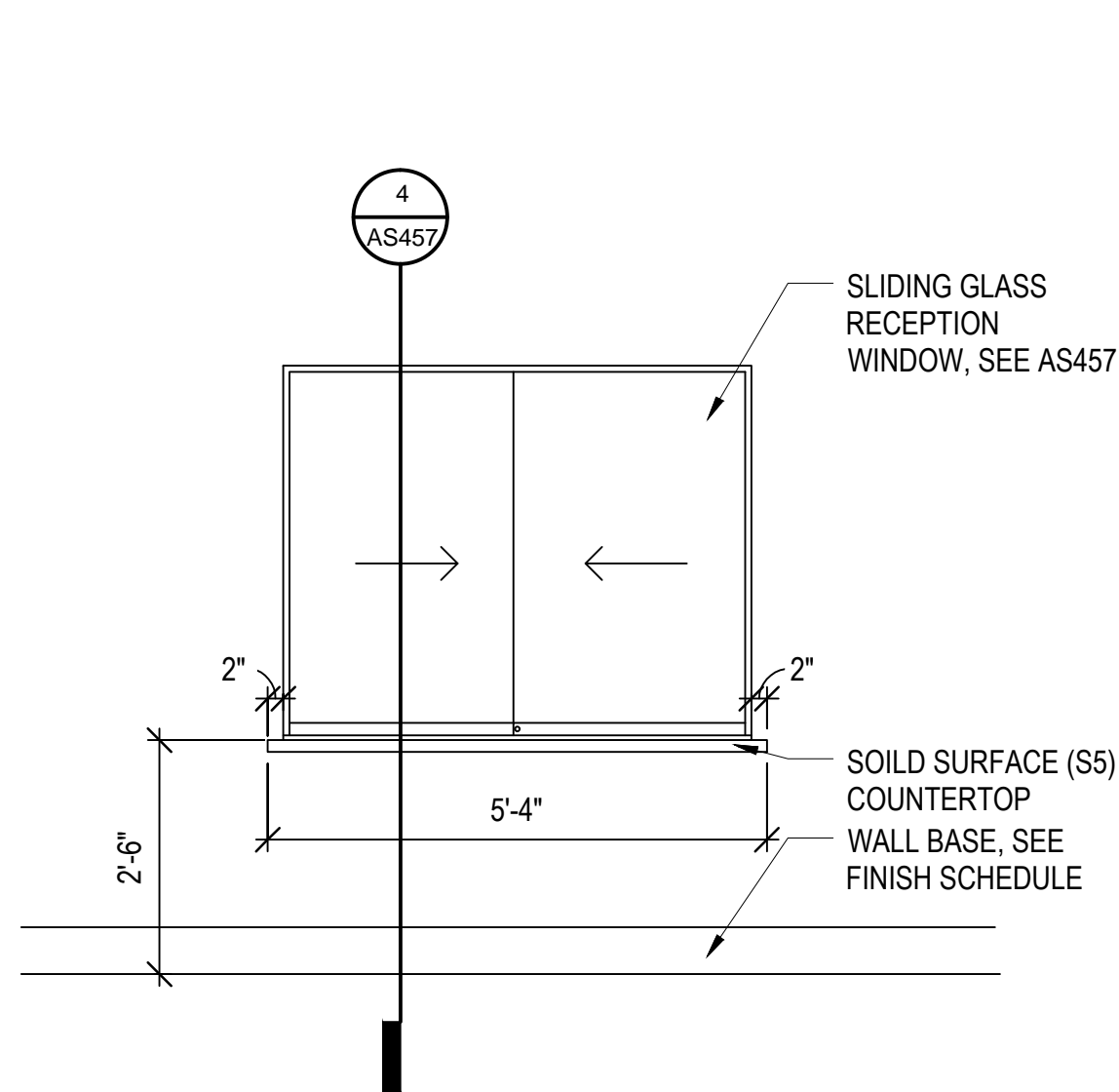
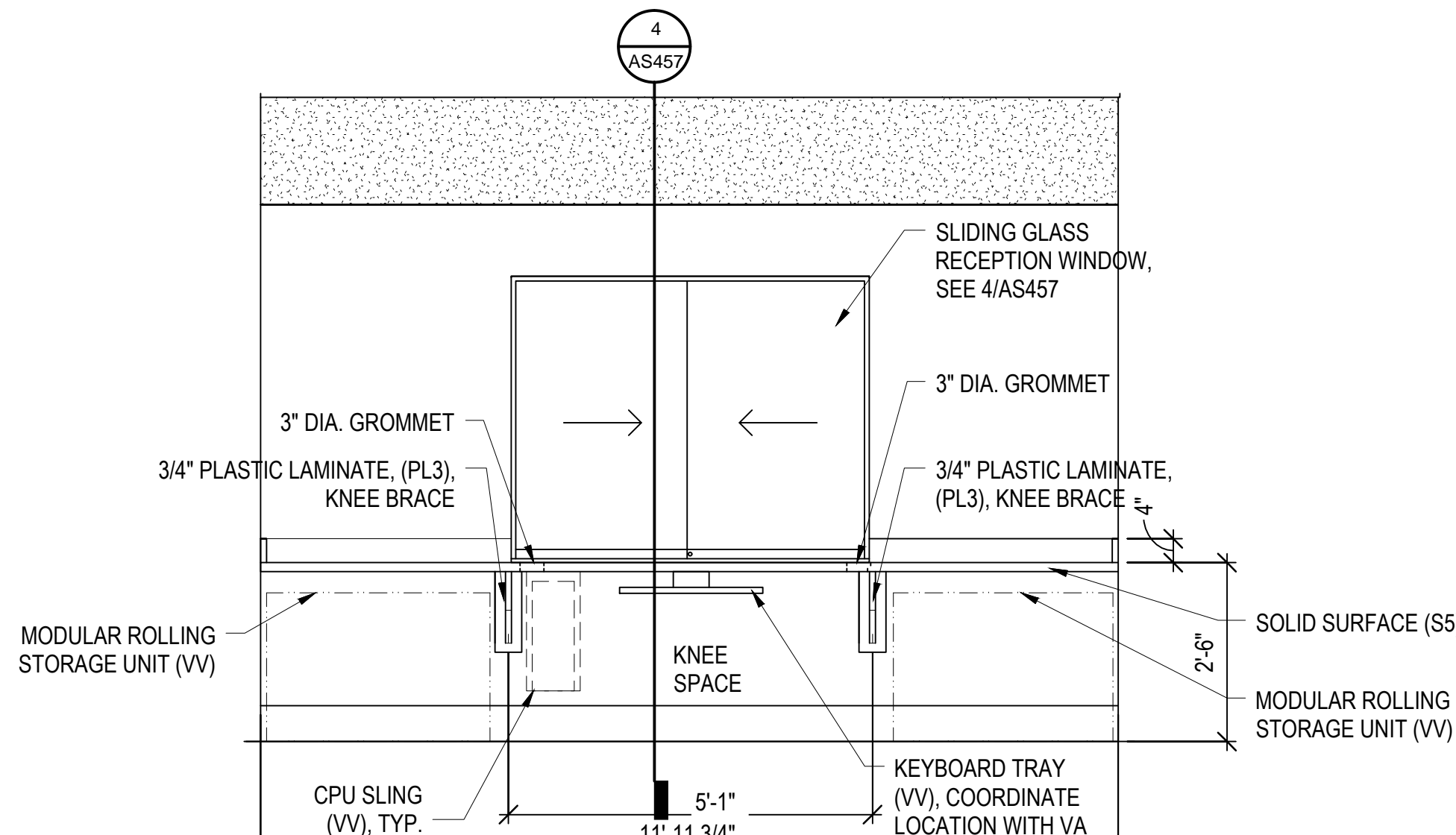


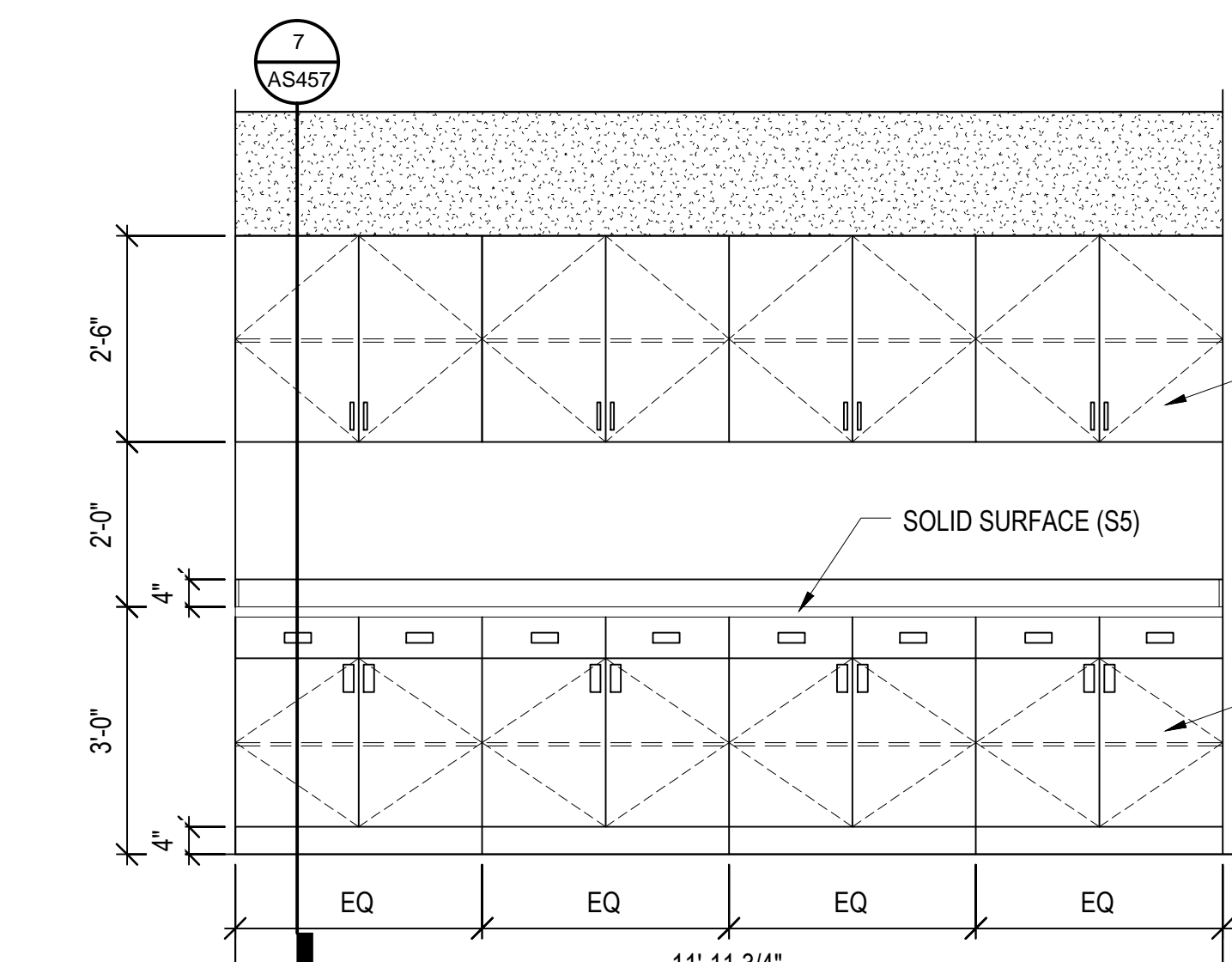
5/16/2013 9:35:55 AM  
DL:\AC2010\Projects\13271-01\_BES\_JORC\_walls.rvt  
one eighth inch = one foot  
one quarter inch = one foot  
three eighths inch = one foot  
one half inch = one foot  
three quarters inch = one foot  
one inch = one foot  
one and one half inches = one foot  
two inches = one foot  
three inches = one foot



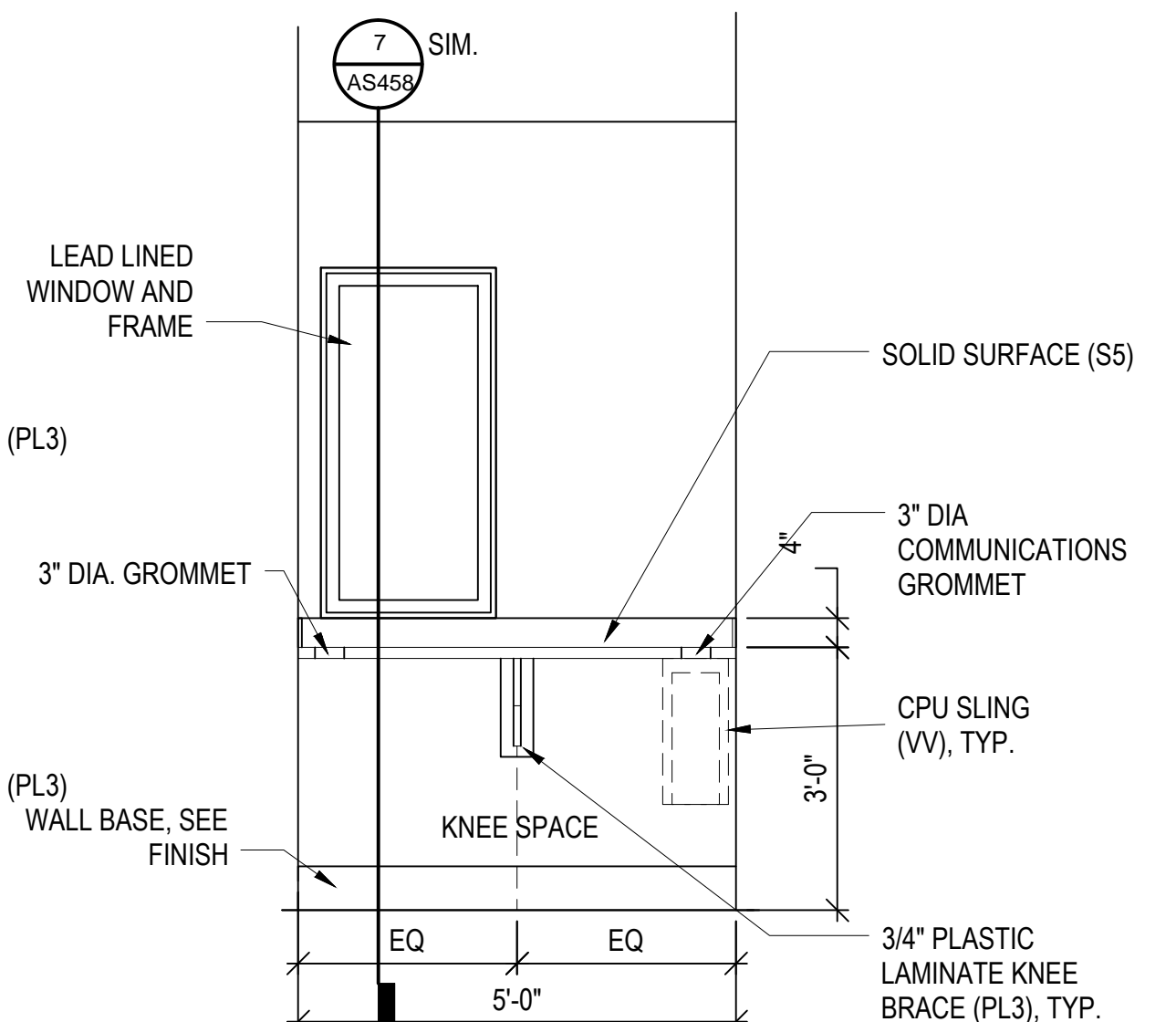
1 CASEWORK ELEV. - DENTAL RECEPTION A  
(RADIOLOGY AND LAB SIM.)  
AS451 1/2" = 1'-0"



2 CASEWORK ELEV. - DENTAL RECEPTION B  
AS451 1/2" = 1'-0"



3 CASEWORK ELEV. - DENTAL RECEPTION C  
AS451 1/2" = 1'-0"

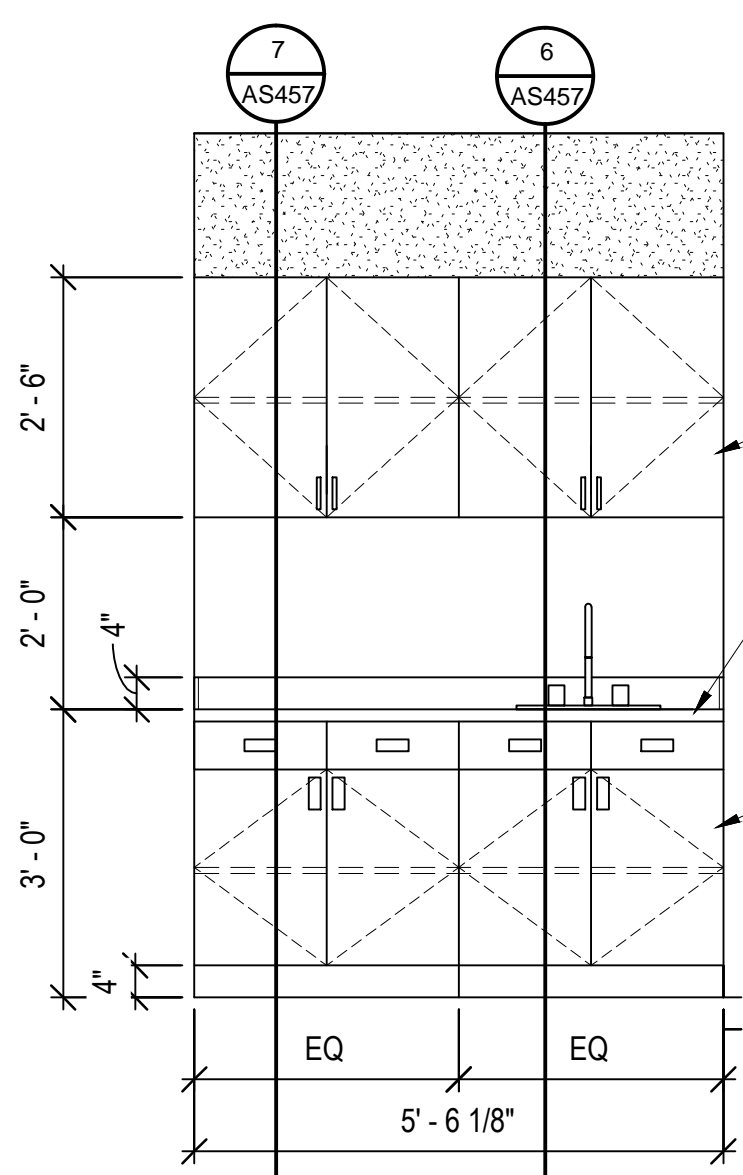


4 CASEWORK ELEV. - DENTAL X-RAY  
AS451 1/2" = 1'-0"

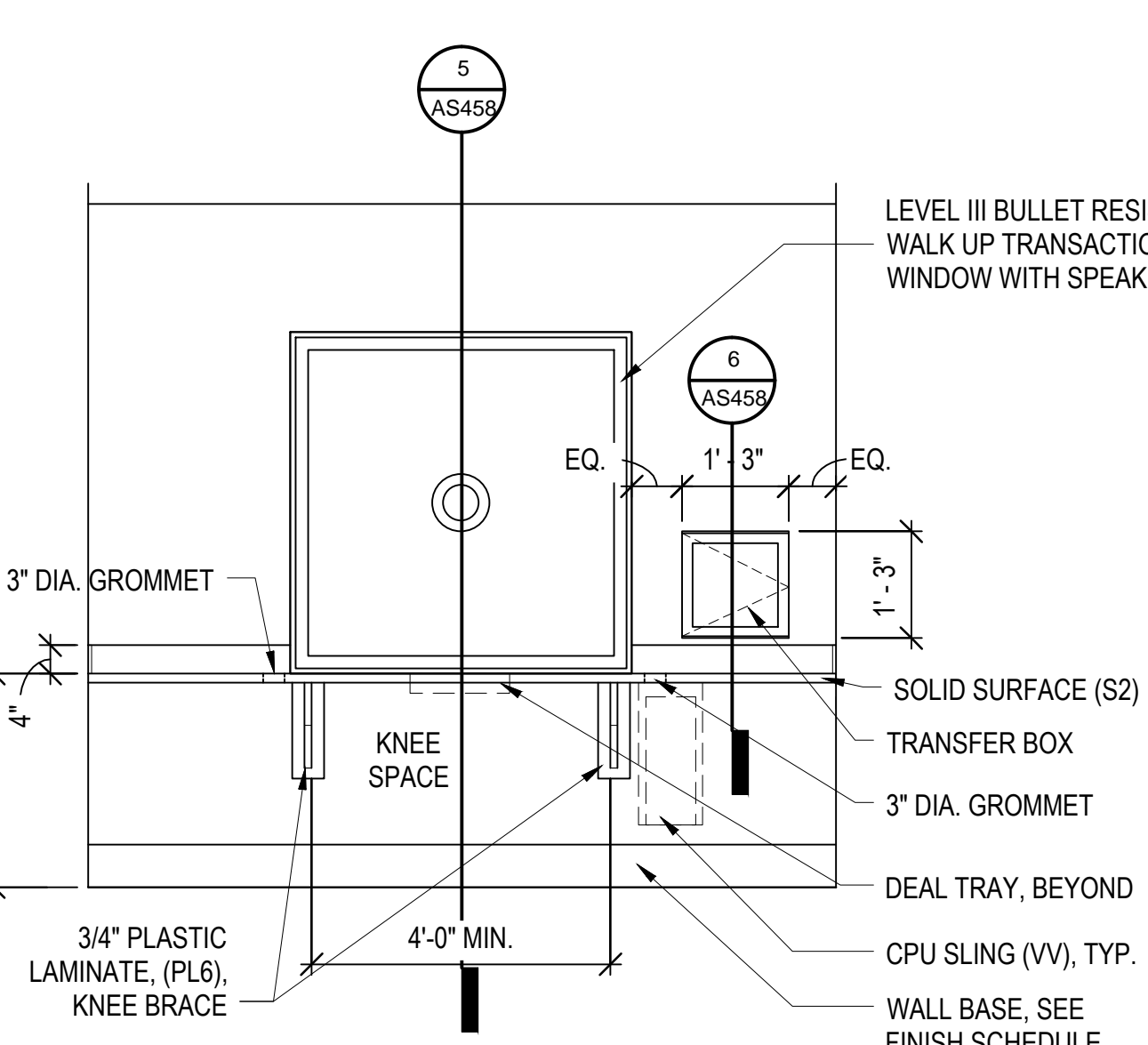
- ### CASEWORK NOTES
1. ALL COUNTERTOPS AND BACKSPASHES ARE TO BE SOLID SURFACE. SEE FINISH SCHEDULE FOR COLOR.
  2. ALL CABINET BODIES, DOORS AND DRAWERS TO BE PLASTIC LAMINATE PANELS. SEE FINISH SCHEDULE FOR COLOR.
  3. ALL ADJUSTABLE SHELVES TO BE PLASTIC LAMINATE ON ADJUSTABLE SHELF STANDARDS.
  4. REFER TO SPEC SECTION 12 32 00 AND 06 61 16 FOR SPECIFICATIONS FOR BUILT-IN CASEWORK SHOWN ON THIS DRAWING.
  5. ALL CABINET PULLS TO BE 3" RECESSED PULLS, U.N.O.
  6. PROVIDE BLOCKING IN WALLS FOR CORNER GUARDS, TV BRACKETS, TOILET ACCESSORIES, AND OTHER WALL MOUNTED ITEMS.

### GRAPHIC LEGEND

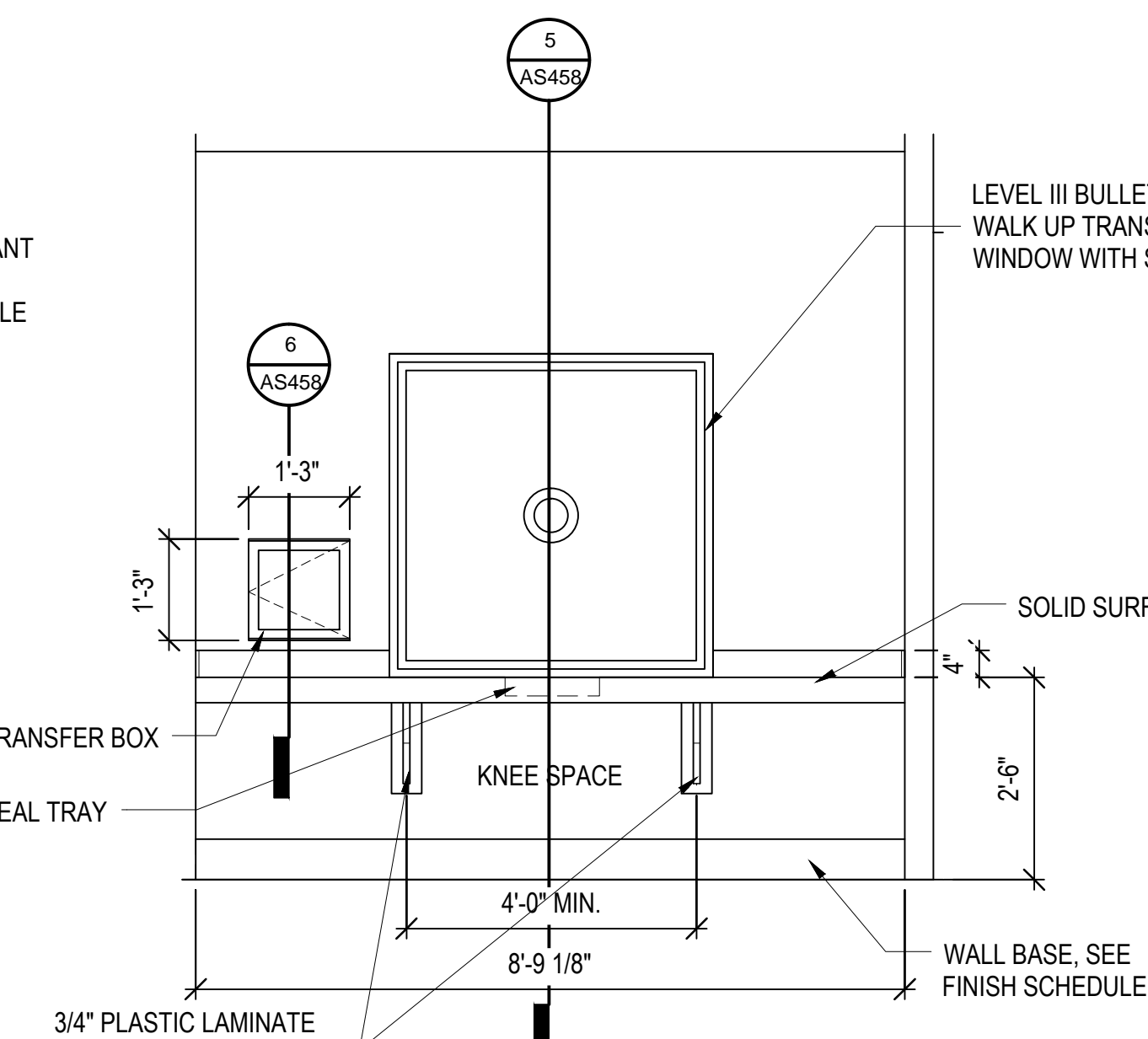
R	REFRIGERATOR (VV)
HC	HANDICAP ACCESSIBLE
VV	VA FURNISHED AND INSTALLED
CC	CONTRACTOR FURNISHED & INSTALLED
[Symbol]	EQUIPMENT: SEE EQUIPMENT SCHEDULE DENOTING EQUIPMENT TO BE PROVIDED AND INSTALLED BY THE CONSTRUCTION CONTRACT (CC) AND BY THE VA (VV)
[Symbol]	FF&E FURNITURE (VV)(DESIGNED AND PROVIDED BY VA)
[Symbol]	EQUIPMENT SYMBOL, SEE AS402 FOR EQUIPMENT SCHEDULE



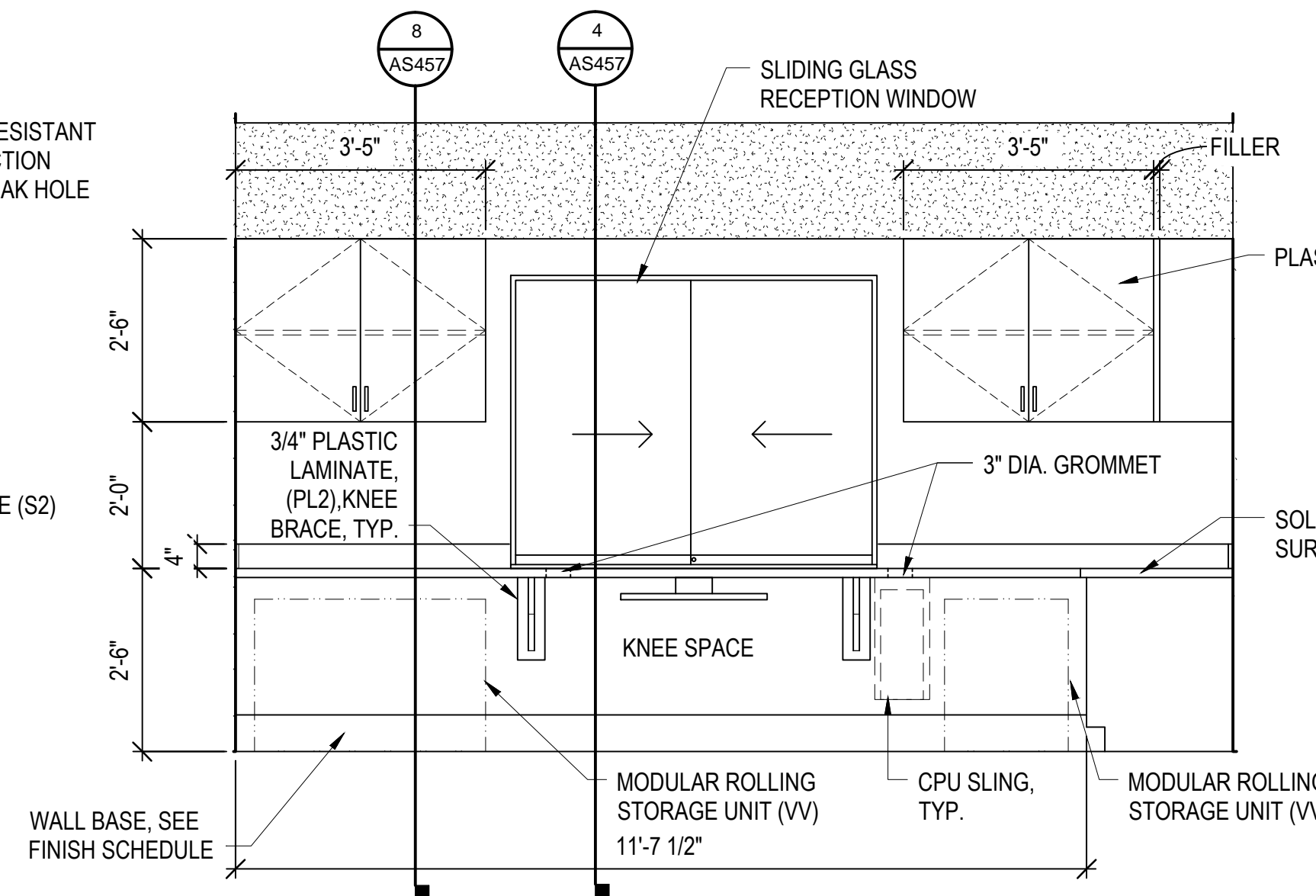
5 CASEWORK ELEV. - PROS. PREP  
AS451 1/2" = 1'-0"



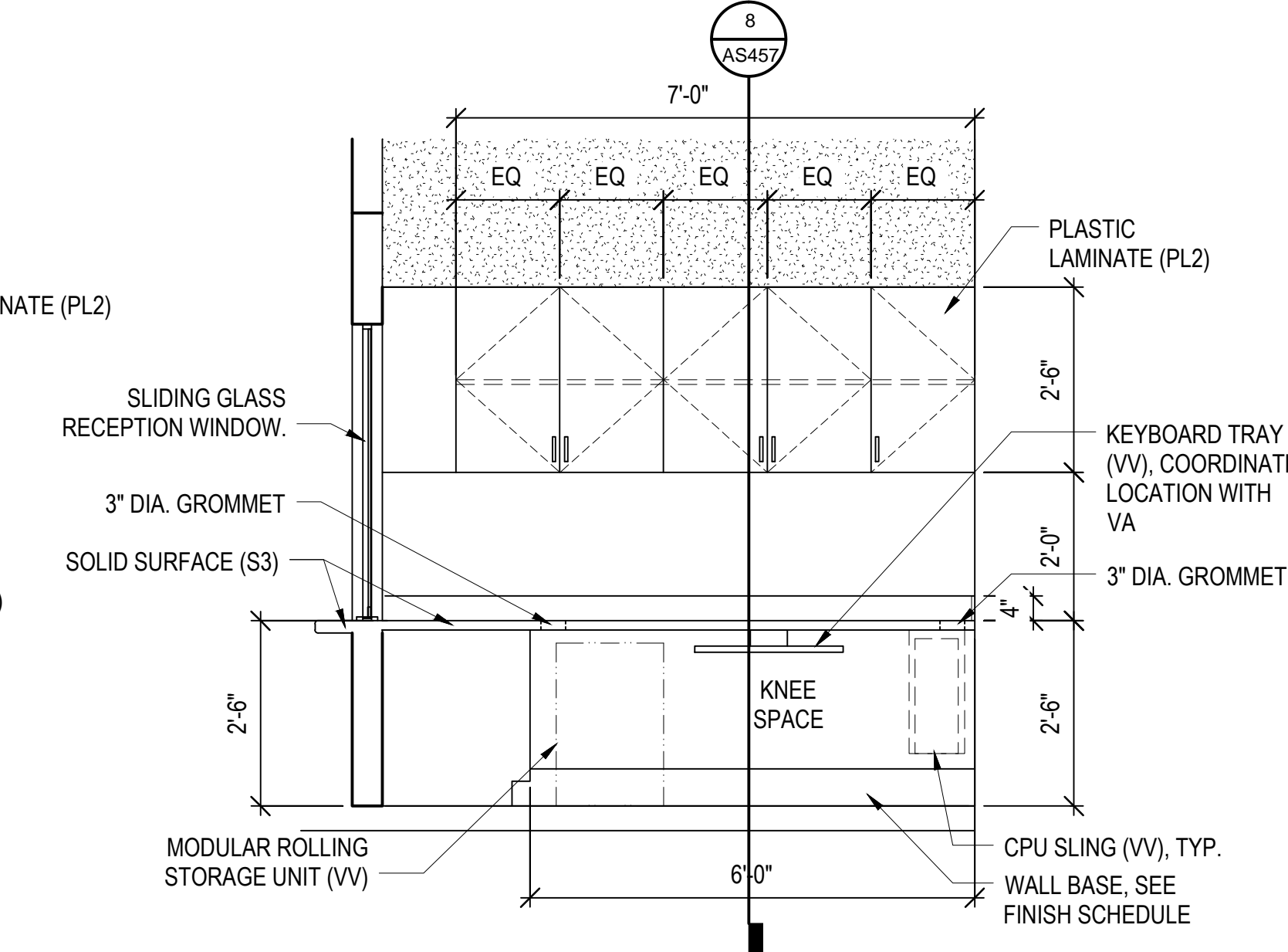
6 CASEWORK ELEV. - PHARMACY A  
(PHARMACY - EXTERIOR SIDE/PATIENT SIDE)  
AS451 1/2" = 1'-0"



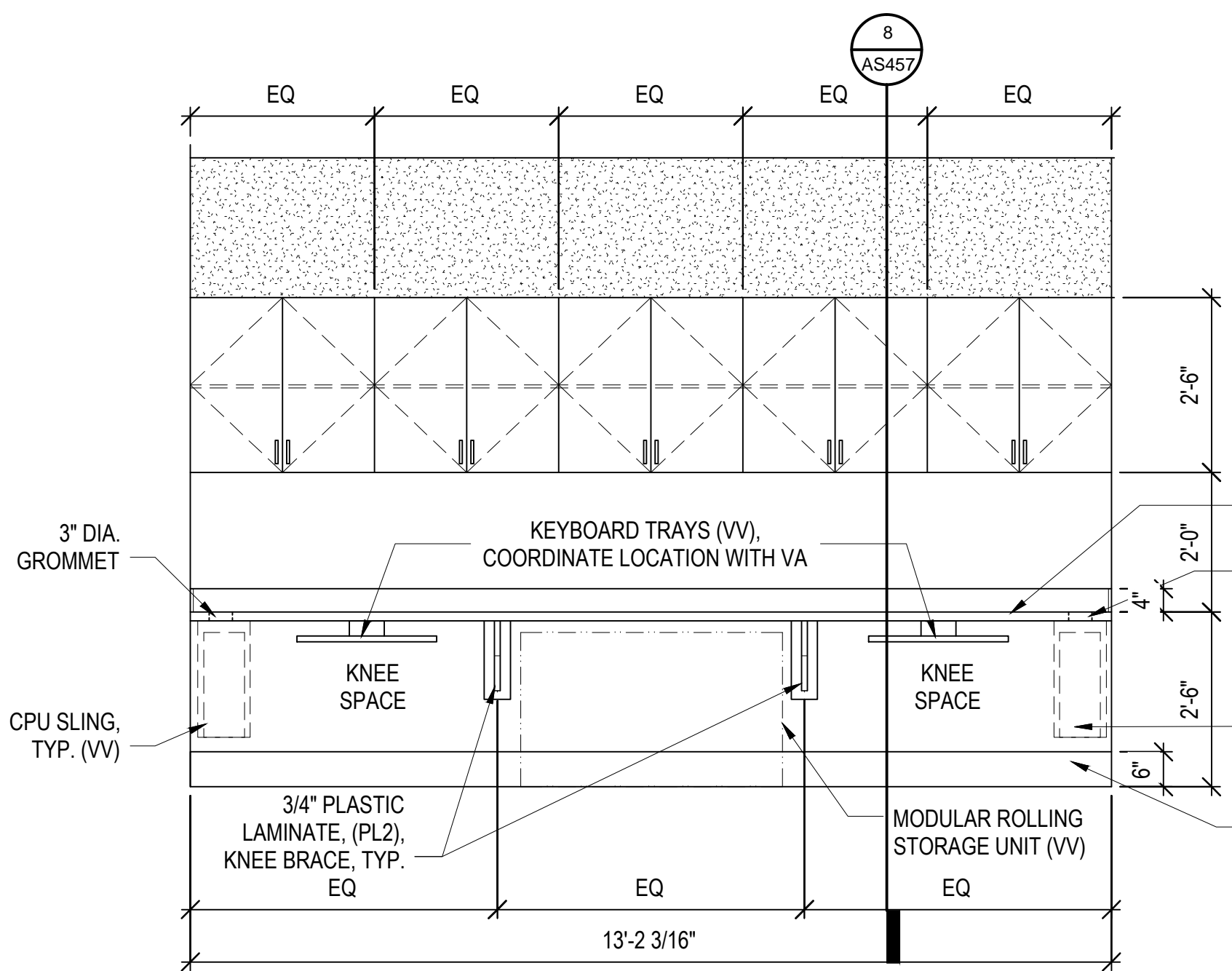
7 CASEWORK ELEV. - PHARMACY B  
(PHARMACY - INTERIOR SIDE)  
AS451 1/2" = 1'-0"



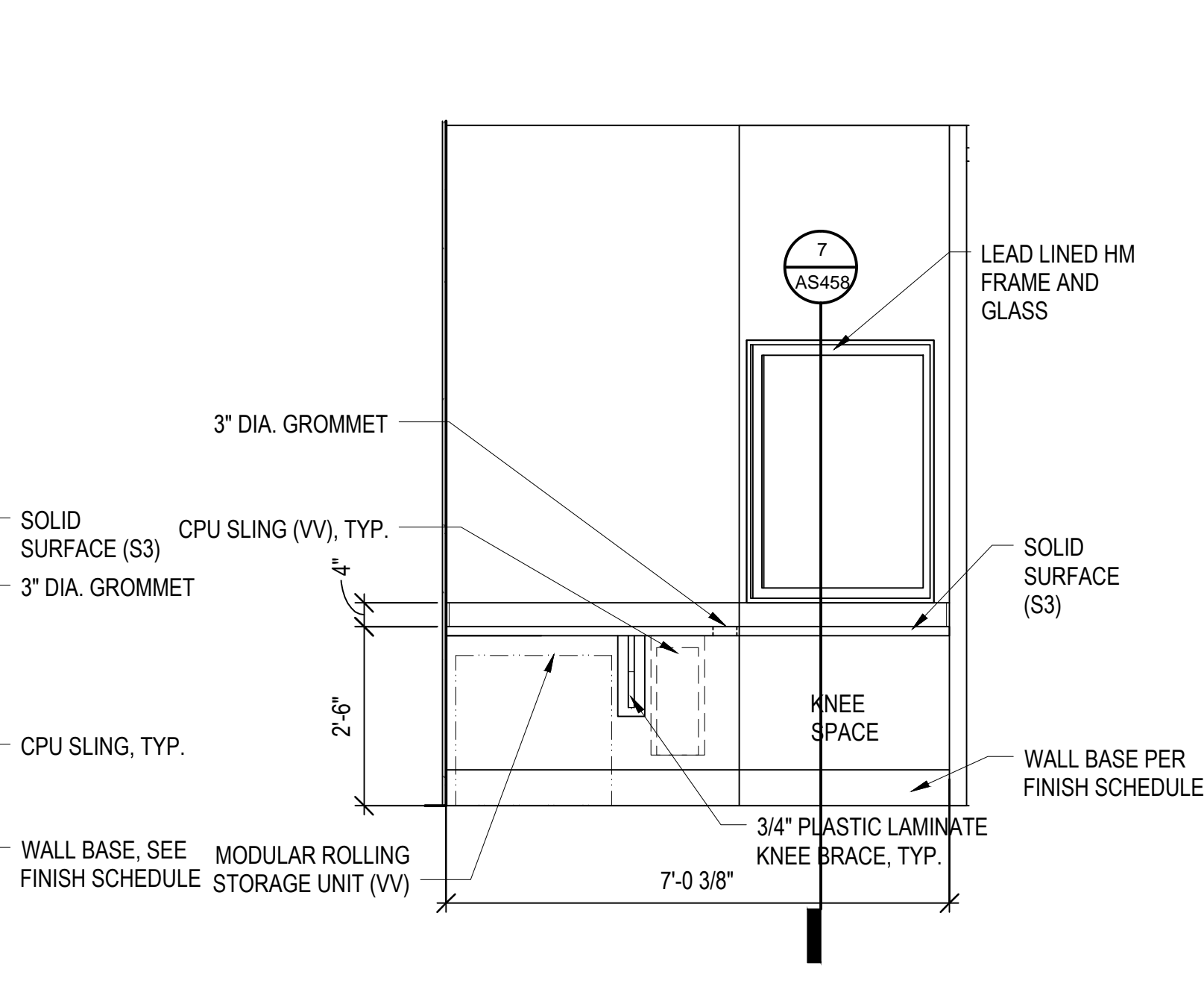
8 CASEWORK ELEV. - RADIOLOGY RECEPTION A  
AS451 1/2" = 1'-0"



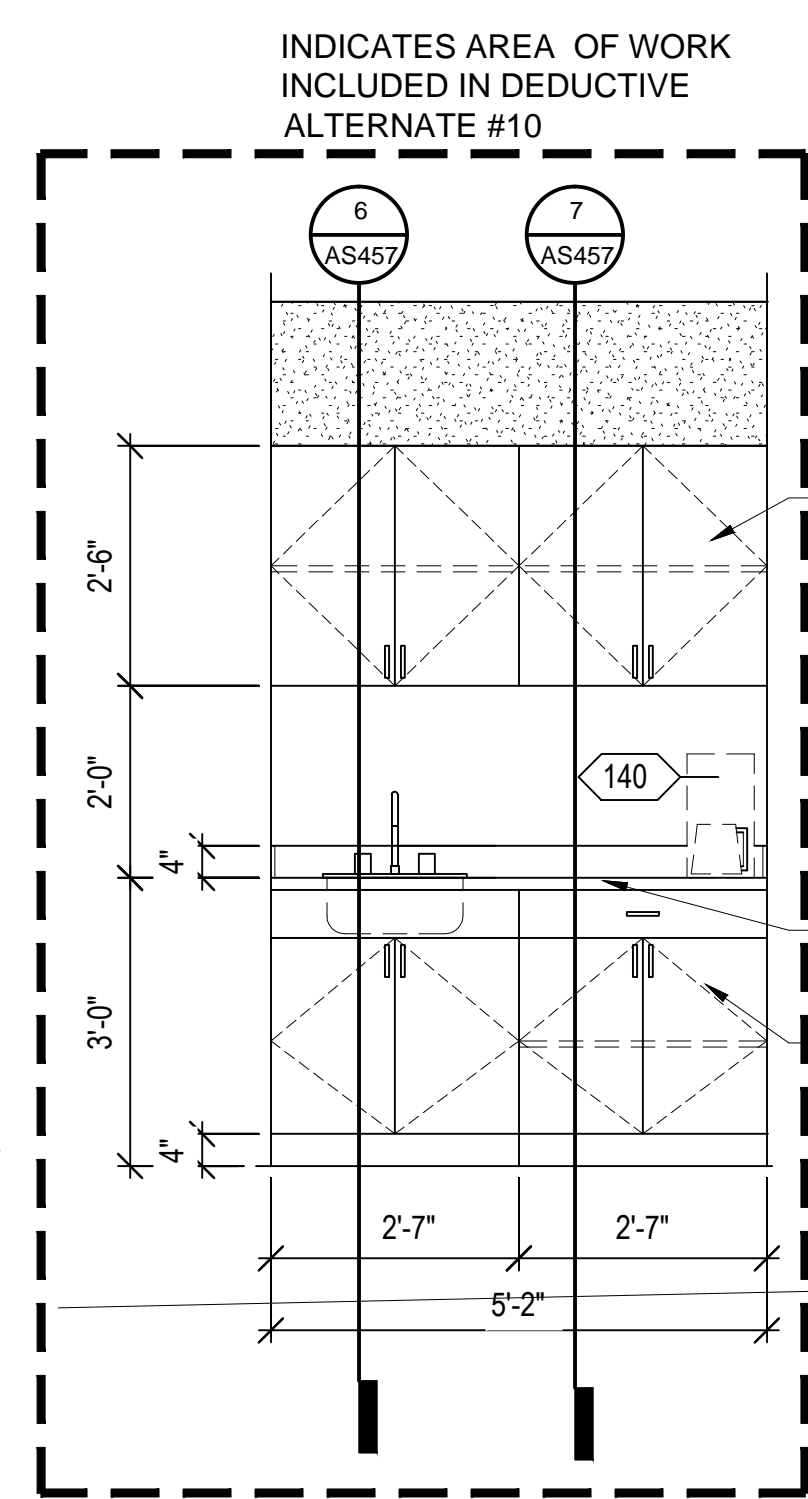
9 CASEWORK ELEV. - RADIOLOGY RECEPTION B  
AS451 1/2" = 1'-0"



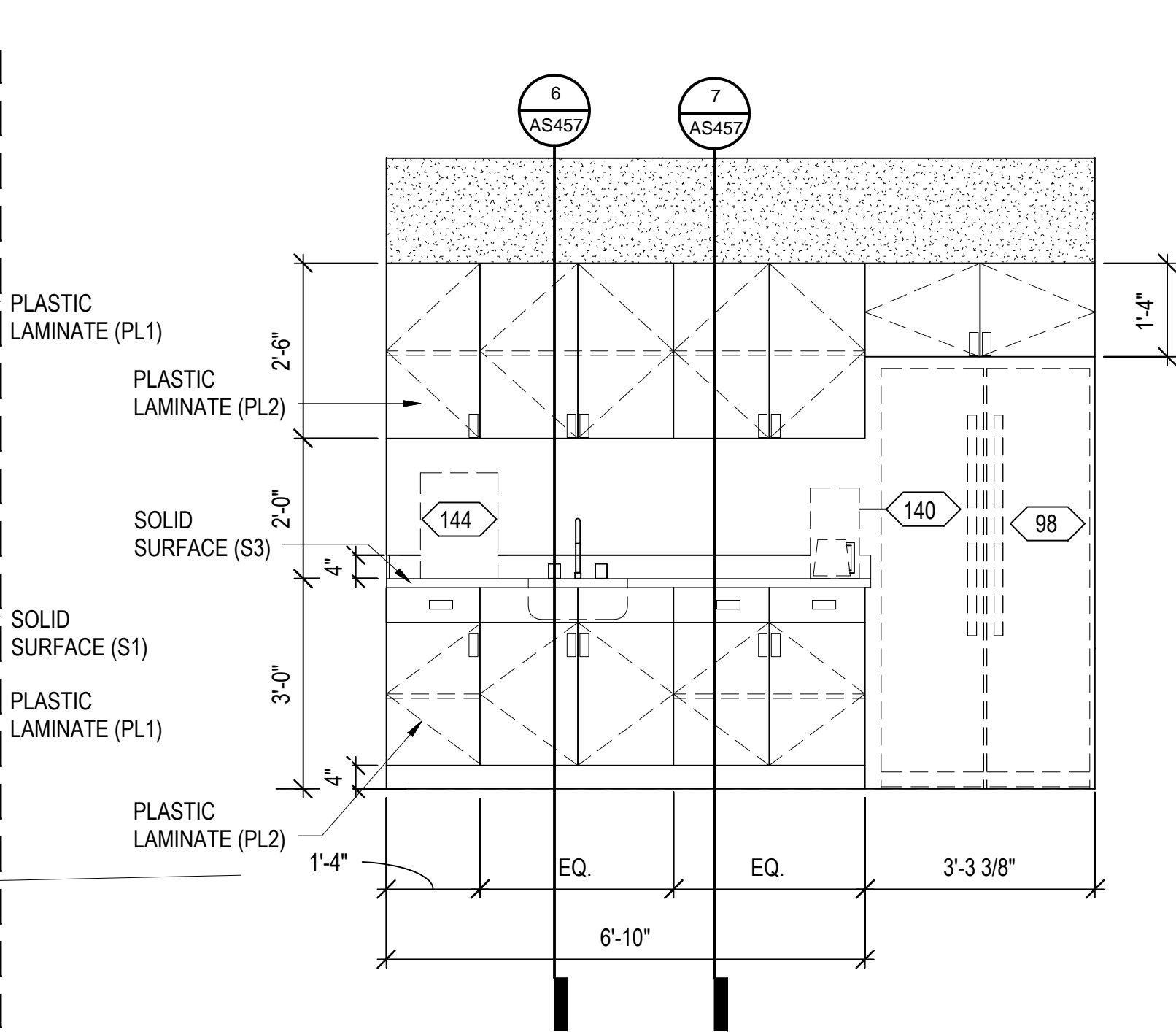
10 CASEWORK ELEV. - RADIOLOGY TECH RM.  
AS451 1/2" = 1'-0"



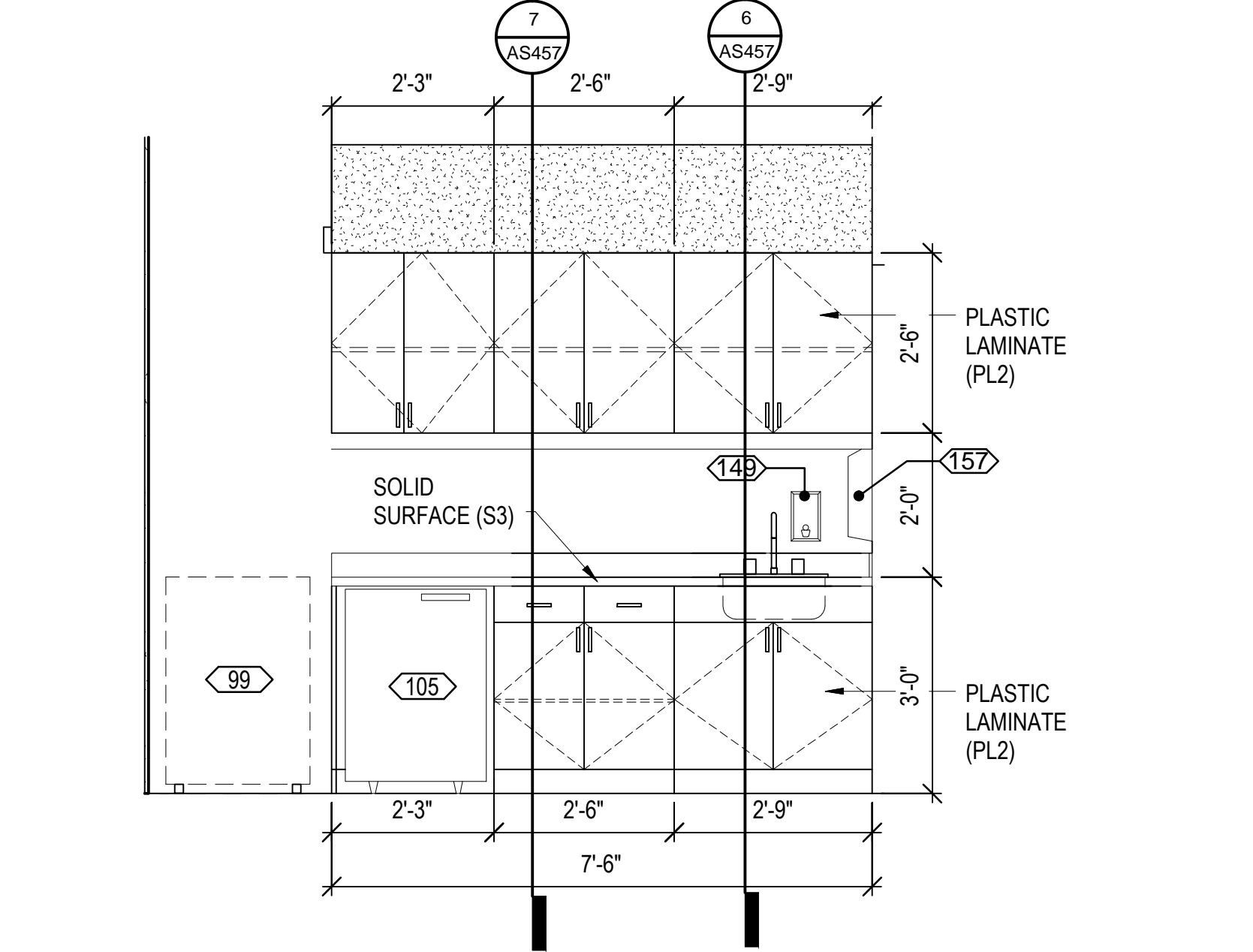
11 CASEWORK ELEV. - RADIOLOGY  
AS451 1/2" = 1'-0"



12 CASEWORK ELEV. - ADMIN.  
AS451 1/2" = 1'-0"



13 CASEWORK ELEVATION - VOL. MP ROOM  
AS451 1/2" = 1'-0"



14 CASEWORK ELEV. - MEDICINE ROOM C31B  
AS451 1/2" = 1'-0"

<b>CONSULTANTS:</b>		<b>ARCHITECT/ENGINEERS:</b>		<b>Drawing Title</b> CASEWORK ELEVATIONS		<b>Project Title</b> CONSTRUCT VA OUTPATIENT CLINIC, PANAMA CITY		<b>Project Number</b> 520-326		<b>Office of Construction and Facilities Management</b> Department of Veterans Affairs			
CIVIL: KENNETH HORNE & ASSOCIATES 7201 NORTH 9TH AVENUE, STE. 6 PENSACOLA, FLORIDA 32504 PH: (850) 471-9005 FX: (850) 471-0093		COMM/BS: SCHMIDT CONSULTING GROUP, INC. 40 S. PALAFOX PLACE, STE. 300 PENSACOLA, FLORIDA 32502 PH: (850) 438-0050 FX: (850) 432-8631		BES DESIGN/BUILD, LLC 766 Middle St, Fairhope, AL 36532 Phone: 251.990.5778 Fax: 251.990.3716		Approved Project Director		Building Number -					
LANDSCAPE ARCHITECT: CSA GROUP, INC. 6300 PICCADILLY SQUARE DRIVE MOBILE, ALABAMA 36609 PH: (251) 344-4023 FX: (251) 344-4052		SURVEYORS: KCI TECHNOLOGIES, INC. 10401 HIGHLAND MANOR DRIVE, SUITE 120 TAMPA, FLORIDA 33610 PH: (813) 740-2300				Location PANAMA CITY, FLORIDA		Drawing Number AS451					
<b>Revisions:</b>						Date APRIL 2013		Checked		Drawn		Dwg. 31 of 43	