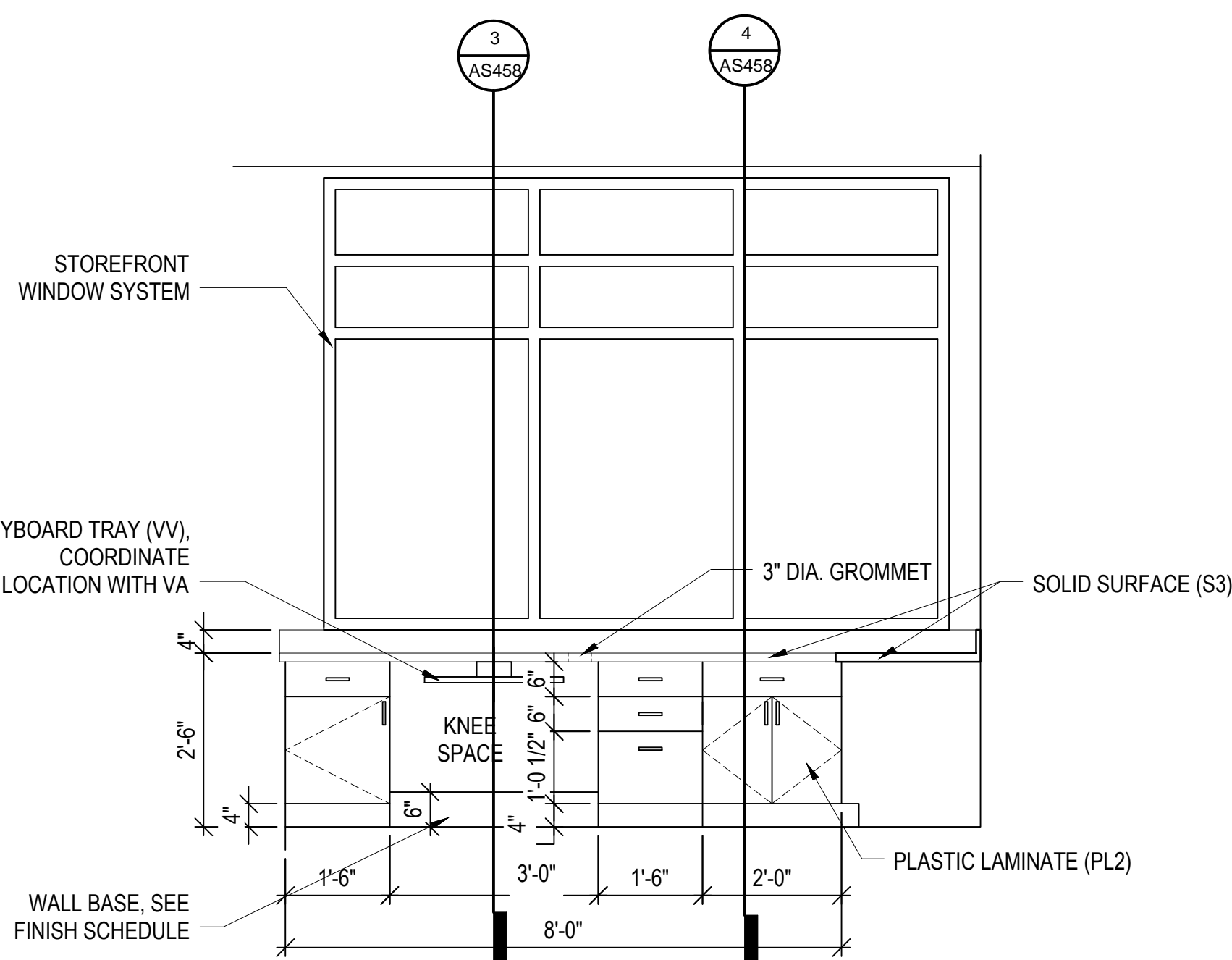


# CASEWORK NOTES

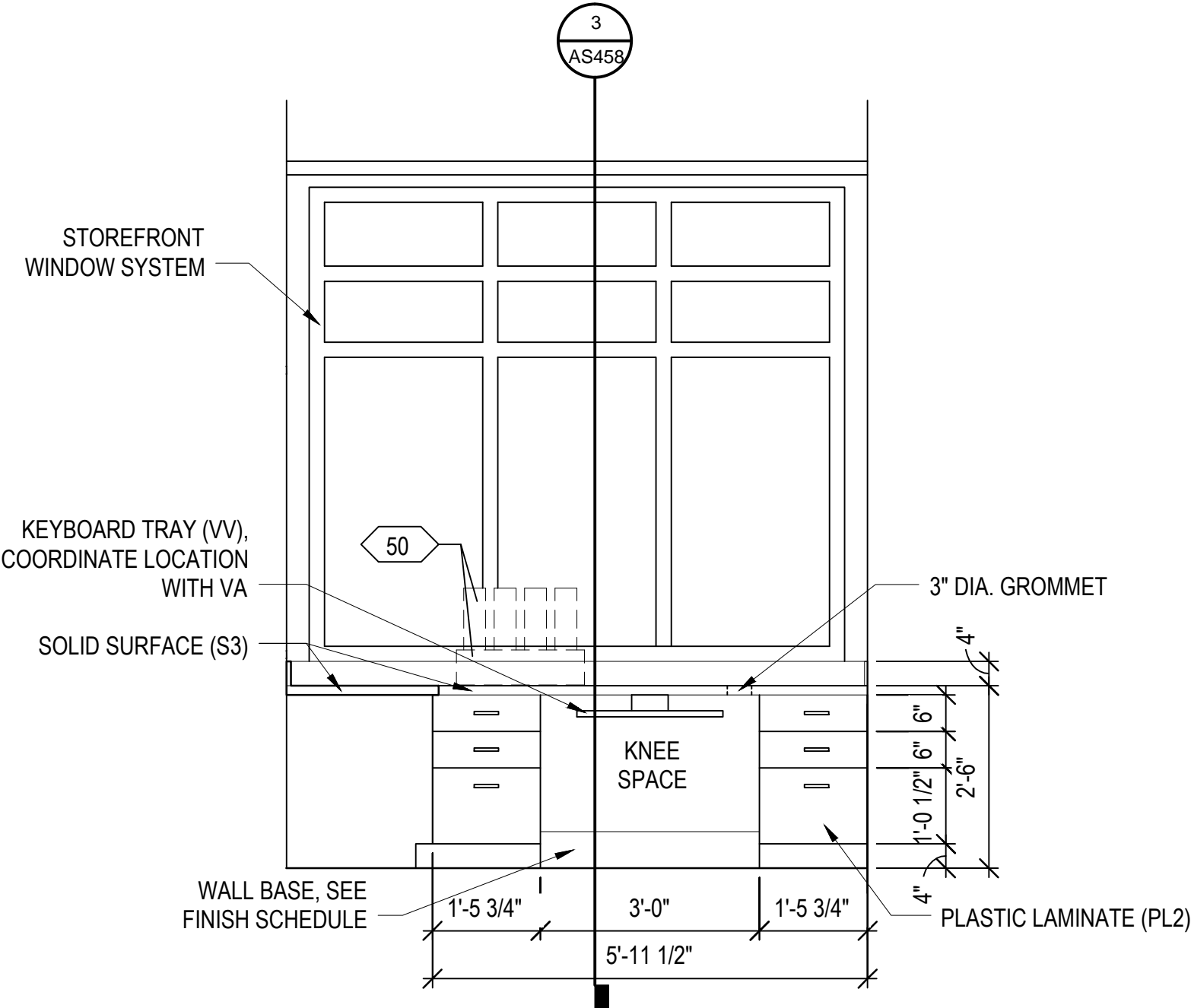
1. ALL COUNTERTOPS AND BACKSPASHES ARE TO BE SOLID SURFACE. SEE FINISH SCHEDULE FOR COLOR.
2. ALL CABINET BODIES, DOORS AND DRAWERS TO BE PLASTIC LAMINATE PANELS. SEE FINISH SCHEDULE FOR COLOR.
3. ALL ADJUSTABLE SHELVES TO BE PLASTIC LAMINATE ON ADJUSTABLE SHELF STANDARDS.
4. REFER TO SPEC SECTION 12 32 00 AND 06 61 16 FOR SPECIFICATIONS FOR BUILT-IN CASEWORK SHOWN ON THIS DRAWING.
5. ALL CABINET PULLS TO BE 3" RECESSED PULLS, U.N.O.
6. PROVIDE BLOCKING IN WALLS FOR CORNER GUARDS, TV BRACKETS, TOILET ACCESSORIES, AND OTHER WALL MOUNTED ITEMS.

# GRAPHIC LEGEND

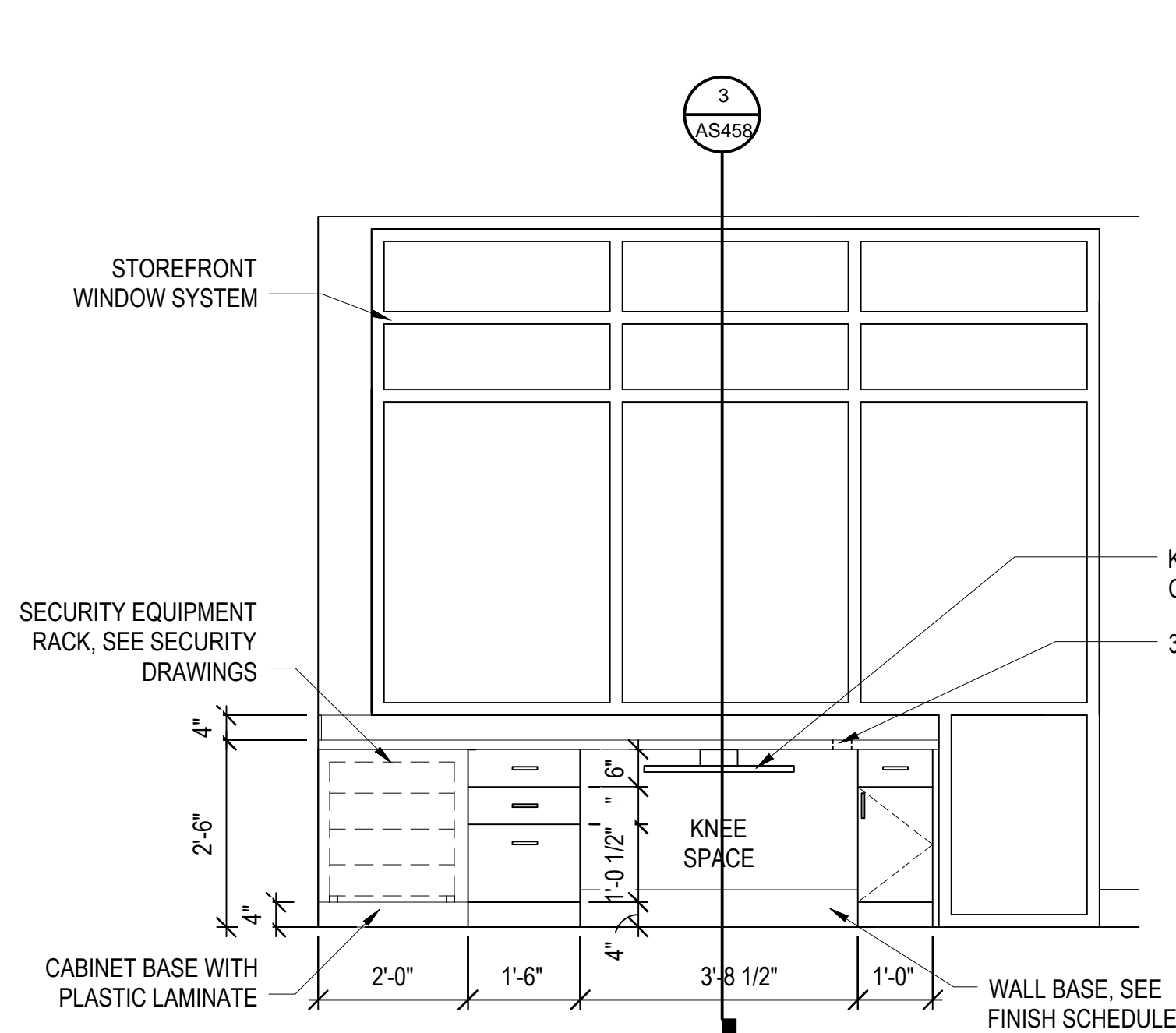
- |          |  |
|----------|--|
| R        | REFRIGERATOR (VV)  |
| HC       | HANDICAP ACCESSIBLE  |
| VV       | VA FURNISHED AND INSTALLED   |
| CC       | CONTRACTOR FURNISHED & INSTALLED   |
| [Symbol] | EQUIPMENT: SEE EQUIPMENT SCHEDULE DENOTING EQUIPMENT TO BE PROVIDED AND INSTALLED BY THE CONSTRUCTION CONTRACT (CC) AND BY THE VA (VV) |
| [Symbol] | FF&E FURNITURE (VV)(DESIGNED AND PROVIDED BY VA)   |
| [Symbol] | EQUIPMENT SYMBOL. SEE AS402 FOR EQUIPMENT SCHEDULE   |



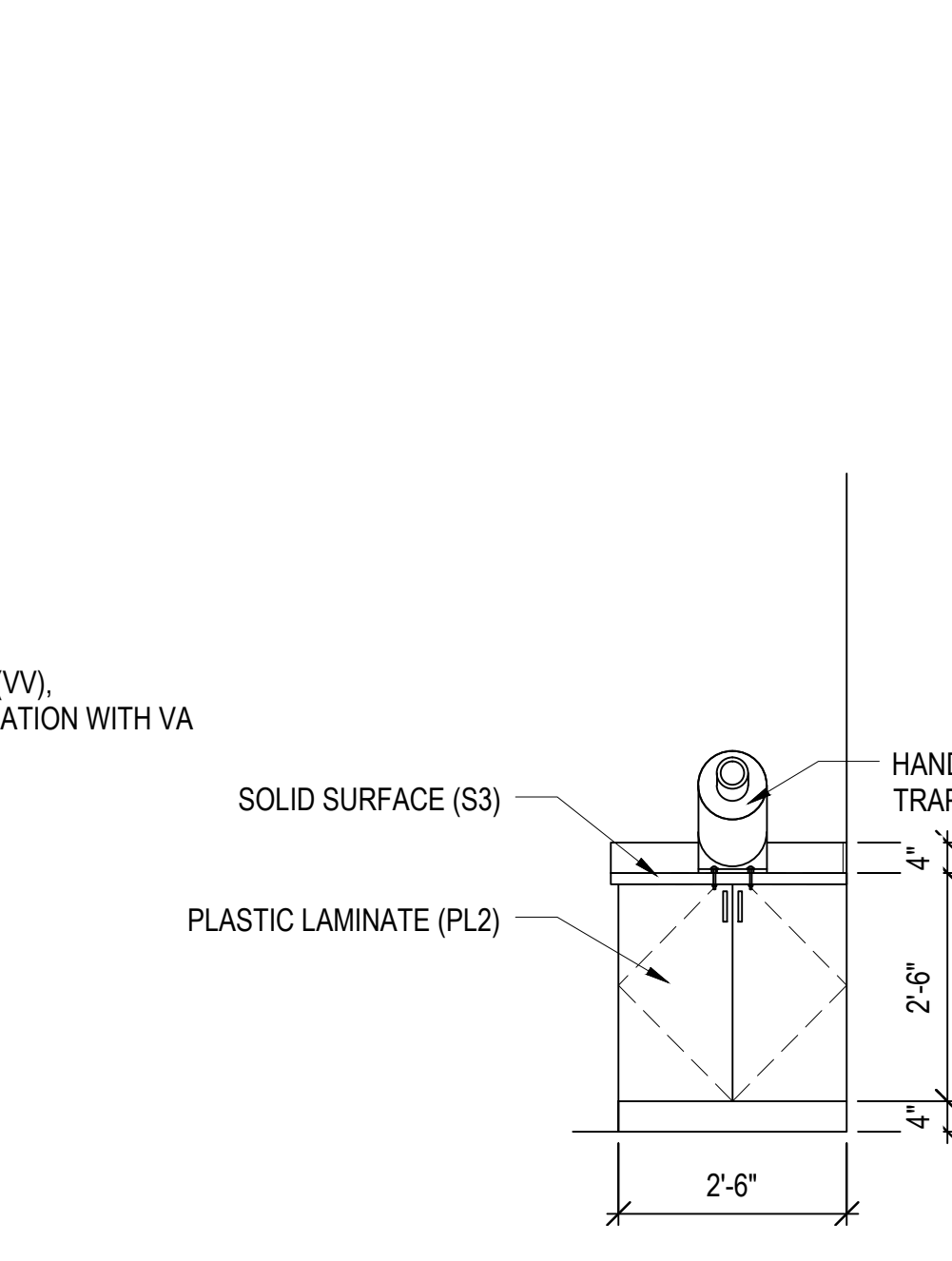
1 CASEWORK ELEV. - OPERATIONS ROOM A  
AS452 1/2" = 1'-0"



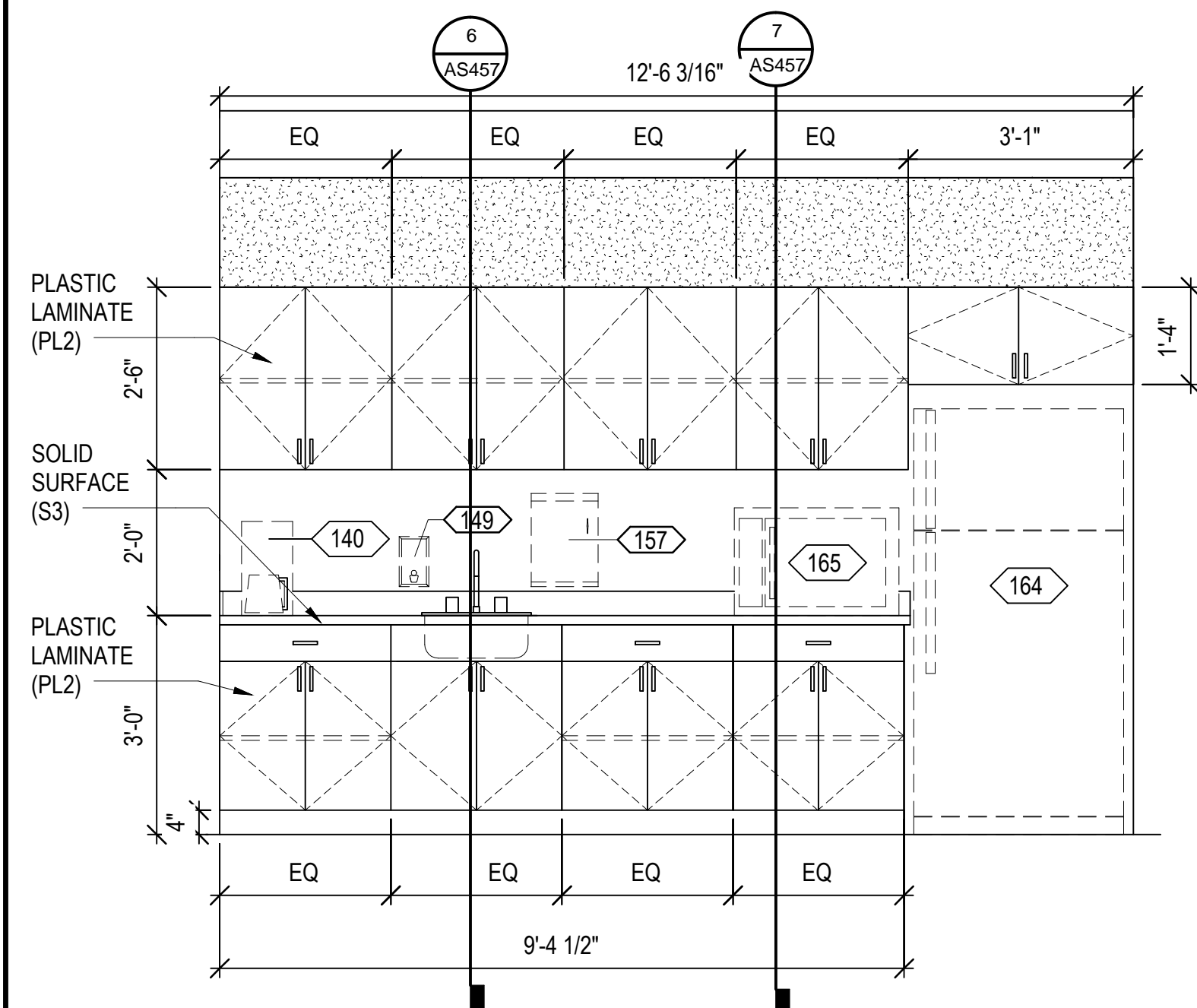
2 CASEWORK ELEV. - OPERATIONS ROOM B  
AS452 1/2" = 1'-0"



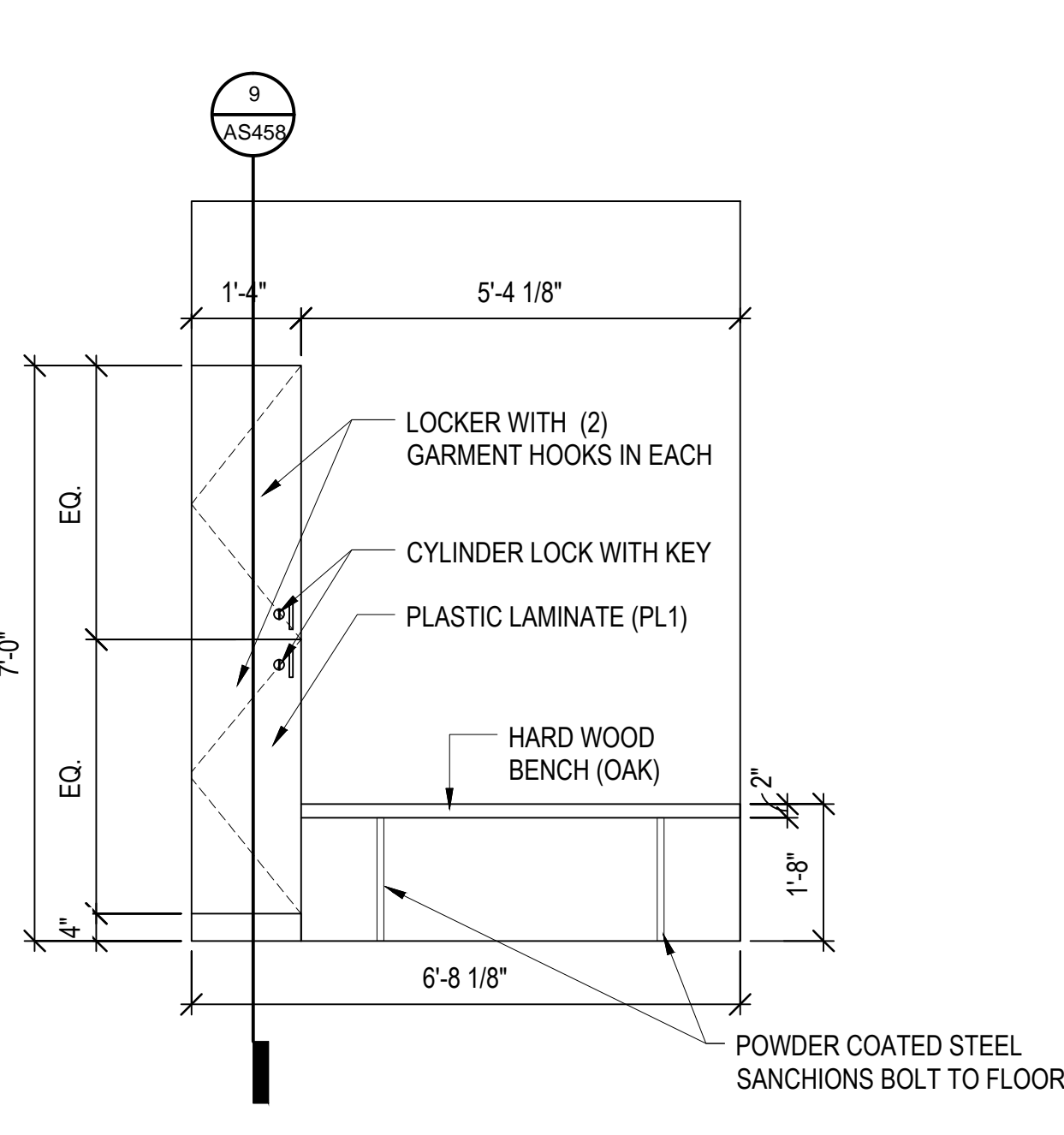
3 CASEWORK ELEV. - OPERATIONS ROOM C  
AS452 1/2" = 1'-0"



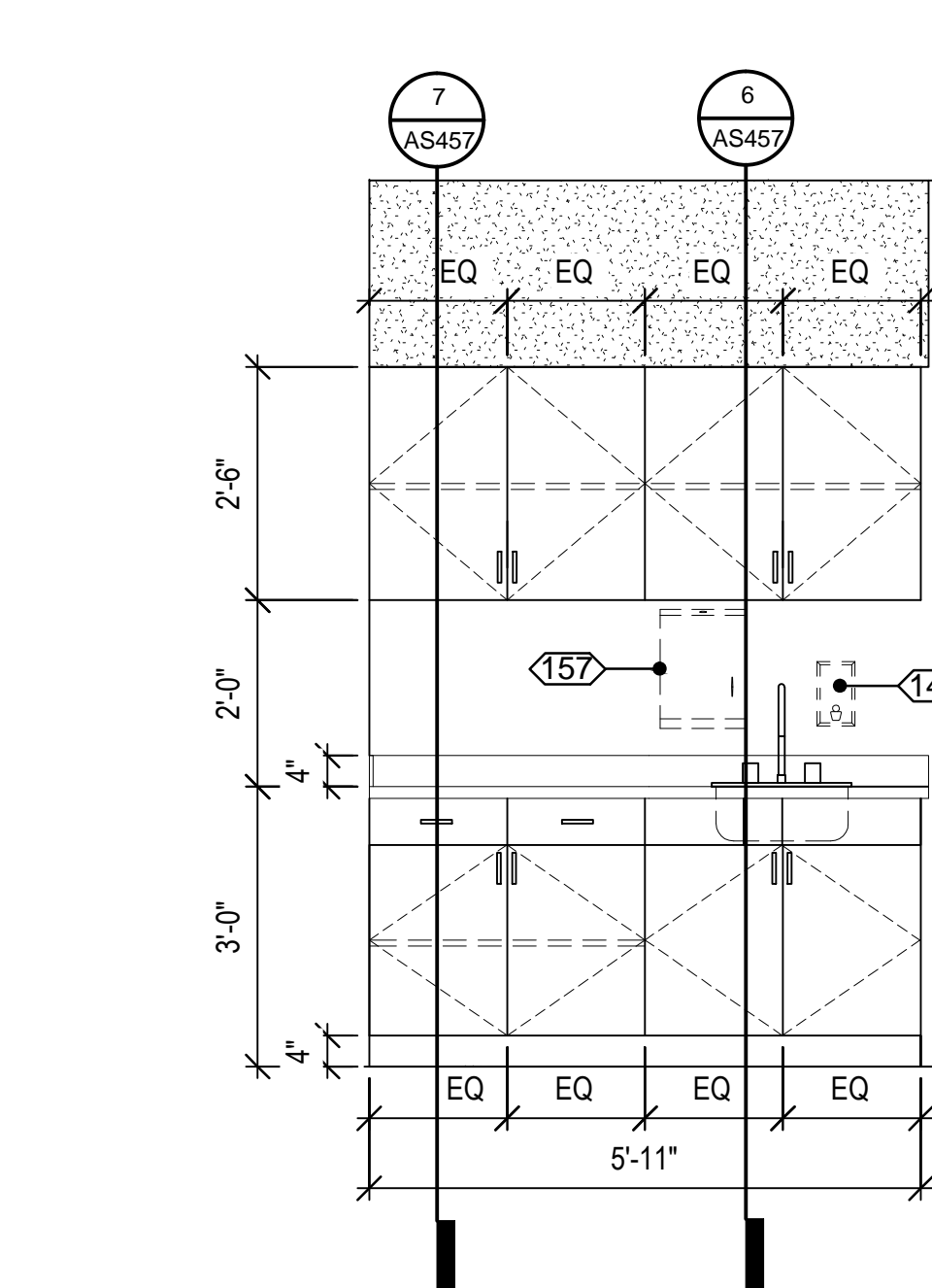
4 CASEWORK ELEVATIONS - SEC. STG. VAULT  
AS452 1/2" = 1'-0"



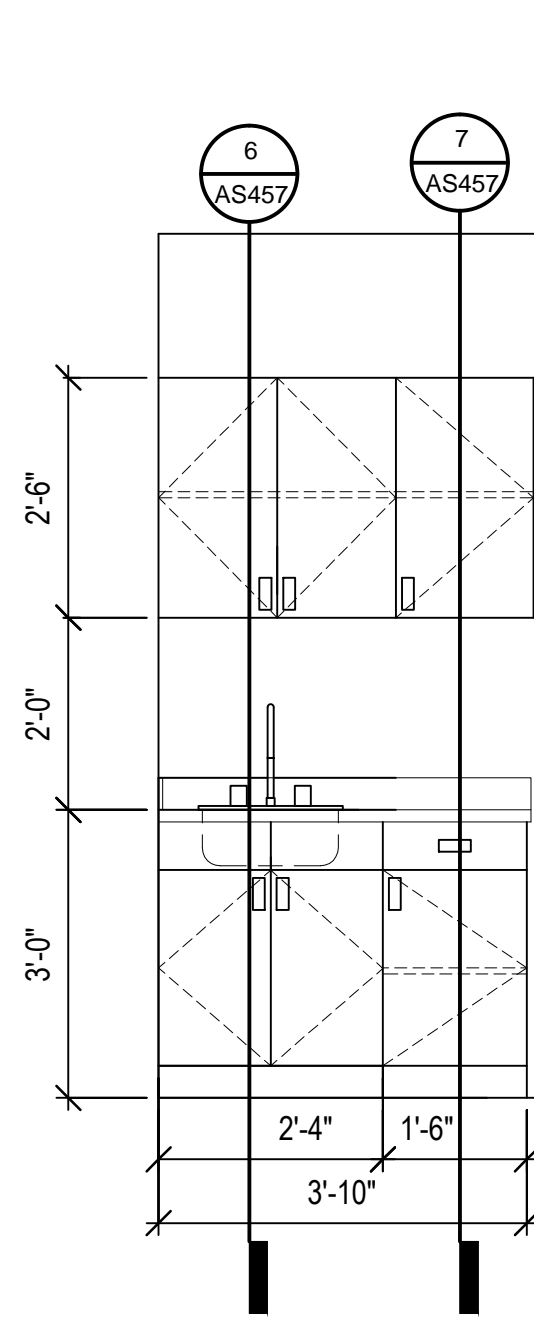
5 CASEWORK ELEV. - BREAKROOM  
AS452 1/2" = 1'-0"



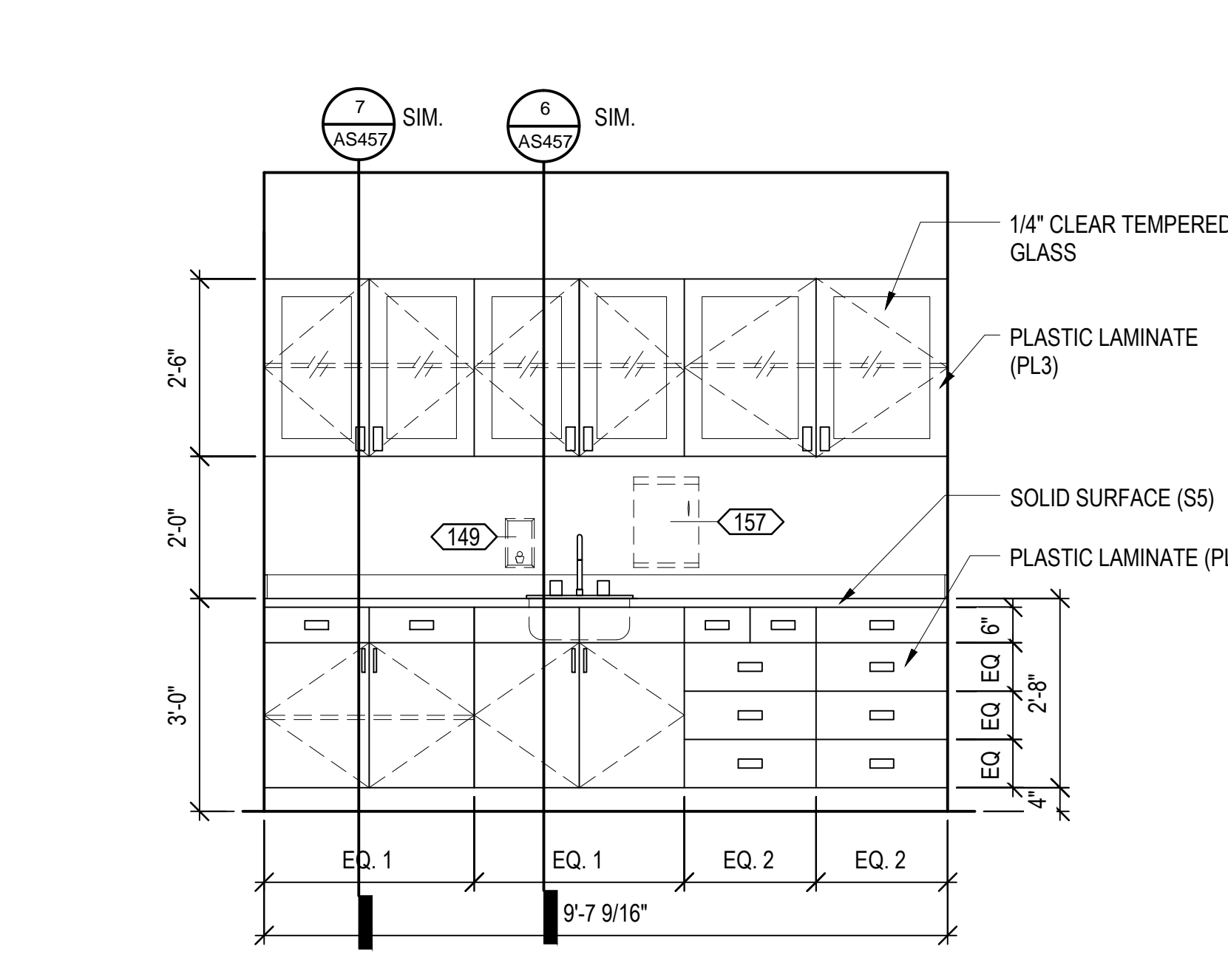
6 CASEWORK ELEV. -RADIOLOGY DRESSING AREA  
AS452 1/2" = 1'-0"



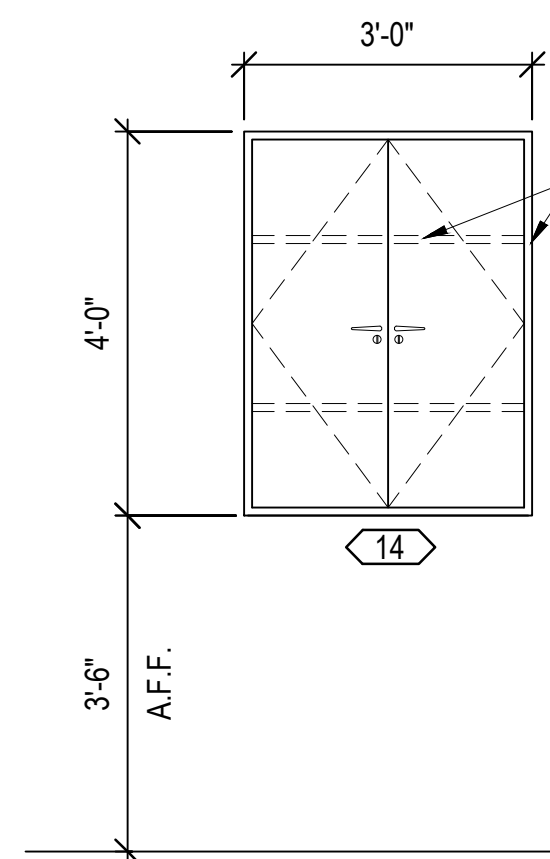
7 CASEWORK ELEV. - ULTRASOUND  
AS452 1/2" = 1'-0"



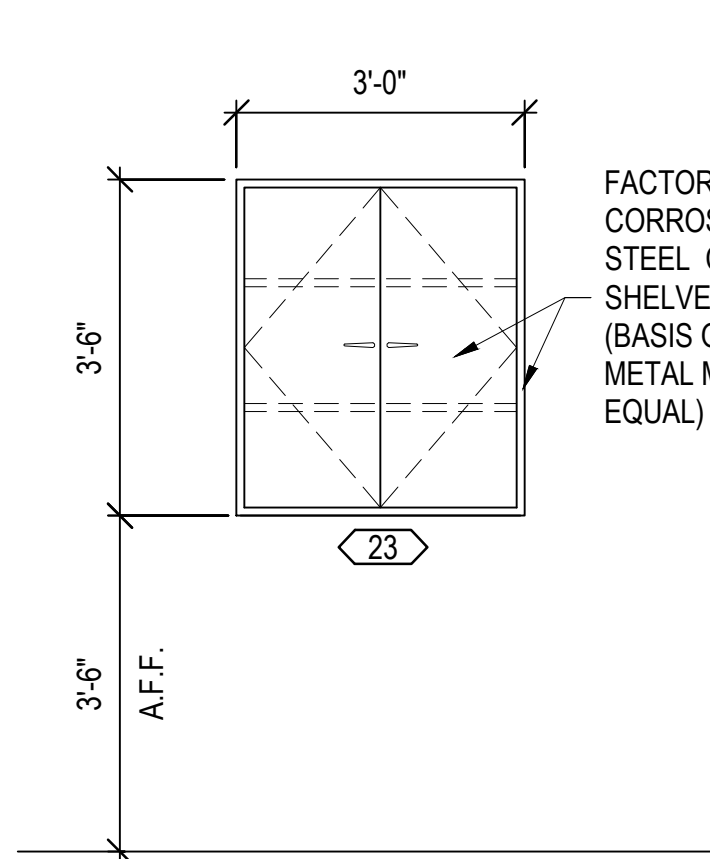
8 CASEWORK ELEV. -VISION SCREENING  
AS452 1/2" = 1'-0"



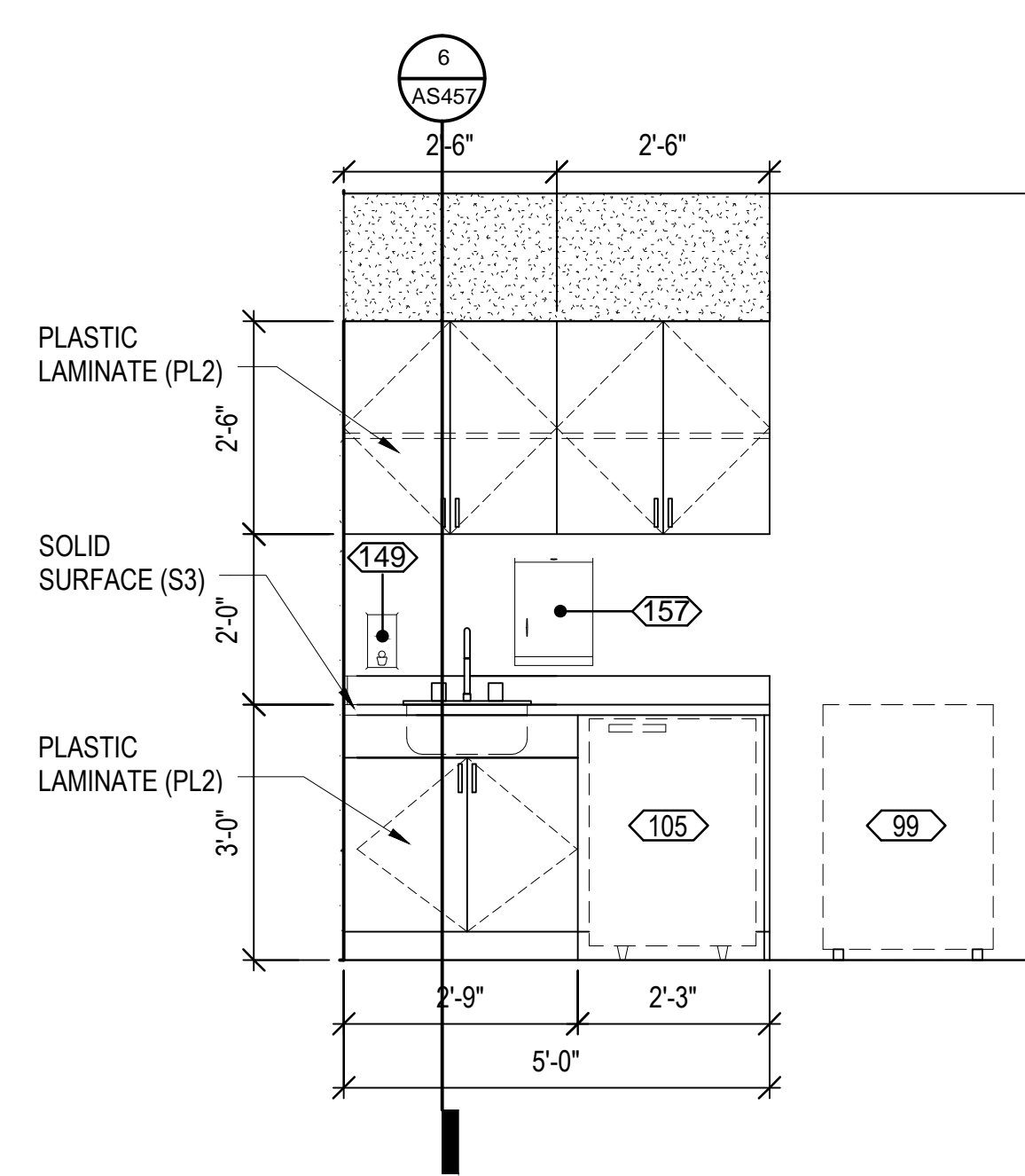
9 CASEWORK ELEV. - INSTR. STG & STER.  
AS452 1/2" = 1'-0"



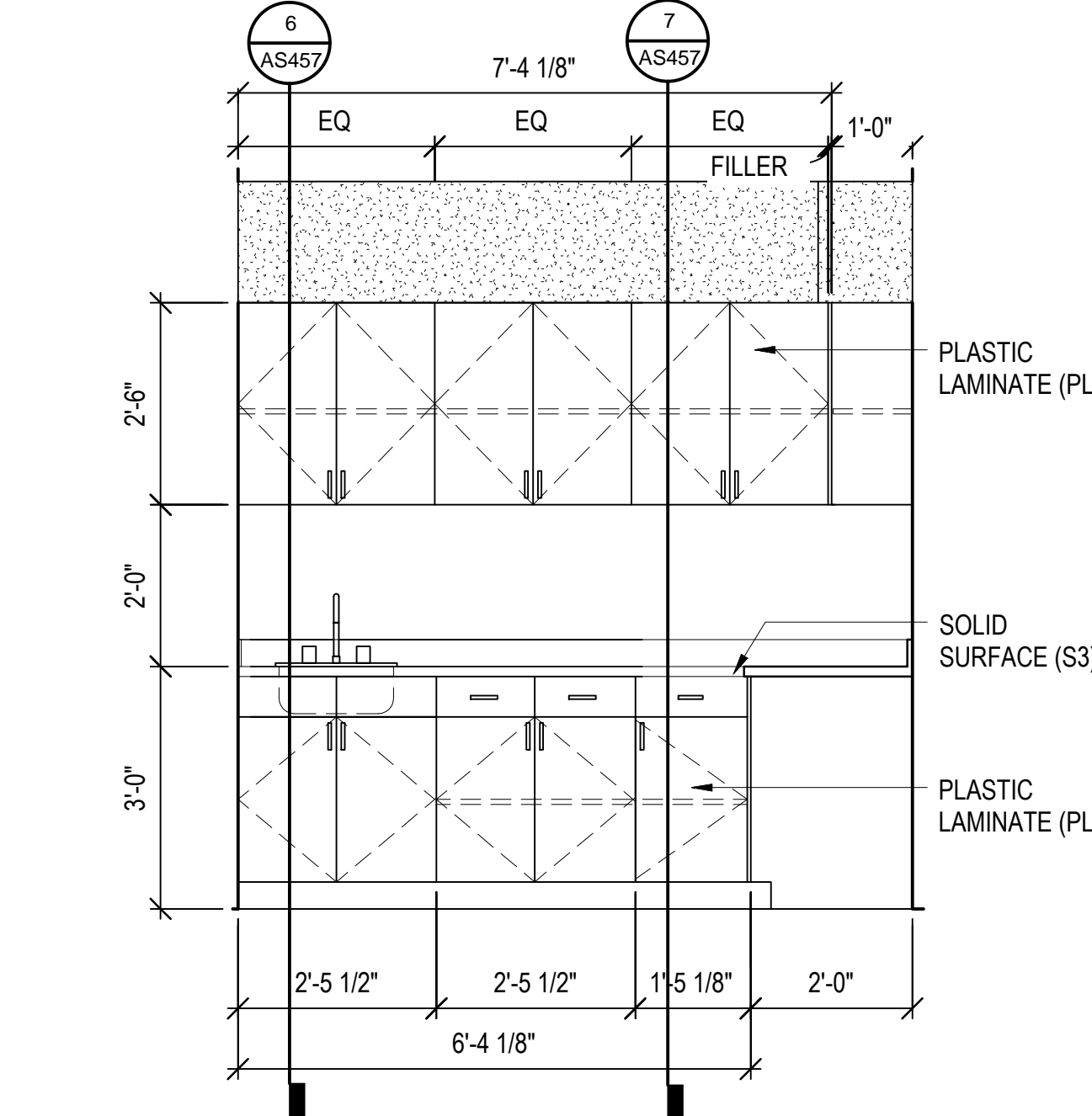
10 WALL HUNG CABINET - EQUIP. #14 (CC)  
AS452 1/2" = 1'-0"



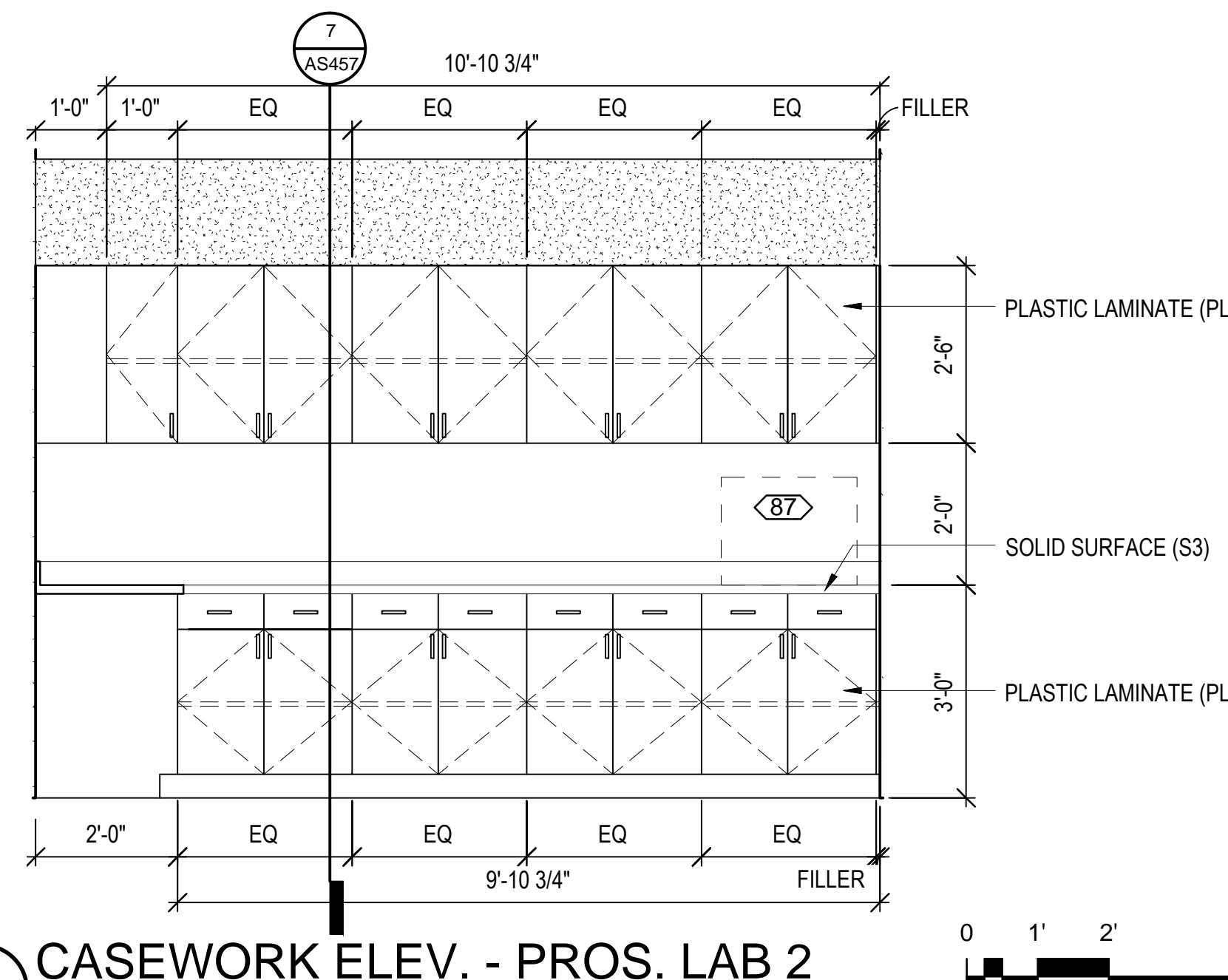
11 WALL HUNG CABINET - EQUIP. #31A (CC)  
AS452 1/2" = 1'-0"



12 CASEWORK ELEV. - MEDICINE ROOM D12  
AS452 1/2" = 1'-0"



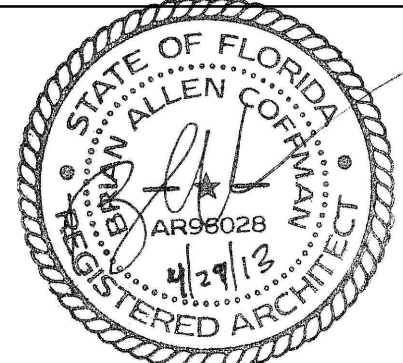

13 CASEWORK ELEV. - PROS. LAB  
AS452 1/2" = 1'-0"



14 CASEWORK ELEV. - PROS. LAB 2  
AS452 1/2" = 1'-0"

0 1' 2' 4'  
SCALE: 1/2" = 1'-0"

FINAL SUBMISSION / FULLY SPRINKLERED

<b>CONSULTANTS:</b> CIVIL: KENNETH HORNE & ASSOCIATES 7201 NORTH 9TH AVENUE, STE. 6 PENSACOLA, FLORIDA 32504 PH: (850) 471-9005 FX: (850) 471-0093 LANDSCAPE ARCHITECT: CSA GROUP, INC. 6300 PICCADILLY SQUARE DRIVE MOBILE, ALABAMA 36609 PH: (251) 344-4023 FX: (251) 344-4052 COMM/DS: SCHMIDT CONSULTING GROUP, INC. 40 S. PALAFOX PLACE, STE. 300 PENSACOLA, FLORIDA 32502 PH: (850) 438-0050 FX: (850) 432-8631 SURVEYORS: KOI TECHNOLOGIES, INC. 10401 HIGHLAND MANOR DRIVE, SUITE 120 TAMPA, FLORIDA 33610 PH: (813) 740-2300 FX: (813) 740-2300		<b>ARCHITECT/ENGINEERS:</b>  <b>BES DESIGN/BUILD</b> BES DESIGN/BUILD, LLC 766 Middle St, Fairhope, AL 36532 Phone: 251.990.5778 Fax: 251.990.3716		<b>Drawing Title</b> CASEWORK ELEVATIONS <b>Approved Project Director</b>		<b>Project Title</b> CONSTRUCT VA OUTPATIENT CLINIC, PANAMA CITY <b>Location</b> PANAMA CITY, FLORIDA <b>Date</b> APRIL 2013		<b>Project Number</b> 520-326 <b>Building Number</b> - <b>Drawing Number</b> AS452 Dwg. 32 of 43		<b>Office of Construction and Facilities Management</b> 	
--	--	--	--	---	--	---	--	--	--	--	--