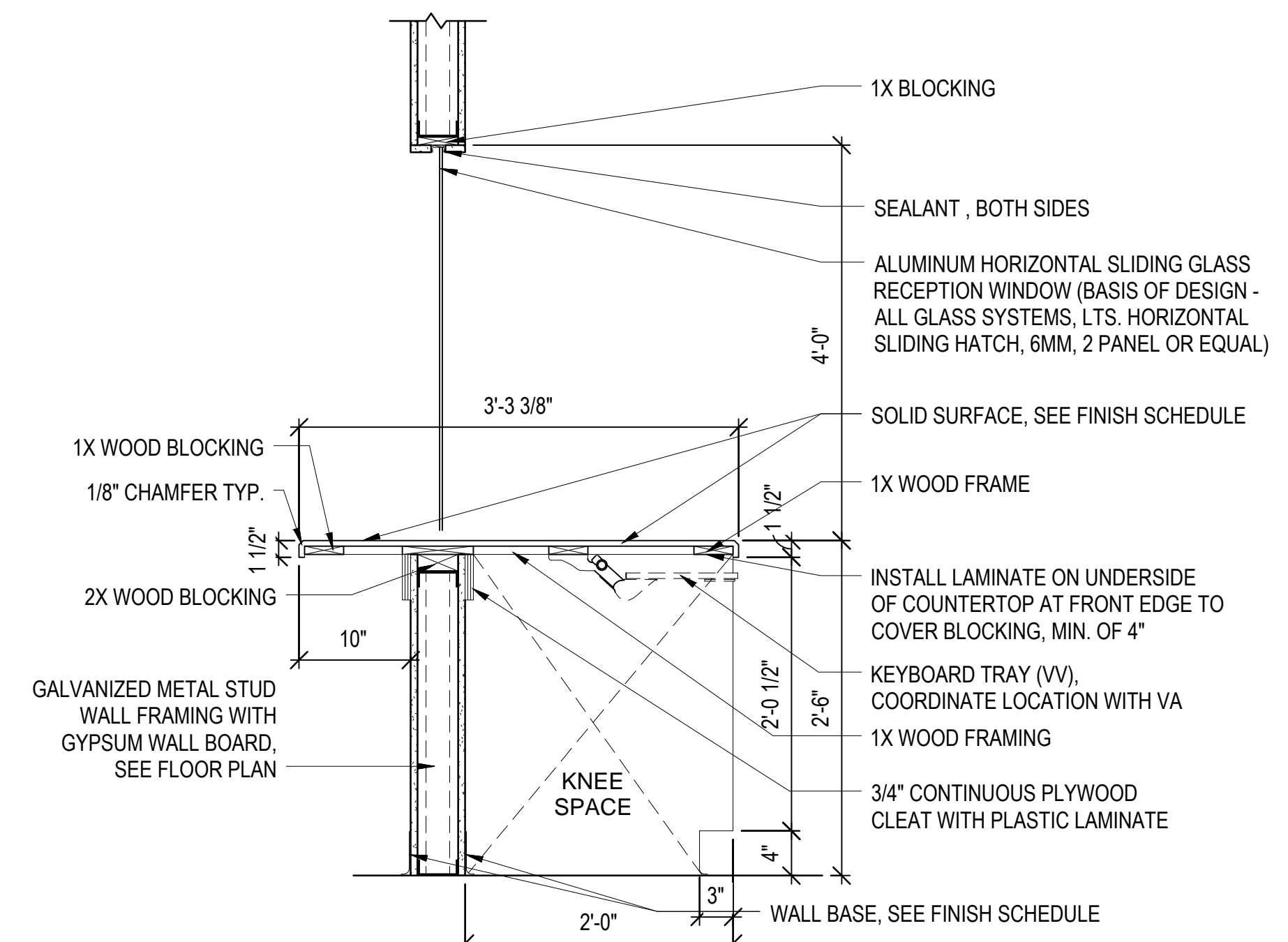
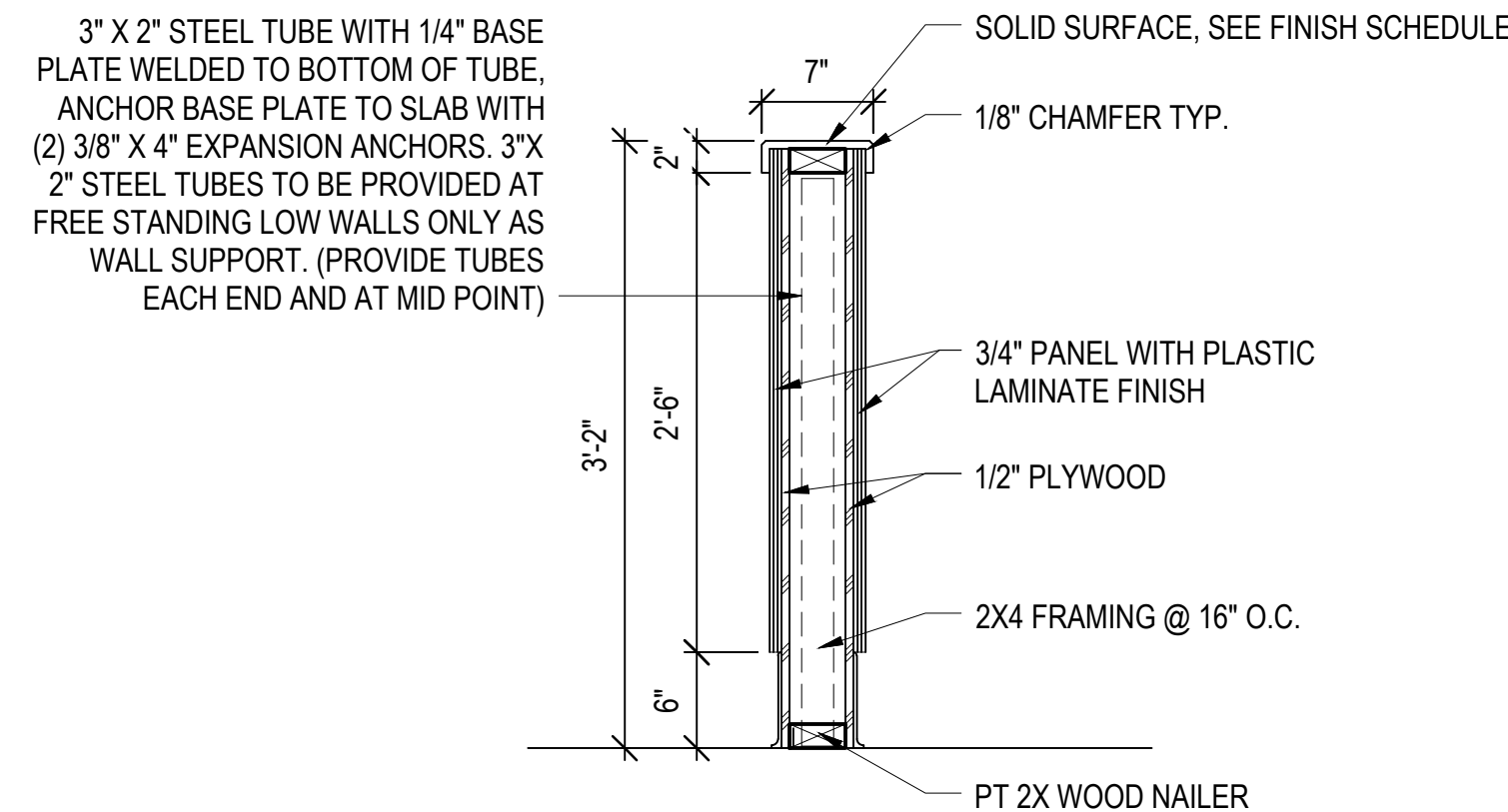
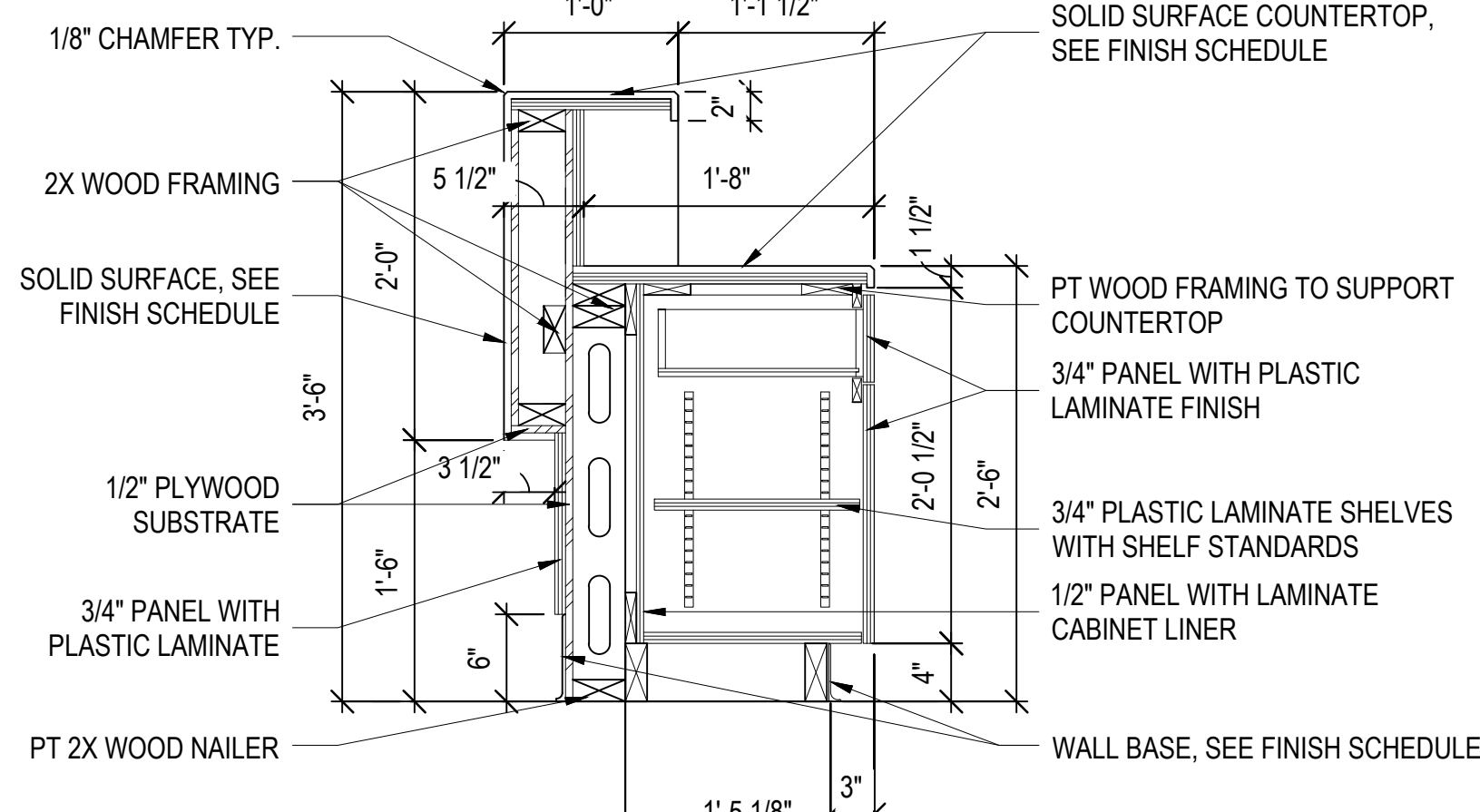


1. ALL COUNTERTOPS AND BACKSPLASHES ARE TO BE SOLID SURFACE WITH 1/8" CHAMFER AT EXPOSED EDGES. SEE FINISH SCHEDULE FOR COLOR.
2. ALL CABINET BODIES, DOORS AND DRAWERS TO BE PLASTIC LAMINATE PANELS. SEE FINISH SCHEDULE FOR COLOR.
3. ALL ADJUSTABLE SHELVES TO BE PLASTIC LAMINATE ON ADJUSTABLE SHELF STANDARDS.
4. REFER TO SPEC SECTION 12.32.00 AND 06.61.16 FOR SPECIFICATIONS FOR BUILT-IN CASEWORK SHOWN ON THIS DRAWING.
5. ALL CABINET PULLS TO BE 3" RECESSED PULLS, U.N.O.
6. PROVIDE BLOCKING IN WALL FOR ATTACHMENT OF CABINETS.

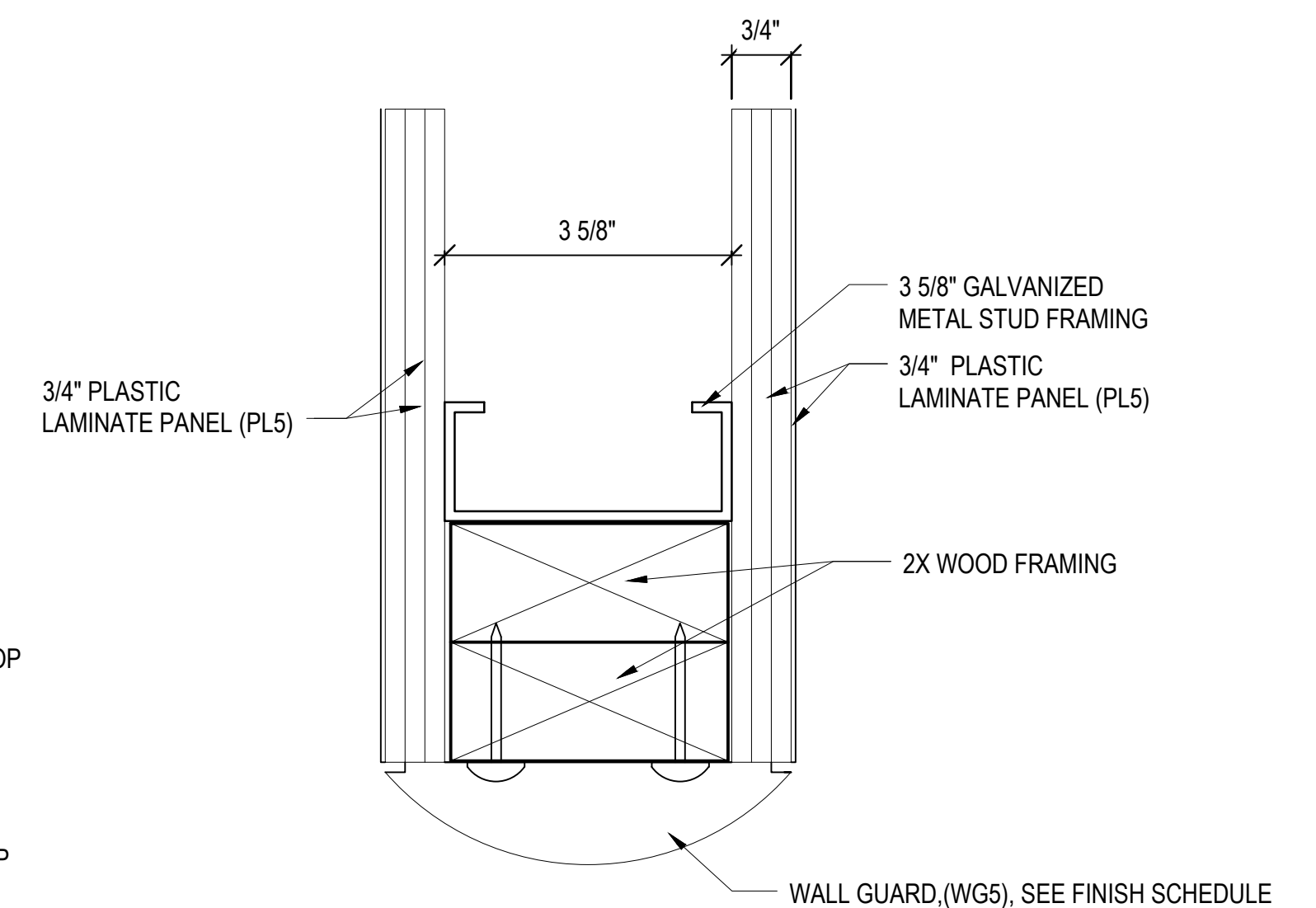
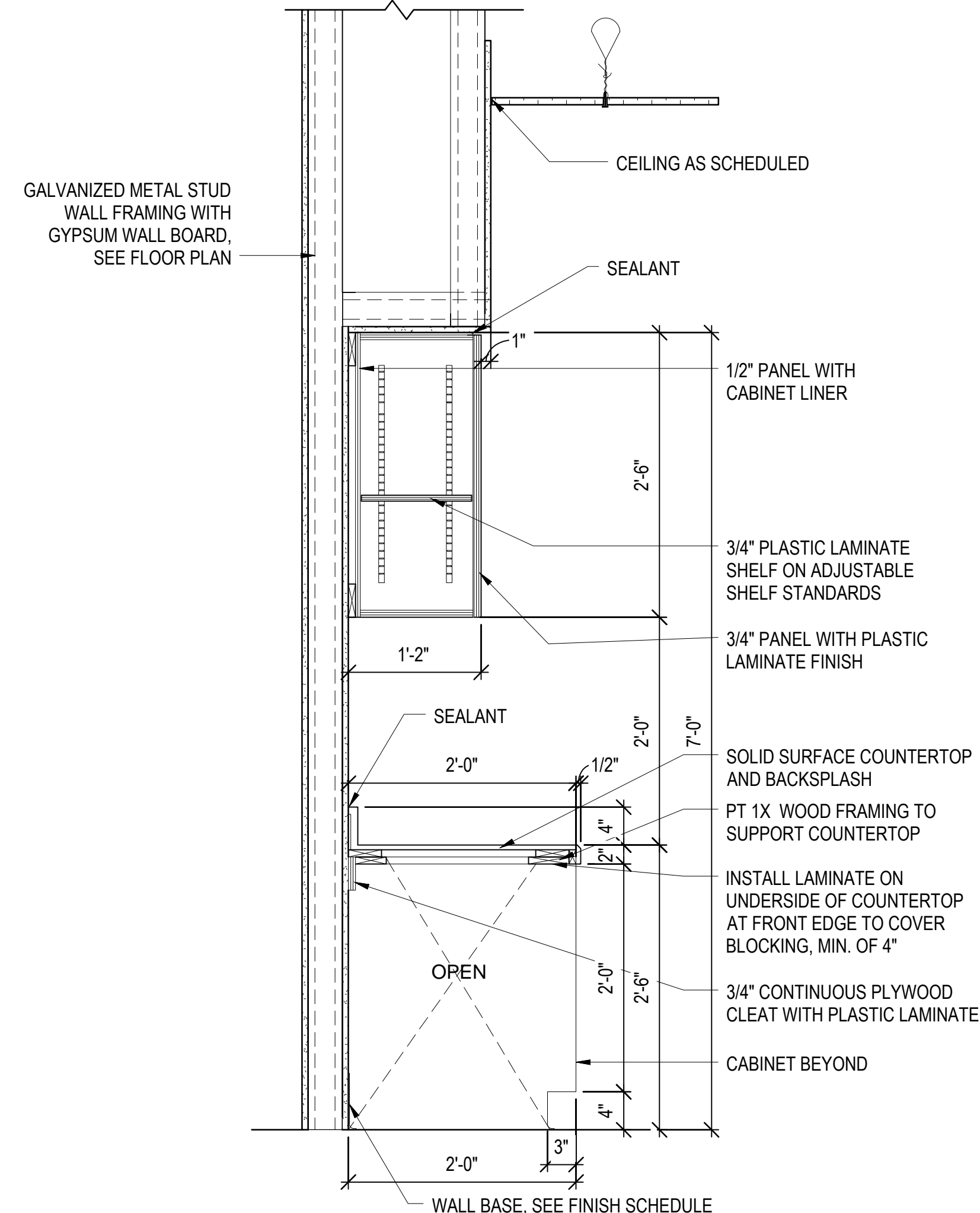
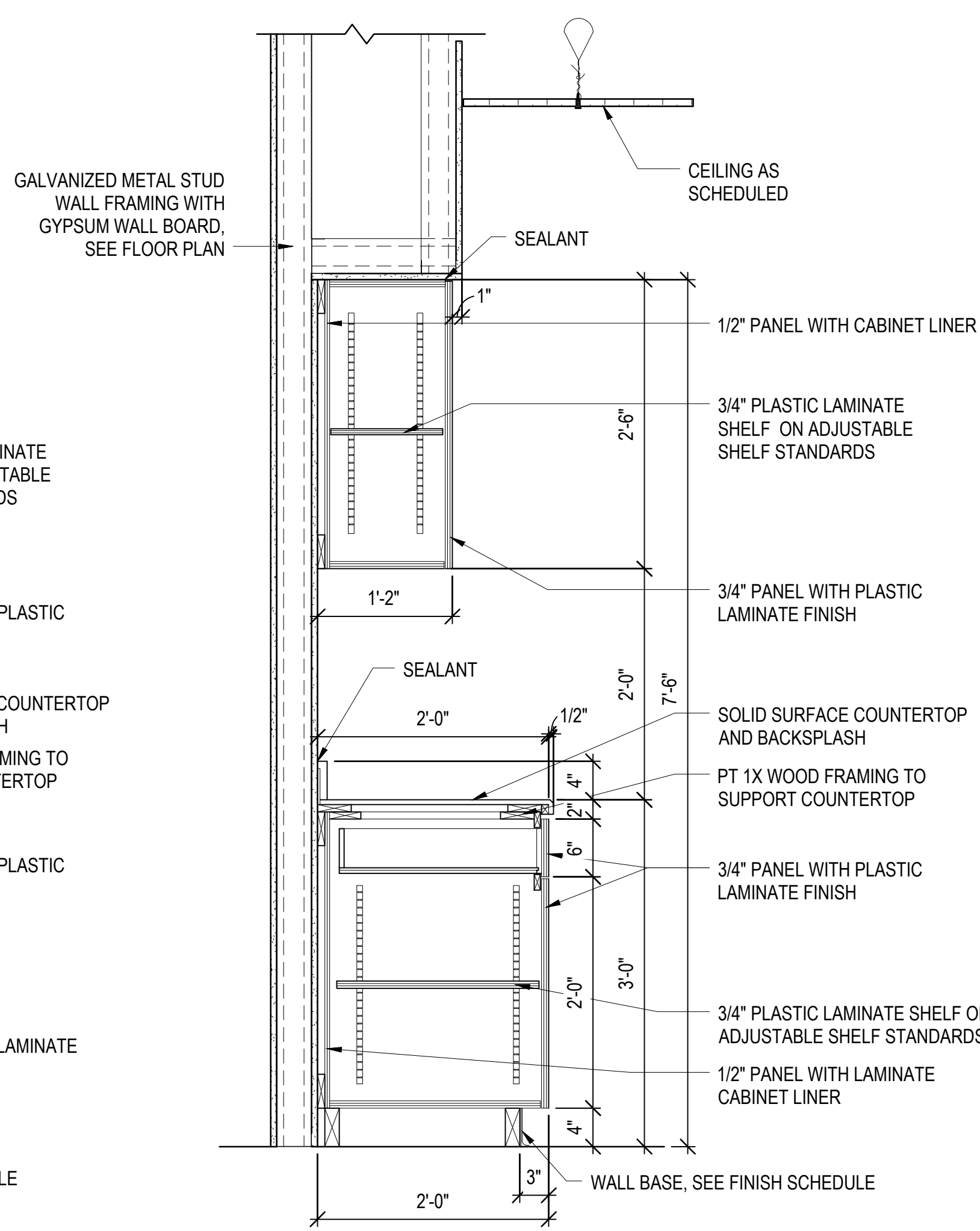
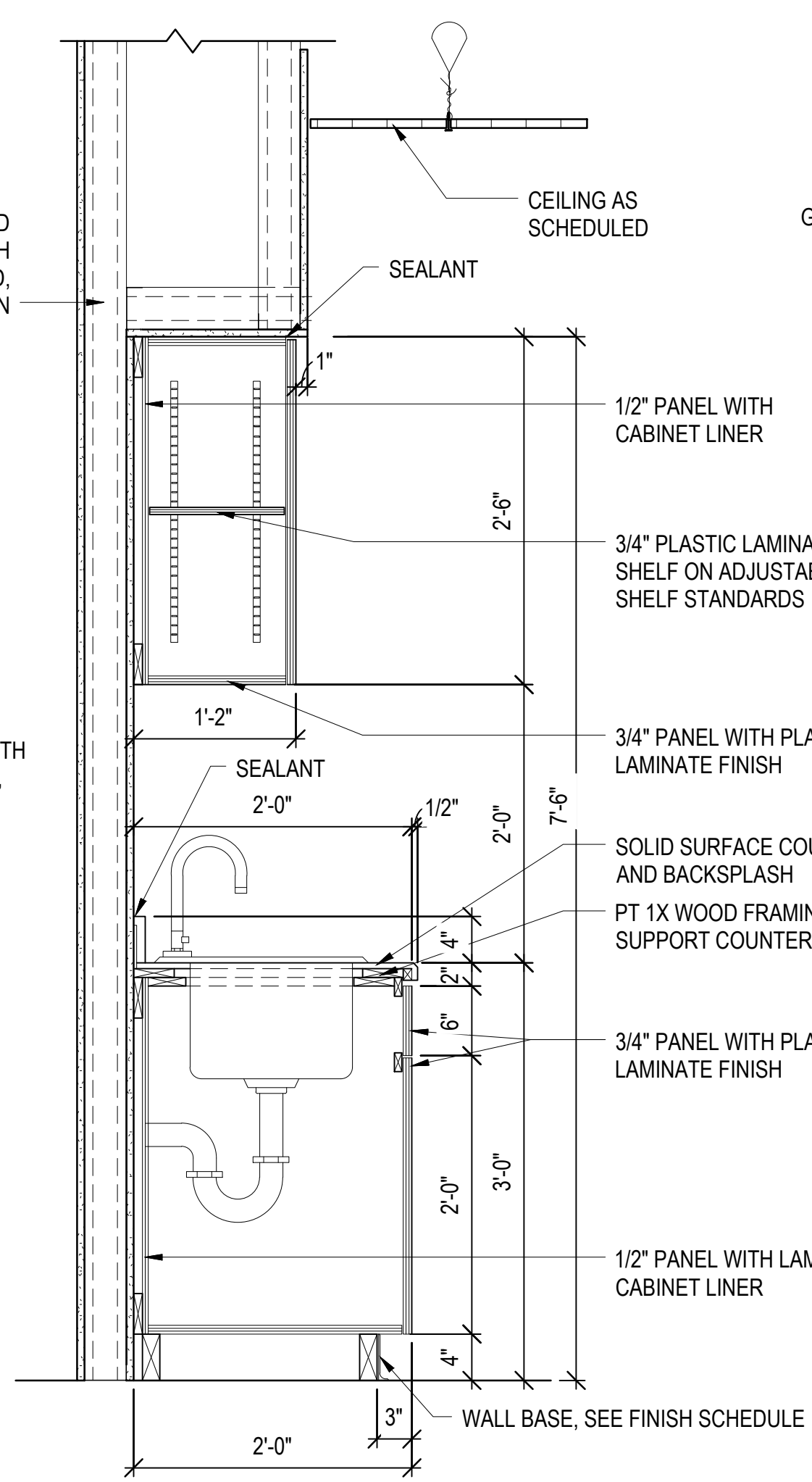


4 WIN  
AS457 1° = 1'-0"

1 CAS  
AS457 1" = 1'-0"

2 CAS  
AS457 1" = 1'-0"

3 CAS  
AS457 1" = 1'-0"



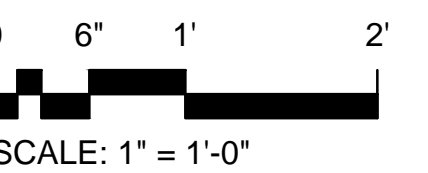
AS457 6" = 1'-0"

AS457 1" = 1'-0"

AS457 1" = 1'-0"

AS457 1" = 1'-0"

AS457 1" = 1'-0"

[illegible]