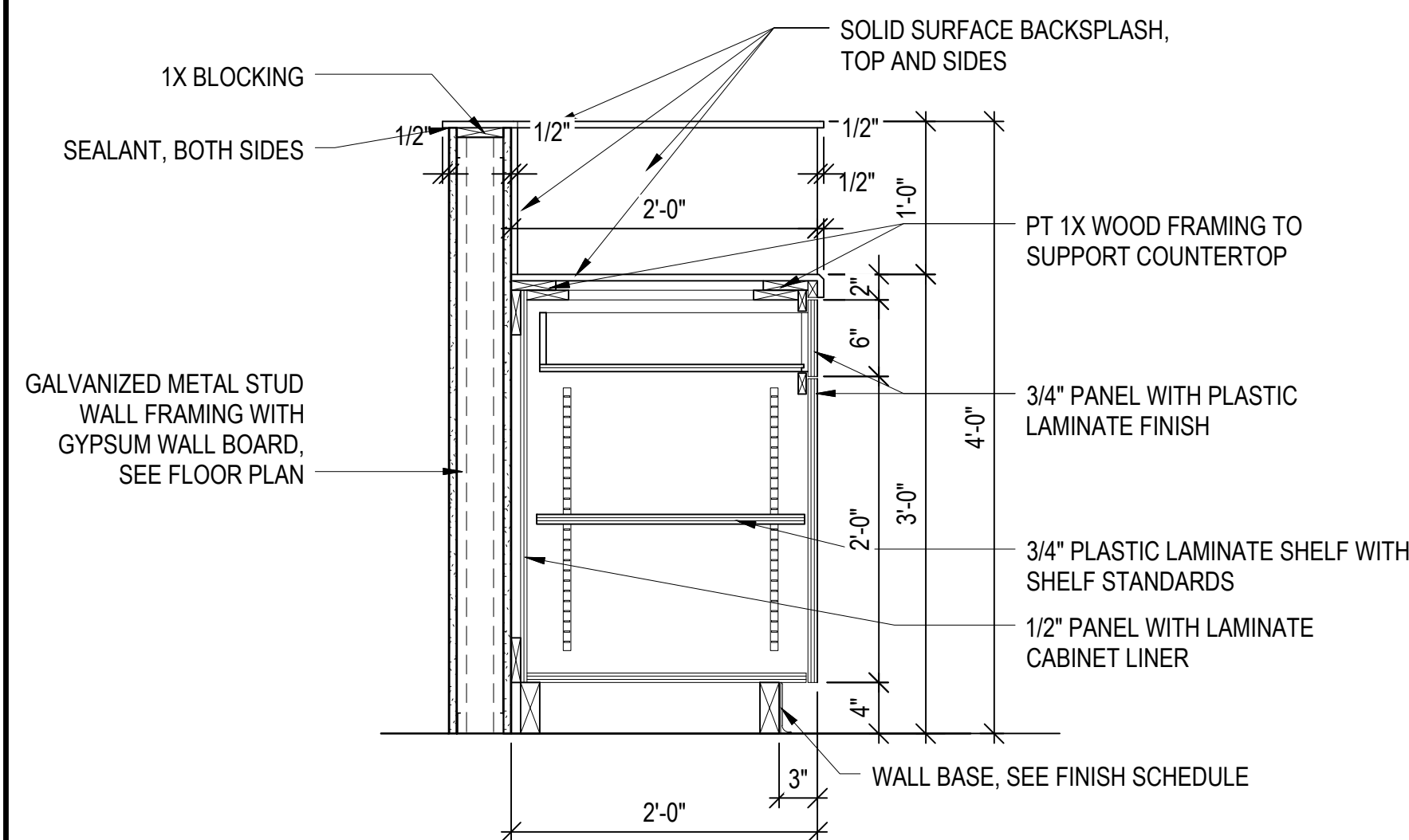
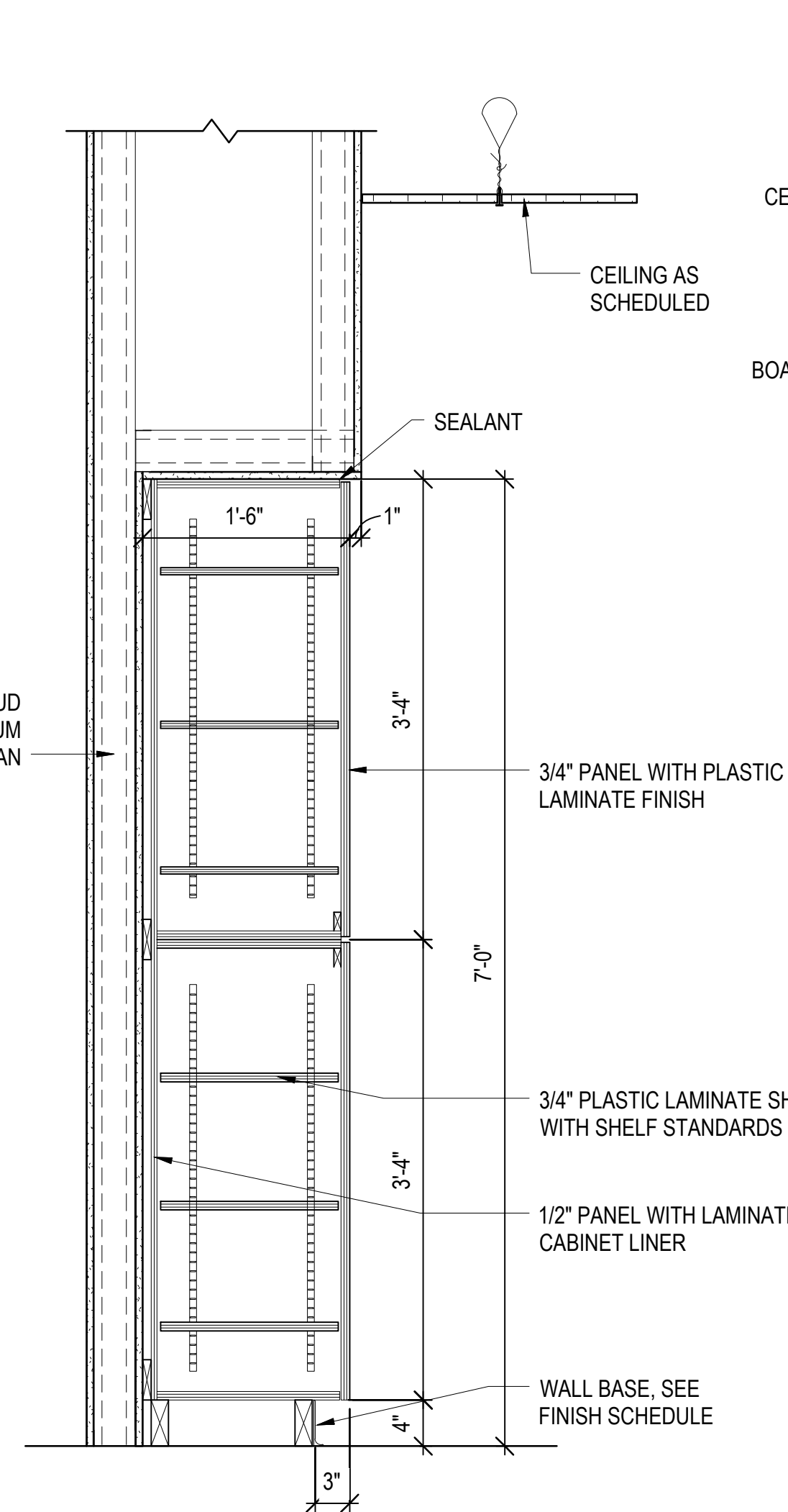


CASEWORK NOTES

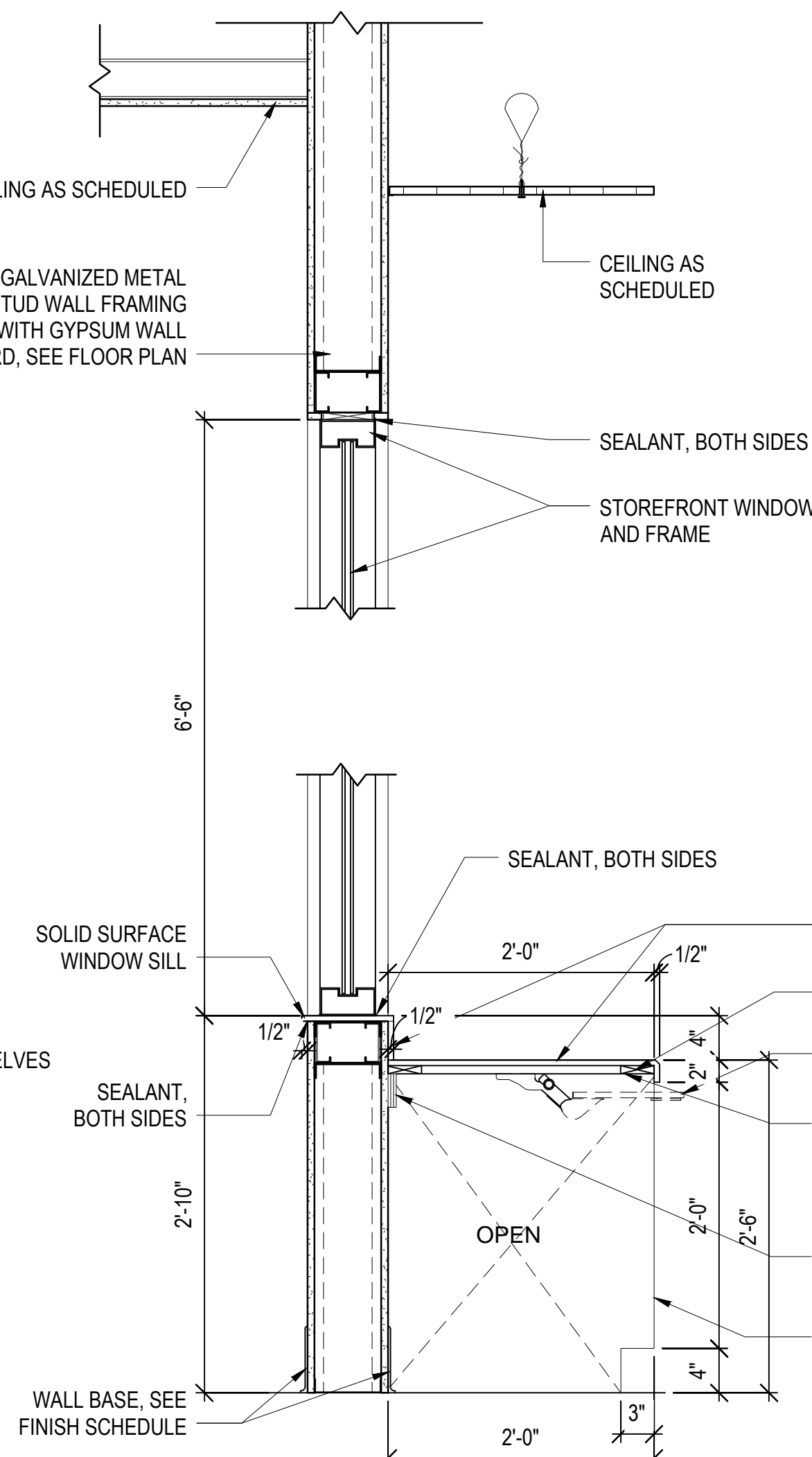
1. ALL COUNTERTOPS AND BACKSPASHES ARE TO BE SOLID SURFACE WITH 1/8" CHAMFER AT EXPOSED EDGES, SEE FINISH SCHEDULE FOR COLOR.
2. ALL CABINET BODIES, DOORS AND DRAWERS TO BE PLASTIC LAMINATE PANELS, SEE FINISH SCHEDULE FOR COLOR.
3. ALL ADJUSTABLE SHELVES TO BE PLASTIC LAMINATE ON ADJUSTABLE SHELF STANDARDS.
4. REFER TO SPEC SECTION 12.32.00 AND 06.61.16 FOR SPECIFICATIONS FOR BUILT-IN CASEWORK SHOWN ON THIS DRAWING.
5. ALL CABINET PULLS TO BE 3" RECESSED PULLS, U.N.O.
6. PROVIDE BLOCKING IN WALL FOR ATTACHMENT OF CABINETS.



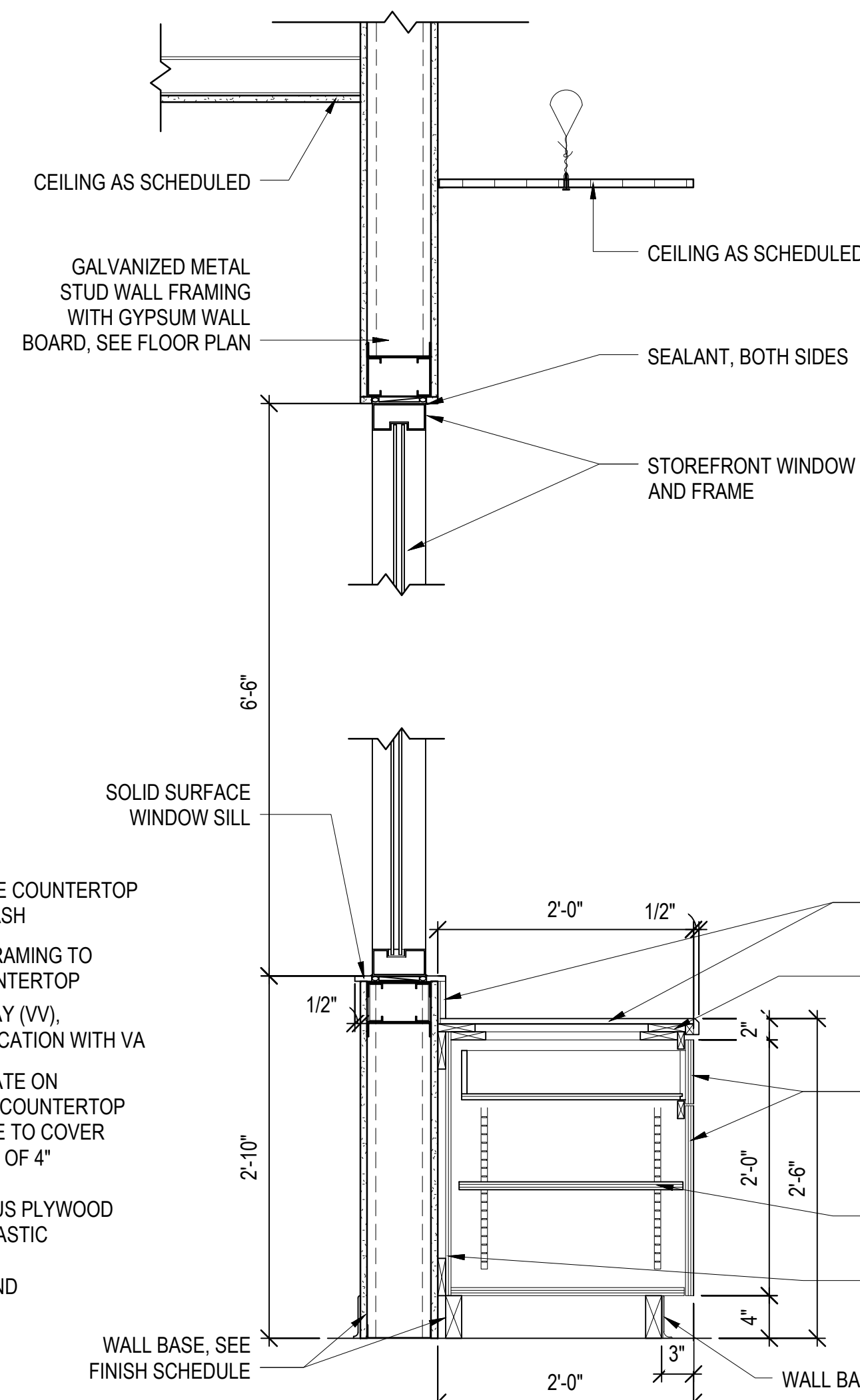
1 CASEWORK SECTION - BLOOD COLL. A
AS458 1" = 1'-0"



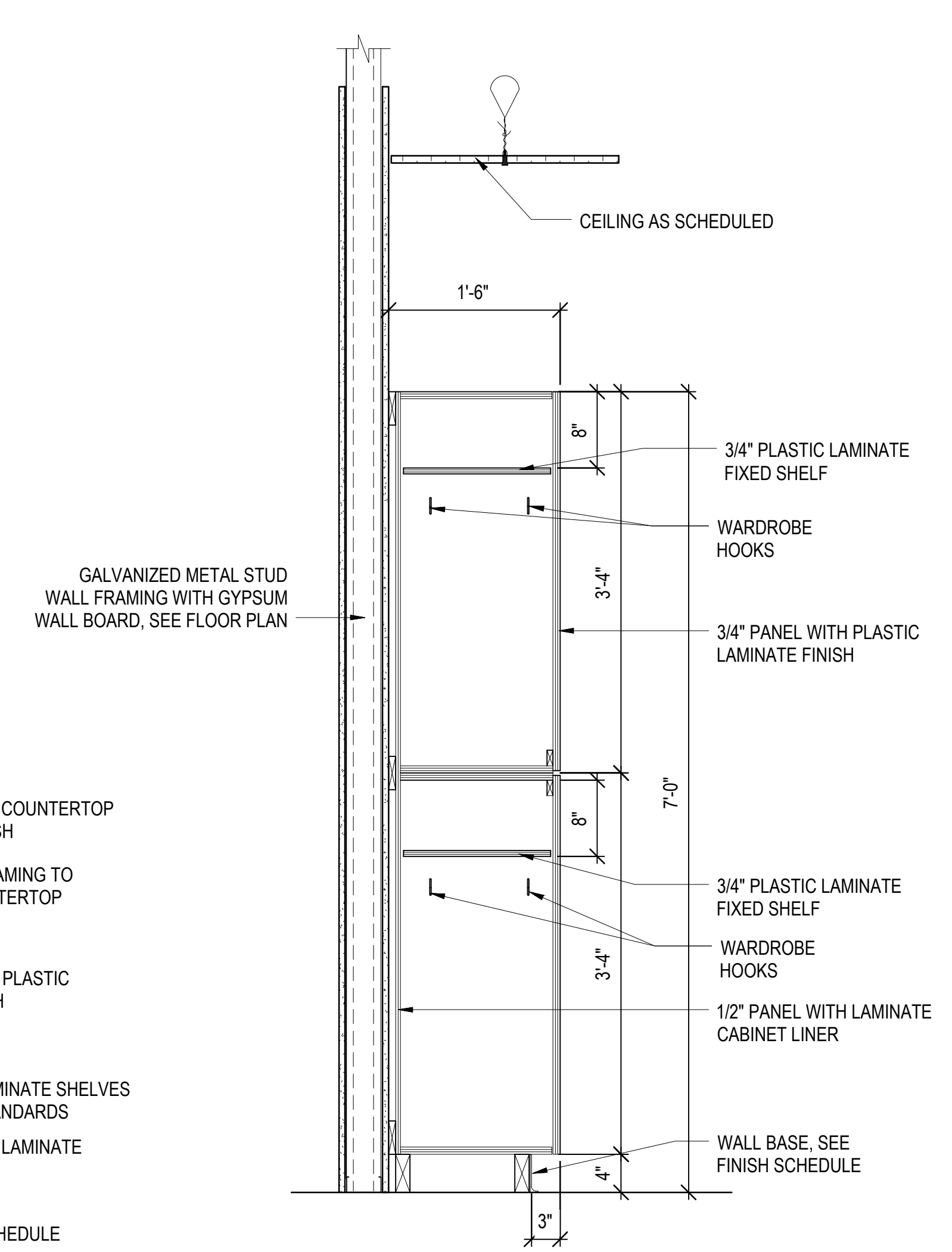
2 CASEWORK SECTION - BLOOD COLL. B
AS458 1" = 1'-0"



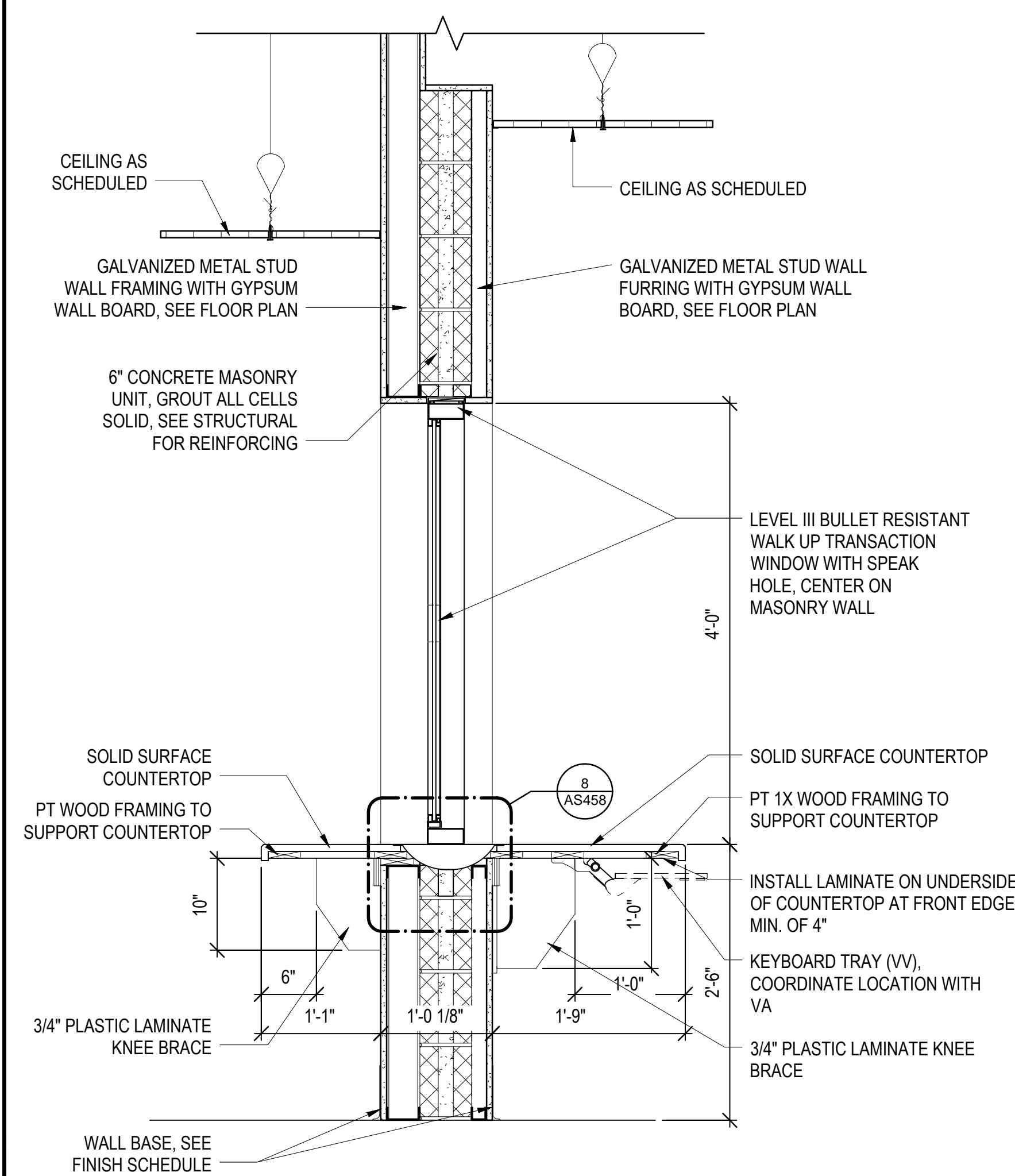
3 CASEWORK SECTION - SECURITY A
AS458 1" = 1'-0"



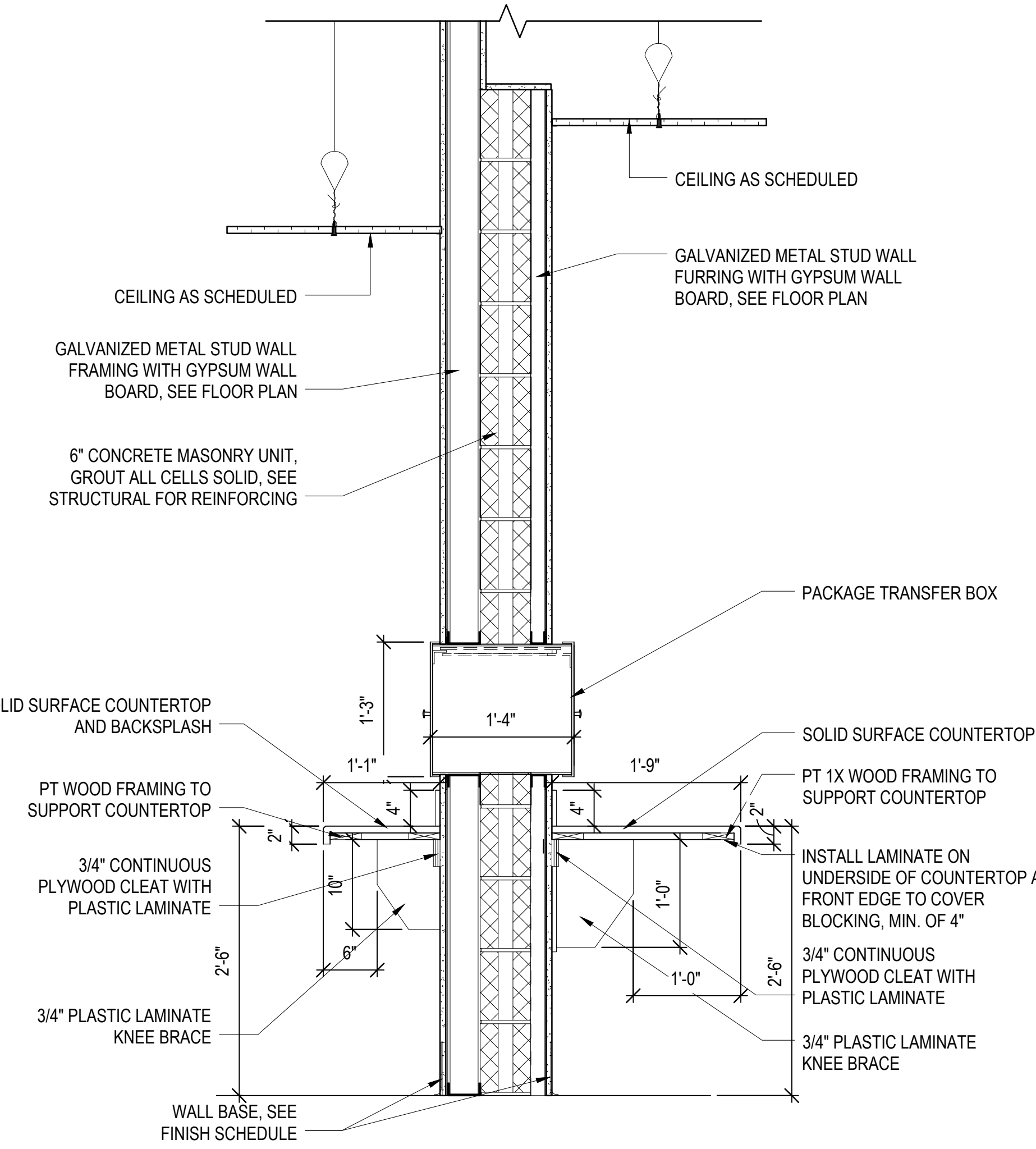
4 CASEWORK SECTION - SECURITY B
AS458 1" = 1'-0"



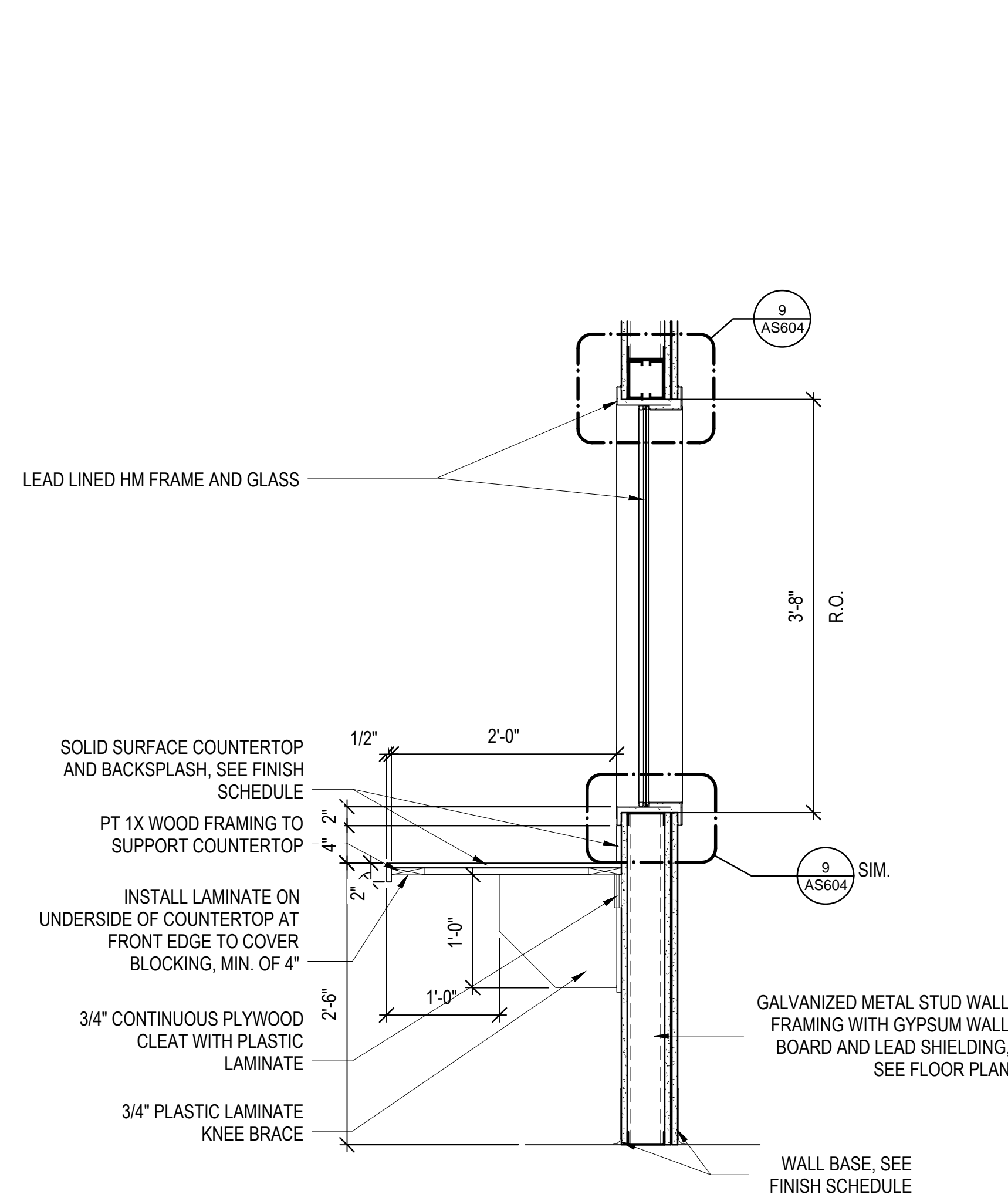
9 CASEWORK SECTION - RAD. DRESSING AREA
AS458 1" = 1'-0"



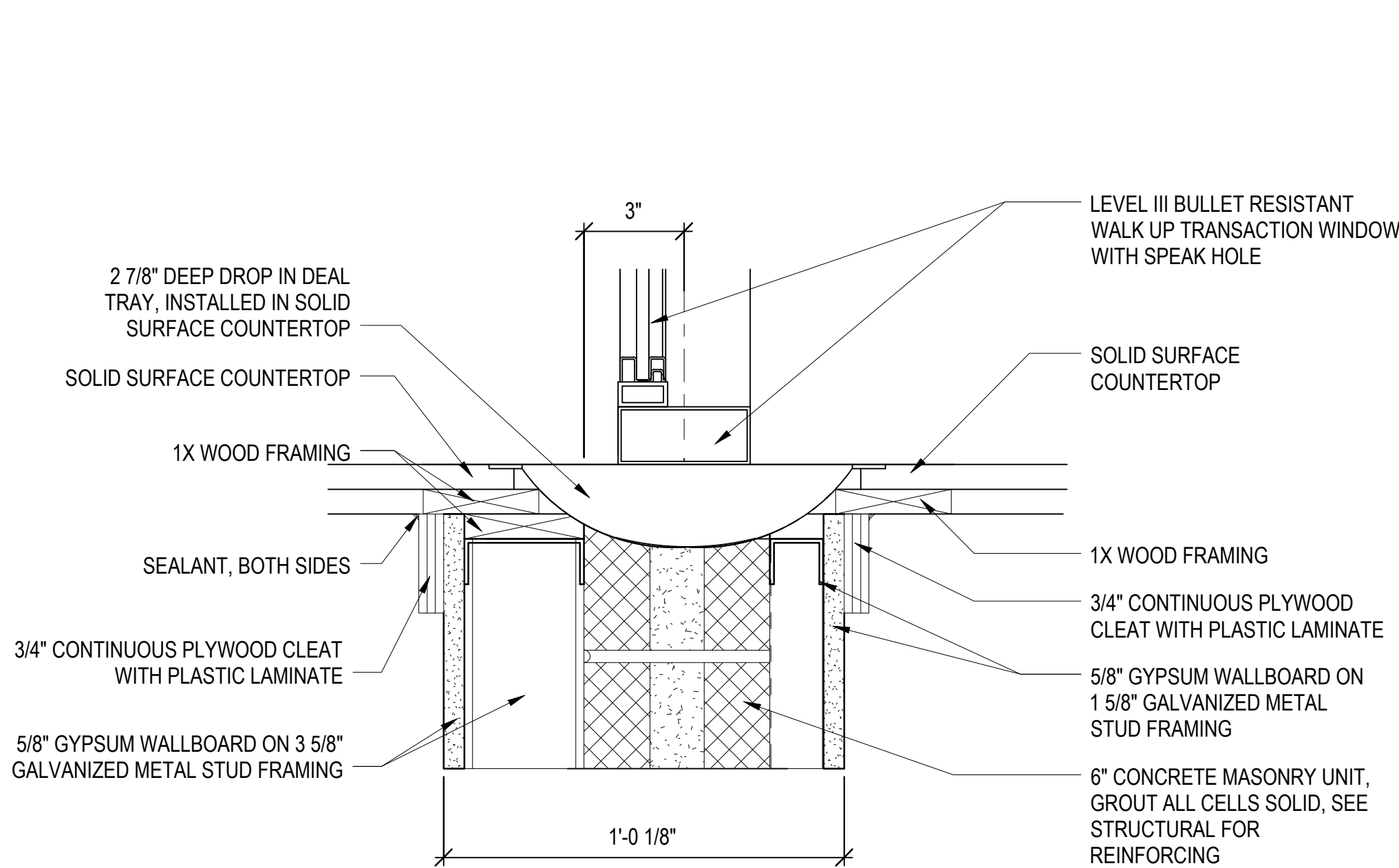
5 CASEWORK SECTION - PHARMACY WINDOW
AS458 1" = 1'-0"



6 CASEWORK SECTION - PHARMACY TRANSFER BOX
AS458 1" = 1'-0"



7 CASEWORK SECTION - RADIOLOGY
AS458 1" = 1'-0"



8 SECTION - PHARMACY WINDOW DEAL TRAY
AS458 3" = 1'-0"

0 6" 1' 2'
SCALE: 1" = 1'-0"

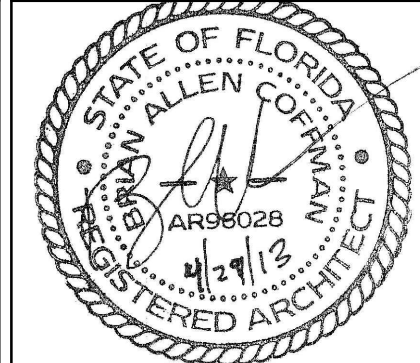
CONSULTANTS:

CIVIL:
KENNETH HORNE & ASSOCIATES
7201 NORTH 9TH AVENUE, STE. 300
PENSACOLA, FLORIDA 32504
PH: (850) 471-9005
FX: (850) 471-0093

COMM/BS:
SCHMIDT CONSULTING GROUP, INC.
40 S. PALAFOX PLACE, STE. 300
PENSACOLA, FLORIDA 32502
PH: (850) 438-0050
FX: (850) 432-8631

SURVEYORS:
KCI TECHNOLOGIES, INC.
10401 HIGHLAND MANOR DRIVE, SUITE 120
TAMPA, FLORIDA 33610
PH: (813) 740-2300

ARCHITECT/ENGINEERS:



BES DESIGN/BUILD, LLC
766 Middle St, Fairhope, AL 36532
Phone: 251.990.5778 Fax: 251.990.3716

Drawing Title
CASEWORK SECTIONS

Approved Project Director

FINAL SUBMISSION / FULLY SPRINKLERED

Project Title
CONSTRUCT VA OUTPATIENT
CLINIC, PANAMA CITY

Location
PANAMA CITY, FLORIDA

Date
APRIL 2013

Checked

Drawn

Project Number
520-326

Building Number
-

Drawing Number
AS458

Dwg. 37 of 43

Office of
Construction
and Facilities
Management

