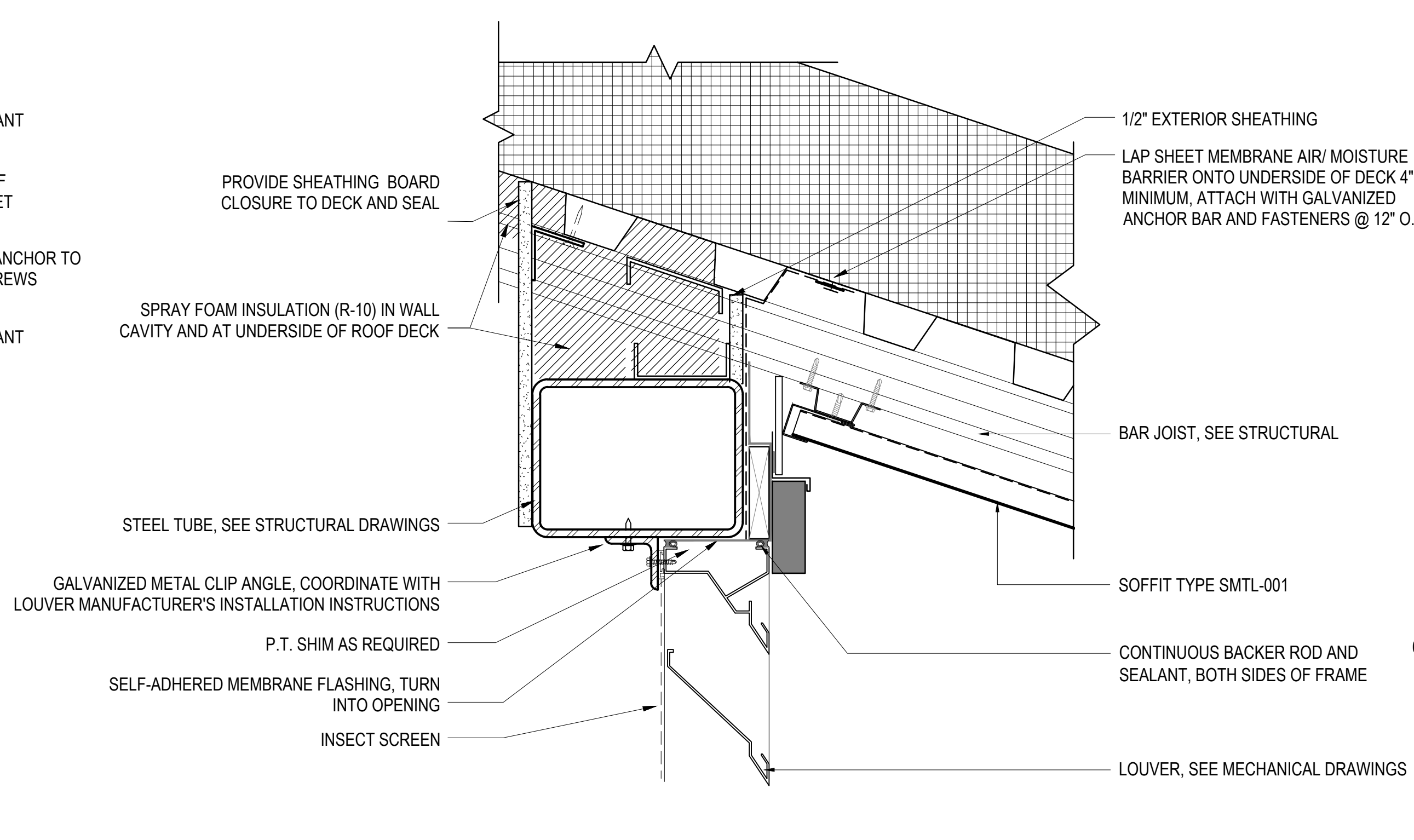
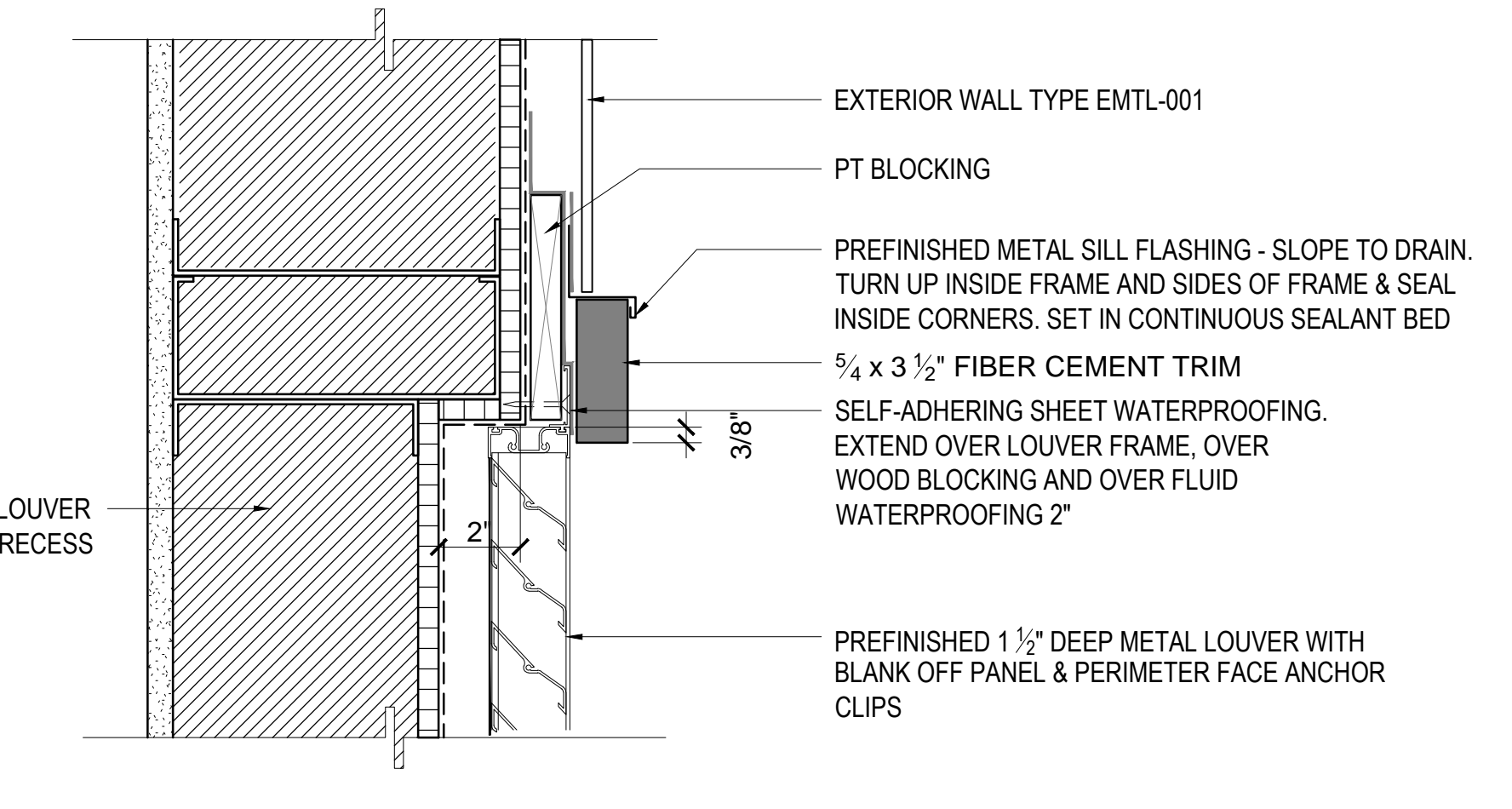


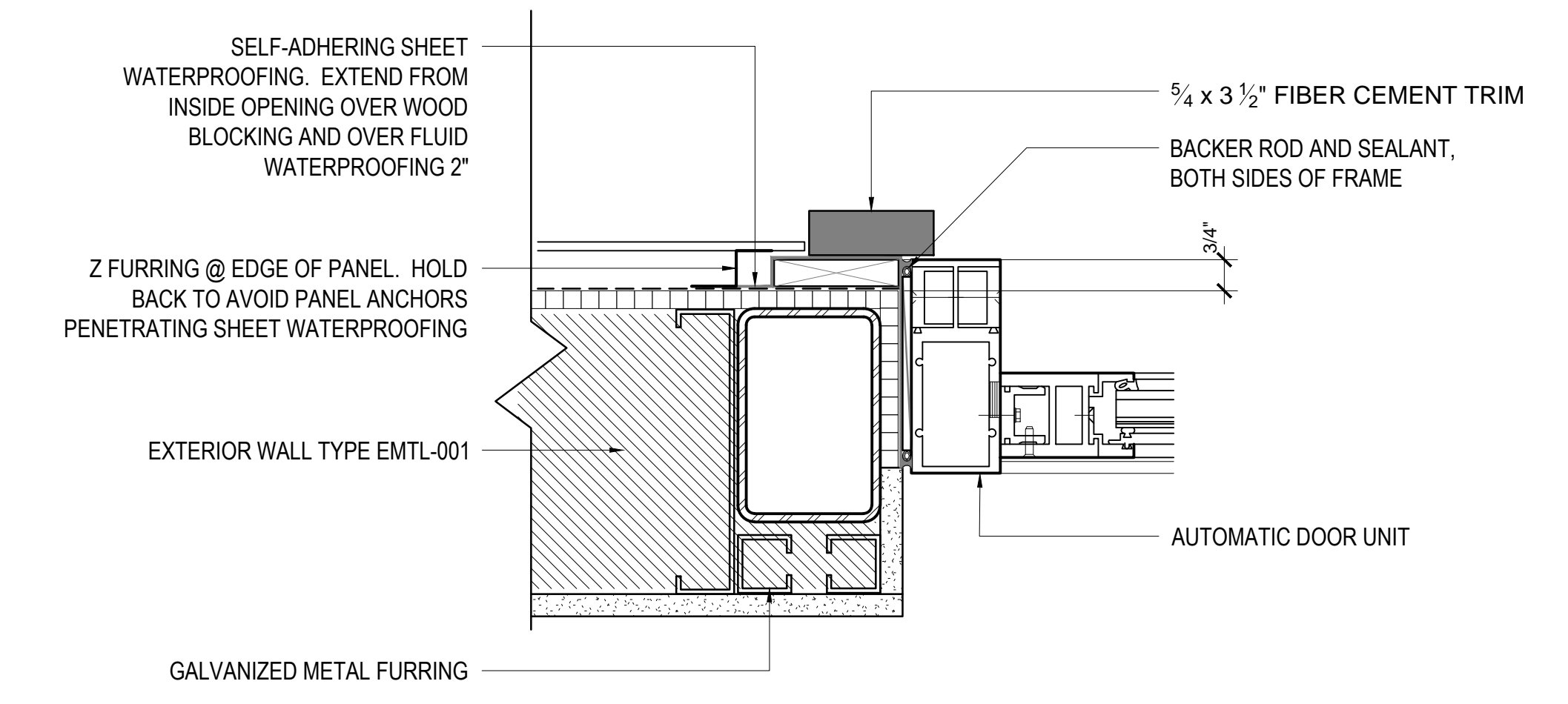
**1 EXT. AUTOMATIC SLIDING DOOR HEAD/TRANSOM DETAIL**  
AS605 3" = 1'-0"



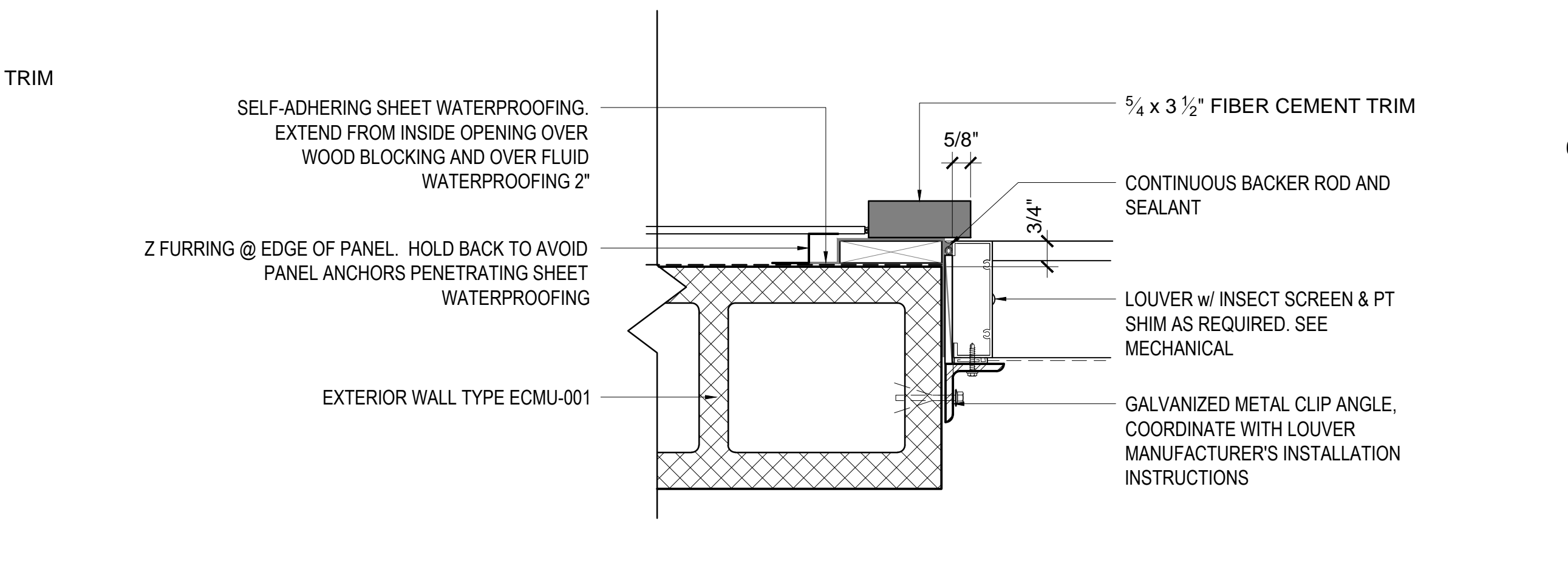
**4 LOUVER HEAD - CMU WALL**  
AS605 3" = 1'-0"



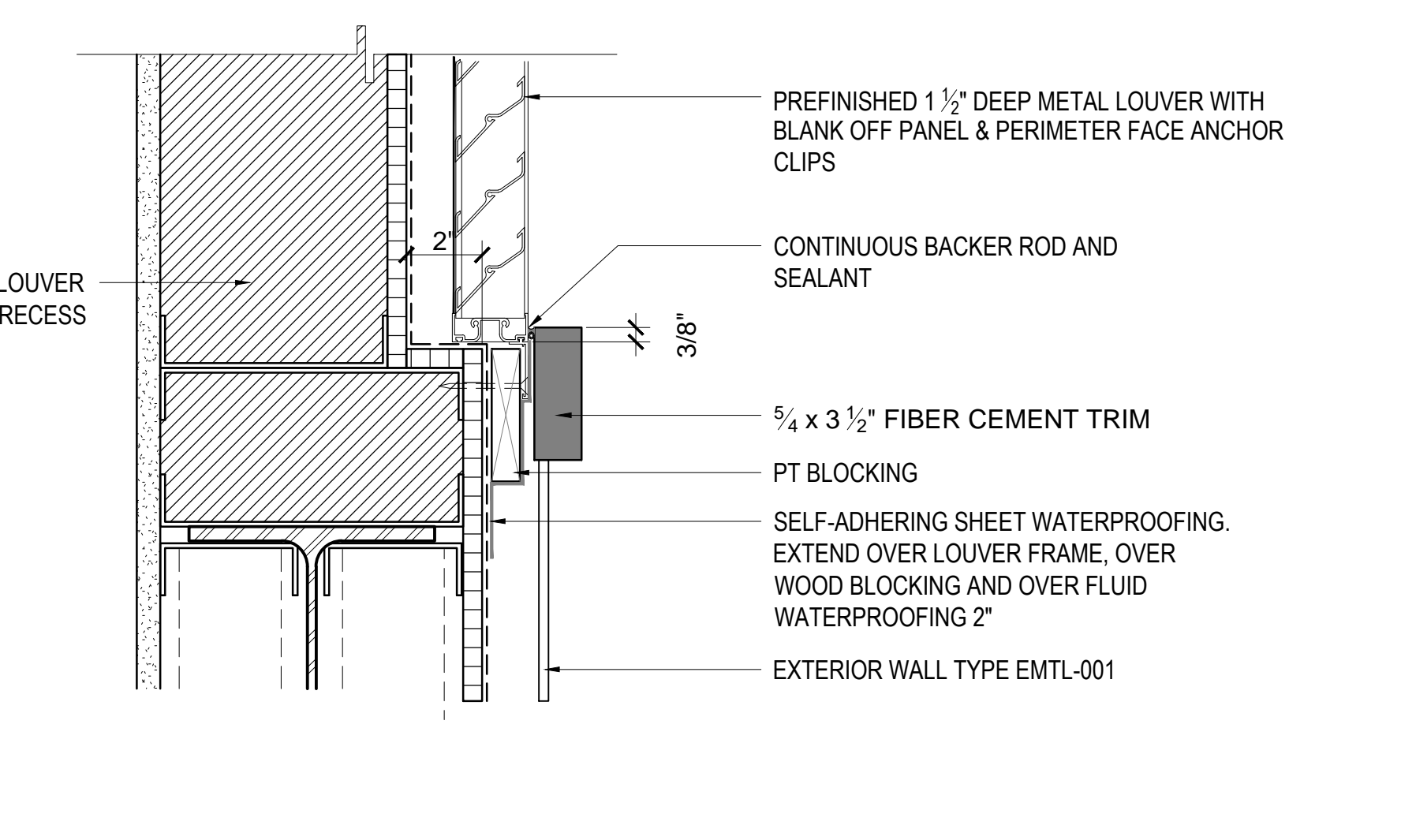
**7 DECORATIVE LOUVER HEAD (JAMB SIM.)**  
AS605 3" = 1'-0"



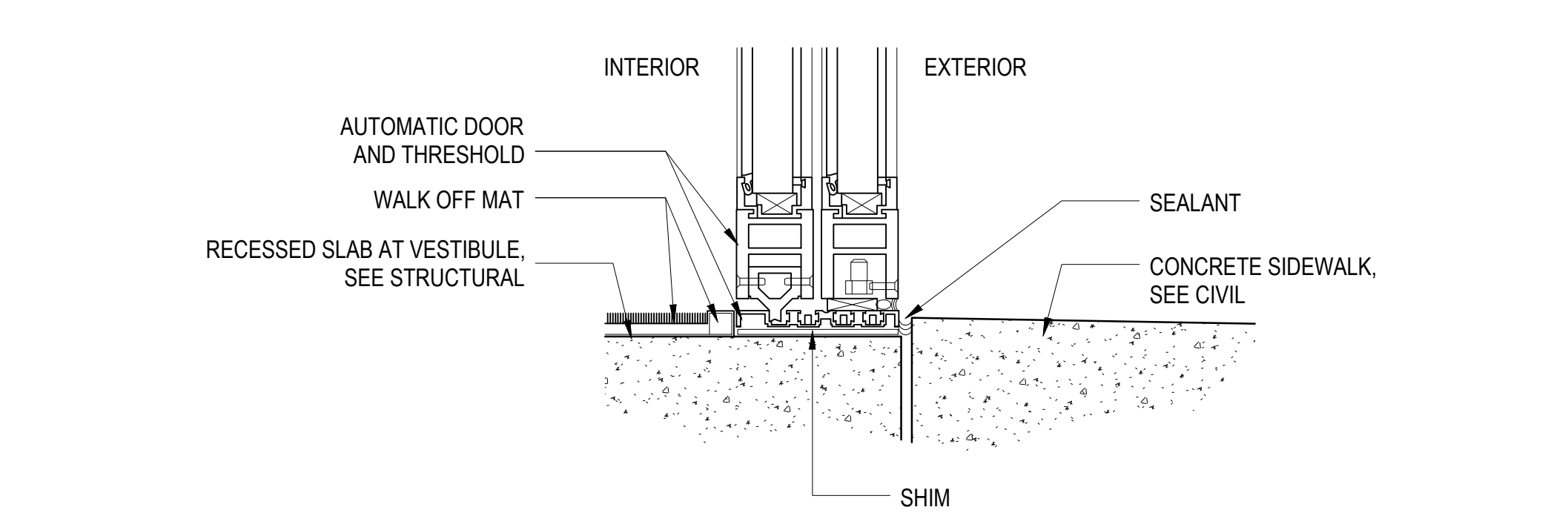
**2 EXT. AUTOMATIC SLIDING DOOR JAMB DETAIL**  
AS605 3" = 1'-0"



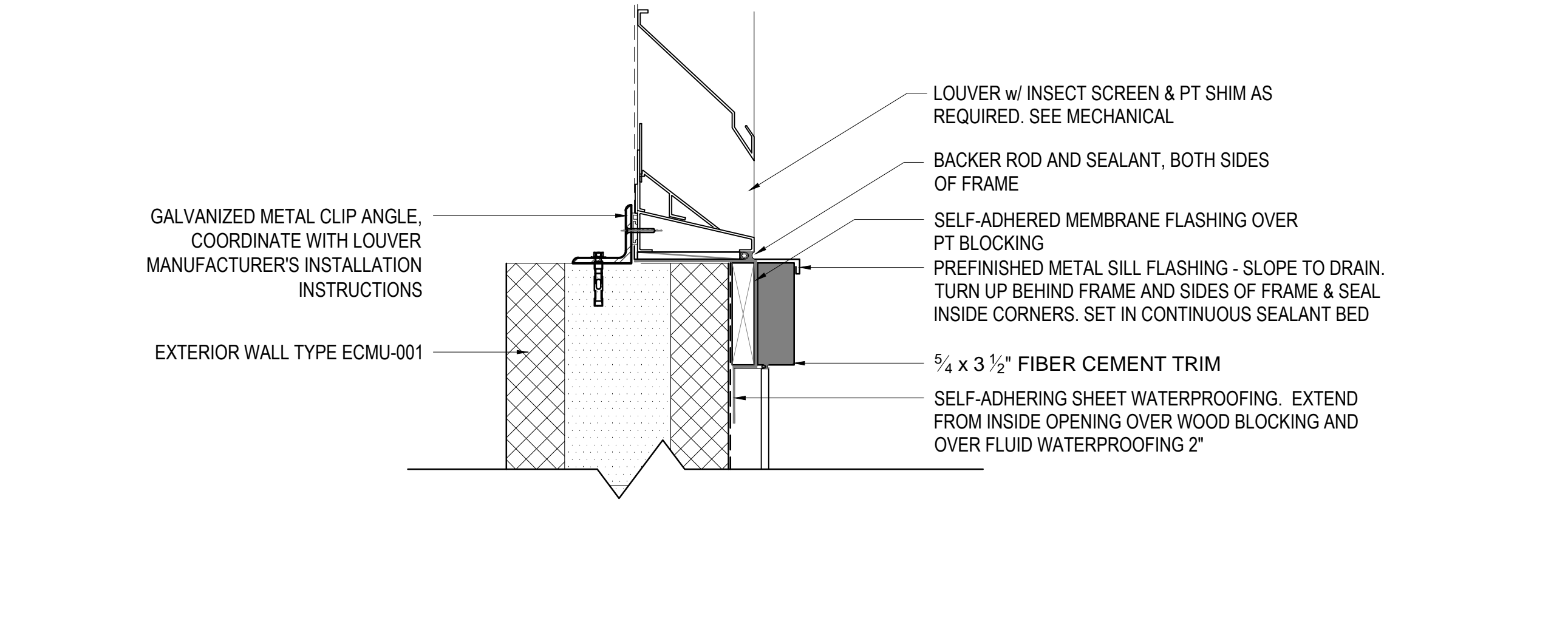
**5 LOUVER JAMB - CMU WALL**  
AS605 3" = 1'-0"



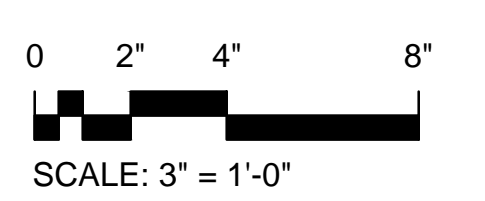
**8 DECORATIVE LOUVER SILL**  
AS605 3" = 1'-0"



**3 EXT. AUTOMATIC SLIDING DOOR SILL DETAIL**  
AS605 3" = 1'-0"



**6 LOUVER SILL - CMU WALL**  
AS605 3" = 1'-0"



5/16/2019 9:41:12 AM  
 one inch = one foot  
 one half inch = one foot  
 three quarters inch = one foot  
 one quarter inch = one foot  
 three eighths inch = one foot  
 one eighth inch = one foot  
 one quarter inch = one foot  
 one eighth inch = one foot  
 one quarter inch = one foot  
 one eighth inch = one foot  
 one quarter inch = one foot  
 one eighth inch = one foot

<b>CONSULTANTS:</b>	
CIVIL: KENNETH HORNE & ASSOCIATES 7201 NORTH 9TH AVENUE, STE. 6 PENSACOLA, FLORIDA 32504 PH: (850) 471-9005 FX: (850) 471-0993	COMM/DS: SCHMIDT CONSULTING GROUP, INC. 40 S. PALAFOX PLACE, STE. 300 PENSACOLA, FLORIDA 32502 PH: (850) 438-0050 FX: (850) 432-8631
LANDSCAPE ARCHITECT: CSA GROUP, INC. 6300 PICCADILLY SQUARE DRIVE MOBILE, ALABAMA 36609 PH: (251) 344-4023 FX: (251) 344-4052	SURVEYORS: KCI TECHNOLOGIES, INC. 10401 HIGHLAND MANOR DRIVE, SUITE 120 TAMPA, FLORIDA 33610 PH: (813) 740-2300

**ARCHITECT/ENGINEERS:**

**BES DESIGN/BUILD**

BES DESIGN/BUILD, LLC  
 766 Middle St, Fairhope, AL 36532  
 Phone: 251.990.5778 Fax: 251.990.3716

<b>Drawing Title</b>	AUTOMATIC DOOR AND LOUVER DETAILS
<b>Approved Project Director</b>	

<b>Project Title</b>			<b>Project Number</b>		
CONSTRUCT VA OUTPATIENT CLINIC, PANAMA CITY			520-326		
<b>Location</b>			<b>Building Number</b>		
PANAMA CITY, FLORIDA			-		
<b>Date</b>	<b>Checked</b>	<b>Drawn</b>	<b>Drawing Number</b>		
APRIL 2013			AS605		
			Dwg. 43 of 43		

**Office of Construction and Facilities Management**

Department of Veterans Affairs

FINAL SUBMISSION / FULLY SPRINKLERED