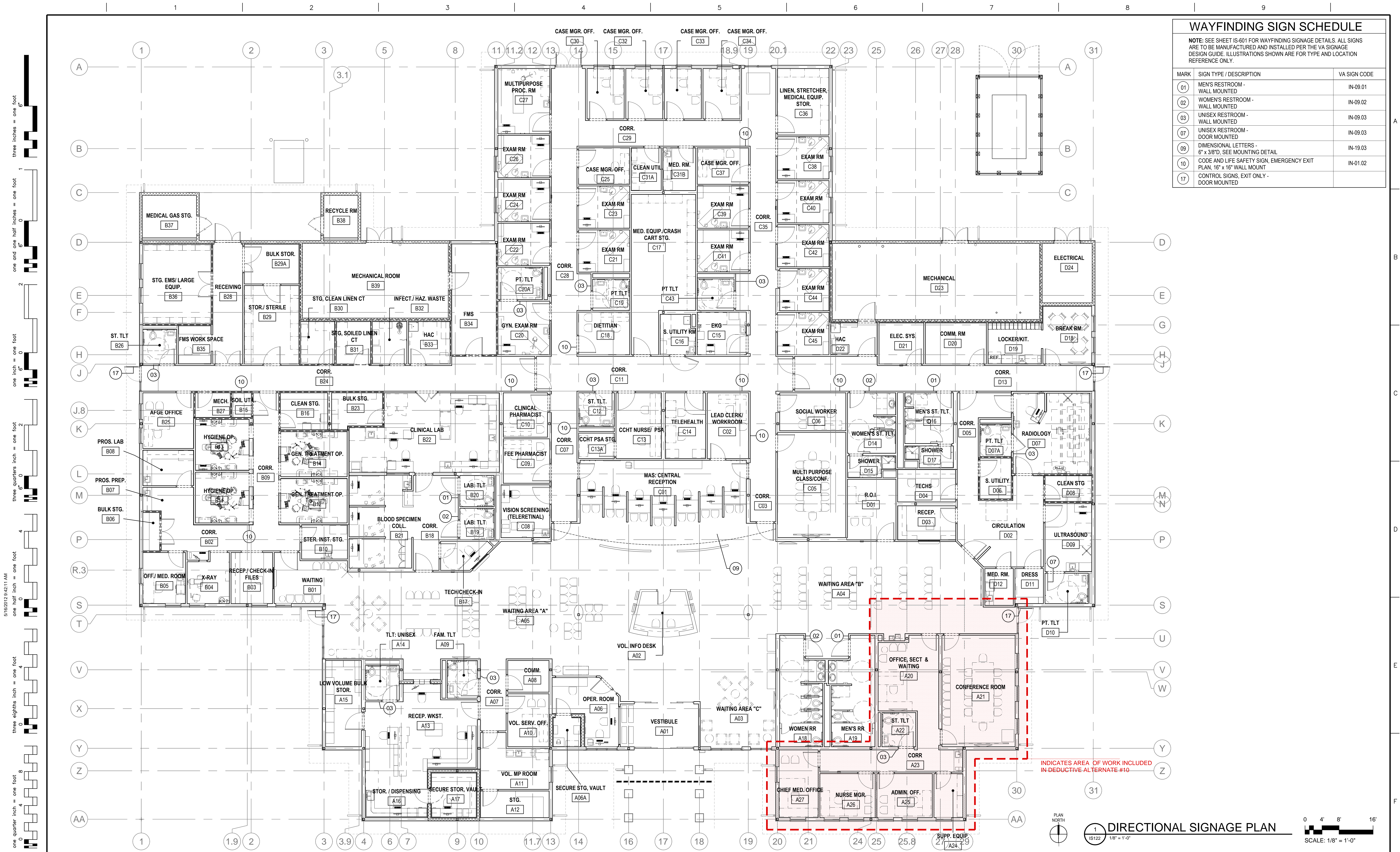


WAYFINDING SIGN SCHEDULE

NOTE: SEE SHEET IS-601 FOR WAYFINDING SIGNAGE DETAILS. ALL SIGNS ARE TO BE MANUFACTURED AND INSTALLED PER THE VA SIGNAGE DESIGN GUIDE. ILLUSTRATIONS SHOWN ARE FOR TYPE AND LOCATION REFERENCE ONLY.

MARK	SIGN TYPE / DESCRIPTION	VA SIGN CODE
01	MEN'S RESTROOM - WALL MOUNTED	IN-09.01
02	WOMEN'S RESTROOM - WALL MOUNTED	IN-09.02
03	UNISEX RESTROOM - WALL MOUNTED	IN-09.03
07	UNISEX RESTROOM - DOOR MOUNTED	IN-09.03
09	DIMENSIONAL LETTERS - 6" x 3/8"D. SEE MOUNTING DETAIL	IN-19.03
10	CODE AND LIFE SAFETY SIGN, EMERGENCY EXIT PLAN, 16" x 16" WALL MOUNT	IN-01.02
17	CONTROL SIGNS, EXIT ONLY - DOOR MOUNTED	



1 DIRECTIONAL SIGNAGE PLAN
IS122 1/8" = 1'-0"

INDICATES AREA OF WORK INCLUDED IN DEDUCTIVE ALTERNATE #10

CONSULTANTS:

CIVIL:
KENNETH HORNE & ASSOCIATES
7201 NORTH 9TH AVENUE, STE. 6
PENSACOLA, FLORIDA 32504
PH: (850) 471-9005
FX: (850) 471-0093

COMM/BS:
SCHMIDT CONSULTING GROUP, INC.
40 S. PALAFOX PLACE, STE. 300
PENSACOLA, FLORIDA 32502
PH: (850) 438-0050
FX: (850) 432-8631

LANDSCAPE ARCHITECT:
CSA GROUP, INC.
6300 PICCADILLY SQUARE DRIVE
MOBILE, ALABAMA 36609
PH: (251) 344-4023
FX: (251) 344-4052

SURVEYORS:
KCI TECHNOLOGIES, INC.
10401 HIGHLAND MANOR DRIVE, SUITE 120
TAMPA, FLORIDA 33610
PH: (813) 740-2300

ARCHITECT/ENGINEERS:



BES DESIGN/BUILD, LLC
766 Middle St, Fairhope, AL 36532
Phone: 251.990.5778 Fax: 251.990.3716

Drawing Title

DIRECTIONAL SIGNAGE PLAN

Approved Project Director

Project Title
CONSTRUCT VA OUTPATIENT CLINIC, PANAMA CITY

Location
PANAMA CITY, FLORIDA

Date
APRIL 2013

Project Number
520-326

Drawing Number
IS122

Dwg. 3 of 6

Office of
Construction
and Facilities
Management



D:\AC2010\Projects\13271-01_BES_JOPC_walls.rvt 5/16/2013 9:42:11 AM