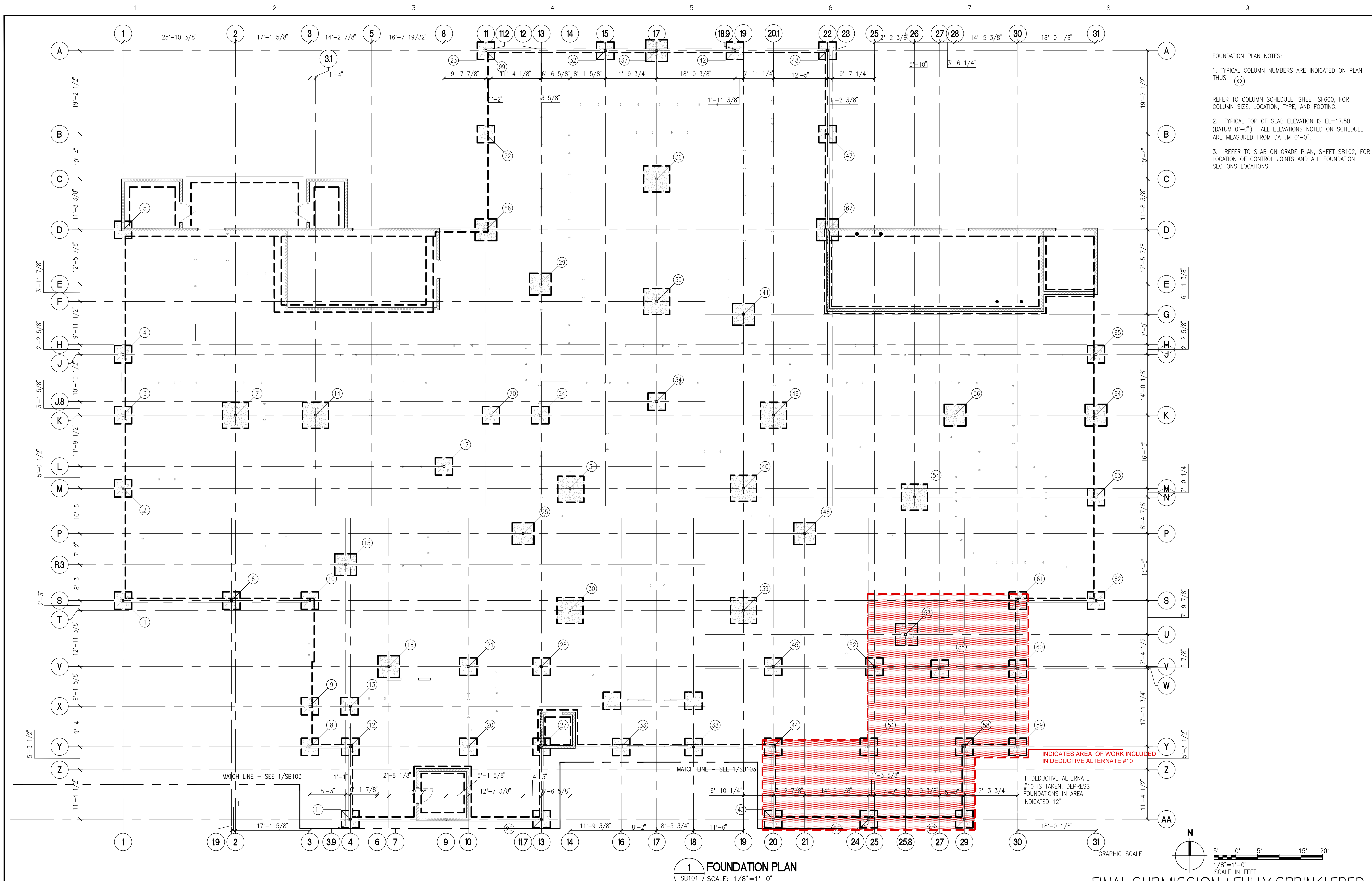


one eighth inch = one foot  
one quarter inch = one foot  
three eighths inch = one foot  
one half inch = one foot  
three quarters inch = one foot  
one inch = one foot  
one and one half inches = one foot  
two inches = one foot  
three inches = one foot  
four inches = one foot  
five inches = one foot  
six inches = one foot  
seven inches = one foot  
eight inches = one foot  
nine inches = one foot  
ten inches = one foot  
eleven inches = one foot  
twelve inches = one foot  
thirteen inches = one foot  
fourteen inches = one foot  
fifteen inches = one foot  
sixteen inches = one foot  
seventeen inches = one foot  
eighteen inches = one foot  
nineteen inches = one foot  
twenty inches = one foot  
twenty one inches = one foot  
twenty two inches = one foot  
twenty three inches = one foot  
twenty four inches = one foot  
twenty five inches = one foot  
twenty six inches = one foot  
twenty seven inches = one foot  
twenty eight inches = one foot  
twenty nine inches = one foot  
thirty inches = one foot



- FOUNDATION PLAN NOTES:
1. TYPICAL COLUMN NUMBERS ARE INDICATED ON PLAN THUS: (XX)
  2. TYPICAL TOP OF SLAB ELEVATION IS EL=17.50' (DATUM 0'-0"). ALL ELEVATIONS NOTED ON SCHEDULE ARE MEASURED FROM DATUM 0'-0".
  3. REFER TO SLAB ON GRADE PLAN, SHEET SB102, FOR LOCATION OF CONTROL JOINTS AND ALL FOUNDATION SECTIONS' LOCATIONS.

1 FOUNDATION PLAN  
SCALE: 1/8" = 1'-0"

FINAL SUBMISSION / FULLY SPRINKLERED

<b>CONSULTANTS:</b>  CIVIL: KENNETH HORNE & ASSOCIATES 7201 NORTH 9TH AVENUE, STE. 6 PENSACOLA, FLORIDA 32504 PH: (850) 471-9005 FX: (850) 471-0093  LANDSCAPE ARCHITECT: CSA GROUP, INC. 6300 PICCADILLY SQUARE DRIVE MOBILE, ALABAMA 36609 PH: (251) 344-4023 FX: (251) 344-4052		<b>ARCHITECT/ENGINEERS:</b>  BES DESIGN/BUILD, LLC 766 Middle St, Fairhope, AL 36532 Phone: 251.990.5778 Fax: 251.990.3716		<b>Drawing Title</b> FOUNDATION PLAN  <b>Approved Project Director</b>		<b>Project Title</b> CONSTRUCT VA OUTPATIENT CLINIC, PANAMA CITY  <b>Location</b> PANAMA CITY, FLORIDA  <b>Date</b> APRIL 2013		<b>Project Number</b> 520-326  <b>Building Number</b> -  <b>Drawing Number</b> SB101 Dwg 2 of 17		<b>Office of Construction and Facilities Management</b>  Department of Veterans Affairs	
<b>Revisions:</b>		<b>Date</b>		<b>Checked</b> NB		<b>Drawn</b> NB/KM					