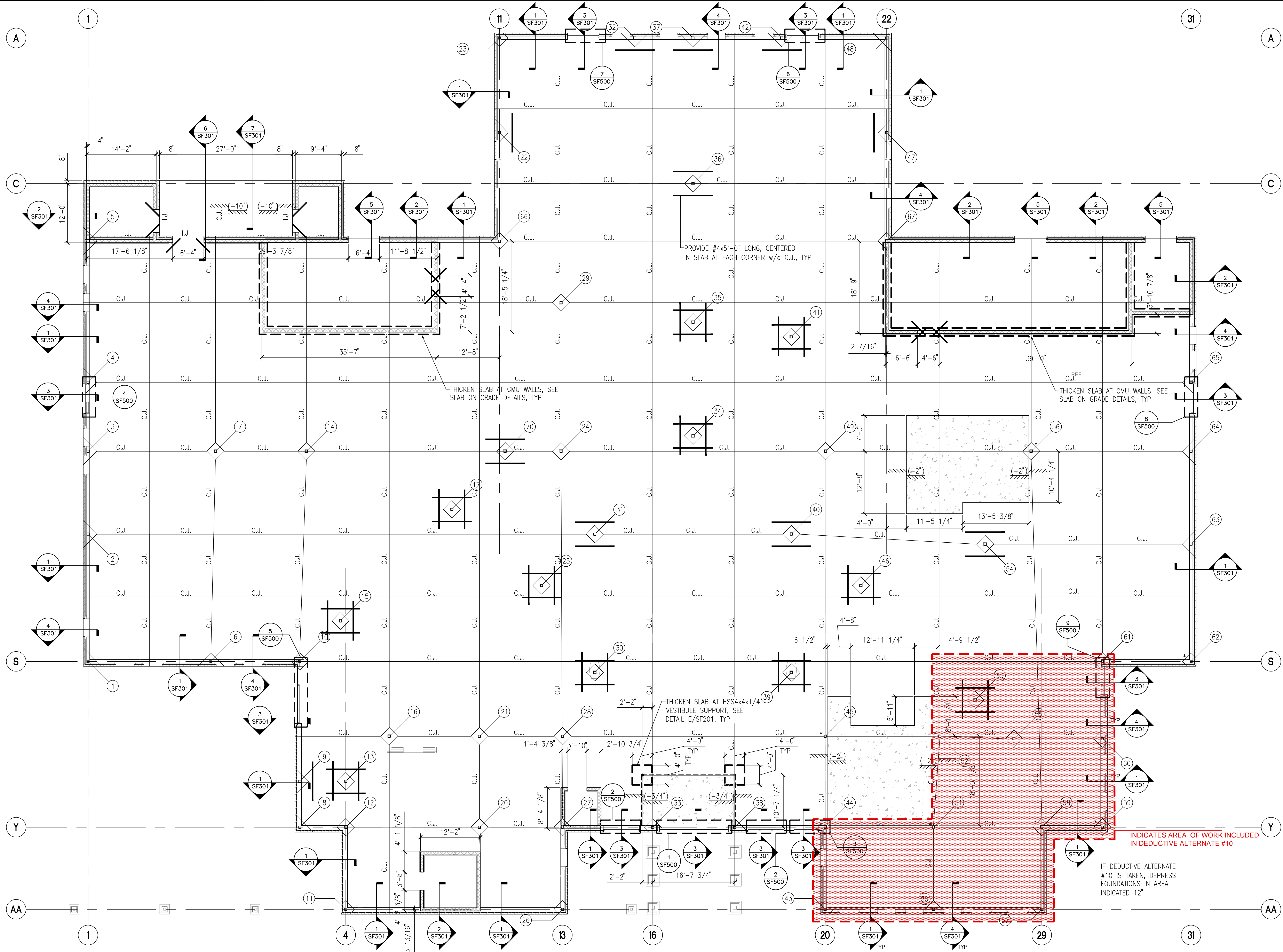
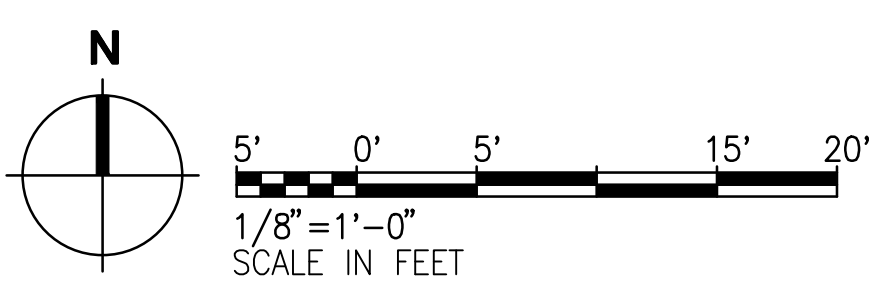


three inches = one foot
one and one half inches = one foot
one inch = one foot
three quarters inch = one foot
one half inch = one foot
three eighths inch = one foot
one quarter inch = one foot
one eighth inch = one foot

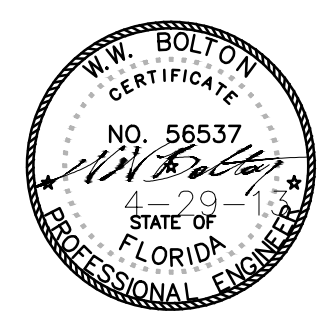




- SLAB ON GRADE PLAN NOTES:
1. TYPICAL SLAB ON GRADE SHALL CONSIST OF 4" THICK NORMAL WEIGHT CONCRETE, PLACED OVER 10 MIL VAPOR BARRIER AND SOIL PREPARED PER GEOTECHNICAL REPORT BY KCI TECHNOLOGIES, INC., DATED 08/2011. SLAB ON GRADE SHALL BE REINFORCED WITH 6"x6"-W2.9xW2.9 WELDED WIRE FABRIC (WWF). PROVIDE ADDITIONAL REINFORCING IN SLAB PER TYPICAL DETAILS.
 2. TYPICAL TOP OF SLAB ELEVATION IS EL=17.50' (DATUM 0'-0"). REFER TO ARCHITECTURAL, MECHANICAL, AND ELECTRICAL DRAWINGS FOR SLOPES AND DEPRESSIONS.
 3. CONTROL JOINTS ARE NOTED ON PLAN THUS: "C.J."
 4. TYPICAL COLUMN NUMBERS ARE INDICATED ON PLAN THUS: (XX)
 5. HATCHED REGIONS INDICATE AREAS OF RECESSED SLAB. REFER TO TYPICAL SLAB ON GRADE DETAILS FOR REINFORCING. LOCATIONS CORRESPOND TO ROOMS SHOWN ON ARCHITECTURAL DRAWINGS.
 6. * NEXT TO A COLUMN INDICATES BASE TO BE WRAPPED WITH BUILDING PAPER. REFER TO BASE DETAIL FOR MORE INFORMATION.

1 SLAB ON GRADE PLAN
SB101 SCALE: 1/8" = 1'-0"



FINAL SUBMISSION / FULLY SPRINKLERED

CONSULTANTS: CIVIL: KENNETH HORNE & ASSOCIATES 7201 NORTH 9TH AVENUE, STE. 300 PENSACOLA, FLORIDA 32504 PH: (850) 471-9005 FX: (850) 471-0093 LANDSCAPE ARCHITECT: CSA GROUP, INC. 6300 PICCADILLY SQUARE DRIVE MOBILE, ALABAMA 36609 PH: (251) 344-4023 FX: (251) 344-4052		ARCHITECT/ENGINEERS: COMM/DS: SCHMIDT CONSULTING GROUP, INC. 40 S. PALAFOX PLACE, STE. 300 PENSACOLA, FLORIDA 32302 PH: (850) 438-0050 FX: (850) 432-8631 SURVEYORS: KCI TECHNOLOGIES, INC. 10401 HIGHLAND MANOR DRIVE, SUITE 120 TAMPA, FLORIDA 33610 PH: (813) 740-2300		  BES DESIGN/BUILD, LLC 766 Middle St, Fairhope, AL 36532 Phone: 251.990.5778 Fax: 251.990.3716		Drawing Title SLAB ON GRADE PLAN Approved Project Director		Project Title CONSTRUCT VA OUTPATIENT CLINIC, PANAMA CITY Location PANAMA CITY, FLORIDA Date APRIL 2013		Project Number 520-326 Building Number - Drawing Number SB102 Dwg 3 of 17		Office of Construction and Facilities Management 	
--	--	---	--	---	--	--	--	--	--	---	--	---	--