

A

B

C

D

E

F

A

B

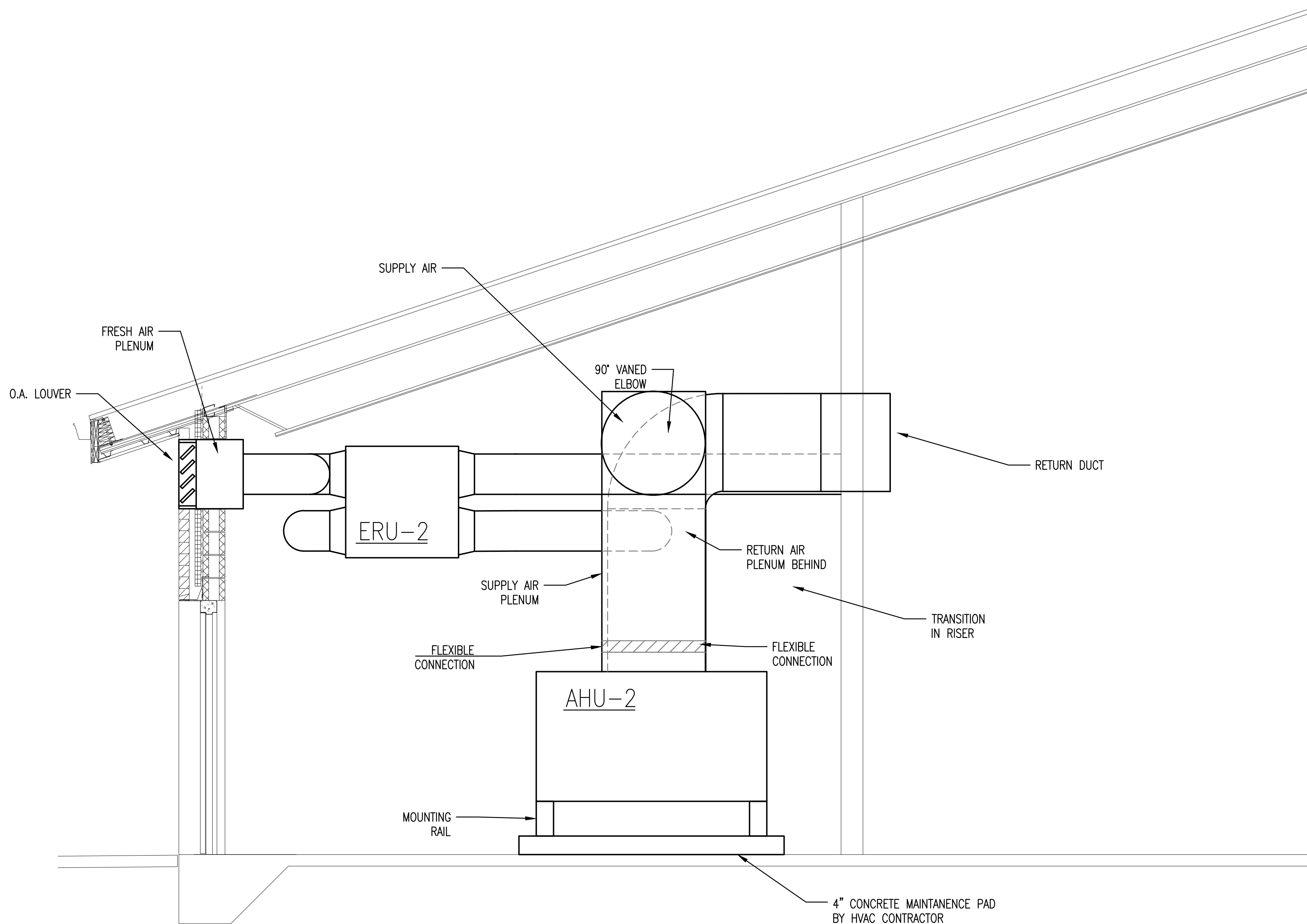
C

D

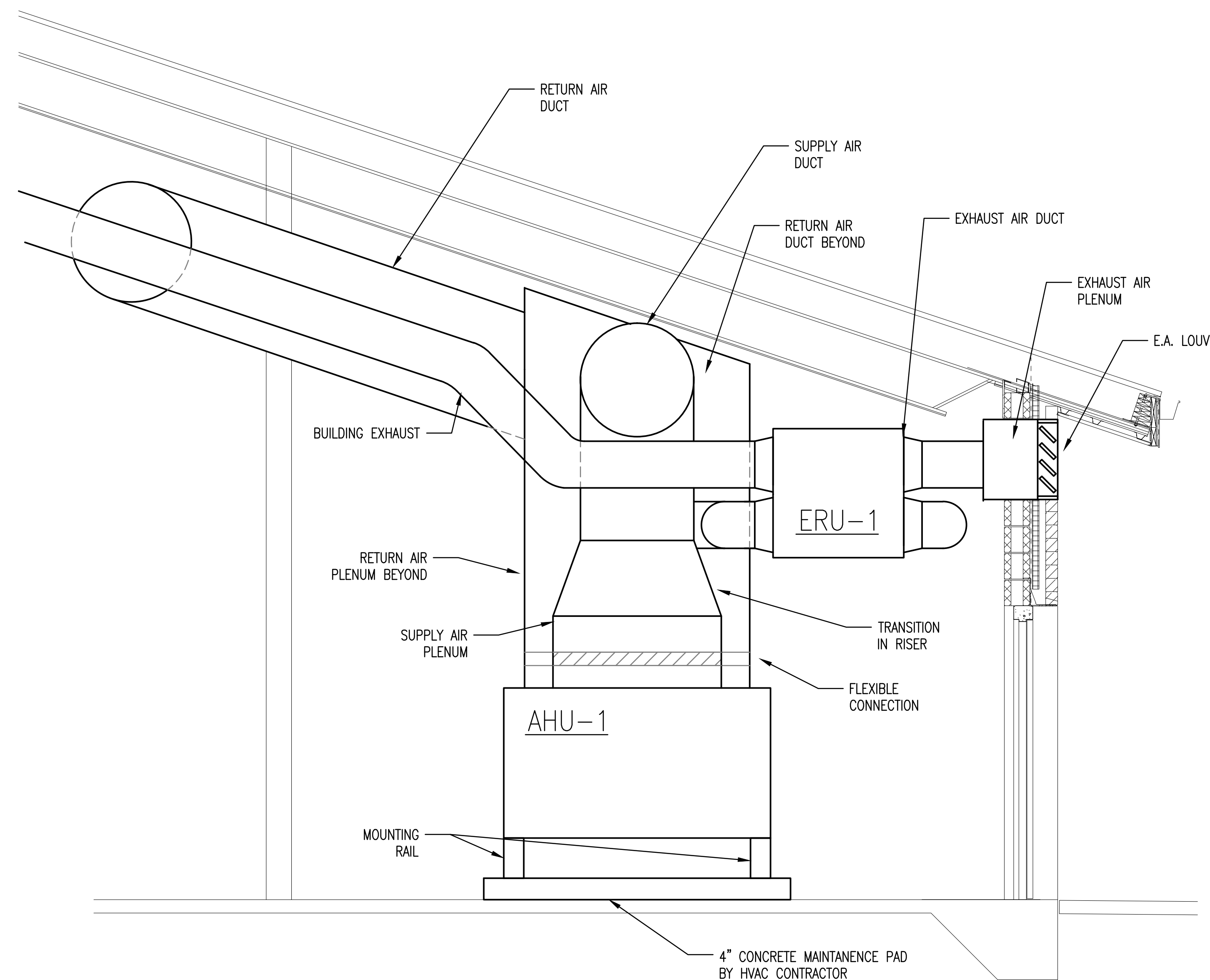
E

F

three inches = one foot
one and one half inches = one foot
one inch = one foot
three quarters inch = one foot
one half inch = one foot
three eighths inch = one foot
one quarter inch = one foot
one eighth inch = one foot



1
MH002
MECHANICAL PLAN - MECHANICAL ROOM SECTION
SCALE: 1/2" = 1'-0"



2
MH002
MECHANICAL PLAN - MECHANICAL ROOM SECTION
SCALE: 1/2" = 1'-0"

FINAL SUBMISSION / FULLY SPRINKLERED

Revisions:		CONSULTANTS:		ARCHITECT/ENGINEERS:		Drawing Title		Project Title		Project Number		Office of Construction and Facilities Management 	
		CIVIL: KENNETH HORNE & ASSOCIATES 7201 NORTH 9TH AVENUE, STE. 6 PENSACOLA, FLORIDA 32504 PH: (850) 471-9005 FX: (850) 471-0093		COMM/DS: SCHMIDT CONSULTING GROUP, INC. 40 S. PALAFOX PLACE, STE. 300 PENSACOLA, FLORIDA 32502 PH: (850) 438-0050 FX: (850) 432-8631		MECHANICAL SECTIONS		CONSTRUCT VA OUTPATIENT CLINIC, PANAMA CITY		520-326			
		LANDSCAPE ARCHITECT: CSA GROUP, INC. 6300 PICCADILLY SQUARE DRIVE MOBILE, ALABAMA 36609 PH: (251) 344-4023 FX: (251) 344-4052		SURVEYORS: KCI TECHNOLOGIES, INC. 10401 HIGHLAND MANOR DRIVE, SUITE 120 TAMPA, FLORIDA 33610 PH: (813) 740-2300		Approved Project Director		Location PANAMA CITY, FLORIDA		Building Number -			
								Date APRIL 2013		Checked GL		Drawing Number MH003	
						BES DESIGN/BUILD 766 Middle St, Fairhope, AL 36532 Phone: 251.990.5778 Fax: 251.990.3716				Drawn TF		Dwg. 4 of 11	

1

2

3

4

5

6

7

8

9